

DORNE
DURNE
OFF-ROAD®



10K^{AND} 12K LBS WINCHES

OWNER'S MANUAL & SAFETY INSTRUCTIONS

SAVE THIS MANUAL

Save this owner's manual for safety warnings and precautions, assembly, operation, inspection, maintenance and cleaning procedures.

When unpacking, ensure the product is intact and undamaged. If any parts are missing or broken, contact your retailer as soon as possible.

Read this manual before using this product. Failure to do so can result in serious injury or death.

⚠ WARNING

INGESTION HAZARD: This product contains a button cell or coin battery.

DEATH or serious injury can occur if ingested.

A swallowed button cell or coin battery can cause **Internal Chemical Burns** in as little as **2 hours**.

KEEP new and used batteries **OUT OF REACH OF CHILDREN**.

Seek Immediate medical attention if a battery is suspected to be swallowed or inserted inside any part of the body.

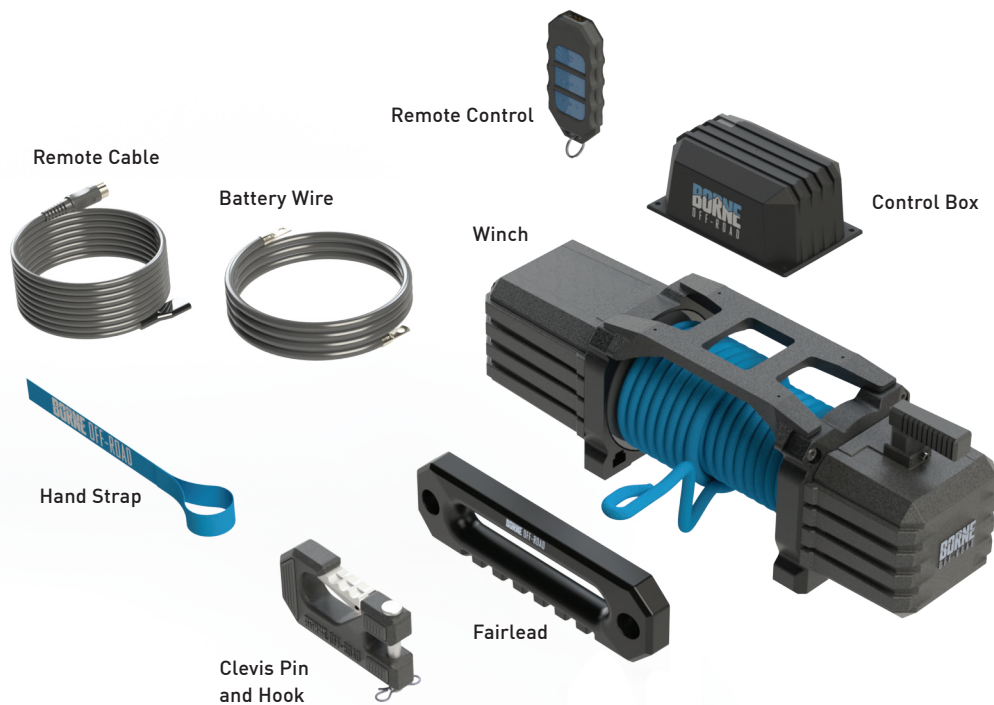


TABLE OF CONTENTS

- PG 02.** Parts Included
- PG 03.** Safety & Warnings
- PG 08.** About Your Winch
- PG 11.** Setup & Installation
- PG 14.** Operating Instructions

- PG 16.** Troubleshooting
- PG 16.** Maintenance
- PG 17.** Warranty
- PG 18.** Recommended Gear

PARTS INCLUDED



MULTI-FUNCTIONAL REMOTE CONTROL



POWER ON

- › Press and hold the power button for 3 seconds.
- › The controller is on when the LED indicator turns red.

POWER OFF

- › Hold down the power button until the red LED turns off.
- › Alternately, the remote control will turn off automatically if inactive for 2 minutes.

Battery Type: CR2450 | Wireless Range: 50'

SAFETY & WARNINGS

⚠ WARNING

Read the entirety of this manual before operating winch. Follow all instructions during operation. Failure to follow instructions may result in property damage, injury, and death. A winch can develop tremendous pulling forces. If a winch is used improperly, or in an unsafe manner, personal injury, death, and/or property damage can occur. Throughout this manual **CAUTION**, **WARNING**, and **DANGER** symbols are present. Pay particular attention to notes preceded by these symbols as they are written for your safety. User is responsible for the safe operation of this device.

GENERAL SAFETY PRECAUTIONS

- › Do not exceed rated capacity.
- › Do not use winch to lift vertically or as a hoist.
- › Do not use winch to pull or move people in any way.
- › Never cut, weld, or modify any part of winch or synthetic rope.
- › A minimum of five (5) wraps of synthetic rope around winch drum is necessary for pulling and holding rated load.

GENERAL SAFETY PRECAUTIONS CONTINUED

- ▶ Keep yourself and others at a safe distance when synthetic rope is under tension.
- ▶ Synthetic rope may break before motor stalls. For heavy loads or near rated capacity, use a pulley block/snatch block to reduce load on synthetic rope.
- ▶ When under load, never step over or go near synthetic rope.
- ▶ Do not move vehicle to pull a load or tow on synthetic rope.
- ▶ Avoid “shock loads” by using remote control intermittently to take up slack in synthetic rope. “Shock loads” can exceed rated capacity for synthetic rope and winch drum.
- ▶ Apply blocks to wheels of vehicle when on an incline.

GENERAL TIPS FOR SAFE OPERATION

- ▶ Winch is at rated capacity when spooling first synthetic rope layer onto winch drum. Overloading can damage components.
- ▶ For loads over 70% of rated line pull, it is recommended to use a pulley block/snatch block to double rope line. When doubling line, number of layers on winch drum is reduced and load on synthetic rope is reduced by as much as 50%. Attach to frame or other load bearing component when doubling line back to vehicle.
- ▶ To minimize battery drain and maximize power and speed of winch, keep vehicle engine running when operating winch. Battery may be drained if winch is used for a considerable amount of time with engine off.
- ▶ Know all the features of your winch before actual use. Become familiar with rigging techniques, sounds made under various loads, the way synthetic rope spools onto winch drum, etc., by performing several test runs.
- ▶ Inspect all components, hardware, and electrical connections before each use. If synthetic rope is frayed or damaged, replace immediately. Use only Borne Off-Road replacement rope. Replace any component that appears to be damaged, worn, or operating abnormally.
- ▶ Never connect synthetic rope back onto itself. Always use a snatch block, tree strap, or sling of suitable strength.
- ▶ Use only attachments and/or adapters supplied by Borne Off-Road.
- ▶ Test run winch in both directions before winching.

⚠ CAUTION

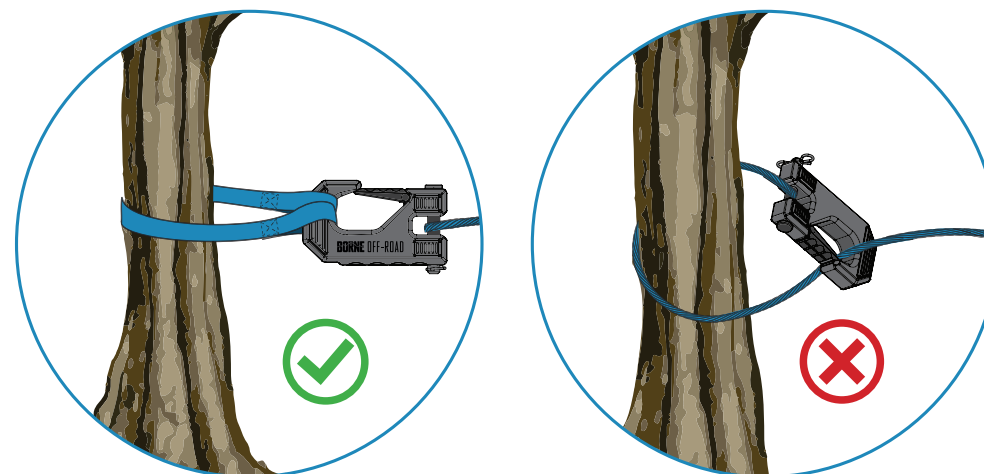
- ▶ If motor stalls, stop winching immediately. Electric winches are designed for intermittent use.
- ▶ Do not use in constant duty applications. Keep duration of winching pulls as short as possible.
- ▶ Do not use for more than one (1) minute when at or near rated load.
- ▶ If motor becomes hot to touch, stop winching immediately. Allow motor to cool before resuming.
- ▶ Never disengage clutch when a load is on winch.

⚠ WARNING

Leave at least five (5) full turns of synthetic rope on the drum.

⚠ WARNING

Do not wrap the synthetic rope around the object and hook onto the synthetic rope itself. This can damage the object being pulled, or resulting in kinking or fraying of the synthetic rope.



CAUTION

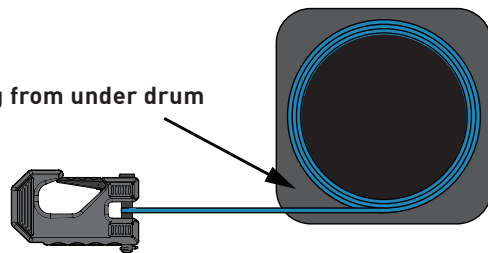
Use hand strap when handling clevis hook. Use gloves to protect hands when handling synthetic rope. Never let synthetic rope slide through bare hands.



WARNING

When re-spooling, ensure that synthetic rope spools in position with synthetic rope entering winch drum from bottom, not top.

Rope exiting from under drum

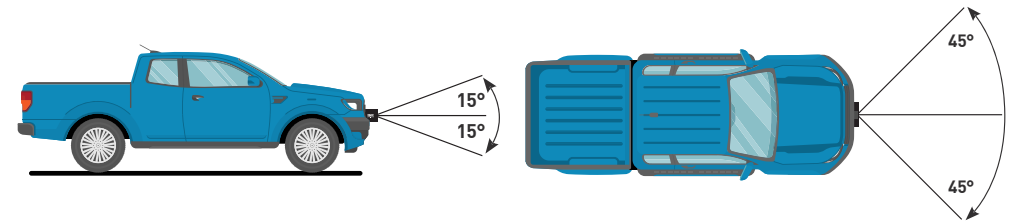


SIDE CUTAWAY VIEW OF WINCH

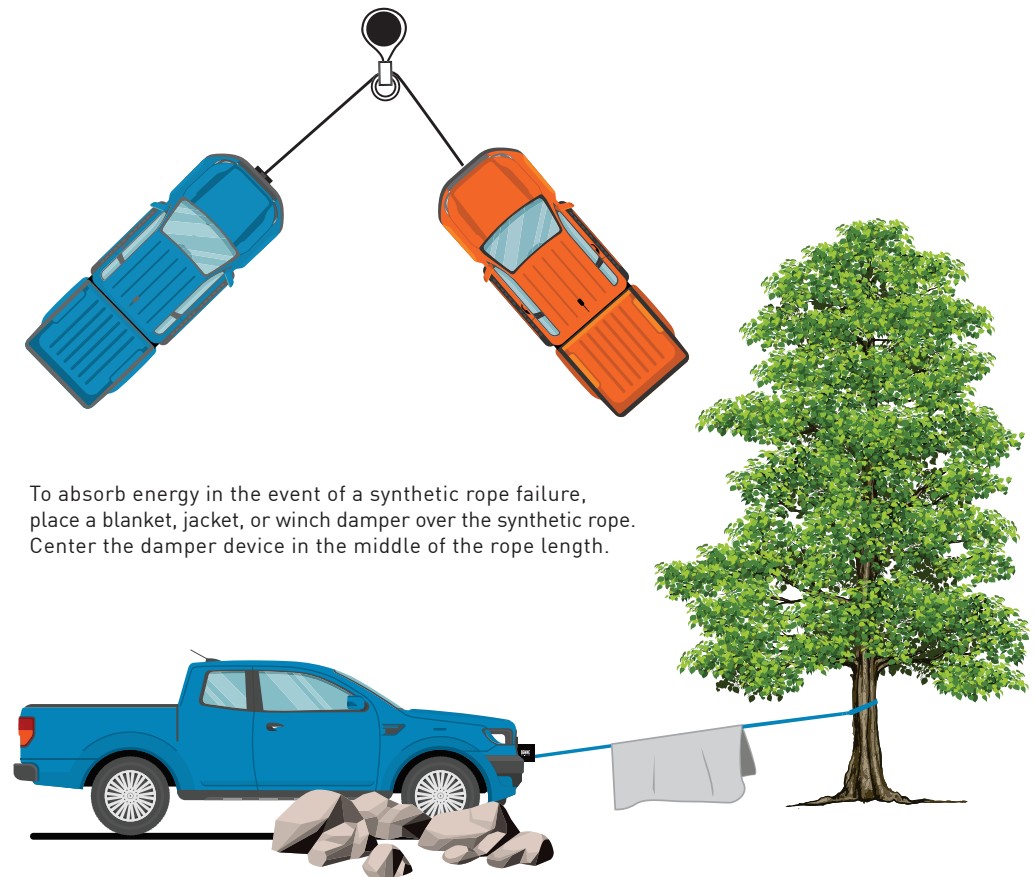
- ▶ To spool correctly, keep a load (recommended load 600 lbs.) on synthetic rope while pushing remote button to draw in synthetic rope. Walk towards winch while not allowing synthetic rope to slide through hands. Do not let hands get within 12" of winch while re-spooling.
- ▶ When only a few feet of rope remains be sure to hold the hand strap and not the hook.
- ▶ Repeat procedure until hook meets fairlead.
- ▶ Keep hands clear of fairlead and winch drum while winch is under power.

CAUTION

Do not operate the winch at extreme angles. Do not exceed the angles shown in the figure below. For a hawse fairlead, the angle should be as close to straight as possible.



If the object to be pulled must be pulled at an angle in relation to the winch, use a pulley (sold separately) and an anchor point directly in front of the winch, as shown in figure below to keep the Synthetic Rope pull straight.



To absorb energy in the event of a synthetic rope failure, place a blanket, jacket, or winch damper over the synthetic rope. Center the damper device in the middle of the rope length.

ABOUT YOUR WINCH

GETTING TO KNOW YOUR WINCH

A winch is a powerful piece of machinery. For safe and confident operation, it is important to understand basic winch operations and specifications. See below for details on winch components and usage. Practice using winch before an actual situation occurs.

Motor: Motor is powered by a 12-volt battery. Motor provides power to mechanical gear mechanism which turns winch drum and winds synthetic rope.

Winch Drum: Cylinder on which synthetic rope is stored. Winch drum feeds or winds synthetic rope depending on winch switch direction.

Synthetic Rope: Designed specifically for the winch load capacity and is looped at end to accept clevis hook pin. Synthetic rope feeds onto winch drum, through fairlead.

Fairlead: When operating winch at an angle, Fairlead guides synthetic rope onto winch drum and minimizes damage/abrasion from winch mount or bumper.

Mechanical Gear System: Converts motor power into extreme pulling forces.

Braking System: Braking action is automatically applied to winch drum when motor is stopped and there is load on synthetic rope.

Control System: Winch can be controlled by using remote control in either wired or wireless configuration.

Free Spooling Clutch: Allows user to manually disengage winch drum from mechanical gear system "FREE-SPOOL". Engaging clutch locks winch into mechanical gear system "ENGAGED".

Control Box: Power from vehicle battery flows through a weather-sealed switch before being directed to motor.

Remote: Multi-functional remote control. Both wired and wireless control. Allows user to operate winch from up to 50' away.

The best way to get acquainted with how your winch operates is to make a few test runs before you actually need to use it. Plan your test in advance. Don't just rely on sight; listen to the noises the winch makes during operation. Learn to recognize the sound of a light and steady pull, a heavy pull, and sounds caused by load jerking or shifting.

ELECTRICAL SYSTEM NOTES

1. Your vehicle battery must be kept in good condition.
2. Be sure battery cables are not drawn taught across any surfaces, which could possibly damage them, or your vehicle.
3. Corrosion on electrical connections will reduce performance and/or may cause a short.
4. Clean all connections, especially in remote control switch and receptacle.

10,000 LBS WINCH

Rated Single Line Pull	10000 lb. (4536kg.)	Battery Cables	Min. 2 Gauge, 5.9ft (1.8m)
Application	Vehicle Recovery/ For Trucks and SUV's	Mounting Bolt Pattern	10" x 4.5" (254mm X 114.3mm)
Motor	12VDC 4.6 HP Series Wound	Mounting Hardware	Winch: (4) Grade 12.9 M10-1.5 X 30mm Bolts (4) Grade 10 M10 -1.5 Square Nuts (4) Lock Washers (4) Flat Washers Fairlead: (2) Grade 12.9 M12-1.75 X 30mm Bolts (2) Grade 10 M12 X 1.75 Nuts (2) Lock Washers (2) Flat Washers Control Box: (4) Grade 8.8 M5-0.8 X 10mm Bolts
Power IN & Power OUT	Yes		Overall Dimensions (L x D x H)
Controller	Wired, 12 ft (3.7m) Long Wireless, 50' Range	Weight	60.6 lb. (27.5 kg.)
Gear train	3-Stage Planetary	IP Rating	IP 68: Winch and Controls (resistant to powerful water jets, except remote control switch and control box) IP 67: Remote Controller
Gear Ratio	265:1		
Freespool	Sliding Ring Gear		
Brake	Auto. Load Holding		
Drum (Dia.XL)	2.5" X 8.8" (64mm X 224mm)		
Fairlead	Aluminum Fairlead		
Control	Remote Switch		
Sound Rating	85 dB		
Wire Rope Size	Ø0.375" X 85' (Ø9.5mm X 26m) Nominal strength=14,400 lb		
Battery	12VDC Minimum 650 CCA		

LAYER	RATED LINE PULL	ROPE CAPACITY
1	10000 lb. (4536kg.)	16.25' (5.0m)
2	7980 lb. (3620 kg.)	36.7' (11.2m)
3	6660 lb. (3021 kg.)	61.5' (18.8m)

FIRST LAYER OF ROPE PERFORMANCE			
	LINE PULL LB.(KG.)	LINE SPEED FPM (MPM)	AMP DRAW (@ 12V)
1	0 (0)	28.2 (8.6)	74
	2500 (1136)	13.8 (4.2)	150
	5000 (2268)	9.2 (2.8)	204
	7500 (3400)	6.6 (2.0)	265
	10000 (4545)	5.6 (1.7)	350

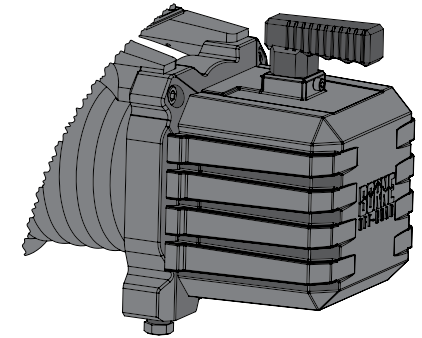
12,000LBS WINCH

Rated Single Line Pull	12000 lb. (5443kg.)	Battery Cables	Min. 2 Gauge, 5.9ft (1.8m)
Application	Vehicle Recovery/ For Trucks and SUV's	Mounting Bolt Pattern	10" x 4.5" (254mm X 114.3mm)
Motor	12VDC 5.6 HP Series Wound	Mounting Hardware	Winch: (4) Grade 12.9 M10-1.5 X 30mm Bolts (4) Grade 10 M10 -1.5 Square Nuts (4) Lock Washers (4) Flat Washers Fairlead: (2) Grade 12.9 M12-1.75 X 30mm Bolts (2) Grade 10M12 X 1.75 Nuts (2) Lock Washers (2) Flat Washers Control Box: (4) Grade 8.8 M5-0.8 X 10mm Bolts
Power IN & Power OUT	Yes		Overall Dimensions (L x D x H)
Controller	Wired, 12 ft (3.7m) Long Wireless, 50' Range	Weight	60.6 lb. (27.5 kg.)
Gear train	3-Stage Planetary	IP Rating	IP 68: Winch and controls (resistant to powerful water jets, except remote control switch and control box) IP 67: Remote controller
Gear Ratio	265:1		
Freespool	Sliding Ring Gear		
Brake	Auto. Load Holding		
Drum (Dia.XL)	2.5" X 8.8" (64mm X 224mm)		
Fairlead	Aluminum Fairlead		
Control	Remote Switch		
Sound Rating	85 dB		
Wire Rope Size	Ø0.375" X 85' (Ø9.5mm X 26m) Nominal strength=14,400 lb		
Battery	12VDC Minimum 650 CCA		

FREE-SPOOLING

To free-spool the rope off the winch:

1. Ensure there is no tension on the clutch.
2. Rotate clutch handle to "FREE-SPOOL" position.
3. Pull out cable as needed.
4. Rotate clutch handle back to "ENGAGED" position.



SETUP & INSTALLATION

WINCH ASSEMBLY AND MOUNTING

Winch is designed with a standard bolt pattern for its class. When installing, ensure that winch installs to a flat surface so motor, winch drum, and gear housing are properly aligned. Proper alignment allows for even distribution of full rated loads.

1. Install fairlead with supplied M12 hardware.
2. Secure winch with supplied M10 hardware.

CONTROL BOX TO WINCH MOUNTING

- ▶ Control box is designed to install directly to tie bars on winch using the supplied M5-0.8 X 10mm bolts. This is Borne Off-Road's preferred mounting method.
- ▶ User may install to an optional location, custom bracketry may be required.

⚠ CAUTION

Remove all jewelry and wear eye protection when making battery connections. Batteries contain flammable and explosive gases. Avoid leaning over battery.

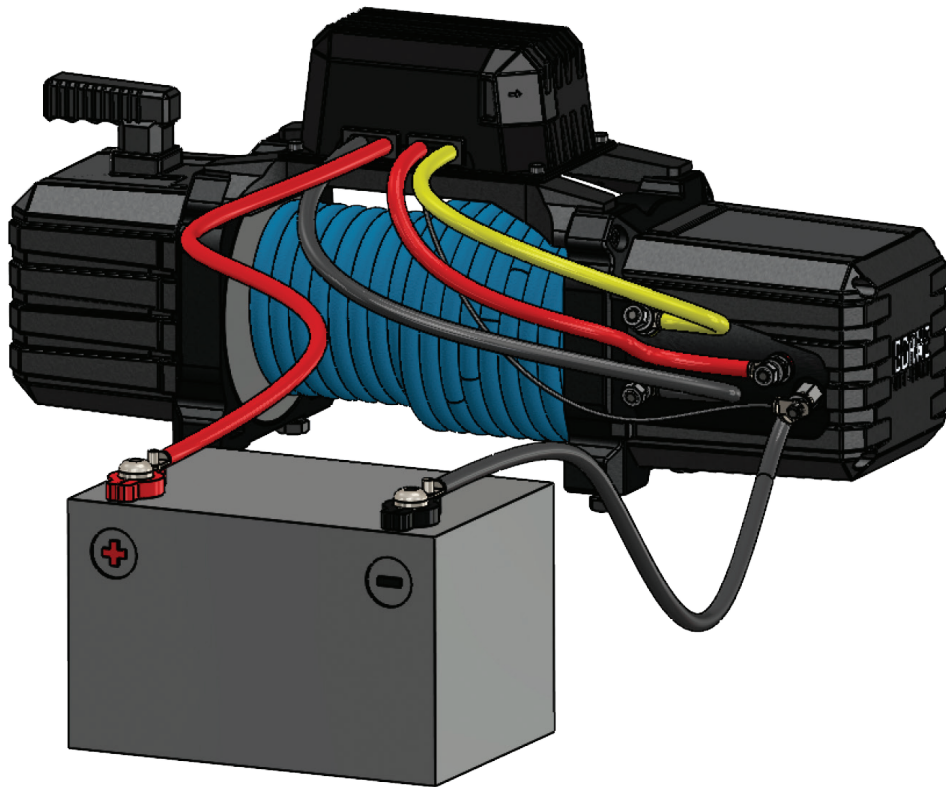
LAYER	RATED LINE PULL	ROPE CAPACITY
1	12000 lb. (5443 kg.)	16.25' (5.0m)
2	9530 lb. (4322 kg.)	36.7' (11.2m)
3	7920 lb. (3592 kg.)	61.5' (18.8m)

FIRST LAYER OF ROPE PERFORMANCE

	LINE PULL LB.(KG.)	LINE SPEED FPM (MPM)	AMP DRAW (@ 12V)
1	0 (0)	28.2 (8.6)	77
	3000 (1360)	11.5 (3.5)	160
	6000 (2721)	7.9 (2.4)	230
	9000 (4082)	6.9 (2.1)	290
	12000 (5443)	5.2 (1.6)	380

CONTROL BOX TO BATTERY

- ▶ Attach the red battery cable to the positive terminal on the battery.
 - ▶ Attach the black battery cable directly to the negative terminal of the battery.
- Black negative battery cable and black control box ground wire will share the same terminal post.**



STOP!

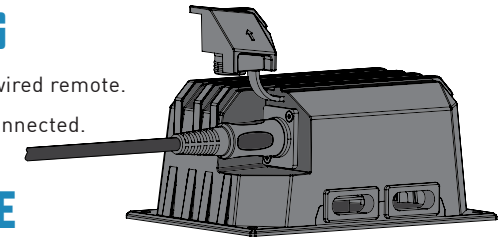
- ▶ Use two (2) wrenches when tightening terminal posts.
Only use hand tools and do not overtighten.
- ▶ Torque all wiring connections to a maximum 35 in/lbs.

CONTROL BOX TO WINCH WIRING

- ▶ Connect wires from control box to terminal posts on winch.
- ▶ Match colors and secure. Attach the red, black, and yellow cables to the terminals on the winch. The winch terminals are color-coded.

WIRED REMOTE CONNECTING

- ▶ Open protective boot on control box and connect wired remote.
- ▶ Close protective boot when wired remote is not connected.



INSTALLING SYNTHETIC ROPE

1. Unravel synthetic rope and locate the end featuring steel mounting bracket.
2. Ensure the synthetic rope is free of knots prior to attempting to install rope.
3. Disconnect negative terminal from battery (for safety, the unit should be powered down while attaching the rope)
4. Use the supplied mounting bolt to attach the metal bracket to the drum.
5. Reconnect the negative terminal to the battery, power on remote.
6. Set winch to "ENGAGED".
7. Be sure to use gloves for the remainder of these steps.
8. Using the winch power, pull the synthetic rope in to the drum.
9. Apply tension to the rope as it is being pulled to ensure tightness on the drum and layers of rope.
10. If the rope does not disperse evenly or binds up, set the winch to "FREE-SPOOL" and pull out the length where the issue occurred and try again. You may need to guide the rope slightly so you have an even row of rope across the entire drum.
11. Pull the entire rope into the drum minus the last 24" (to ensure you have room to push through the fairlead".

INSTALLING HOOK & CHECK OPERATION

1. Assemble clevis hook to synthetic rope.
 - A. Remove pin from clevis hook and connect clevis hook to synthetic rope.
 - B. Reinstall pin to clevis hook.

INSTALLING HOOK & CHECK OPERATION CONTINUED

2. Install hand strap to clevis hook.
3. Check winch drum for proper rotation:
 - A. Set free spooling clutch to "FREE-SPOOL" and pull out some synthetic rope.
 - B. Set free spooling clutch to "ENGAGED" and press "OUT" button on remote. If properly installed, winch drum should be turning and releasing synthetic rope.

The attachment of the motor cables determines the direction of the controller's button. After the unit is mounted and powered, check the direction of the power in and power out on the controller button. If you wish to change the direction on the controller, disconnect the battery cables from the battery, switch the motor cable connections on the motor assembly, then reconnect the battery cables. Disconnect the controller when not in use.

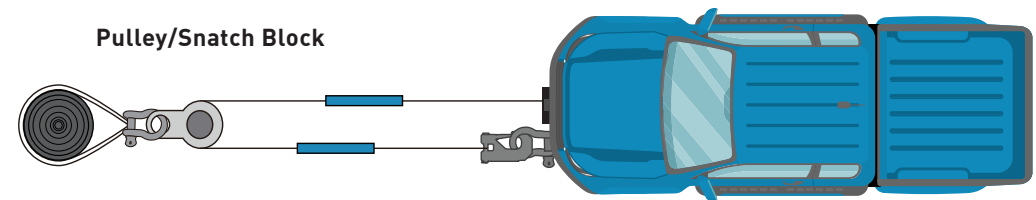
OPERATING INSTRUCTIONS

OPERATING WINCH

1. Take time to assess situation and thoroughly plan pull.
2. Set free-spooling clutch to "FREE-SPOOL" position.
3. Pull synthetic rope and attach to vehicle to be winched. Wear gloves and use hand strap.
4. Secure clevis hook to anchor point: sling, or snatch block. Do not attach clevis hook back onto synthetic rope.
5. Set free-spooling clutch to "ENGAGED" position.
6. Start vehicle engine so that battery is being charged while winching.
7. Slowly winch in synthetic rope just enough to take up slack.
8. Inspect synthetic rope. Make sure there are minimum five (5) wraps of synthetic rope around winch drum.
9. To absorb energy in the event of synthetic rope failure, place a blanket, winch damper, or jacket over the center of the synthetic rope.
10. Clear area. Make sure all spectators are away and that no one is directly in front or behind the vehicle or anchor point.
11. Vehicle to be winched should be placed in neutral and emergency brake released. Only release brake pedal when synthetic rope is under full tension.

OPERATING WINCH CONTINUED

12. While standing aside and clear of tow path, use remote to control winching. If required, wait until motor stops before reversing direction.
 - A. Be sure synthetic rope is winding evenly and tightly around winch drum.
 - B. Vehicle being winched can be slowly driven to add assistance to winching.
 - C. Avoid shock loads; keep synthetic rope under tension. This can damage components and vehicles.
13. Winch is meant for intermittent use. Under full load with a single line rig, do not power in for more than one minute without letting motor cool down for three minutes before resuming winching.
14. Once vehicle is on stable ground, set brakes and place vehicle in park. Winching operating is complete.
15. Set free spooling clutch to "FREE-SPOOL" to release tension on synthetic rope. Winch is not meant to hold loads for long periods of time.
16. Disconnect synthetic rope from vehicle or anchor.
17. Set free spooling clutch to "ENGAGED" position and rewind synthetic rope. Keep hands clear of winch drum and components. Any material already on winch drum should be spooled tightly and neatly. Draw out and re-spool if necessary.
18. Secure hook strap and clevis hook. Disconnect wired remote if applicable.



TROUBLESHOOTING

TROUBLESHOOTING WINCH

SYMPTOM	POSSIBLE CAUSE	SUGGESTED ACTION
Motor does not turn on.	Loose battery cable connections.	Tighten nuts on all cable connections.
	Water has entered motor.	Allow water to drain and winch to dry. Without a load, operate winch in short cycles until completely dry.
	Solenoid sticking.	Tap on Solenoid with handle end of screwdriver.
Motor runs but winch Drum does not turn.	Free spooling clutch not engaged.	Set free spooling clutch to "FREE-SPOOL" position. If problem persists, contact Borne Off-Road.
Motor runs slowly or without normal power.	Insufficient current or voltage.	Battery(s) is weak and may need charging. Always operate winch with vehicle running. Corroded and/or loose battery cables should be cleaned and tightened.
Motor overheating.	Winch run time too long.	Periodically allow winch to cool while operating.
The motor runs in one direction only.	Defective controller	Replace controller.
	Loose battery cable connections.	Corroded and/or loose battery or motor cable connections should be cleaned and tightened.
Motor runs continuously on its own.	Defective solenoid, wireless receiver, or remote control.	Unplug ignition power. Remove negative battery cable from control box.

MAINTENANCE

SYNTHETIC ROPE REPLACEMENT

If synthetic rope has become worn or is beginning to show signs of breaking, replace immediately.

WARNING

Only replace with identical part number from Borne Off-Road. When installing replacement, refer to synthetic rope installation instructions.

SYNTHETIC ROPE MAINTENANCE

- › **Minimize abrasion:** Use movable abrasion sleeve whenever contact with rocks or other objects occurs. Slide abrasion sleeve up and down synthetic rope as required. Abrasion will reduce life of synthetic rope.
- › **Keep clean:** Allowing dirt and debris to enter synthetic rope will lead to abrasion.
- › **Avoid sharp bends:** A sharp bend will decrease synthetic rope's strength substantially under load and may cause damage or failure.

WINCH MAINTENANCE

- › Check tightness of all mounting hardware and electrical connections periodically.
- › Keep winch clean. Remove all dirt and corrosion as required.
- › Do not disassemble mechanical gear system. High temperature lithium grease has been applied at the factory. No user maintenance is required.

WARRANTY

ACTIVATE YOUR WARRANTY

Scan the QR code on the right to activate your warranty. For more Borne Off-Road information on activating your warranty, simply visit www.borne.com/register. Save your receipt for your records.



SCAN ME 

MORE BORNE OFF-ROAD GEAR

Off-road-ready products that will assist in any adventure.

CONTINUE YOUR ADVENTURE

Scan the QR code to the right to be taken to the Borne Off-Road product line.

SCAN ME



SNORKELS & INTAKES



LIFT & LEVELING KITS



SKID PLATES



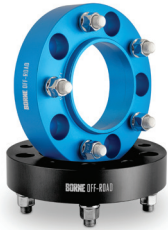
**SOFT SHACKLES
7/16" and 1/2"**



**TREE SAVER STRAPS 3" x 8'
TOW STRAPS 3" x 20' and 3" x 30'**



**HITCH RECEIVER
SHACKLE MOUNTS**



WHEEL SPACERS



BILLET TOW HOOKS



TRACTION BOARD SETS



**HARD CASES 53QT, 95QT,
116QT, and 169QT**



**MOLLE POUCHES 0.7L, 1L, 1.5L,
2.2L, 4L, and 16 LITERS**



**HEAVY-DUTY RATCHET
TIE-DOWN KITS**



**3/4 STEEL D-RING
SHACKLE SET, 2 PIECES**



**8-TON SNATCH BLOCK and
10-TON SNATCH BLOCK**



**ALUMINUM RECOVERY RING,
LARGE (TRUCK & JEEP)**



**SOFT LOOP
TIE-DOWN STRAPS**



**KINETIC ENERGY RECOVERY
ROPES 7/8" and 3/4"**



**SHACKLED 2-INCH HITCH
RECEIVER**



SHARE YOUR ADVENTURES

Use the tags below to share your experiences.
#Borneoffroad, #Adventureborne, #Trailborne



ACTIVATE YOUR WARRANTY

Simply scan the QR code above or visit borne.com/register
Save the receipt for your records.

