



BOURNE OFF-ROAD[®]
by  **MISHIMOTO**

INSTALLATION GUIDE

2017+ Ford F150 Raptor Transfer Case Skid Plate

SKU: BNSD-F35T-17TC

TABLE OF CONTENTS

- Pg 1** RESOURCES AND CONTACT INFORMATION
- Pg 2** IMPORTANT SAFETY INFORMATION
 - SUPPLIED PARTS
 - REQUIRED TOOLS
 - INSTALLATION INSTRUCTIONS
- Pg 4** DISPOSAL INSTRUCTIONS
- WARRANTY INFORMATION

RESOURCES & CONTACT

-  **CALL 1-877-GOMISHI**
CUSTOMER SERVICE HOURS: MON-FRI 8:30AM-5:00PM EST
-  **MISHIMOTO**
-  **GOMISHIMOTO**
-  **MISHIMOTO**
-  **WEBSITE**
WWW.MISHIMOTO.COM
-  **ENGINEERING BLOG**
WWW.MISHIMOTO.COM/ENGINEERING

IMPORTANT SAFETY INFORMATION

- Mishimoto recommends you use safety glasses and protective gloves during the installation of our products
- Raise vehicle only on jack stands or on a vehicle lift
- Allow vehicle to cool completely prior to attempting installation
- Do not run the engine or drive the vehicle while overheating; serious damage can occur
- Please dispose of any liquids properly
- Mishimoto is not responsible for any vehicle damage or personal injury due to installation errors, misuse, or removal of Mishimoto products
- If you need any assistance while installing our products, reach out to our Customer Service Team at 1-877-GOMISHI

SUPPLIED PARTS

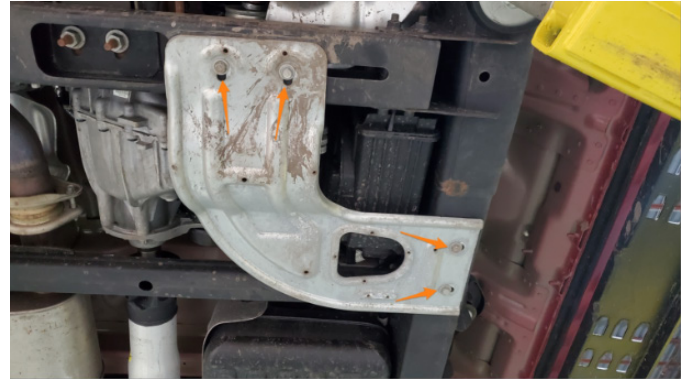
- (1) TRANSFER CASE SKID PLATE
- (1) UPPER BRACKET
- (1) LOWER BRACKET
- (3) M8 BOLTS
- (3) FLAT WASHERS
- (3) LOCK WASHERS

REQUIRED TOOLS

- 13MM WRENCH
- 13MM SOCKET
- SOCKET DRIVER
- TORQUE WRENCH

INSTALLATION INSTRUCTIONS

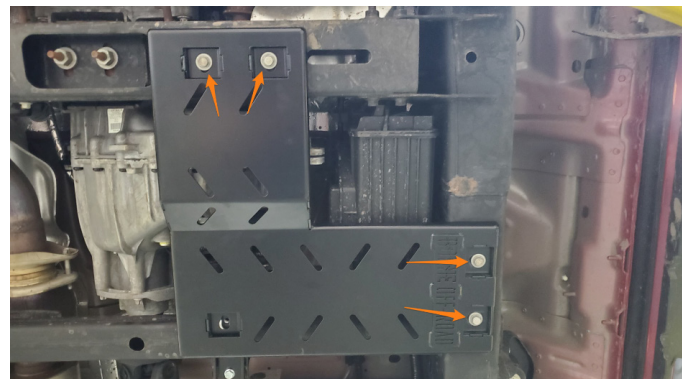
01. Using a 13mm socket, remove the transfer case skid plate from the vehicle by removing the (4) bolts. (See first image on right)



02. Using a 13mm socket, assemble the upper and lower brackets with (2) of the supplied bolts, flat washers, & lock washers around the frame as shown below. Leave the bolts loose enough that the location of the bracket on the frame can be adjusted.

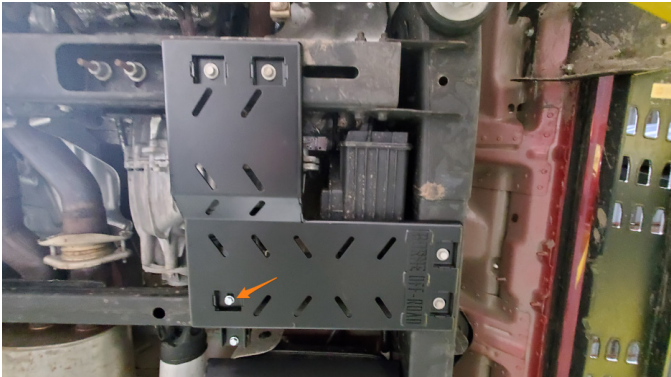


03. Using a 13mm socket, install the Borne Off-Road transfer case skid plate with the (4) bolts that were removed in step 1. Do not fully tighten the bolts yet.



Continued on next page

04. Align the bracket installed in step 2 with the slot in the skid plate. Using a 13mm socket, attach the skid plate to the bracket with the remaining (1) supplied bolt, flat washer, & lock washer, and tighten to 22 lb-ft (30 N-m).

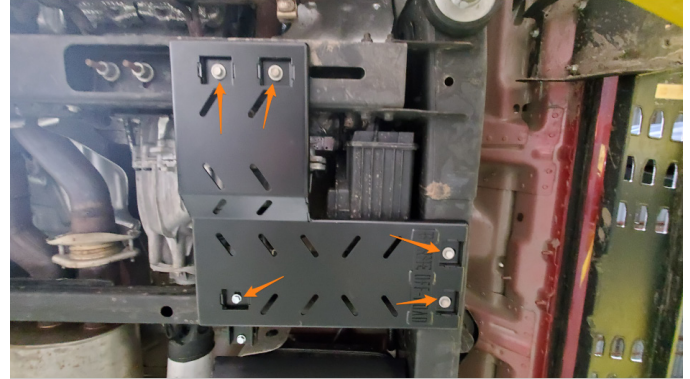


05. Using a 13mm socket or wrench, fully tighten the (2) bolts that assemble the bracket around the frame from step 2. Tighten to 22 lb-ft (30 N-m).



06. Using a 13mm socket, fully tighten all (5) mounting bolts to 22 lb-ft (30 N-m). (See image first image on right)

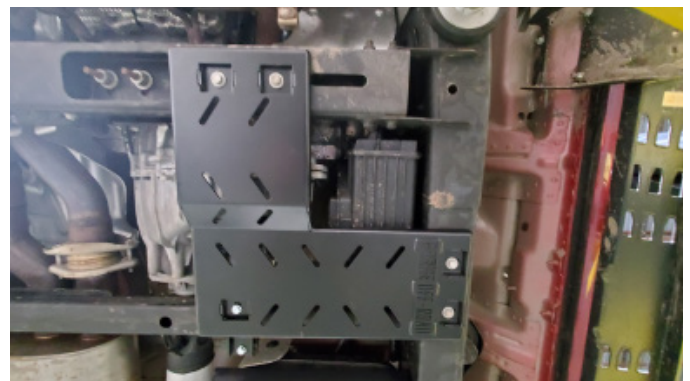
Congratulations! You have completed your installation.



BEFORE



AFTER



DISPOSAL INSTRUCTIONS

- › Do not dispose of any product as unsorted municipal waste. Use separate collection facilities. Contact your local authority for information regarding the collection systems available.
- › Never improperly dispose of any coolant, oil, or other chemicals.

WARRANTY INFORMATION



- › All claims must be accompanied with a picture of the Mishimoto product showing the issue for which the claim is being submitted.
- › Mishimoto asks that the customer inspect their purchased item for any damage immediately upon arrival.
- › Any product deemed dead on arrival (DOA) must be claimed within 14 business days of delivery. Claims outside of this time frame will not be covered under the Mishimoto Lifetime Warranty.
- › This warranty does not include payment and/or reimbursement of the cost of labor in connection with the removal of any product returned pursuant to the warranty policy or in connection with the installation of any replacement items provided under the warranty policy.
- › Mishimoto has the right to refuse a claim at any time.

- › When Mishimoto accepts a claim, Mishimoto retains full discretion to choose if it will: (i) repair or replace purchaser's original Mishimoto product; (ii) replace purchaser's original Mishimoto product with the most current available model; or (iii) provide the purchaser with a gift card redeemable on [Mishimoto.com](https://www.mishimoto.com) in the amount of the original purchase price of the original Mishimoto product. The provision of a replacement of a Mishimoto product is subject to availability and Mishimoto retains the right to substitute any warranty claim item with a comparable item or credit at any time.
- › If Mishimoto determines that it will provide a replacement item in connection with a claim under this warranty policy, and such item is out of stock, Mishimoto will place the customer on backorder and ship the replacement product to the purchaser once it becomes available.
- › Mishimoto is not liable for incorrect shipments in connection with a claim if a claim form is completed incorrectly, or if a model number is not included in a claim.
- › If you have a vehicle equipped with an automatic transmission, please make sure to specify this within the text box on the claim form. Mishimoto is not responsible for incorrect replacement shipments if transmission type is not indicated.



WARNING
Cancer and
Reproductive Harm
www.P65Warnings.ca.gov

This product can expose you to chemicals which are known to the state of California to cause cancer. For more information visit: www.p65warnings.ca.gov