



INSTALLATION GUIDE

2.5IN FRONT LEVELING KIT FITS 2007+ TOYOTA TUNDRA

SKU: BNLK-TUN-07-25

TABLE OF CONTENTS

- Pg 1** RESOURCES AND CONTACT INFORMATION
- Pg 2** IMPORTANT SAFETY INFORMATION
 - SUPPLIED PARTS
 - REQUIRED TOOLS
 - INSTALLATION INSTRUCTIONS
- Pg 6** DISPOSAL INSTRUCTIONS
 - WARRANTY INFORMATION

RESOURCES & CONTACT

-  **CALL 1-877-GOMISHI**
CUSTOMER SERVICE HOURS: MON-FRI 8:30AM-5:00PM EST
-  **MISHIMOTO**
-  **GOMISHIMOTO**
-  **MISHIMOTO**
-  **WEBSITE**
WWW.MISHIMOTO.COM
-  **ENGINEERING BLOG**
WWW.MISHIMOTO.COM/ENGINEERING

IMPORTANT SAFETY INFORMATION

- › Mishimoto recommends you use safety glasses and protective gloves during the installation of our products
- › Raise vehicle only on jack stands or on a vehicle lift
- › Allow vehicle to cool completely prior to attempting installation
- › Do not run the engine or drive the vehicle while overheating; serious damage can occur
- › Please dispose of any liquids properly
- › Mishimoto is not responsible for any vehicle damage or personal injury due to installation errors, misuse, or removal of Mishimoto products
- › If you need any assistance while installing our products, reach out to our Customer Service Team at 1-877-GOMISHI

SUPPLIED PARTS

2X ALUMINUM STRUT SPACERS
 8X M10 HEX HEAD BOLTS

REQUIRED TOOLS

FLOOR JACK	3/8" RATCHET
JACK STANDS	1/2" RATCHET
WHEEL CHOCKS	1/2" BREAKER BAR
HAMMER	17MM SOCKET
PRYBAR	10MM DEEP SOCKET
NEEDLE NOSE PLIERS	14MM DEEP SOCKET
PICK TOOL	19MM DEEP SOCKET
TRIM CLIP TOOL	22MM DEEP SOCKET
22MM WRENCH	24 MM DEEP SOCKET

INSTALL TIME 5 HOURS

INSTALL DIFFICULTY

DISCLAIMERS

- › Raise vehicle only on jack stands or a vehicle lift.
Never use only a jack.
- › Allow vehicle to completely before attempting installation
- › Do not run engine or drive vehicle while overheating, as serious damage may occur.
- › Please dispose of any liquids properly.

INSTALLATION INSTRUCTIONS

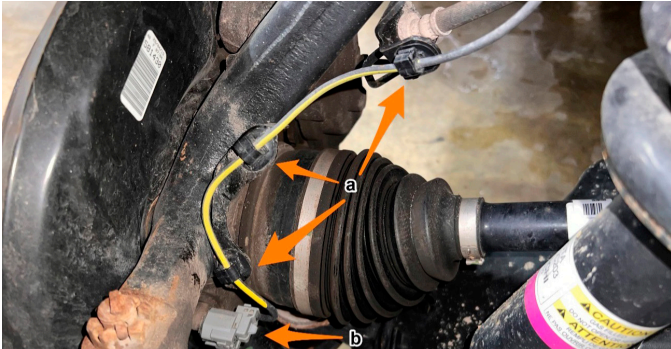
01. Place wheel chocks on both sides of at least one rear tire and loosen the front wheel bolts. Jack up the front of the vehicle and support at the appropriate points with jack stands. Remove the front wheels.

02. Turn the knuckle, so the brake caliper faces outward. Then, using a 10mm socket, remove the wheel speed sensor bracket from the knuckle.



Continued on next page

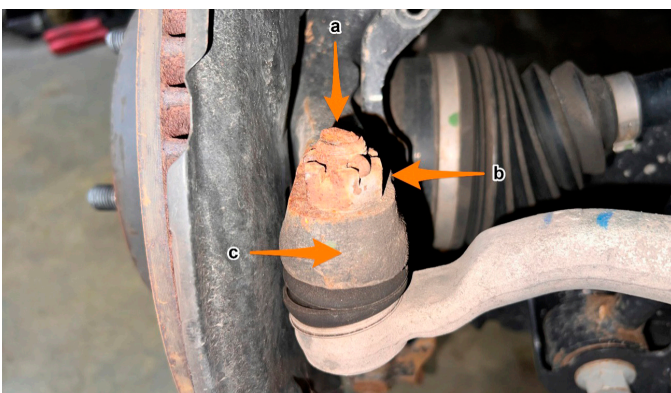
03. Turn the knuckle, so the brake caliper faces inward. Using a trim clip tool, remove the three WSS wire tree clips (a). Use a pick tool to disengage the connector latch and unplug the connector (b) on the back of the knuckle. Tuck the wire out of the way.



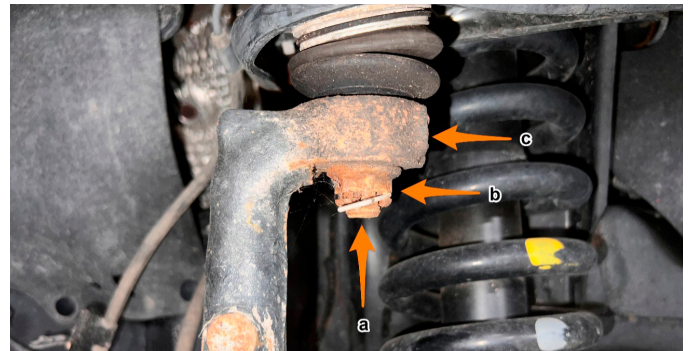
04. Using a 19 mm socket, remove the upper sway bar end link nut.



05. Remove the cotter pin (a) from the tie rod end castle nut using needle nose pliers, then use a 24mm socket to loosen the nut (b). Leave the nut partially threaded on for now. Hit the knuckle here (c) using a hammer until the taper pops loose. Leave the nut partially threaded on to keep the knuckle from rotating during the next step.



06. Using pliers, remove the cotter pin (a) from the upper ball joint end castle nut, then use a 19mm socket to loosen the nut (b). Leave the nut partially threaded on for now. Using a hammer, hit the knuckle in spot (c) until the taper pops loose. Pry down on the upper control arm and fully remove the nut. You can also fully remove the tie rod end nut at this point.



07. Tie up the top end of the knuckle to the lower control arm to keep it from hanging on the brake hose.

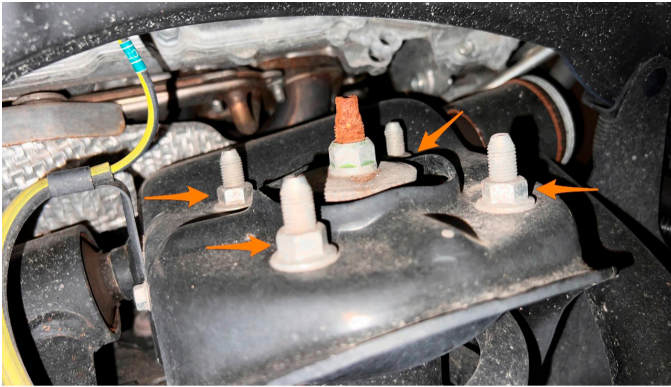


08. Using a 22mm socket and wrench, remove the lower strut bolt and nut.

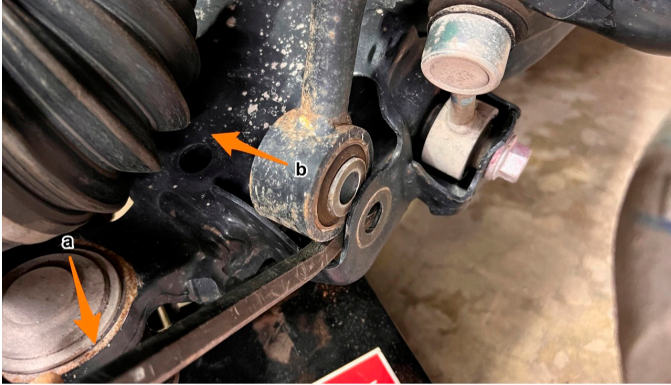


Continued on next page

09. Using a 14mm socket, remove the four upper strut nuts.



10. Push/pry down on the lower control arm (a) until you can get the bottom of the strut (b) out of the mount. You may want someone else to help you with this step as it can be difficult. Once clear of the bottom mount, remove the strut from the vehicle. Watch the brake line during this step! Make sure not to put any load on it.



11. Place one of the aluminum spacers on top of the strut. The bolt/hole pattern is purposely not symmetric, so it will only fit in one orientation. Next, install two of the provided M10 bolts into the spacer as shown.



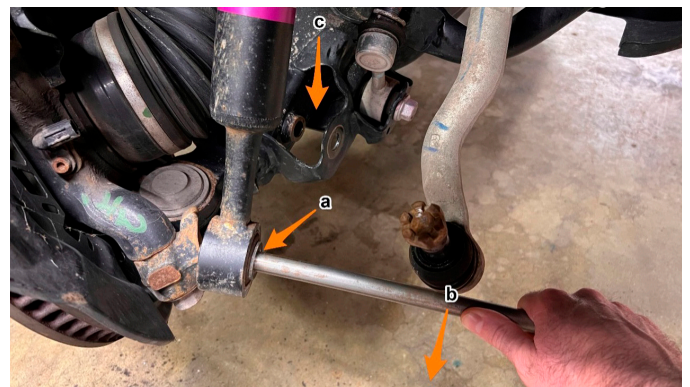
12. Using a 14mm socket and the factory upper strut nuts, fasten the spacer to the strut, counter holding against the bolts with a pry bar as shown. Remove the two M10 bolts once all four nuts are tightened.



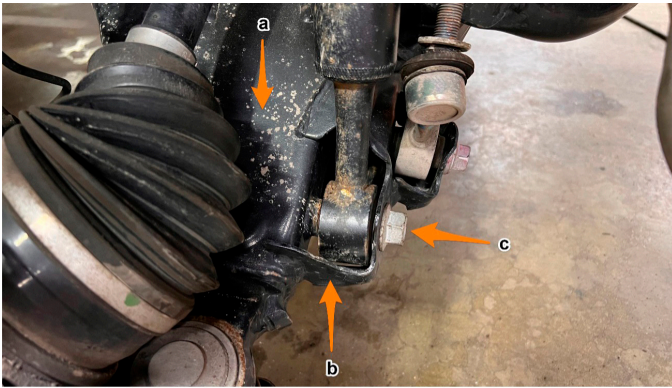
13. Reinstall the top end of the strut in the vehicle as shown and partially thread the provided M10 bolts into the top of the strut.



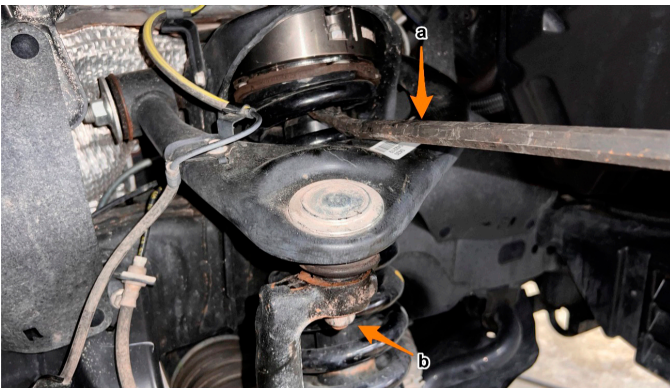
14. Using a metal rod, long extension, or pry bar that fits inside the lower strut bushing (a), rotate the bottom of the strut clockwise (b) until the faces of the bushing line up with the slot in the lower control arm (c). This will require a good amount of force.



15. Pry/push down on the lower control arm (a) until there is enough clearance to get the bottom of the strut over this part (b) and into the slot in the control arm. Next, install the lower strut bolt (c) and nut. You may want someone else to help you with this step as it can be difficult. Again, watch the brake line during this step!



16. Using a 17mm socket, fully tighten the 4 upper strut bolts and untie the knuckle. Next, reinstall the upper control arm ball joint by jacking up on the lower control arm and prying down on the upper control arm (a) until you can get the taper into the knuckle. Keep prying on the upper control arm while tightening the ball joint nut (b) to prevent the taper from spinning.



17. Reverse steps 3 through 6 and repeat the procedure for the other side.

18. Torque all fasteners to the manufacturer's recommended specifications.

19. Reinstall the wheels, lower the vehicle to the ground, and torque the wheel bolts.

*Getting a front-end alignment is recommended after installing a leveling kit

Congratulations! You have finished your installation!

Continued on next page

DISPOSAL INSTRUCTIONS

- › Do not dispose of any product as unsorted municipal waste. Use separate collection facilities. Contact your local authority for information regarding the collection systems available.
- › Never improperly dispose of any coolant, oil, or other chemicals.

WARRANTY INFORMATION



- › All claims must be accompanied with a picture of the Mishimoto product showing the issue for which the claim is being submitted.
- › Mishimoto asks that the customer inspect their purchased item for any damage immediately upon arrival.
- › Any product deemed dead on arrival (DOA) must be claimed within 14 business days of delivery. Claims outside of this time frame will not be covered under the Mishimoto Lifetime Warranty.
- › This warranty does not include payment and/or reimbursement of the cost of labor in connection with the removal of any product returned pursuant to the warranty policy or in connection with the installation of any replacement items provided under the warranty policy.
- › Mishimoto has the right to refuse a claim at any time.

- › When Mishimoto accepts a claim, Mishimoto retains full discretion to choose if it will: (i) repair or replace purchaser's original Mishimoto product; (ii) replace purchaser's original Mishimoto product with the most current available model; or (iii) provide the purchaser with a gift card redeemable on Mishimoto.com in the amount of the original purchase price of the original Mishimoto product. The provision of a replacement of a Mishimoto product is subject to availability and Mishimoto retains the right to substitute any warranty claim item with a comparable item or credit at any time.
- › If Mishimoto determines that it will provide a replacement item in connection with a claim under this warranty policy, and such item is out of stock, Mishimoto will place the customer on backorder and ship the replacement product to the purchaser once it becomes available.
- › Mishimoto is not liable for incorrect shipments in connection with a claim if a claim form is completed incorrectly, or if a model number is not included in a claim.
- › If you have a vehicle equipped with an automatic transmission, please make sure to specify this within the text box on the claim form. Mishimoto is not responsible for incorrect replacement shipments if transmission type is not indicated.



WARNING
Cancer and
Reproductive Harm
www.P65Warnings.ca.gov

This product can expose you to chemicals which are known to the state of California to cause cancer. For more information visit: www.p65warnings.ca.gov