



# INSTALLATION GUIDE

**2005+ TOYOTA TACOMA 2-INCH FRONT LEVELING KIT**

**SKU: BNLK-TACO-05-F2**

## TABLE OF CONTENTS

- Pg 1** RESOURCES AND CONTACT INFORMATION
- Pg 2** IMPORTANT SAFETY INFORMATION  
REQUIRED TOOLS  
INSTALLATION INSTRUCTIONS
- Pg 5** DISPOSAL INSTRUCTIONS  
WARRANTY INFORMATION

## RESOURCES & CONTACT

-  **CALL 1-877-GOMISHI**  
CUSTOMER SERVICE HOURS: MON-FRI 8:30AM-5:00PM EST
-  **MISHIMOTO**
-  **GOMISHIMOTO**
-  **MISHIMOTO**
-  **WEBSITE**  
[WWW.MISHIMOTO.COM](http://WWW.MISHIMOTO.COM)
-  **ENGINEERING BLOG**  
[WWW.MISHIMOTO.COM/ENGINEERING](http://WWW.MISHIMOTO.COM/ENGINEERING)

## IMPORTANT SAFETY INFORMATION

- › Mishimoto recommends you use safety glasses and protective gloves during the installation of our products
- › Raise vehicle only on jack stands or on a vehicle lift
- › Allow vehicle to cool completely prior to attempting installation
- › Do not run the engine or drive the vehicle while overheating; serious damage can occur
- › Please dispose of any liquids properly
- › Mishimoto is not responsible for any vehicle damage or personal injury due to installation errors, misuse, or removal of Mishimoto products
- › If you need any assistance while installing our products, reach out to our Customer Service Team at 1-877-GOMISHI

## PARTS INCLUDED

(2X) ALUMINUM STRUT SPACERS	(6X) M10 FLAT WASHERS
(6X) M10 HEX BOLTS	(6X) M10 NYLON LOCK NUTS

## REQUIRED TOOLS

FLOOR JACK	3/8" RATCHET
JACK STANDS	1/2" RATCHET
WHEEL CHOCKS	1/2" BREAKER BAR
HAMMER	14MM SOCKET
PRYBAR	17MM SOCKET
NEEDLE NOSE PLIERS	10MM DEEP SOCKET
PICK TOOL	19MM DEEP SOCKET
TRIM CLIP TOOL	21MM DEEP SOCKET
19MM WRENCH	

## INSTALL TIME 4 HOURS

## INSTALL DIFFICULTY

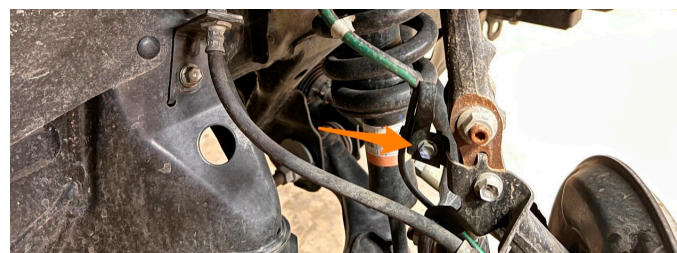
## DISCLAIMERS

- › This instruction manual is focused on installing a Mishimoto part and may not comprehensively cover removal and reinstallation of factory components
- › Raise vehicle only on jack stands or a vehicle lift. Never use only a jack.
- › Allow vehicle to cool completely before attempting installation
- › Do not run engine or drive vehicle while overheating, as serious damage may occur.
- › Please dispose of any liquids properly.

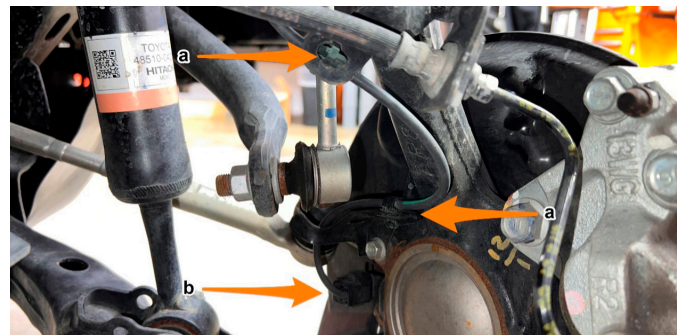
## INSTALLATION INSTRUCTIONS

**1.** Place wheel chocks on both sides of at least one rear tire and use a 21mm socket with a breaker bar to loosen the front wheel bolts. Jack up the front of the vehicle and support at the appropriate points with jack stands. Remove the front wheels.

**2.** Turn the knuckle, so the brake caliper faces outward, then, using a 10mm socket, remove the wheel speed sensor bracket from the knuckle.

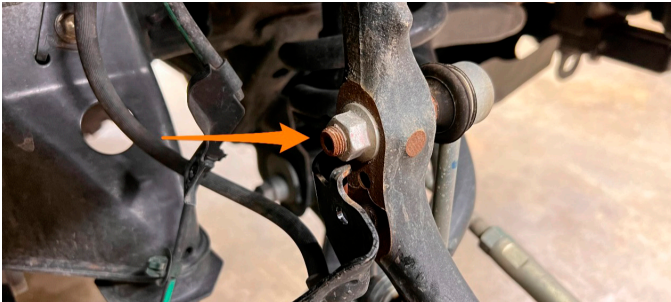


**3.** Using a trim clip tool, remove the two WSS wire tree clips (a) and unplug the connector (b) on the back of the knuckle and tuck the wire out of the way.

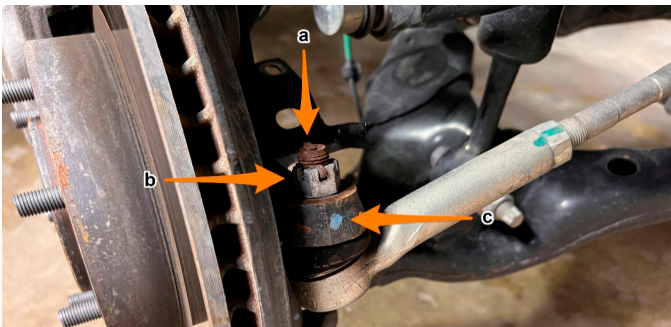


Continued on next page

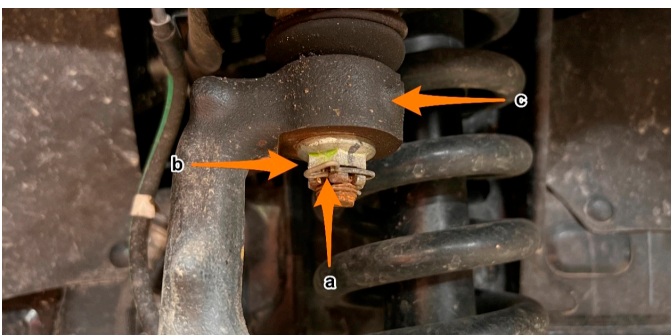
**4.** Turn the wheels straight again. Using a 17mm socket, remove the sway bar end link nut on the knuckle.



**5.** Using pliers, remove the cotter pin (a) from the tie rod end castle nut, then use a 19mm socket to loosen the nut (b). Leave the nut partially threaded on for now. Next, using a hammer, hit the knuckle where the blue mark is (c) until the taper pops loose. Leave the nut partially threaded on to keep the knuckle from rotating during the next step.



**6.** Using pliers, remove the cotter pin (a) from the upper ball joint end castle nut, then use a 19mm socket to loosen the nut (b). Leave the nut partially threaded on for now. Using a hammer, hit the knuckle in spot (c) until the taper pops loose. Pry down on the upper control arm and fully remove the nut. You can also fully remove the tie rod end nut at this point.



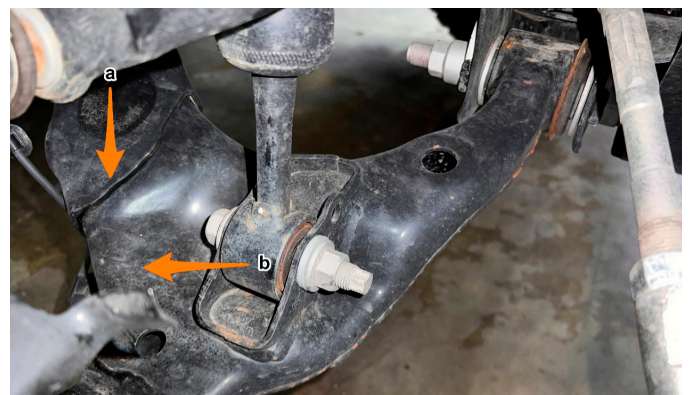
**7.** Using a 19mm socket and wrench, remove the lower strut bolt and nut.



**8.** Use a 14mm socket, remove the three upper strut nuts. The third nut is hidden behind the bushing.

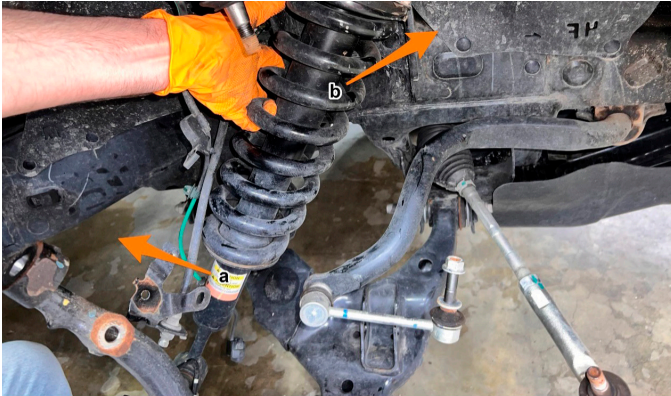


**9.** Push/pry down on the lower control arm (a) until you can get the bottom of the strut (b) out of the mount. Watch the brake line during this step! Make sure not to put any load on it.

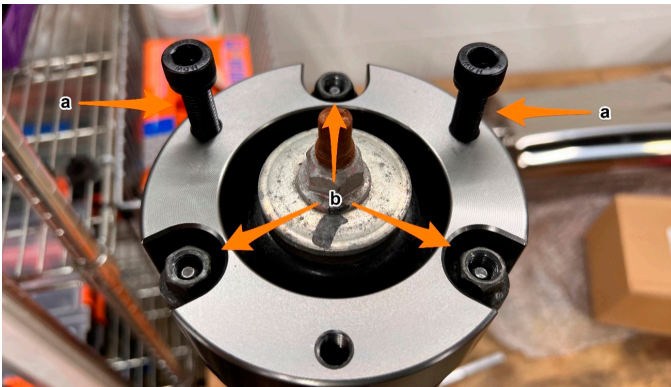


Continued on next page

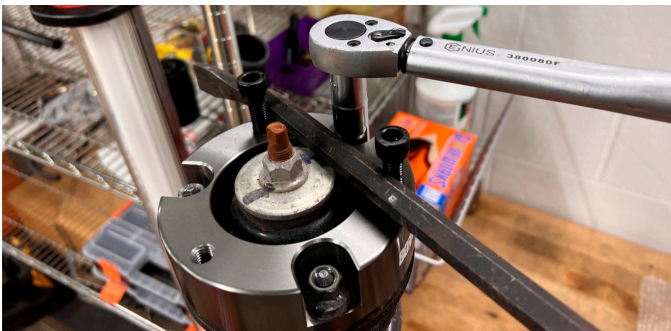
**10.** Swing the bottom of the strut (a) toward the rear of the vehicle to clear the lower control arm and pull the strut out the top (b).



**11.** Place one of the aluminum spacers on top of the strut as shown and install two of the provided M10 bolts (a) into the spacer. The bolt/hole pattern is purposely not symmetric, so it will only fit in one orientation. Install two of the provided M10 bolts into the spacer, as shown. Partially thread the factory strut nuts (b) onto the threads.



**12.** Using a 14mm socket, fasten the spacer to the strut, counter holding against the bolts with a pry bar as shown. Remove the two M10 bolts once all three nuts are tightened.



**13.** Reinstall the strut into the vehicle, top end first. Next, pry/push down on the lower control arm until there is enough clearance to get the bottom of the strut into the mount on the lower control arm. You may want someone else to help you with this step as it can be difficult.

**14.** Using a 17mm socket, install the top of the strut to the tower with the supplied M10 bolts. Next, install the bottom strut bolt and nut.

**15.** Reinstall the upper control arm ball joint by jacking up on the lower control arm and prying down on the upper control arm until you can get the taper into the knuckle. Keep prying on the upper control arm while tightening the ball joint nut to prevent the taper from spinning.

**16.** Reverse steps 6 through 3 and repeat the procedure for the other side.

**17.** Torque all fasteners to the manufacturer's recommended specifications.

**18.** Reinstall the wheels, lower the vehicle to the ground, and torque the wheel bolts.

**NOTE:** \*Getting a front-end alignment is recommended after installing a leveling kit.

**Congratulations! You have finished your installation!**

Continued on next page

## DISPOSAL INSTRUCTIONS

- › Do not dispose of any product as unsorted municipal waste. Use separate collection facilities. Contact your local authority for information regarding the collection systems available.
- › Never improperly dispose of any coolant, oil, or other chemicals.

## WARRANTY INFORMATION



- › All claims must be accompanied with a picture of the Mishimoto product showing the issue for which the claim is being submitted.
- › Mishimoto asks that the customer inspect their purchased item for any damage immediately upon arrival.
- › Any product deemed dead on arrival (DOA) must be claimed within 14 business days of delivery. Claims outside of this time frame will not be covered under the Mishimoto Lifetime Warranty.
- › This warranty does not include payment and/or reimbursement of the cost of labor in connection with the removal of any product returned pursuant to the warranty policy or in connection with the installation of any replacement items provided under the warranty policy.
- › Mishimoto has the right to refuse a claim at any time.

- › When Mishimoto accepts a claim, Mishimoto retains full discretion to choose if it will: (i) repair or replace purchaser's original Mishimoto product; (ii) replace purchaser's original Mishimoto product with the most current available model; or (iii) provide the purchaser with a gift card redeemable on [Mishimoto.com](https://www.mishimoto.com) in the amount of the original purchase price of the original Mishimoto product. The provision of a replacement of a Mishimoto product is subject to availability and Mishimoto retains the right to substitute any warranty claim item with a comparable item or credit at any time.
- › If Mishimoto determines that it will provide a replacement item in connection with a claim under this warranty policy, and such item is out of stock, Mishimoto will place the customer on backorder and ship the replacement product to the purchaser once it becomes available.
- › Mishimoto is not liable for incorrect shipments in connection with a claim if a claim form is completed incorrectly, or if a model number is not included in a claim.
- › If you have a vehicle equipped with an automatic transmission, please make sure to specify this within the text box on the claim form. Mishimoto is not responsible for incorrect replacement shipments if transmission type is not indicated.



**WARNING**  
Cancer and  
Reproductive Harm  
[www.P65Warnings.ca.gov](https://www.P65Warnings.ca.gov)

This product can expose you to chemicals which are known to the state of California to cause cancer. For more information visit: [www.p65warnings.ca.gov](https://www.p65warnings.ca.gov)