

BORNE

OFF-ROAD®

3-INCH FRONT LEVELING KIT

2007-2019 CHEVY/GMC SILVERADO/SIERRA 1500

INSTALLATION GUIDE

PARTS INCLUDED

- 2PC Aluminum Strut Spacers
- 6PC M10 Socket Head Bolts
- 6PC M10 Nylon Lock Nuts
- 6PC M10 Flat Washers
- 2PC Front Ride Height Sensor Spacer Brackets
- 2PC M6 Hex Bolt
- 2PC M6 Hex Nut

INSTALL TIME

4 Hours

DIFFICULTY

4/5

REQUIRED TOOLS

- | | |
|---|--------------------|
| Floor Jack | 1/4"-Drive Ratchet |
| Jack Stands | 3/8"-Drive Ratchet |
| Wheel Chocks | 10mm Socket |
| Hammer | 15mm Deep Socket |
| Pop Clip Removal
Tool | 17mm Deep Socket |
| Prybar | 19mm Deep Socket |
| Bench Vise
<i>(or some way to hold
the strut from turning)</i> | 21mm Deep Socket |
| | 8mm Allen/Hex Key |
| | Wrench or Socket |
| Marker | |
| 15mm Wrench | |
| 18mm Wrench | |

INSTRUCTIONS

01. With the vehicle still on the ground, loosen the front wheel bolts.
02. Place wheel chocks on both sides of at least one rear tire, jack up the front of the vehicle, and support at the appropriate points with jack stands.
03. Remove the front wheels and support the lower control arm with a floor jack.
04. Turn the wheel so the brake caliper faces outward.
05. Using a 10mm socket, remove the bolts for the two brackets shown



06. Use a 15mm deep socket to loosen the sway bar end link bolt, counter-holding the top nut with a 15mm wrench. Remove the nut, washer, and upper rubber bushing. Using a 19mm socket, remove the two brake caliper bolts. Remove the caliper and secure out of the way. Do not let it hang from the brake line!

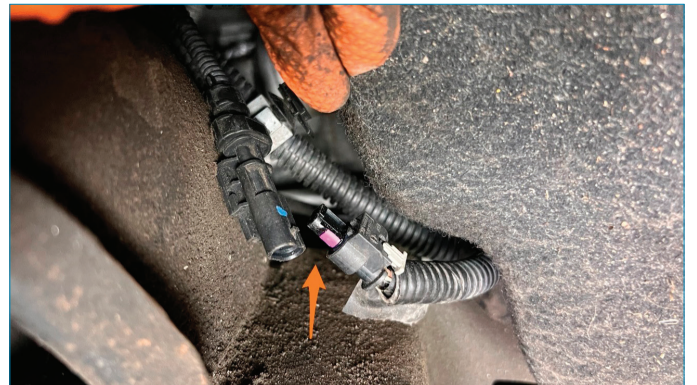


07. Using an 18mm wrench, remove the upper control arm ball joint nut. Using a hammer, hit the knuckle where the tapered part of the ball joint sits until it pops loose. If it does not come loose, reinstall the nut

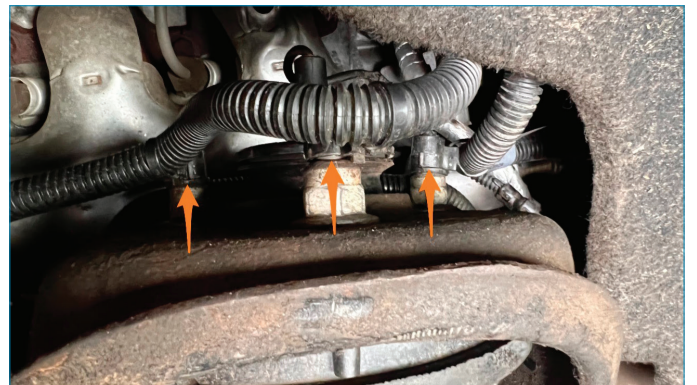
loosely and apply pressure to the end of the ball joint stud while hitting the knuckle.



08. If equipped, unplug the connector for the Magnaride sensor.



09. Using the pop clip removal tool, pry the harness clips off the strut threads then use a 18mm wrench to remove the 3 upper strut nuts.

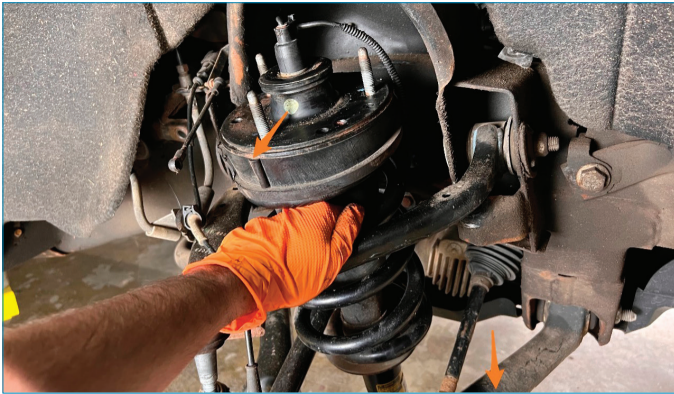


10. Using a 17mm deep socket, remove the two lower strut bolts. Let the suspension down by lowering the jack from the lower control arm.

CONTINUED ON FOLLOWING PAGE



11. Push down on the lower control arm and tip the top of the strut toward you.



12. Remove the strut by lifting it up out of the control arm.

13. Clamp the lower bushing part of the strut in a vise so it holds the strut upright. Do not clamp on the strut tube. The bushing should be parallel to the vice jaws and one of the upper strut studs should be facing you. If two upper studs are facing you, loosen the vise and rotate the strut 180 degrees.



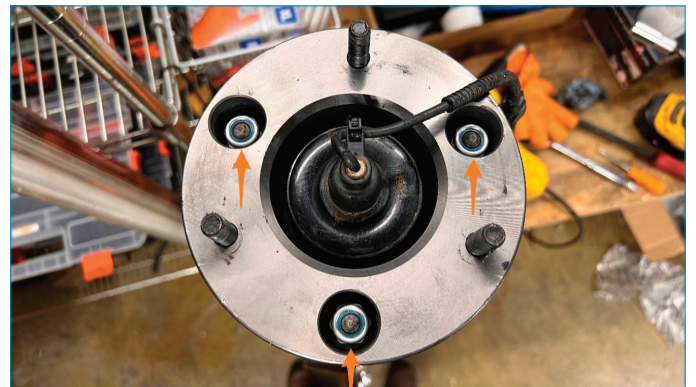
14. Install the provided M10 socket head bolts into the threaded holes in the aluminum spacer as shown. The bolt heads should be recessed in the spacer with the threads protruding out the other side.



15. The threads only line up with the strut tower holes in one orientation. Test fit the spacer to find the correct orientation and make a small mark in line with the bolt thread.



16. Place the spacer on the top of the strut and fasten it using the provided M10 locknuts and washers.



CONTINUED ON FOLLOWING PAGE

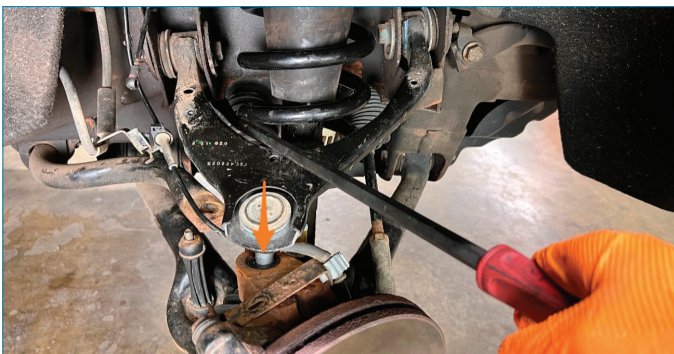
17. Using a prybar between the spacer threads, rotate the top part of the strut until your mark on the spacer and the corresponding bolt threads are facing closest to you and centered relative to the bushing. If the strut has not been rotated since you removed it from the truck, this should be 180 degrees of rotation.



18. Unclamp the strut from the vise and reinstall through the upper control arm using the pry bar to move the lower control arm down far enough to get the top of the strut into the strut tower. Install the 3 upper strut nuts and 2 lower strut bolts. If equipped, plug the Magnaride connector back in.



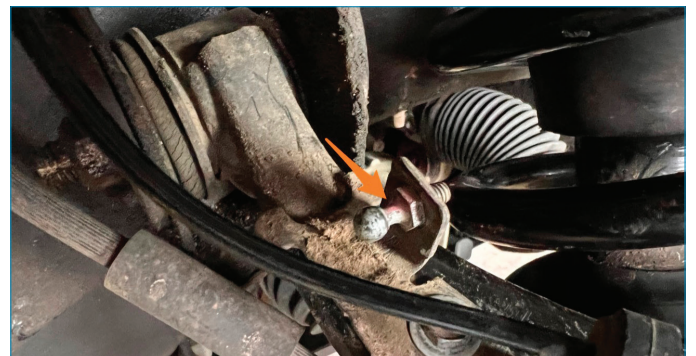
19. Reinstall the upper ball joint by using the pry bar to rotate the upper control arm down, aligning the ball joint taper with the hole in the knuckle. Install the ball joint nut. You can also jack up on the lower control arm to press the ball joint back into the knuckle and prevent the stud from spinning.



20. Reinstall the sway bar end link bushing, washer and nut. You may need to pry down on the sway bar to get the nut threaded on.



21. (If NOT equipped with Magnaride, skip to step 23) Use the pop clip removal tool to remove the lower part of the ride height sensor linkage (on the upper control arm) and using a 10mm deep socket, remove the ball stud from the bracket.



22. Using the provided 6mm bolt, install the spacer plate onto the control arm bracket and the ball stud into the spacer plate as shown. Pop the linkage back on the ball stud.



23. Reinstall the brake caliper, wheel speed sensor wire and brake line brackets.

24. Torque all fasteners to manufacturer's recommended specifications.

25. Reinstall wheel, lower vehicle to ground, and torque the wheel bolts.

**A front-end alignment is recommended after installing a leveling kit.*