



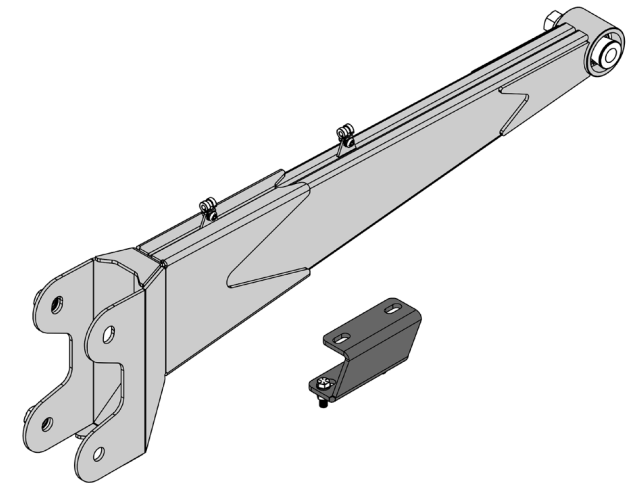
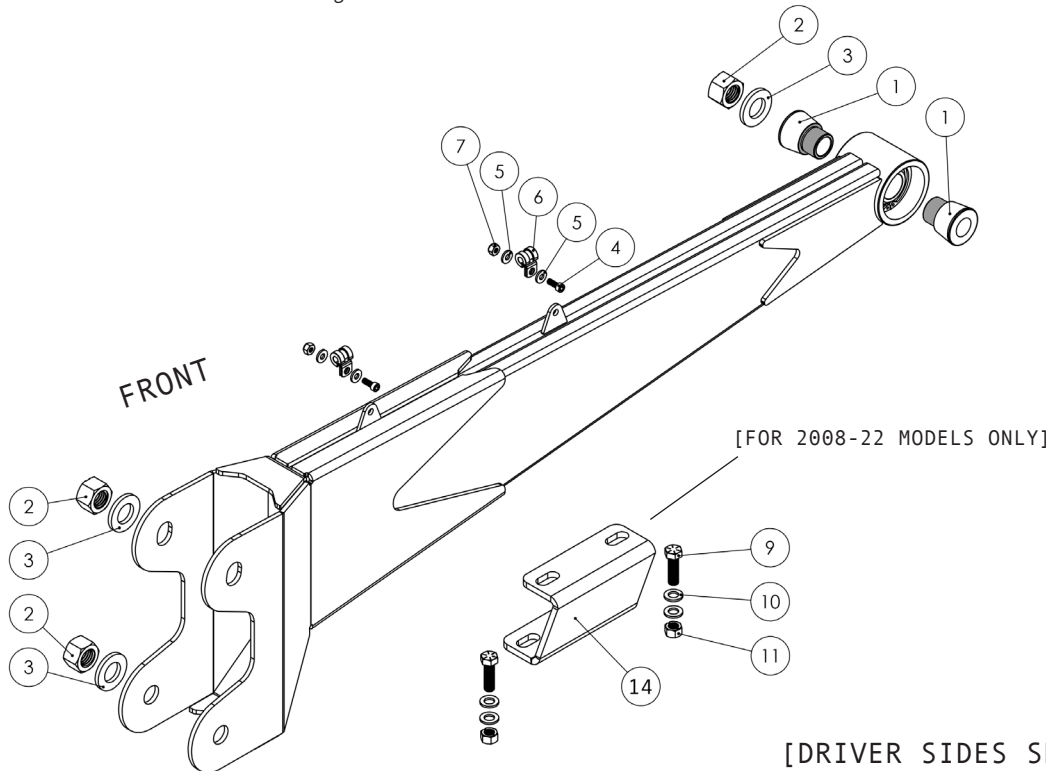
CAMBURG FORD F-250/350 4WD '05-22 UNIBALL RADIUS ARM KIT PART# CAM-110204

Thanks for purchasing our uniball radius arm kit for your Ford F-250/350. If you are not installing these yourself have a qualified shop do so. These radius arms were designed to replace the OEM versions and work with suspension kits with 2-3.5" of lift. Check the parts list to make sure you have every component prior to installing. Camburg Engineering has made every attempt to insure you receive the highest quality components in the most complete manner. This is a guide to help you through the process with some recommended torque specs & notes. It's your responsibility to ensure parts are being installed correctly using the correct tools and procedures to the proper torque. For step-by-step instructions refer to a Ford Service manual.

Important Notes:

- These are not compatible on models equipped with Ford's OnBoard Scales & Smart Hitch package (Limited, Platinum, King Ranch & Lariat)
- You will re-use the OEM M18 bolts with the new supplied locking nuts and washers.
- You will re-use the OEM hardware to attach our sway-bar mount to the frame (2008-22 models only).
- Position the sway-bar mount and sway-bar as far forward for ample coil spring clearance.
- Make sure all brake, ABS, vacuum and electrical lines are routed correctly, will not be pinched as the suspension cycles and are not under tension at full droop.
- Apply anti-seize to uniball spacer surfaces (shaded gray in diagram).
- Use RED loctite on all fasteners > 1/4" dia.
- Use BLUE loctite on all fasteners < 1/4" dia.
- Inspect and re-torque all hardware and components after the first 500 miles, inspect at your scheduled maintenance intervals and whenever using the vehicle off-road.

ID	PART NBR	DESCRIPTION	QTY
		UNIBALL RADIUS ARM	2
14		FRONT SWAY-BAR MOUNT (FOR 2008-22 MODELS ONLY)	2
1	960494	UNIBALL PIVOT SPACER	4
2	950208	M18 x 2.5 STOVER LOCK NUT	6
3	950017	3/4" SAE GRADE 8 ROUND WASHER	6
4	950018	10-32 X 3/4" ALLEN HEAD SCREW	4
5	950020	10-32 STAINLESS ROUND WASHER	8
6	950026	1/4" STAINLESS RUBBER CLAMP	4
7	950019	10-32 NYLOC NUT	4
9	950078	3/8-24 x 1.25" GRADE 8 HEX BOLT	4
10	950012	3/8" SAE GRADE 8 ROUND WASHER	8
11	950050	3/8-24 STOVER LOCK NUT	4
	030017	CAMBURG 8.5" STICKERS	4



[12.26.23]

Recommended Torque Specs:

- OEM M18 uniball pivot bolts = 222 ft/lbs.
- OEM M18 axle mount bolts = 222 ft/lbs.
- All sway-bar mounting hardware = 35 ft/lbs.
- 10-32 screws = hand tight or 40-50 inch/lbs.

Due to the extreme and punishing nature of off-road use, Camburg Engineering products have no implied or expressed warranty. Camburg Engineering products and components are designed and manufactured for off-road use only. Always inspect your suspension after off-roading and at your routine service intervals. Use of products sold by Camburg Engineering is at the consumer's own risk. Proper installation and proper use of all products must be followed for optimal safety and performance. Camburg Engineering does not accept responsibility for improper use, alterations, lack of maintenance/inspection and installation of any products. Installing most suspension products will raise the center of gravity of the vehicle and can increase the susceptibility to a rollover and alter the handling characteristics. Camburg Engineering products may void the vehicles warranty, check with your local dealer. The loss of use of the product, loss of time, inconvenience, removal, shipping costs, commercial loss or consequential damages are not covered. Camburg Engineering reserves the right to change the design, material or specifications of any product without assuming any obligation to modify any product previously manufactured and without prior notice. Every effort has been made to avoid printing errors and specifications. By purchasing, installing and/or using these products you are accepting these stated conditions and accept all liability and responsibility.