



# INSTALLATION INSTRUCTIONS



2017+ CAN-AM MAVERICK X3 | PART NO. 8101201

## BILL OF MATERIALS:



- 1. CAT-BACK ASSY.
- 2. COVER PLATE
- 3. HEAT SHIELD



WEAR SAFETY GLASSES



READ INSTRUCTIONS THOROUGHLY BEFORE INSTALLING PRODUCT

## HARDWARE KIT:

- 1. [3] 1/4" Self Tapping Screws.
- 2. [1] MF Logo Plate
- 3. [2] Band Clamps (8mm)
- 4. [1] Inlet Heat-Shield
- 5. [8] No. 10 Self Tapping Screws
- 6. [2] Spark Arresters
- 7. [2] M6-1.00 6mm
- 8. [2] M8 Flat Washer
- 9. [2] 1/4" Split Lock Washer
- 10. [2] 6-1.0 Hex Bolts
- 11. [2] Vinyl Trim Guides

## MINIMUM REQUIRED TOOLS:



13mm



1/4", T-25  
8mm, 10mm, 13mm



Spring Puller  
(Or Pliers)



Cutting Device  
(Saw, Angle Grinder)

## **MAGNAFLOW RECOMMENDS PROFESSIONAL INSTALLATION ON ALL THEIR PRODUCTS**



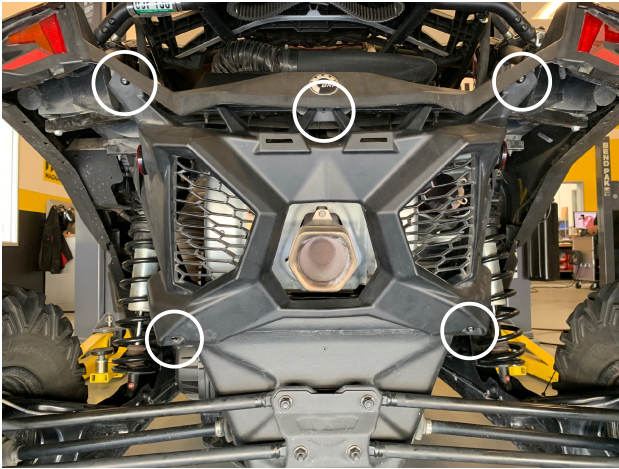
**WARNING:** When working on, under, or around any vehicle exercise caution. Please allow the vehicle's exhaust system to cool before removal, as exhaust system temperatures may cause severe burns. If working without a lift always consult vehicle manual for correct lifting specifications. Always wear safety glasses and ensure a safe work area. Serious injury or death could occur if safety measures are not followed.

**ATTENTION:** Always install any supplied band or U-bolt clamps to the proper torque specifications of 40-45 ft-lb for band clamps and 30-35 ft-lb for U-bolt clamps. Over tightening will result in the clamps breaking and will NOT be warranted by MagnaFlow.

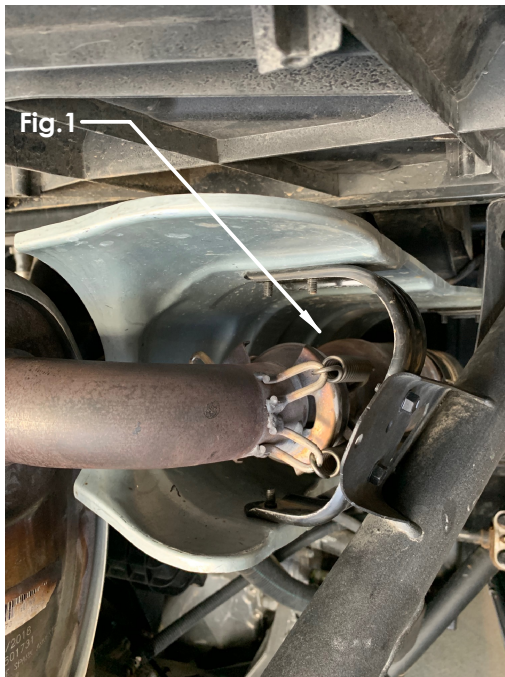
**MAGNAFLOW:** 1901 Corporate Centre Dr - Oceanside, CA 92056 | 1(800)990-0905  
**Technical Support:** 1(800) 959-9226 | Email: [moreinfo@magnaflow.com](mailto:moreinfo@magnaflow.com)

## INSTALLATION INSTRUCTIONS

### STOCK SYSTEM REMOVAL



**Step 1.** Unscrew all 5 T-25 torx screws to remove rear plastic fascia. Be sure to retain all mounting hardware as it will be needed to install your new MagnaFlow system.



**Step 2.** Using spring pullers or pliers, begin removing the OEM muffler by detaching the 4 springs (Fig. 1) that secure muffler inlet to headpipe.

Note: While not necessary, removing the 6 bolts holding the factory heatshield using a 10mm socket can make it easier to remove the springs.

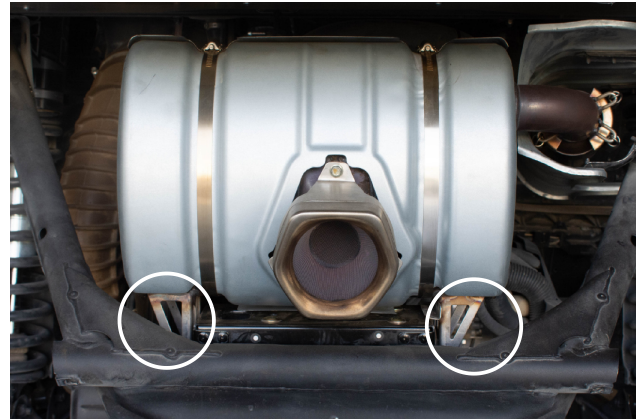


Fig. 2



**Step 3.** Remove the 4 mounting bolts (Fig. 2) from the OEM system using a 13mm socket and wrench. Carefully remove the stock muffler.



**Step 4.** Remove and inspect the donut gasket (Fig. 3) for wear. Replace if needed.

## INSTALLATION INSTRUCTIONS

### ALUMINUM HEATSHIELD INSTALLATION

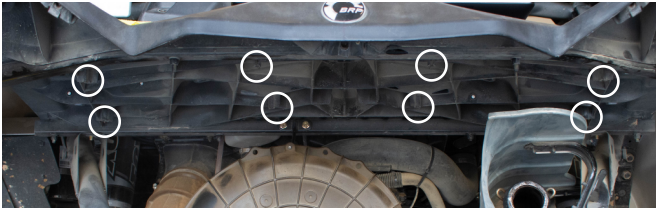


Fig. 4



**Step 1.** Use the 8 No. 10 self-tapping screws, attach the heatshield to the holes outlined in Fig. 4 using a T-25 Torx driver.

### MAGNAFLOW SYSTEM INSTALLATION



**Step 1.** Begin installing your MagnaFlow system by loosely bolting the muffler brackets to the stock mounting location using the 13mm bolts and nuts from Step 3. Be sure to retain aluminum spacer when mounting passenger side bracket.

**Note:** You will fully tighten these bolts in a later step.



**Step 2.** Use pliers or a spring-puller to reattach the four springs from the muffler to the inlet pipe.

**Note:** Similar to Step 2 removing the headpipe heatshield can make spring installation much easier.



**Step 3.** Align tips parallel to rear fascia and tighten the four 13 mm bolts shown in step 1.

## INSTALLATION INSTRUCTIONS

### INLET HEATSHIELD INSTALLATION



Fig. 5

**Step 1.** Locate the 2 band clamps and inlet heatshield from the hardware kit as seen in Fig. 5.



**Step 2.** Undo each band clamp and slide them into the brackets on the back side of the heatshield.



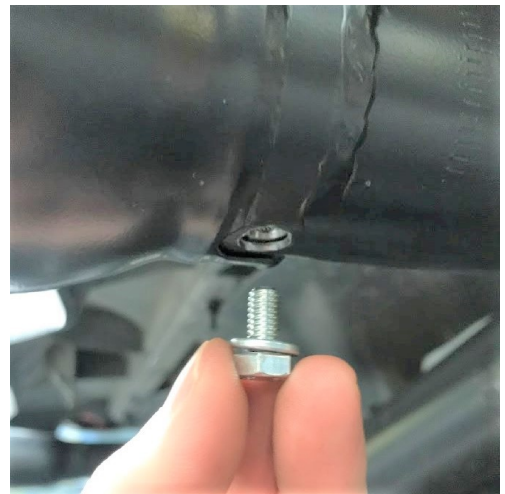
Fig. 6

**Step 3.** Carefully, slide the heatshield over the inlet pipe and position as seen in Fig. 6. Finish by tightening the band clamps with a flathead screwdriver or 8mm socket.

### SPARK ARRESTER INSTALLATION



**Step 1.** Locate the [2] spark arresters, [2] 10mm bolts, [2] 10mm nuts, [2] washers, and [2] lock washers for installation.



**Step 2.** Insert the spark arrester into the tip, lining up the two holes.



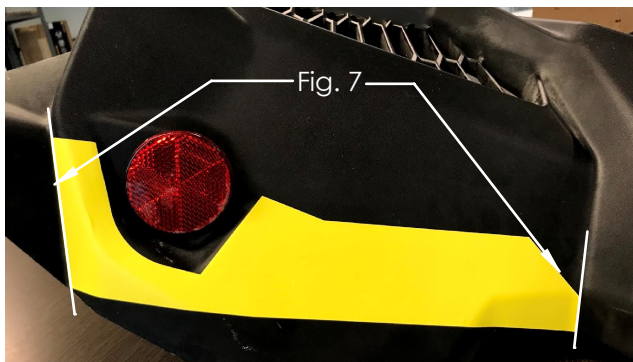
**Step 3.** Securely hold the nut and lock washer inside the tip with pliers while tightening the 10mm bolt.

## INSTALLATION INSTRUCTIONS



**Step 4.** Check that spark arrester is secured inside the tip and repeat for the other side.

### REAR FASCIA TRIM



**Step 1.** Place the included guide stickers on the side of the rear fascia by lining up the edges of the trim guide to the creases in the fascia that are highlighted by Fig. 7.

Note: Failing to trim fascia may result in plastic deformation on rear fascia



**Step 2.** Using a cutting tool (angle grinder, cutoff wheel, shears, etc.), trim the rear fascia along the edge of the guide (dotted line)



**Step 3.** After cutting, sand off the rough edges to desired finish. The fascia will sit flat on a table after trimming as seen above.

### MF COVER PLATE INSTALLATION



**Step 1.** Locate the [3] 1/4" self-tapping screws and the cover plate from the hardware kit.



**Step 2.** Carefully line up the top tab to the middle of the rear fascia (Fig. 8) and drill using a 1/4" socket self-tapping screw.

While not necessary, pre-drilling the top hole location with a 7/32 drill bit can make it easier to locate the screw.

## INSTALLATION INSTRUCTIONS



**Step 3.** With the top tab secured, screw in both bottom tabs with the remaining two screws.



**Step 4.** Check fitment



**Step 4.** Reinstall rear fascia using the 5 T-25 Torx bolts from earlier. Check final fitment and inspect all fasteners and springs.

After 25-50 miles of operation, re-inspect all fasteners and re-tighten if necessary.

**Congratulations! Your MagnaFlow exhaust installation is now complete. Thank you for choosing MagnaFlow.**