



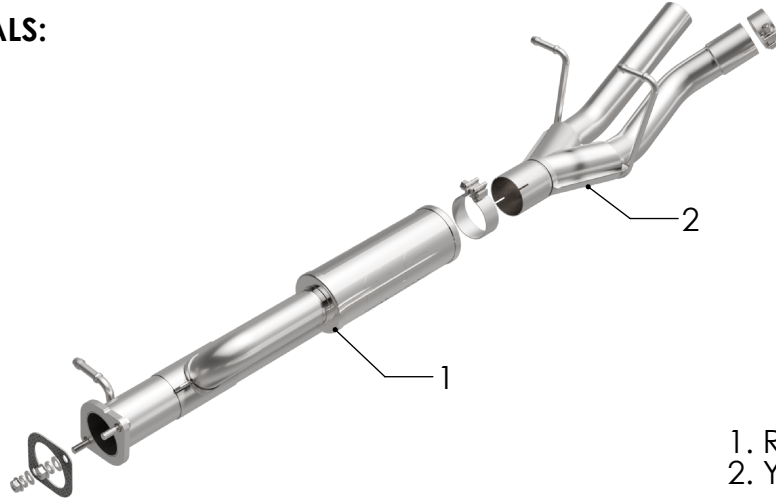
INSTALLATION INSTRUCTIONS



RAM 1500 L6 3.0L

PART NO. 19686

BILL OF MATERIALS:



- 1. RESONATOR ASSEMBLY
- 2. Y-PIPE ASSEMBLY



WEAR SAFETY GLASSES



READ INSTRUCTIONS THOROUGHLY BEFORE INSTALLING PRODUCT



SPRAY LUBRICANT

To ease removal of existing exhaust components (especially on older vehicles) spray penetrating lubricant on all fasteners and hangers/insulators that will be loosened or removed and let soak before disassembly.

HARDWARE KIT:

- 1.[1] 3.00" Band Clamp
- 2.[1] 2.50" Band Clamp
- 2.[2] 7/16-14 x 1.50" Bolt
- 3.[2] 7/16-14 Hex Nut
- 4.[2] 7/16 Lock Washer
- 5.[2] 7/16 Flat Washer

MINIMUM REQUIRED TOOLS:



15mm



Saw (or Other Cutting Tool)



Hanger Tool (Or Pry Bar)

MAGNAFLOW RECOMMENDS PROFESSIONAL INSTALLATION ON ALL THEIR PRODUCTS

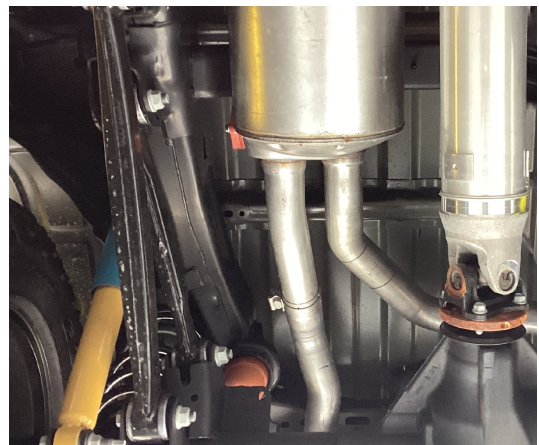


WARNING: When working on, under, or around any vehicle exercise caution. Please allow the vehicle's exhaust system to cool before removal, as exhaust system temperatures may cause severe burns. If working without a lift always consult vehicle manual for correct lifting specifications. Always wear safety glasses and ensure a safe work area. Serious injury or death could occur if safety measures are not followed.

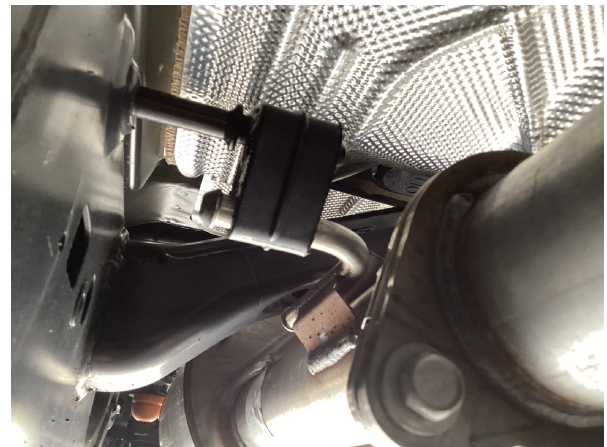
ATTENTION: Always install any supplied band or V-band clamps to the proper torque specifications of 40-45 ft-lbs for band clamps and 70 in-lbs for V-band clamps. Over tightening will result in the clamp breaking and will NOT be warranted by MagnaFlow.

MAGNAFLOW: 1901 Corporate Centre Dr - Oceanside, CA 92056 | 1(800)990-0905
Technical Support: 1(800) 959-9226 | Email: moreinfo@magnaflow.com

INSTALLATION INSTRUCTIONS

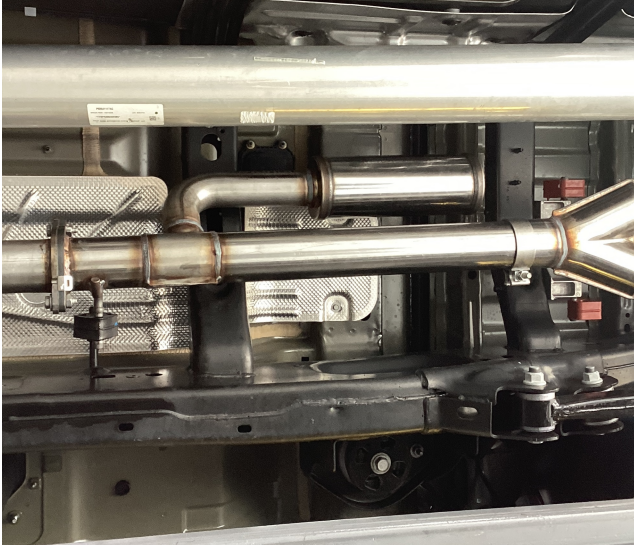


Step 1: To allow the removal of the OE Muffler Assembly the driver side outlet pipe must be cut. Begin by marking a cut point on the (D/S) outlet pipe 3.5" from the tangent of the second bend. Cut and deburr at this point.



Step 2: To remove the exhaust, disengage the inlet flange fasteners, passenger side pipe clamp (the clamp stays attached to the OE system) and extract the hangers from rubber insulators. Do not damage or discard rubber insulators as they will be reused in the installation of the new exhaust.

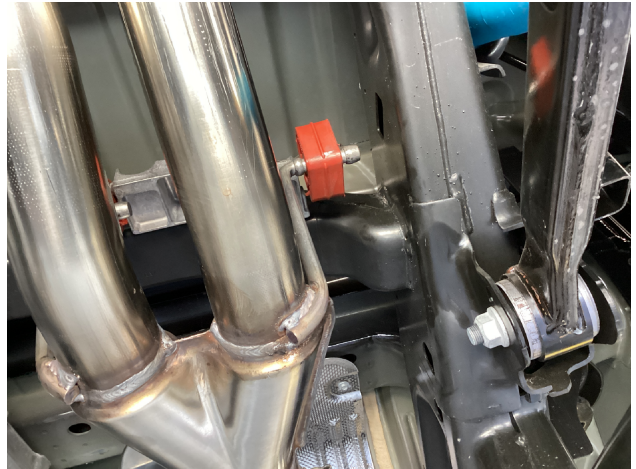
INSTALLATION INSTRUCTIONS



Step 3: Install new MagnaFlow System by loosely attaching the Resonator Assembly to the OE exhaust at the inlet flange location using the supplied fasteners and gasket.



Step 4: Next, install the Y-Pipe Assembly by sliding it onto the Resonator Assembly and inserting both outlets onto their respective tailpipes using the OE clamp on the Passenger Side and the supplied 2.50" Clamp on the cut Driver Side. The 3.00" supplied clamp is used on the inlet.



Step 5 Finish by inserting the hangers into the rubber insulators. Once a final position has been chosen for the new exhaust system, evenly tighten all clamps and bolts from front to rear. Inspect all fasteners after 25-50 miles for operation and re-tighten if necessary.