



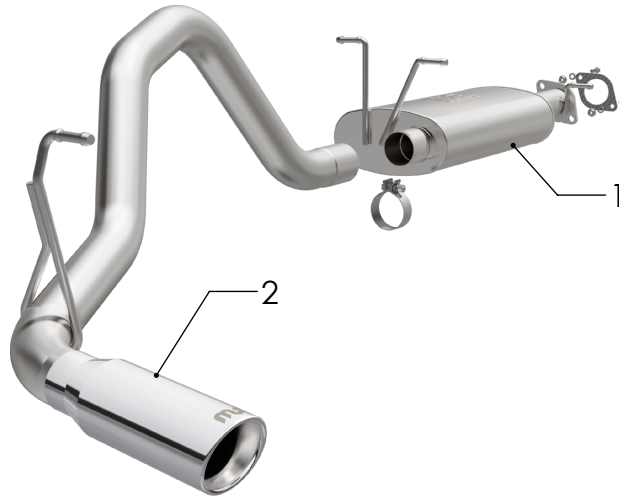
INSTALLATION INSTRUCTIONS



RAM 1500 3.6L

PART NO. 19683

BILL OF MATERIALS:



- 1. MUFFLER ASSEMBLY
- 2. TAIL PIPE ASSEMBLY



WEAR SAFETY GLASSES



READ INSTRUCTIONS THOROUGHLY BEFORE INSTALLING PRODUCT



SPRAY LUBRICANT

To ease removal of existing exhaust components (especially on older vehicles) spray penetrating lubricant on all fasteners and hangers/insulators that will be loosened or removed and let soak before disassembly.

HARDWARE KIT:

- 1.[1] 3.00" Clamp
- 2.[1] Gasket
- 3.[2] 7/16 Bolt
- 4.[2] 7/16 Nut
- 5.[2] 7/16 Lock Washer

MINIMUM REQUIRED TOOLS:



13mm, 15 mm



Hanger Tool (Or Pry Bar)

MAGNAFLOW RECOMMENDS PROFESSIONAL INSTALLATION ON ALL THEIR PRODUCTS



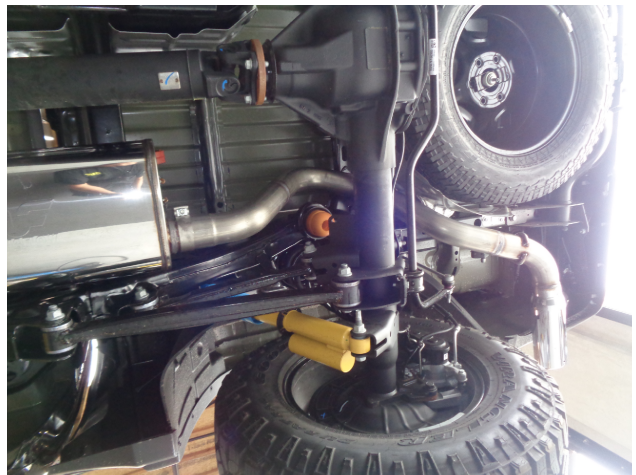
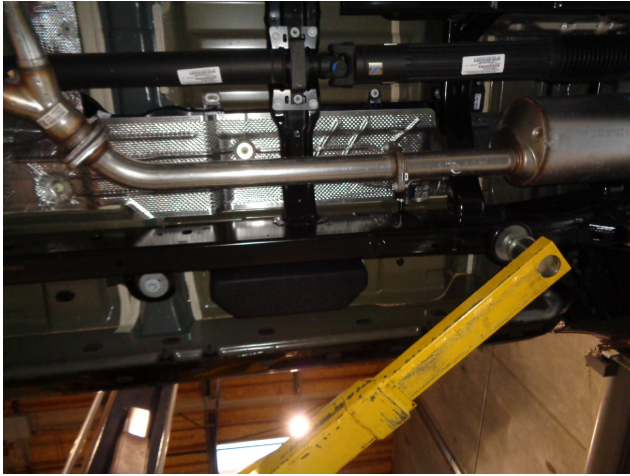
WARNING: When working on, under, or around any vehicle exercise caution. Please allow the vehicle's exhaust system to cool before removal, as exhaust system temperatures may cause severe burns. If working without a lift always consult vehicle manual for correct lifting specifications. Always wear safety glasses and ensure a safe work area. Serious injury or death could occur if safety measures are not followed.

ATTENTION: Always install any supplied band or U-bolt clamps to the proper torque specifications of 40-45 ft-lb for band clamps and 30-35 ft-lb for U-bolt clamps. Over tightening will result in the clamps breaking and will NOT be warranted by MagnaFlow.

MAGNAFLOW: 1901 Corporate Centre Dr - Oceanside, CA 92056 | 1(800)990-0905

Technical Support: 1(800) 959-9226 | Email: moreinfo@magnaflow.com

INSTALLATION INSTRUCTIONS



Step 1. To remove the OE exhaust system begin by unfastening the 2 bolt flange located in front of the muffler and loosening the clamp between the front and rear mufflers (over the rear axle) . Working front to rear disengage the hangers from the rubber insulators and remove the exhaust. Do not damage the rubber insulators as they will be used to install the new exhaust system.

Step 2. Begin installation of the MagnaFlow system by attaching the Muffler Assembly at the two bolt flange using the supplied fasteners. Next, attach the Tail Pipe Assembly using the supplied 3.00" clamp and engaging the hangers into the rubber insulators. (Leave all clamps and fasteners loose for final adjustment of the complete system.)



Step 3. Once a final position has been chosen for the new exhaust system, evenly tighten all clamps from front to rear using the torque specifications on page one of the instructions. Inspect all fasteners after 25-50 miles of operation and re-tighten if necessary.