



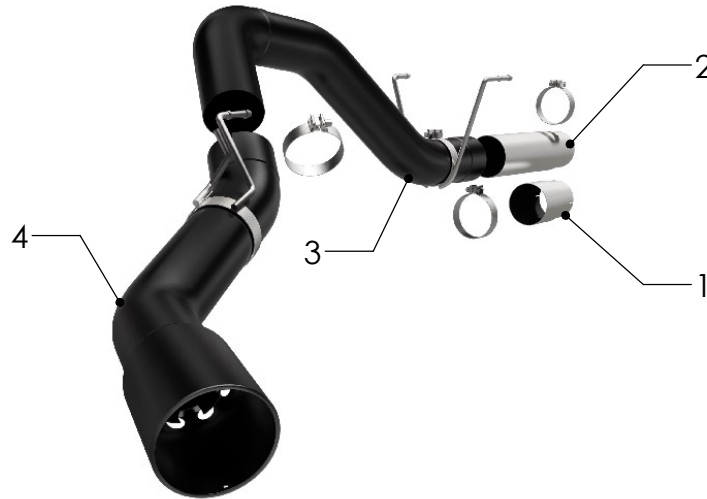
INSTALLATION INSTRUCTIONS



RAM CUMMINS 6.7L

PART NO. 17071

BILL OF MATERIALS:



- 1. EXTENSION PIPE
- 2. OVER AXLE PIPE
- 3. TAILPIPE ASSY



WEAR SAFETY
GLASSES



READ INSTRUCTIONS
THOROUGHLY BEFORE
INSTALLING PRODUCT



SPRAY LUBRICANT

To ease removal of existing exhaust components (especially on older vehicles) spray penetrating lubricant on all fasteners and hangers/insulators that will be loosened or removed and let soak before disassembly.

HARDWARE KIT:

- 1.[1] 4.50" Clamp
- 2.[2] 5.00" Clamp
- 3.[1] Front Hanger Clamp Assy
- 4.[1] Rear Hanger Clamp Assy

MINIMUM REQUIRED TOOLS:



13mm, 15 mm



Hanger Tool
(Or Pry Bar)

MAGNAFLOW RECOMMENDS PROFESSIONAL INSTALLATION ON ALL THEIR PRODUCTS

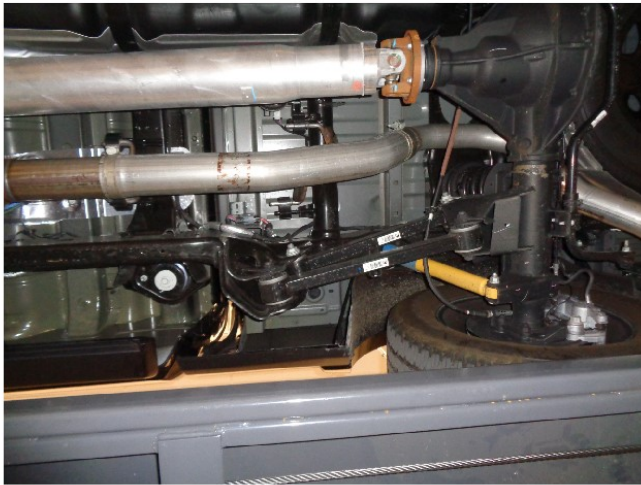


WARNING: When working on, under, or around any vehicle exercise caution. Please allow the vehicle's exhaust system to cool before removal, as exhaust system temperatures may cause severe burns. If working without a lift always consult vehicle manual for correct lifting specifications. Always wear safety glasses and ensure a safe work area. Serious injury or death could occur if safety measures are not followed.

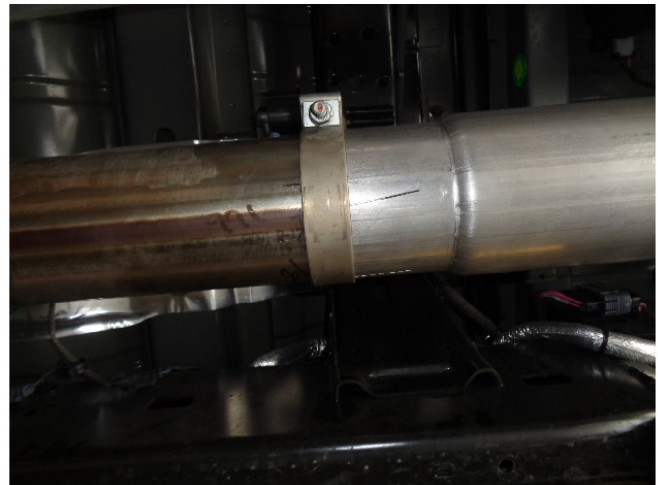
ATTENTION: Always install any supplied band or U-bolt clamps to the proper torque specifications of 40-45 ft-lb for band clamps and 30-35 ft-lb for U-bolt clamps. Over tightening will result in the clamps breaking and will NOT be warranted by MagnaFlow.

MAGNAFLOW: 1901 Corporate Centre Dr - Oceanside, CA 92056 | 1(800)990-0905
Technical Support: 1(800) 959-9226 | Email: moreinfo@magnaflow.com

INSTALLATION INSTRUCTIONS



Step 1. Remove the OE system by unclamping the OE Extension and Tail Pipes from the junction behind the DPF. Disengage the welded hangers from the rubber insulators, working rearward finish removing the system. Do not damage or discard the rubber insulators as they will be reused to mount the new system.



Step 2. Your vehicle configuration will determine which length of inlet pipe is used. See the table below for the cut point of the supplied extension pipe. The dimensions are the length of pipe you will need for your application. Begin installation of the MagnaFlow system by attaching the appropriate Inlet Pipe to the outlet of the DPF using the supplied 4.50" clamp.

VEHICLE CONFIGURATION	INLET PIPE
CREW CAB 6'4" BED	7.5"
MEGA CAB 6'4" BED	18"
CREW CAB 8' BED	27.5"



Step 3. Next, slide the Front Hanger Clamp Assy loosely onto the Over Axle Pipe Assy then attach Over Axle Pipe Assy to the Inlet Pipe using the supplied 5.00" Clamp. Engage the hangers into the rubber insulators. (Leave all clamp and fasteners loose for final adjustment of the complete system.)

INSTALLATION INSTRUCTIONS



Step 4. Complete the installation by sliding the Rear Hanger Clamp Assy onto the Tailpipe Assy and attaching the Tailpipe Assy to the Over Axle Pipe. Engage the hangers into OE rubber insulators.



Step 5. Once a final position has been chosen for the new exhaust system, evenly tighten all clamps and fasteners, from front to rear, using the torque specifications on page one of the instructions. Inspect all fasteners after 25-50 miles of operation and re-tighten if necessary.