

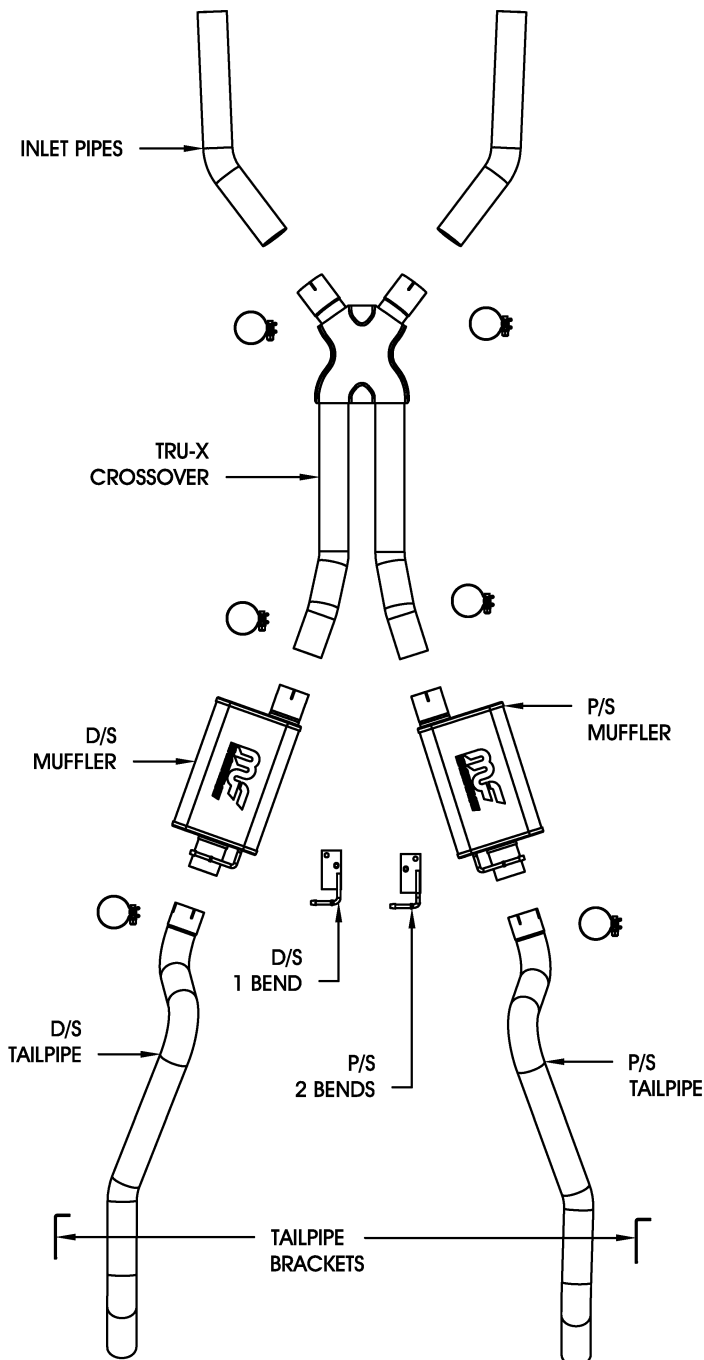
### 1970-1972 MOPAR E-BODY BARRACUDA/CHALLENGER - V8

*Note: This system is designed to work with OEM-style exhaust manifolds, or tubular headers. Due to the various applications possible, some modification and welding is required for a proper fit and finish.*

**Warning:** When working on, under, or around any vehicle exercise caution. Please allow the vehicle's exhaust system to cool before removal, as exhaust system temperatures may cause severe burns. If working without a lift, always consult vehicle manual for correct lifting specifications. Always wear safety glasses and ensure a safe work area. Serious injury or death could occur if safety measures are not followed.

**Step 1:** (Carefully read all instructions before installation) Disconnect the vehicle's battery before removal of the OEM exhaust. Remove the existing exhaust from the exhaust manifolds / headers. Some systems may need to be cut for removal. Take notice of axle position and brake line position before installing the new system.

**Step 2:** Begin installation of the new system by fitting the new mufflers, tailpipes and Tru-X crossover assembly into place for a mock-up fitment. This will help to determine where to drill the frame or floorboards for the muffler and tailpipe mounting brackets as shown in Diagrams 2 and 3 if the OEM mounting points won't work. Use a 5/16" drill bit for the tri-lobular sheet metal screws and the muffler mounting brackets. 7/16" bolts are supplied to mount the tailpipe brackets to the OEM frame nuts as shown in Diagram 4. You should now also be able to determine where to trim and/or modify the inlet extension pipes if needed. With the system loosely installed, adjust the components for at least 1/2" clearance including areas with moving parts (axle/driveshaft, etc.) Once a proper fit has been achieved using the supplied clamps, the inlet pipes can be welded to the manifold / header flanges. Once the tailpipe brackets are bolted into place as shown in Diagram 4, they can be bent as needed, then welded to the tailpipes.



\*MAGNAFLOW Performance Exhaust recommends professional installation on all their products

Technical support: 1-800-959-9226 ext. 4500

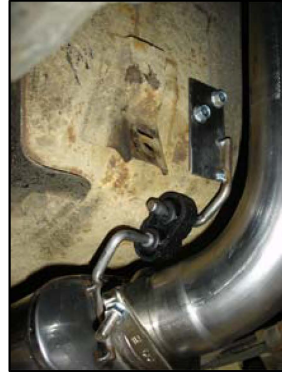
MAGNAFLOW Performance Exhaust - 22961 Arroyo Vista - Rancho Santa Margarita, CA 92688

### 1970-1972 MOPAR E-BODY BARRACUDA/CHALLENGER - V8

DIAGRAM 2  
DRIVER'S SIDE



DIAGRAM 3  
PASSENGER'S SIDE



*Note: This system is designed to work with OEM-style exhaust manifolds, or tubular headers. Due to the various applications possible, some modification and welding is required for a proper fit and finish.*

**Warning:** *When working on, under, or around any vehicle exercise caution. Please allow the vehicle's exhaust system to cool before removal, as exhaust system temperatures may cause severe burns. If working without a lift, always consult vehicle manual for correct lifting specifications. Always wear safety glasses and ensure a safe work area. Serious injury or death could occur if safety measures are not followed.*

**Step 3:** Once a final position has been chosen for the new system, evenly tighten all fasteners from front to rear. The supplied band clamps must be VERY tight to properly align the pipes and prevent leaks (Approximately 40ft-lbs). U-bolt clamps should be tightened to approximately 30-35ft-lbs. Inspect all fasteners after 25-50 miles of operation and retighten if necessary.

DIAGRAM 4



*\*MAGNAFLOW Performance Exhaust recommends professional installation on all their products*

Technical support: 1-800-959-9226 ext. 4500

MAGNAFLOW Performance Exhaust - 22961 Arroyo Vista - Rancho Santa Margarita, CA 92688