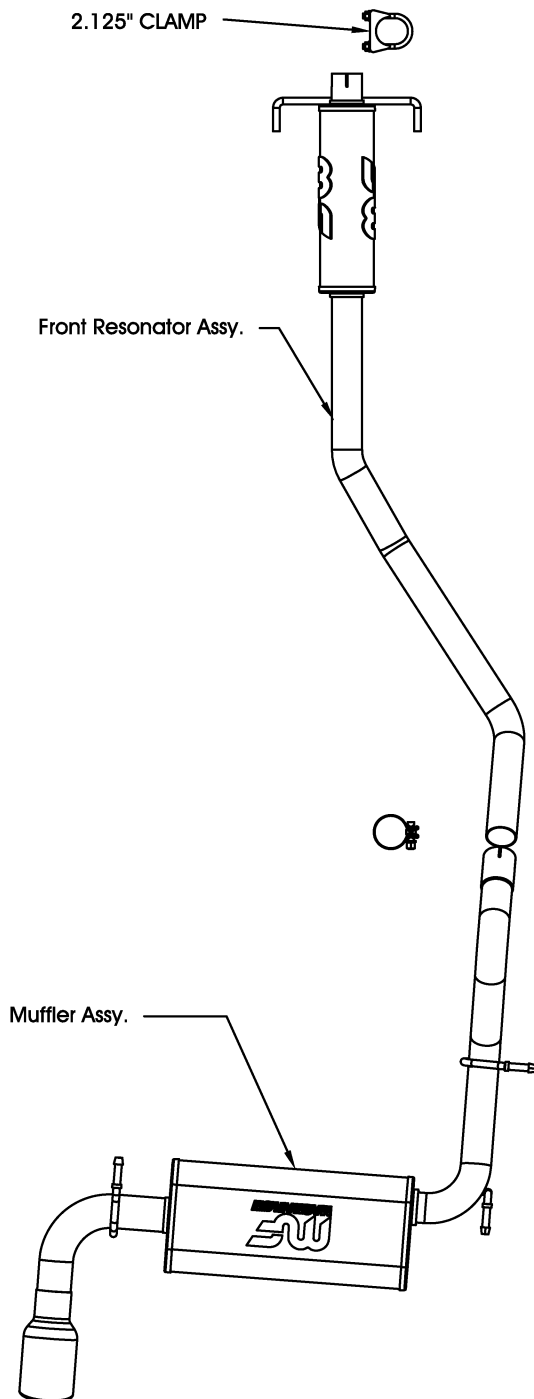


2003 TOYOTA MATRIX XR/XRS I-4 1.8L



Warning: When working on, under, or around any vehicle exercise caution. Please allow the vehicle's exhaust system to cool before removal, as exhaust system temperatures may cause severe burns. If working without a lift, always consult vehicle manual for correct lifting specifications. Always wear safety glasses and ensure a safe work area. Serious injury or death could occur if safety measures are not followed.

Step 1: (Carefully read all instructions before installation)

To remove the OEM exhaust system, cutting is required. Starting from the OEM muffler assembly, unbolt the system and lay it to the side. Be sure to not remove the OEM insulators and hardware as they may be used to put on the new system. As follows, unbolt the chassis brace that is below the OEM front pipe, to remove the OEM front pipe. Locate the OEM Resonator Assy. (See Figure 1-1) and carefully cut the OEM Resonator Assy. just before the weld. (See Figure 1-2) Remove the cut OEM Assy. (See Figure 1-3)

Step 2: Install the Magnaflow Exhaust system, starting at the Front Resonator Assy. working back to the rear of the vehicle. Slip the 2.125" Clamp over the OEM pipe. Slide the Front Resonator Assy. over the OEM exhaust pipe and install the hangers in the OEM insulators. Next, install the Muffler Assy hangers into the OEM insulators and use supplied clamp to assemble the Front Resonator to the Muffler Assy.

Step 3: With all components mounted loosely, adjust the system for overall aesthetics and clearance of frame & bodywork. (MAGNAFLOW recommends at least 1/2" of clearance between the exhaust system and any body panels to prevent heat-related body damage or fire.)

Step 4: Once a final position has been chosen for the new system, evenly tighten all fasteners from front to rear. The supplied band clamps must be VERY tight to properly align the pipes and prevent leaks (Approximately 40ft-lbs). U-bolt clamps should be tightened to approximately 30-35ft-lbs. Inspect all fasteners after 25-50 miles of operation and retighten if necessary.

*MAGNAFLOW Performance Exhaust recommends professional installation on all their products

Technical support: 1-800-959-9226 ext. 4500

2003 TOYOTA MATRIX XR 1.8L

Warning: When working on, under, or around any vehicle exercise caution. Please allow the vehicle's exhaust system to cool before removal, as exhaust system temperatures may cause severe burns. If working without a lift, always consult vehicle manual for correct lifting specifications. Always wear safety glasses and ensure a safe work area. Serious injury or death could occur if safety measures are not followed.



Figure 1-1



Figure 1-2

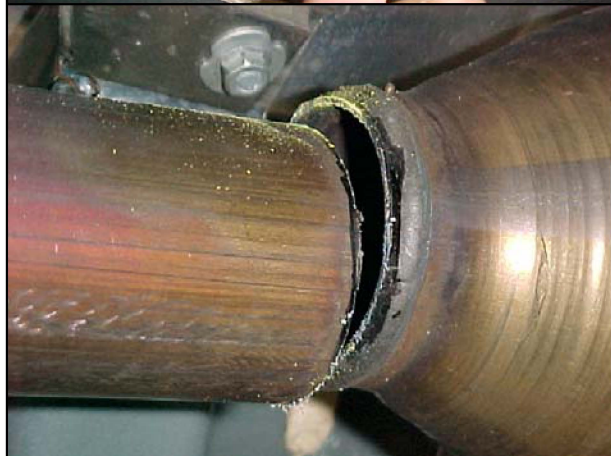


Figure 1-3

**MAGNAFLOW Performance Exhaust recommends professional installation on all their products*

Technical support: 1-800-959-9226 ext. 4500