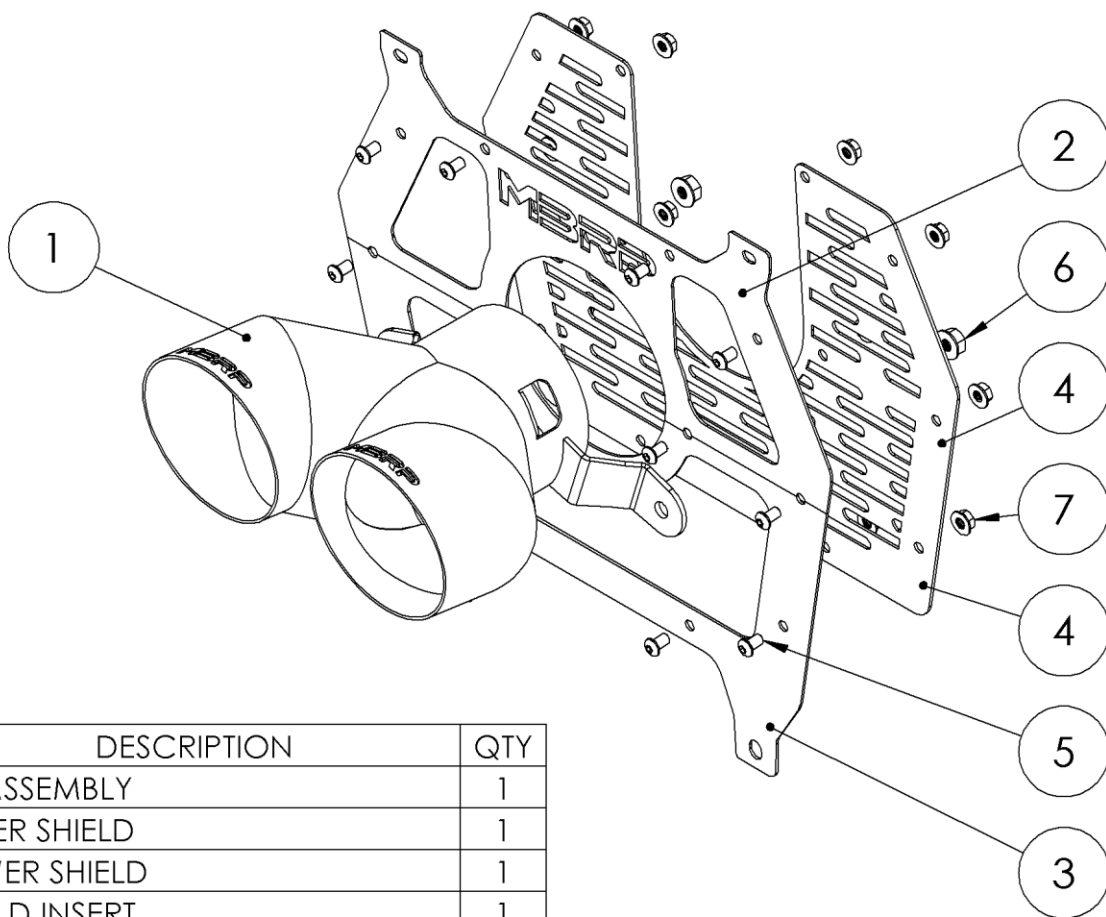


T85329

2024-UP CAN-AM MAVERICK R, TIP, DUAL 4"

MBRP®



ITEM	DESCRIPTION	QTY
1	TIP ASSEMBLY	1
2	UPPER SHIELD	1
3	LOWER SHIELD	1
4	SHIELD INSERT	1
5	M6X10 BUTTON HEAD SCREW	12
6	M8X1.25 FLANGE NUT	2
7	M6X1.0 FLANGE NUT	12

Refer to this LOT NUMBER when contacting customer service: _____

PLEASE READ BEFORE STARTING INSTALLATION

While MBRP has made every effort to ensure that all components of this system are of superior quality and properly packaged, it is the installer's responsibility to ensure the following before removal of the factory exhaust:

- that ALL components shown above are present.
- that ALL mating components fit together.
- that there are no damaged components.
- that the system you have purchased is appropriate for your vehicle year, model and configuration.
- that the system will not interfere with any modifications previously installed or planned.
- that you have read and understand these instructions.

If you have any questions or are uncertain about any aspect of the installation of this system to your vehicle please contact your dealer before commencing installation.

Installation



Figure 1



Figure 2

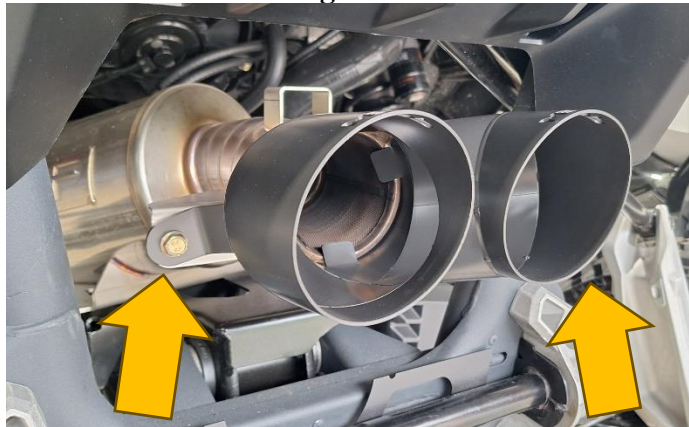


Figure 3



Figure 4

1. Remove the OEM tip assembly. Retain the 3 bolts and the OEM spark arrestor screen as these will be reused.
Refer to Figure 1.
2. Remove the plastic sway bar pivot cover and install the **Lower Shield** behind the sway bar. Drop the **Lower Shield** down out of the way to allow for installation of the **Tip Assembly**.
Refer to Figure 2.
3. Re-install the OEM spark arrestor before installing the **Tip Assembly** using 2 of the 3 previously removed bolts and 2 **M8x1.25 Flange Nuts**.
Refer to Figure 3.
4. Loosely install the **Shield Insert** behind the **Lower Shield**.
Refer to Figures 4 and 5.

MBRP

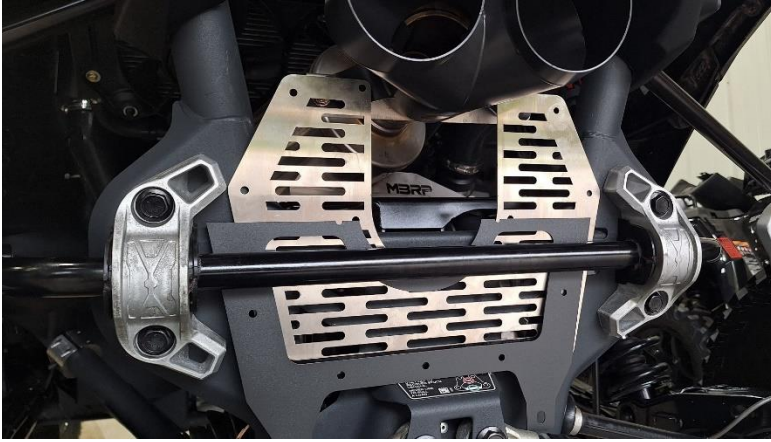


Figure 5

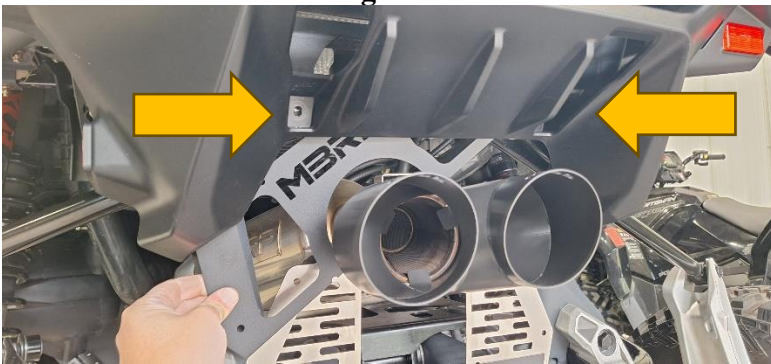


Figure 6



Figure 7



Figure 8

5. Remove the 2 upper trim screws and install the **Upper Shield** between the chassis and plastic trim. Loosely secure the **Upper Shield** in place by reinstalling the 2 trim screws. **Refer to Figures 6 and 7.**
6. Raise the **Shield Insert and Lower Shield** up into position and assemble them together with the Upper Shield using **M6x10 Button Head Screws** and **M6x1.0 Flange Nuts**. **Refer to Figure 8.**

MBRP



Figure 9

7. Re-install the plastic sway bar pivot securing the **Lower Shield** in place, followed by the 2 upper trims screws securing the **Upper Shield**. Tighten all screws.
Refer to Figure 9.

Congratulations! You are ready to begin experiencing the improved performance and driving pleasure of your **MBRP** performance exhaust system. We know you will enjoy your purchase.