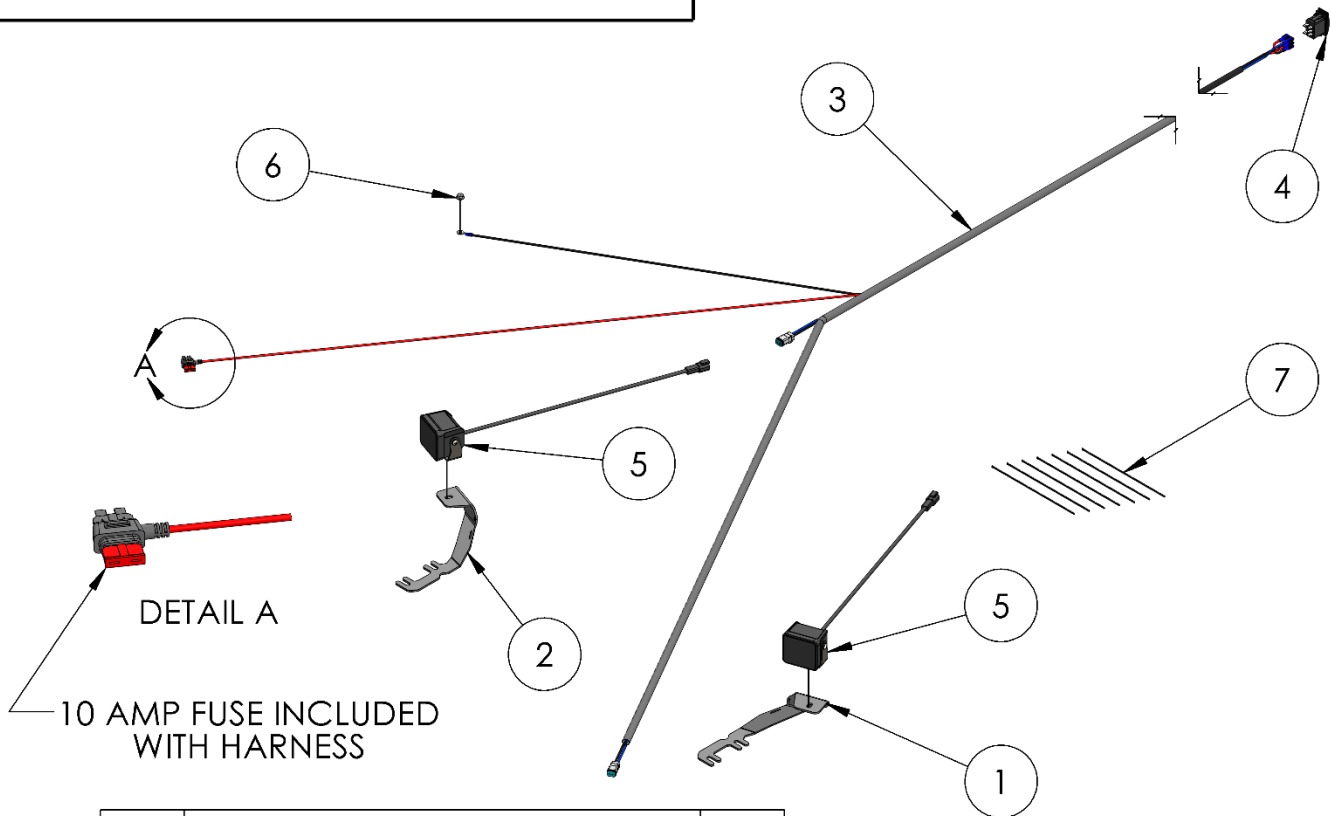


# SL5269-02

2024-UP FORD RANGER,  
DITCH LIGHT KIT

# MBRP®



ITEM	DESCRIPTION	QTY
1	DRIVER LIGHT BRACKET	1
2	PASSENGER LIGHT BRACKET	1
3	WIRING HARNESS	1
4	SWITCH	1
5	LIGHT ASSEMBLY	2
6	M6x1.0 FLANGE NUT	1
7	8" CABLE TIE	7

Refer to this LOT NUMBER when contacting customer service: \_\_\_\_\_

## PLEASE READ BEFORE STARTING INSTALLATION

**While MBRP has made every effort to ensure that all components of this system are of superior quality and properly packaged, it is the installer's responsibility to ensure the following:**

- that ALL components shown above are present.
- that ALL mating components fit together.
- that there are no damaged components.
- that the system you have purchased is appropriate for your vehicle year, model and configuration.
- that the system will not interfere with any modifications previously installed or planned.
- that you have read and understand these instructions.

If you have any questions or are uncertain about any aspect of the installation of this system to your vehicle please contact your dealer before commencing installation.

## GET READY TO SHINE BRIGHTER!

1. Use tape or a pen to mark both of the hood hinge positions on the hood prior to beginning the installation.
2. Apply tape or stretch wrap over the edges of the hood where the light brackets will be installed to protect paint during the installation.

### COMPLETE BRACKET INSTALLATION ON ONE SIDE AT A TIME

3. Loosen the hood hinge nuts enough to slide the **Passenger Light Bracket** in place between the nuts and hood hinge. Disengage the washer hose retaining clip if equipped. Do not install the light brackets between the hood and hood hinge, doing so will lift the hood.

Refer to Figure 1 and 2.

4. Tighten the hood hinge nuts and position the hinge in-line with the previously marked indicators. Replace the washer hose retaining clip. **Ensure the light bracket is installed in a position where it will not contact the hood.**

Refer to Figure 1 and 2.

5. Install the **Light Assembly** on the light bracket. Route the wire and connectors from the **Light Assembly** around the light bracket and around the backside of the hood hinge. **Ensure the routing does not interfere with the hood hinge.** Secure with **Cable Ties** where shown.

Refer to Figure 3.

### REPEAT STEPS 3-5 ON OPPOSITE SIDE OF VEHICLE

6. Route the **Wiring Harness** from the fuse box, along the firewall, following the factory harness where possible. Secure the **Wiring Harness** and **Light Assembly** wires with **Cable Ties** where required. Mate the connectors from the **Light Assemblies** to the **Wiring Harness**.

Refer to Figure 3.



Figure 1



Figure 2



Figure 3

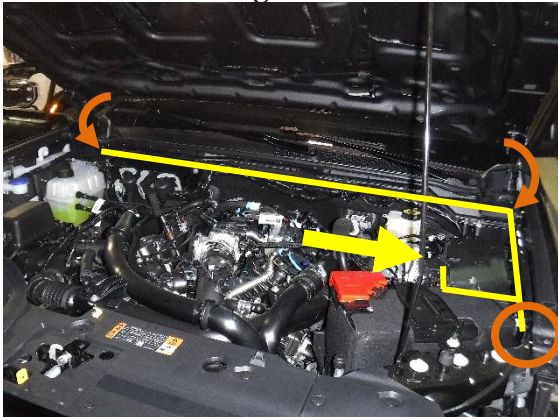


Figure 4



Figure 5

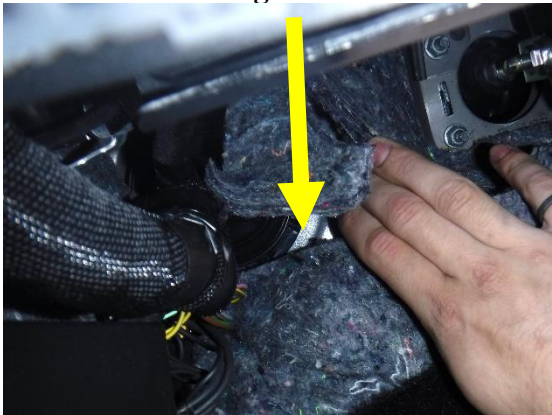


Figure 6

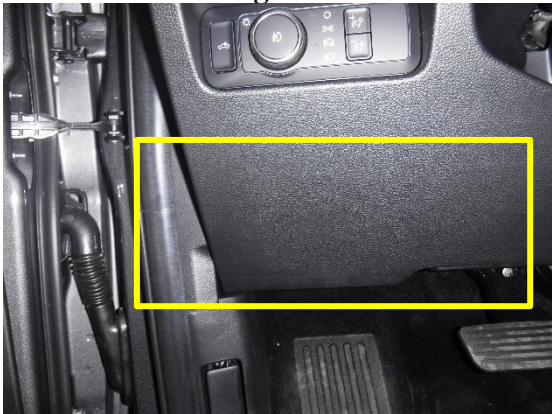


Figure 7

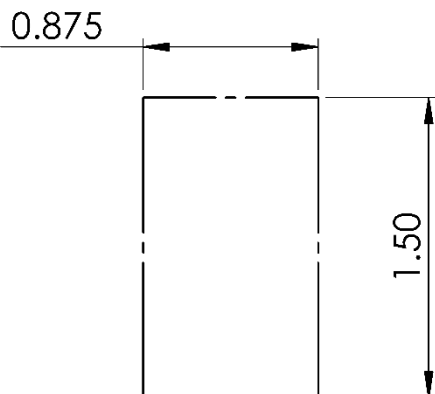
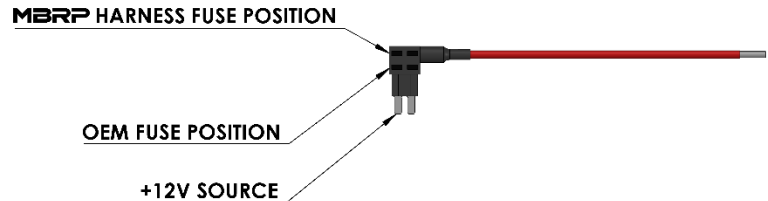


Figure 8

7. Route the fuse tap from the **Wiring Harness** around to the inside of the fuse box. Install the fuse tap in a fuse position with switched ignition power, with an OEM fuse rated higher than 15A. **The backlights on the Switch should not be illuminated when accessory power is turned off.** Refer to vehicle manual for fuse identification.



Be sure to install the fuse tap in the correct orientation, remove the chosen OEM fuse from the fuse box and test both contacts for power. It is recommended to use a test light for this process. Install the OEM fuse in the lower position of the fuse tap, then install the fuse tap with the +12V source in the powered contact. Disconnect the negative battery cable when the fuse tap is in place.

Refer to Figure 3 and 4.

8. Secure the ground wire ring terminal to the ground stud on the driver-side fender using supplied **M6 Flange Nut**.

Refer to Figure 3 and 4.

9. Cut or drill a small hole in the plug on the firewall for the **Wiring Harness** to pass through to the inside of the vehicle. Route the **Wiring Harness** through the plug in the firewall, around the insulation, and to the desired location inside of the vehicle. Take care not to damage the spade terminals attached to the harness. Using a guide wire can help with the installation.

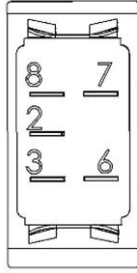
Refer to Figure 5 and 6.

10. Choose a location to mount the **Switch**. There is 8 feet of wire to run the **Wiring Harness** to your desired **Switch** mounting location inside of the vehicle. The recommended mounting location is on the lower kick panel. Using the supplied template, mark and cut a 1.5" x 7/8" hole for the **Switch**. Alternatively, secure the **Switch** in a safe location. **Ensure there is adequate backside clearance to both push the switch through the hole, and to attach the Wiring Harness connectors before making any cuts.**

Refer to Figure 7 and 8.



PIN	COLOR
2	RED
3	BLUE
6	RED
7	BLACK
8	BLACK



**Figure 9**

**11.** Connect the **Wiring Harness** spade terminals to the **Switch** following the wiring color and pin assignments. Push the **Switch** into the hole cut at step 8.

**Refer to Figure 9 and 10.**

**12.** Secure all parts of the **Wiring Harness** using **Cable Ties**. Ensure adequate clearance to all moving, sharp and hot components is maintained. Reconnect the negative battery cable and adjust the **Light Assemblies** to the desired position.



**Figure 10**



**Congratulations!** You are ready to begin experiencing the improved performance and illumination pleasure of your **MBRP** performance ditch light kit. We know you will enjoy your purchase.