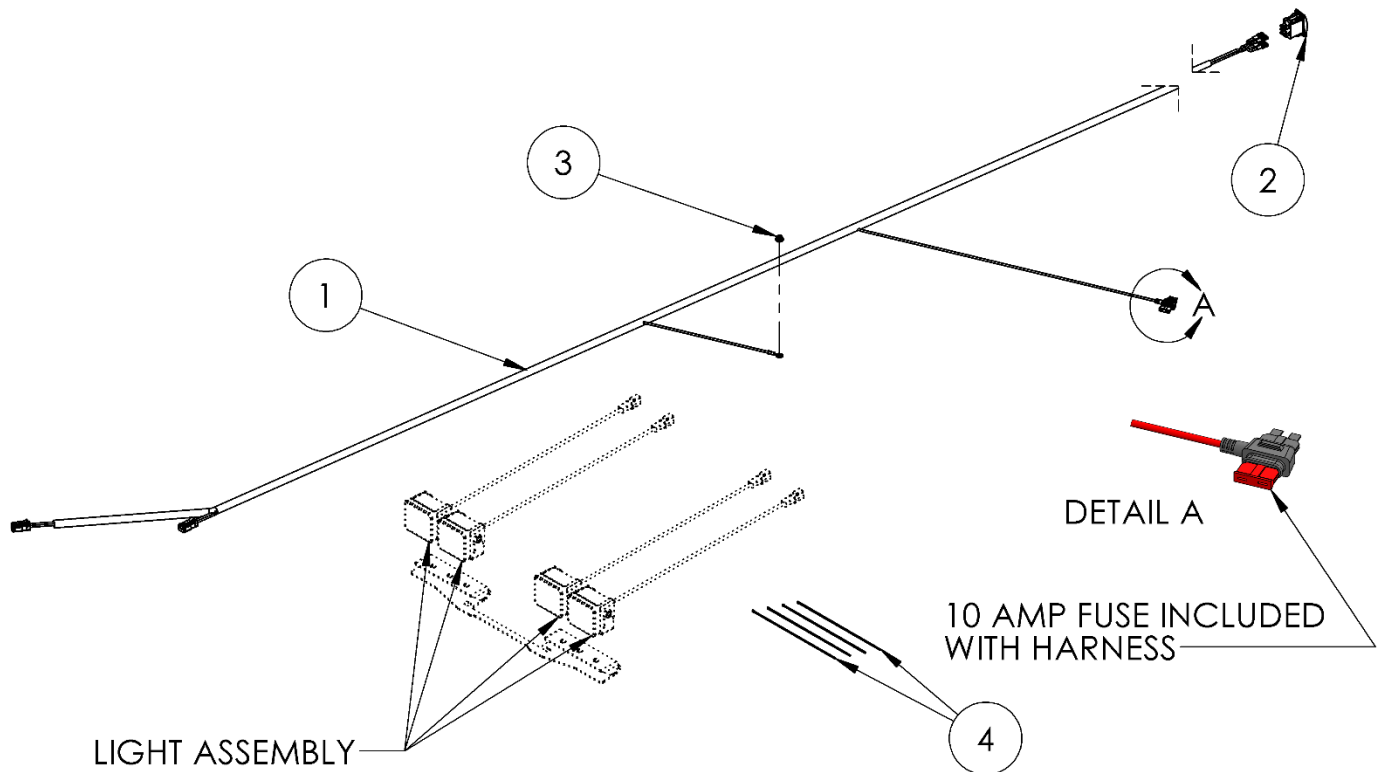


# SL5269-01W

2024-UP FORD RANGER,  
BUMPER LIGHT HARNESS KIT

# MBRP®

THIS KIT IS INTENDED TO ADD TWO ADDITIONAL LIGHT ASSEMBLIES TO SL5269-01 BUMPER LIGHT KITS



LIGHT ASSEMBLY

EITHER: SL65200, SL65201, SL65200-01, OR SL65201-01

ITEM	DESCRIPTION	QTY
1	WIRING HARNESS	1
2	SWITCH	1
3	M6x1.0 FLANGE NUT	1
4	8" CABLE TIE	4

Refer to this LOT NUMBER when contacting customer service: \_\_\_\_\_

## PLEASE READ BEFORE STARTING INSTALLATION

While MBRP has made every effort to ensure that all components of this system are of superior quality and properly packaged, it is the installer's responsibility to ensure the following:

- that ALL components shown above are present.
- that ALL mating components fit together.
- that there are no damaged components.
- that the system you have purchased is appropriate for your vehicle year, model and configuration.
- that the system will not interfere with any modifications previously installed or planned.
- that you have read and understand these instructions.

If you have any questions or are uncertain about any aspect of the installation of this system to your vehicle please contact your dealer before commencing installation.

## GET READY TO SHINE BRIGHTER!

### TRIMMING OF THE PLASTIC BUMPER VALANCE MAY BE REQUIRED TO FIT SOME VEHICLES

1. Mount then assemble the desired light assembly combination onto the **Bumper Bracket** prior to installing on vehicle. If vehicle is equipped with an engine block heater, the plug will need to be relocated to use the outside passenger-side mounting position on the bracket.

Refer to Figure 1.

### VEHICLES EQUIPPED WITH ADAPTIVE CRUISE CONTROL MAY NEED TO REMOVE BUMPER VALANCE FOR INSTALLATION

2. Remove the plastic rivets and bolts securing the bumper valance. Remove the two bolts securing the bottom of the license plate bracket if equipped. Retain all hardware for installation.

Refer to Figure 2.

3. Gently pull the bumper valance to disengage retaining clips. Disconnect the front distance sensor connector to remove the valance from vehicle, if equipped. Set aside the valance and all hardware, retaining for installation.

4. Remove the two bolts securing the adaptive cruise control sensor bracket to the bumper structure, retain for installation.

Refer to Figure 3.

5. Route the **Wiring Harness** from the fuse box, down between the driver side headlight and front vehicle structure, pulling through near the driver side tow hook position and back up into the bumper valance opening. Using a guide wire can help with the installation. Secure the **Wiring Harness** with Cable Ties where required. Disengage the retaining clip for the distance sensor connector if required to route the **Wiring Harness** into the bumper opening. Mate the connectors from the **Light Assemblies** to the **Wiring Harness**.

Refer to Figure 4.



Figure 1



Figure 2



Figure 3

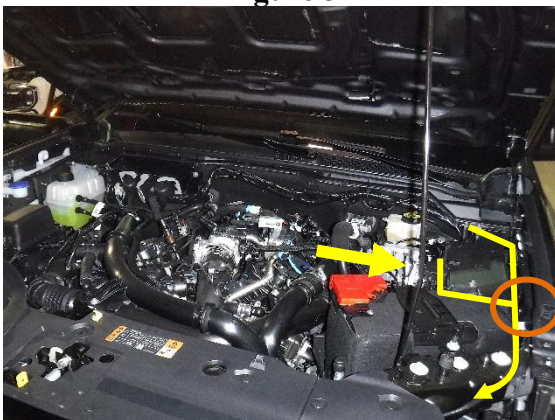


Figure 4



Figure 5

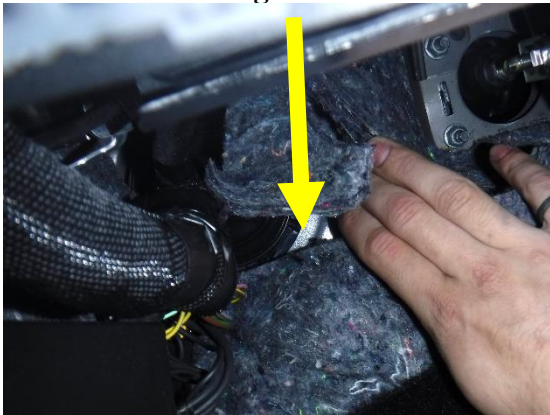


Figure 6

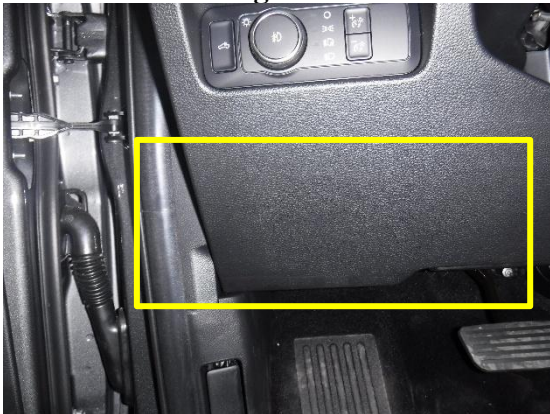


Figure 7

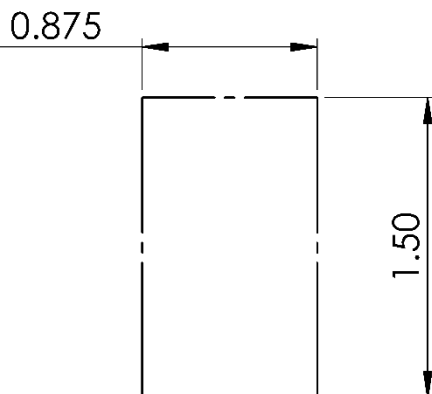
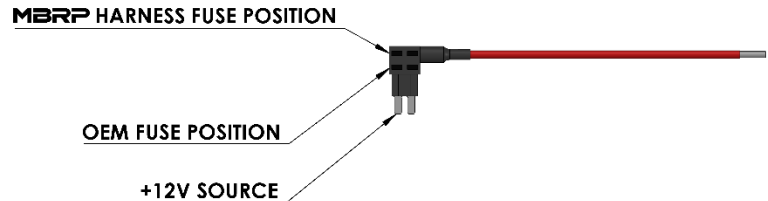


Figure 8

6. Route the fuse tap from the **Wiring Harness** around to the inside of the fuse box. Install the fuse tap in a fuse position with switched ignition power, with an OEM fuse rated higher than 15A. **The backlights on the Switch should not be illuminated when accessory power is turned off.** Refer to vehicle manual for fuse identification.



Be sure to install the fuse tap in the correct orientation, remove the chosen OEM fuse from the fuse box and test both contacts for power. It is recommended to use a test light for this process. Install the OEM fuse in the lower position of the fuse tap, then install the fuse tap with the +12V source in the powered contact. Disconnect the negative battery cable when the fuse tap is in place.

**Refer to Figure 4.**

7. Secure the ground wire ring terminal to the ground stud on the driver-side fender using supplied **M6 Flange Nut**.

**Refer to Figure 4.**

8. Cut or drill a small hole in the plug on the firewall for the **Wiring Harness** to pass through to the inside of the vehicle. Route the **Wiring Harness** through the plug in the firewall, around the insulation, and to the desired location inside of the vehicle. Take care not to damage the spade terminals attached to the harness. Using a guide wire can help with the installation.

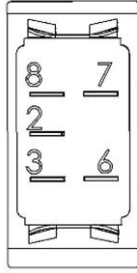
**Refer to Figure 5 and 6.**

9. Choose a location to mount the **Switch**. There is 8 feet of wire to run the **Wiring Harness** to your desired **Switch** mounting location inside of the vehicle. The recommended mounting location is on the lower kick panel. Using the supplied template, mark and cut a 1.5" x 7/8" hole for the **Switch**. Alternatively, secure the **Switch** in a safe location. **Ensure there is adequate backside clearance to both push the switch through the hole, and to attach the Wiring Harness connectors before making any cuts.**

**Refer to Figure 7 and 8.**



PIN	COLOR
2	RED
3	BLUE
6	RED
7	BLACK
8	BLACK



**Figure 9**

**10.** Connect the **Wiring Harness** spade terminals to the **Switch** following the wiring color and pin assignments. Push the **Switch** into the hole cut at step 10.

**Refer to Figure 9 and 10.**

**11.** Install **Bumper Bracket** with light pods fitted on top of OEM sensor bracket using the retained bolts. If vehicle is not equipped with adaptive cruise control, use supplied **Hex Bolts** and **Flat Washers**

**Refer to Figure 3.**

**12.** Secure all parts of the **Wiring Harness** using **Cable Ties**. Ensure adequate clearance to all moving, sharp and hot components is maintained. Reconnect the negative battery cable and test for functionality.

**13.** Reinstall the OEM front bumper valance if removed, starting by re-connecting distance sensor connector and reversing steps 2 through 4 above. Adjust the **Light Assemblies** to the desired position.

**Refer to Figure 11.**



**Figure 10**



**Figure 11**



**Congratulations!** You are ready to begin experiencing the improved performance of your **MBRP** performance bumper light kit. We know you will enjoy your purchase.