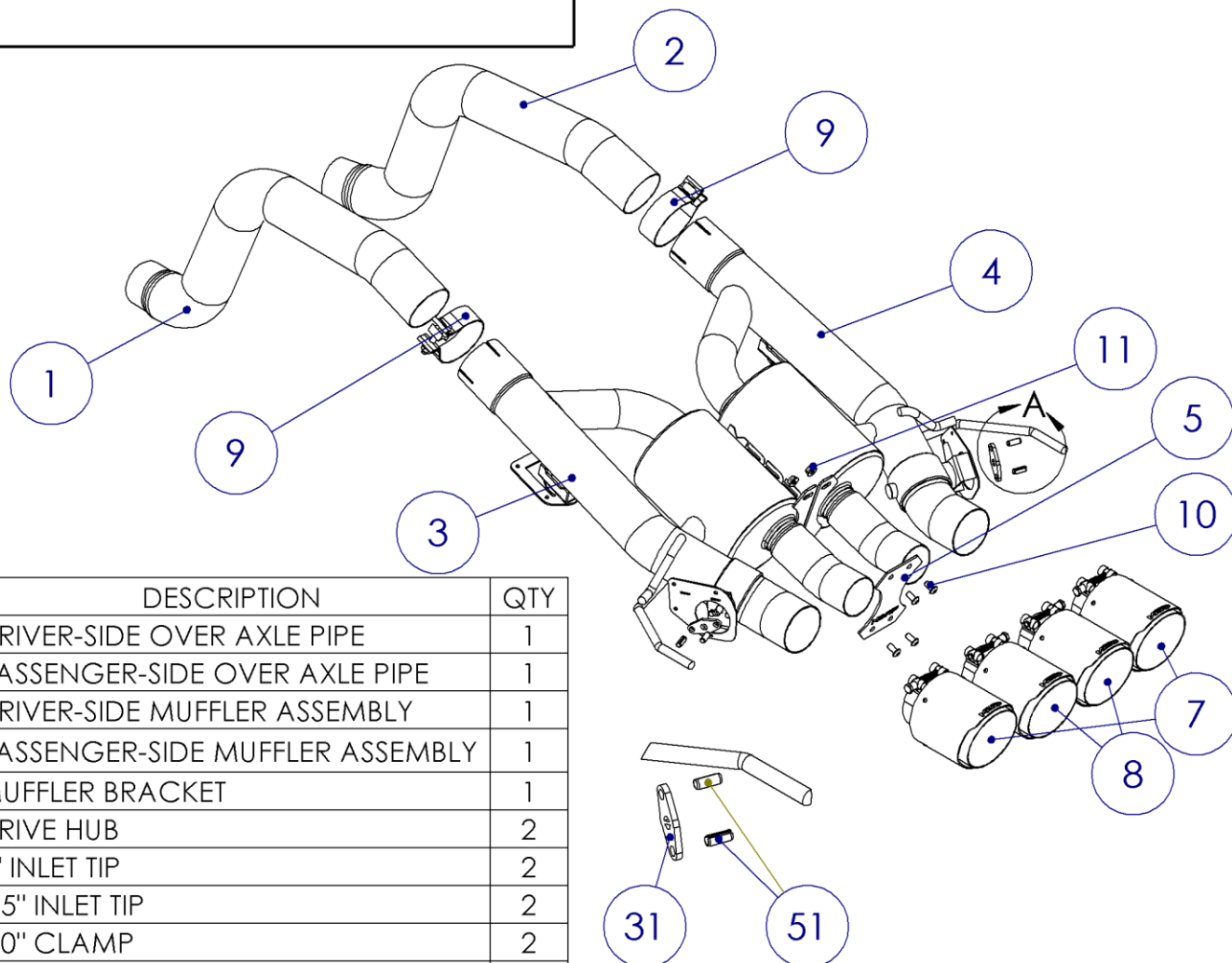


S7007

2014-2019 CHEVROLET CORVETTE, 6.2L,
ACTIVE AXLE BACK

MBRP®



ITEM	DESCRIPTION	QTY
1	DRIVER-SIDE OVER AXLE PIPE	1
2	PASSENGER-SIDE OVER AXLE PIPE	1
3	DRIVER-SIDE MUFFLER ASSEMBLY	1
4	PASSENGER-SIDE MUFFLER ASSEMBLY	1
5	MUFFLER BRACKET	1
6	DRIVE HUB	2
7	3" INLET TIP	2
8	2.5" INLET TIP	2
9	3.0" CLAMP	2
10	M8X16 SCREW	4
11	M8X1.25 FLANGE NUT	4
12	SPRING PIN	4

DETAIL A
SCALE 1 : 5

Refer to this LOT NUMBER when contacting customer service: _____

PLEASE READ BEFORE STARTING INSTALLATION

While MBRP has made every effort to ensure that all components of this system are of superior quality and properly packaged, it is the installer's responsibility to ensure the following before removal of the factory exhaust:

- that ALL components shown above are present.
- that ALL mating components fit together.
- that there are no damaged components.
- that the system you have purchased is appropriate for your vehicle year, model and configuration.
- that the system will not interfere with any modifications previously installed or planned.
- that you have read and understand these instructions.

If you have any questions or are uncertain about any aspect of the installation of this system to your vehicle please contact your dealer before commencing installation.



Figure 1



Figure 2



Figure 3

Removal of Stock System

1. The lower fascia needs to be removed. Remove the ten bolts that secure the bottom corners of the lower fascia (5 per side).

Refer to Figure 1.

2. Remove the two bolts above the tip location.

Refer to Figure 2.

3. Remove the two bolts located behind the license plate.

Refer to Figure 3.

4. Remove the two lower mesh inserts on each side of the lower fascia. Each one is snapped in place using six tabs, they can be pushed out from the inside of the fascia.

Refer to Figure 4.

5. Remove the two reflective lenses. Each reflector is snapped in place using three tabs, which can be pushed out from inside the fascia. Behind each of them there is an additional two bolts.

Refer to Figure 4.

6. Unsnap each lower rear corner of the rear fascia by pushing the end of the tab inwards while pushing the rear fascia up and then backwards.

Refer to Figure 5.

7. Unplug the wiring from all exhaust valve actuators.

8. The shift cable arm **MUST** be removed on automatic transmission equipped cars to allow for removal and installation of the driver side exhaust.

Refer to Figure 6.

9. Loosen the band clamps located just forward of the rear axle. The band clamps will be reused for your new exhaust. Remove the two bolts holding the OE mufflers together.

MBRP®

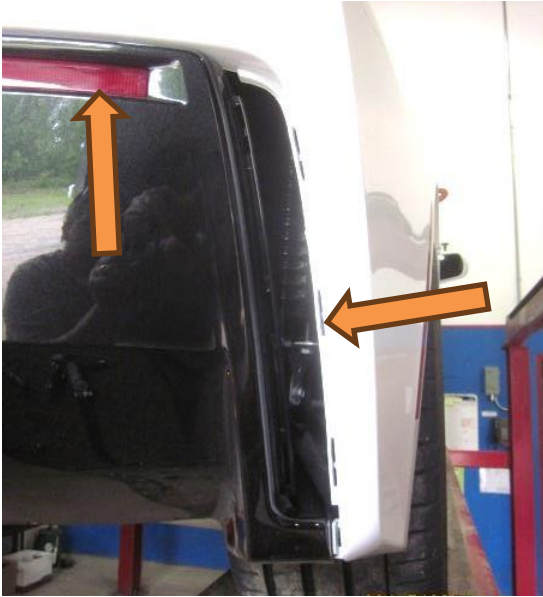


Figure 4



Figure 5

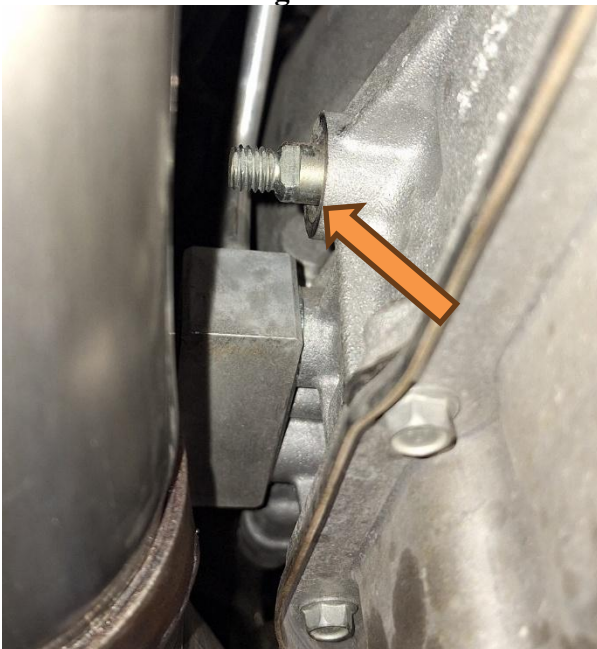


Figure 6

10. Beginning on the passenger side, remove the two bolts securing the rear muffler hanger. Set aside the hanger and hardware to be reused during the installation process. Remove the passenger-side muffler assembly from the vehicle. Repeat for the driver-side muffler assembly.

Installation of MBRP Performance Exhaust

Note: Tuning may be required.

1. Transfer the driver-side AFM valve actuator from the OE exhaust onto the **Driver-side Muffler Assembly** pipe bracket using the OE hardware.

2. Assemble 2 **Spring Pins** into a **Drive Hub** as shown. Refer to Figure 7.

3. Install the **Drive Hub** onto the valve shaft of the **Driver-Side Muffler Assembly**. Transfer the driver-side NPP valve actuator from the OE exhaust onto the **Driver-Side Muffler Assembly**. Be sure the pins on the **Drive Hub** properly engage the lugs on the valve actuator. Secure with the OE hardware. Refer to Figure 8.

4. Install the **Driver-side Over Axle Pipe** using the OE band clamp. Leave the clamp loose enough to allow for adjustment. Refer to Figure 9.

5. Install the **Driver-Side Muffler Assembly** using a **3" Band Clamp** and the rear muffler hanger assembly that was removed in step 10. Position the clamp hardware facing outboard and downward so the nut is accessible with an extension from below, just behind the leaf spring. Reconnect the wiring harness to both valve actuators. Refer to Figure 10.

6. Repeat steps 1-5 for the **Passenger-Side** components.

7. Relocate the AFM valve actuator wiring harness at the rear of the transaxle to profile adequate clearance to the exhaust.



Figure 7



Figure 8



Figure 9



Figure 10

8. Install the **Muffler Bracket** using the **M8x16 Screws** and **M8 Flange Nuts**. Pre-adjust the mufflers so the outlets are inline horizontally, and the middle 2 outlets are 4 5/8" measured center to center. Tighten hardware.

Refer to Figure 11.

9. Re-install the shift cable arm.

10. Reinstall the rear facia and install all Tips. Adjust pipes as required to center the Tips in the rear facia opening.

11. Tighten all hardware and clamps, starting at the front and working rearward to secure the system. Check along the full length of the exhaust system to ensure there is adequate clearance for fuel lines, vent lines, brake lines, frame, bodywork, suspension and any wiring, etc. If there is any interference detected, relocate or adjust to provide adequate clearance. Ensure all clamp connections are secure and components are unable to rotate or slide. Band clamps require approximately 45 lb-ft (60 N-m) of torque. Verify clearances, system security and band clamp torque after 30- 60 miles (50-100 km) of driving.

Congratulations! You are ready to begin experiencing the improved power, sound, and driving experience of your **MBRP** performance exhaust system. We know you will enjoy your purchase.



Figure 11