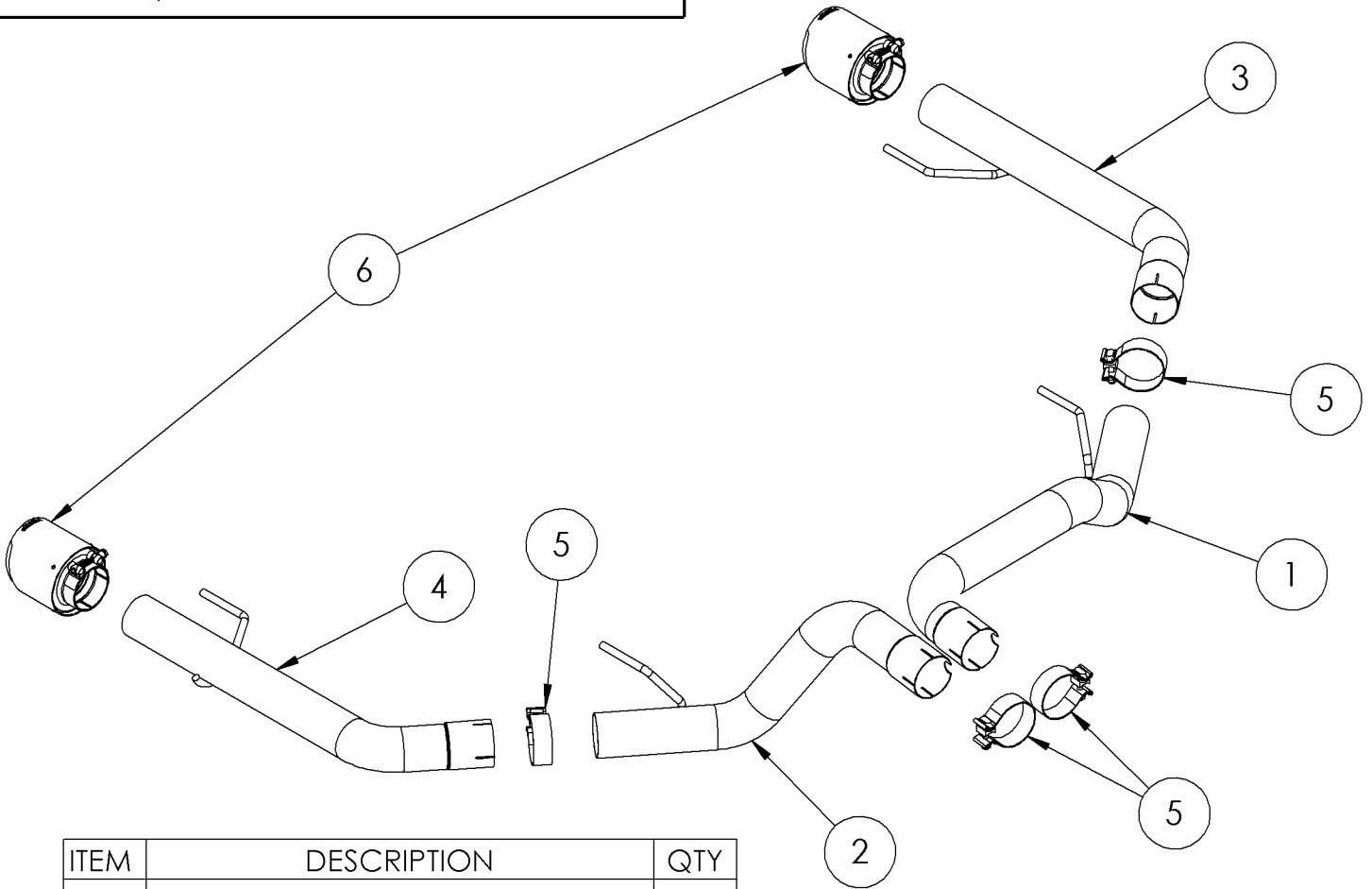


# S5266

2021-UP FORD F-150 RAPTOR,  
3.5L ECOBOOST HO,  
2023-UP RAPTOR R, 5.2L SUPERCHARGED,  
AXLE-BACK, 3.0" DUAL REAR

# MBRP®



ITEM	DESCRIPTION	QTY
1	DRIVER-SIDE OVER-AXLE PIPE	1
2	PASSENGER-SIDE OVER-AXLE PIPE	1
3	DRIVER-SIDE TAIL PIPE	1
4	PASSENGER-SIDE TAIL PIPE	1
5	3.0" CLAMP	4
6	TIP	2

## PLEASE READ BEFORE STARTING INSTALLATION

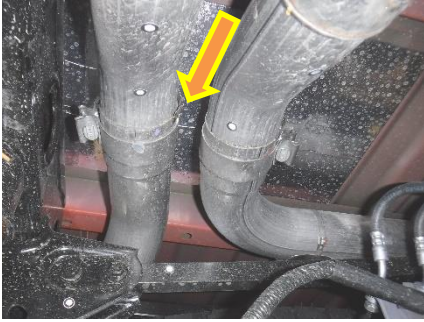
While MBRP has made every effort to ensure that all components of this system are of superior quality and properly packaged, it is the installer's responsibility to ensure the following before removal of the factory exhaust:

- that ALL components shown above are present.
- that ALL mating components fit together.
- that there are no damaged components.
- that the system you have purchased is appropriate for your vehicle year, model and configuration.
- that the system will not interfere with any modifications previously installed or planned.
- that you have read and understand these instructions.

If you have any questions or are uncertain about any aspect of the installation of this system to your vehicle please contact your dealer before commencing installation.

# MBRP

## Removal of Stock System



**Figure 1**

1. Apply penetrating lubricant liberally to all exhaust fasteners, hangers, and rubber insulators.
2. Loosen the tail pipe clamps located above the axle and pry the small retaining clips away from the locating bosses on each pipe.  
**Refer to Figure 1.**



**Figure 2**

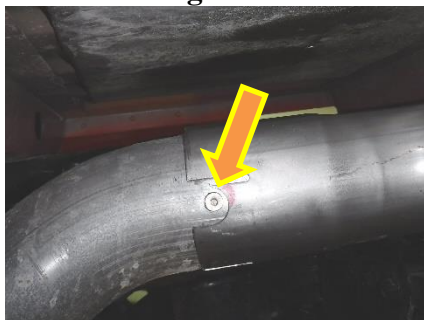
3. Remove both passenger-side tail pipe insulators hardware. Retain the hardware and insulators for the installation.  
**Refer to Figure 2.**
4. Remove the passenger-side tail pipe, with insulators, from the over-axle pipe and vehicle.
5. Repeat steps 3 and 4 for the driver-side.

## Installation of MBRP Performance Exhaust



**Figure 3**

1. Place the factory passenger-side insulator onto the **Passenger-Side Over-Axle Pipe** and, using a **3.0" Clamp**, loosely install the **Passenger-Side Over-Axle Pipe** onto the factory muffler. Reinstall the factory insulator using the original hardware. Ensure factory locating boss is in the notch in the **Over-Axle Pipe**.  
**Refer to Figures 3 and 4.**



**Figure 4**

2. Place the factory passenger-side rear insulator onto the **Passenger-Side Tail Pipe** and, using a **3.0" Clamp**, loosely install the **Passenger-Side Tail Pipe** onto the **Passenger-Side Over-Axle Pipe**. Reinstall the factory rear insulator using the original hardware, but leave loose for final adjustments.  
**Refer to Figure 5.**
3. Repeat steps 1 and 2 for the driver-side.  
**Refer to Figures 6 and 7.**



**Figure 5**

# MBRP



**Figure 6**



**Figure 7**



**Figure 8**



**Figure 9**

4. Install the **Tips** centered and adjust to your liking. Tip location can be finely adjusted by moving the rear tip insulators. Take time now and check alignment each time you tighten a joint.

**Refer to Figures 8 and 9.**

5. Carefully align the system and tips. Align the edge of each band clamp with the edge of the joint it is connecting. Tighten all hardware and clamps, starting at the front and working rearward to secure the system. Check along the full length of the exhaust system to ensure there is adequate clearance for fuel lines, vent lines, brake lines, frame, bodywork, suspension and any wiring, etc. If there is any interference detected, relocate or adjust to provide adequate clearance. Ensure all clamp connections are secure and components are unable to rotate or slide. Band clamps (excluding tip hardware) require approximately 45 lb-ft (60 N-m) of torque. Verify clearances, system security and band clamp torque after 30-60 miles (50-100 km) of driving.



**Congratulations!** You are ready to begin experiencing the improved power, sound and driving experience of your **MBRP** Performance Exhaust. We know you will enjoy your purchase!