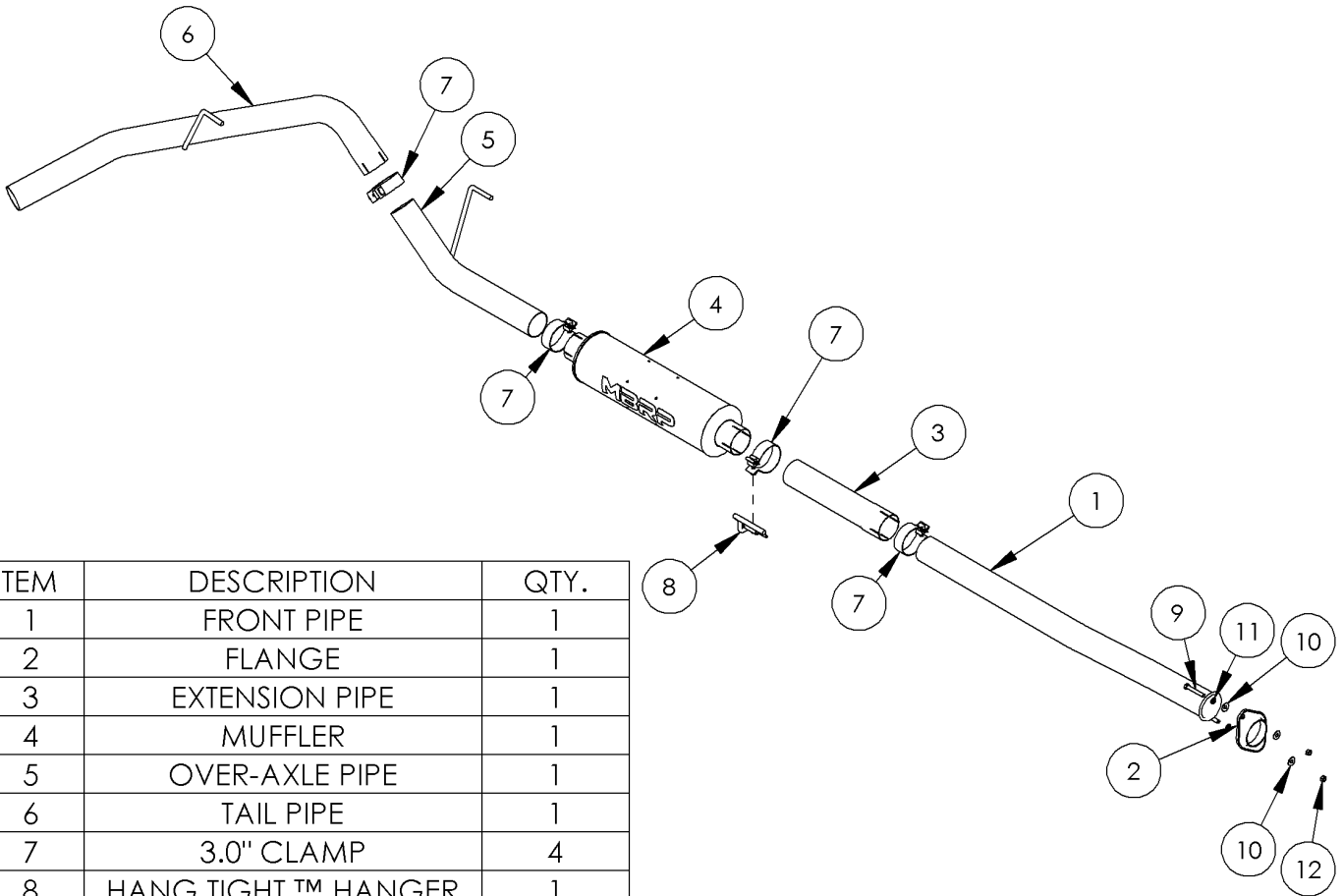


S5210P

09-10 FORD F150 4.6L/5.4L, REGULAR (8' & 6.5' BOX)/EXTENDED (NOT 8' BOX)/CREW CAB,



ITEM	DESCRIPTION	QTY.
1	FRONT PIPE	1
2	FLANGE	1
3	EXTENSION PIPE	1
4	MUFFLER	1
5	OVER-AXLE PIPE	1
6	TAIL PIPE	1
7	3.0" CLAMP	4
8	HANG TIGHT™ HANGER	1
9	HEX BOLT 3/8X2.5"	2
10	3/8" FLAT WASHER	4
11	3/8" LOCK WASHER	2
12	3/8" HEX NUT	2

PLEASE READ BEFORE STARTING INSTALLATION

While MBRP has made every effort to ensure that all components of this system are of superior quality and properly packaged, it is the installer's responsibility to ensure the following before removal of the factory exhaust:

- that ALL components shown above are present.
- that ALL mating components fit together.
- that there are no damaged components.
- that the system you have purchased is appropriate for your vehicle year, model and configuration.
- that the system will not interfere with any modifications previously installed or planned.
- that you have read and understand these instructions.

If you have any questions or are uncertain about any aspect of the installation of this system to your vehicle please contact your dealer before commencing installation.

MBRP®



Figure 1

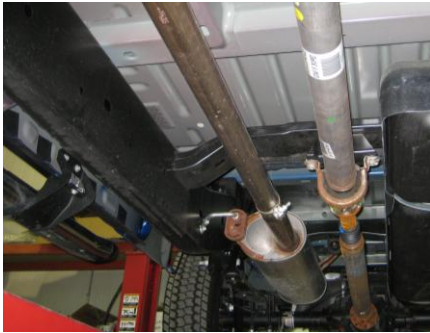


Figure 2



Figure 3



Figure 4

Removal of stock system:

1. Apply a penetrating lubricant liberally to all exhaust fasteners, hangers and rubber insulators.

2. Loosen the flange located behind the “Y” pipe.

Refer to Figure 1.

3. Loosen the clamp located in front of the muffler.

Refer to Figure 2.

4. Remove the hangers from the rubber insulators and remove the exhaust from the vehicle. If a hoist or hydraulic lift is not being used the tail pipe may need to be cut to clear the rear axle.

Refer to Figure 3.

Installation of MBRP Performance Exhaust:

1. Install the **Flange** onto the **Front Pipe**

2. Install **Front Pipe** to the existing flange using the fasteners provided.

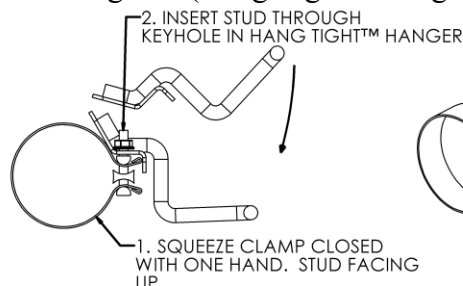
Refer to Figure 4.

Note: The **Extension Pipe** will not be required on some models.

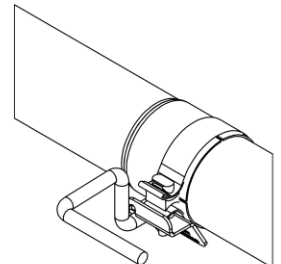
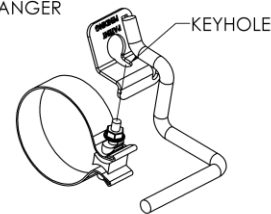
Model	Bed Length	Wheelbase	Extension Pipe Required	Shortening Front Pipe Required
Regular Cab	6.5'	126"	No	19"
Regular Cab	8'	145"	No	No
SuperCab	6.5'	145"	No	No
SuperCab	5.5'	133"	No	11"
SuperCrew	6.5'	157"	Yes	No
SuperCrew	5.5'	145"	No	No

3. Slide a **3” Clamp** over the **Front Pipe** and install **Extension Pipe** onto the **Front Pipe**.

4. Install the **Hang Tight™ Hanger** onto a **3” Band Clamp** using the procedure shown below. Hang the hanger assembly in the stock rubber insulators and appropriate components. Snug up the nut to keep the bracket from falling out. (Hang Tight™ hanger not exactly as shown)



3. ROTATE HANG TIGHT™ HANGER TO SEAT THREADED STUD IN SLOT. BE SURE THE NUT IS ABOVE THE BRACKET



AS INSTALLED ON VEHICLE

MBRP®



Figure 5

5. Install the hanger bracket from step 4 loosely to the **Extension Pipe** (or **Front Pipe** if the **Extension Pipe** is not required) and place the hanger into the existing rubber insulator.
Refer to Figure 5.

6. Slide the **Muffler** onto the **Extension Pipe** or **Front Pipe** as required.
Refer to Figure 6.



Figure 6

7. Loosely install the **Over Axle Pipe** connecting it to the **Muffler** outlet using a **3" Clamp**. Install the hanger into the rubber insulator located above the **Over Axle Pipe**.
Refer to Figure 7.

8. Attach the expanded end of the **Tail Pipe** connect it to the **Over Axle Pipe** using a **3" Clamp**. Slide the **Tail Pipe** hanger into the factory rubber insulator.
Refer to Figure 8.



Figure 7

9. Align the exhaust as required.

10. Tighten all hardware and clamps, starting at the front and working rearward to secure the system. Check along the full length of the exhaust system to ensure there is adequate clearance for fuel lines, vent lines, brake lines, frame, bodywork, suspension and any wiring, etc. If there is any interference detected, relocate or adjust to provide adequate clearance. Ensure all clamp connections are secure and components are unable to rotate or slide. Band clamps require approximately 45 lb-ft (60 N-m) of torque. Verify clearances, system security and band clamp torque after 30-60 miles (50-100 km) of driving.



Figure 8

Congratulations! You are ready to begin experiencing the improved power, sound and driving excitement of your MBRP performance exhaust system. We know you will enjoy your purchase.