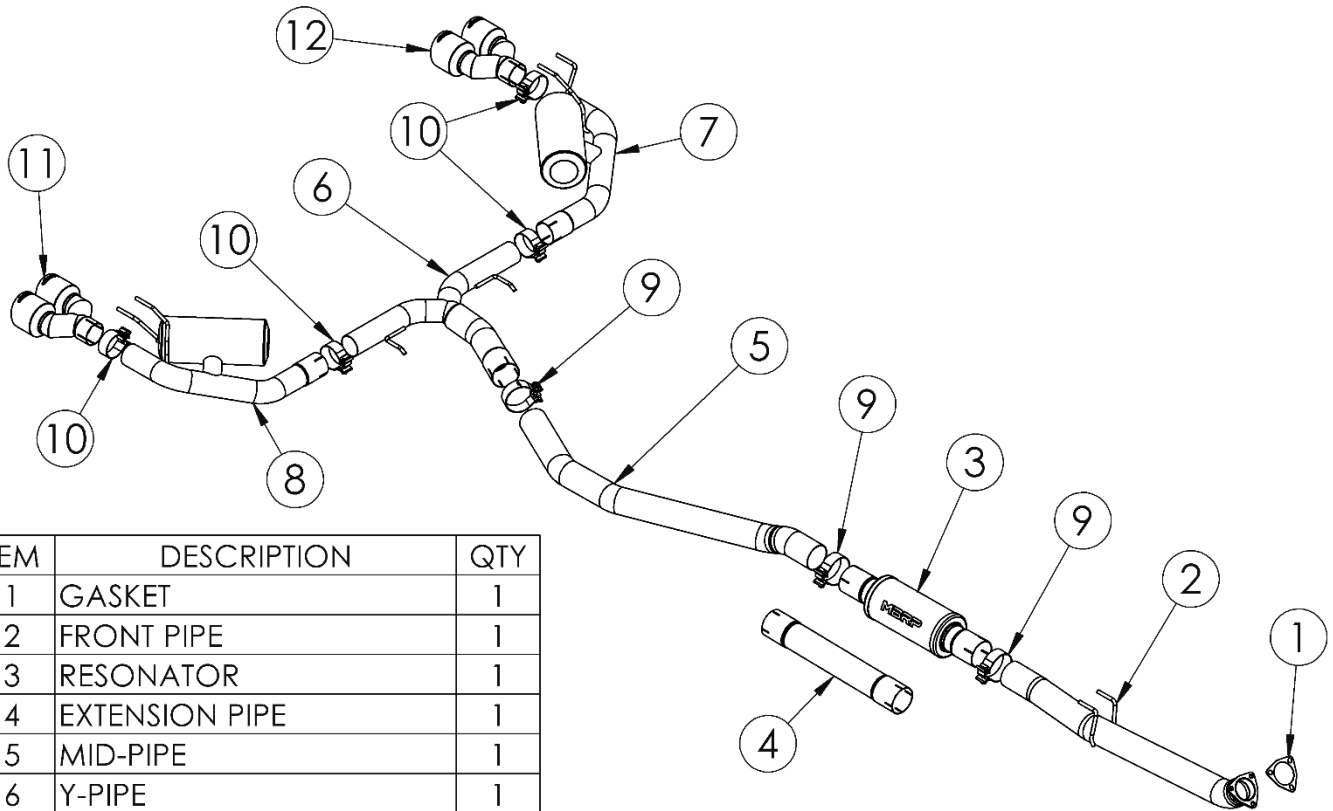


# S4906

2022-UP HONDA CIVIC HATCHBACK,  
SPORT TOURING, 1.5L TURBO,  
3" CAT-BACK, 2.5" DUAL SPLIT REAR

# MBRP®



| ITEM | DESCRIPTION              | QTY |
|------|--------------------------|-----|
| 1    | GASKET                   | 1   |
| 2    | FRONT PIPE               | 1   |
| 3    | RESONATOR                | 1   |
| 4    | EXTENSION PIPE           | 1   |
| 5    | MID-PIPE                 | 1   |
| 6    | Y-PIPE                   | 1   |
| 7    | DRIVER-SIDE TAIL PIPE    | 1   |
| 8    | PASSENGER-SIDE TAIL PIPE | 1   |
| 9    | 3.0" CLAMP               | 3   |
| 10   | 2.5" CLAMP               | 4   |
| 11   | PASSENGER-SIDE TIP       | 1   |
| 12   | DRIVER-SIDE TIP          | 1   |

Refer to this LOT NUMBER when contacting customer service: \_\_\_\_\_

## PLEASE READ BEFORE STARTING INSTALLATION

While MBRP has made every effort to ensure that all components of this system are of superior quality and properly packaged, it is the installer's responsibility to ensure the following before removal of the factory exhaust:

- that ALL components shown above are present.
- that ALL mating components fit together.
- that there are no damaged components.
- that the system you have purchased is appropriate for your vehicle year, model and configuration.
- that the system will not interfere with any modifications previously installed or planned.
- that you have read and understand these instructions.

If you have any questions or are uncertain about any aspect of the installation of this system to your vehicle please contact your dealer before commencing installation.

# MBRP

## Removal of Stock System



Figure 1



Figure 2



Figure 3



Figure 4

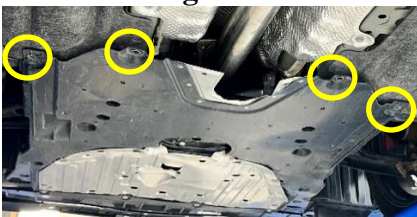


Figure 5



Figure 6

1. Apply penetrating lubricant liberally to all exhaust fasteners, hangers, and rubber isolators.
2. Remove the 6 plastic push pins securing the bumper valence to the trunk floor and exhaust bezels.  
**Refer to Figures 1 and 2.**
3. Remove the 2 screws behind the bumper on either side of the factory exhaust bezels that secure them to the bumper. Push the bezel away from the bumper (towards the front of the car) to release the plastic clips and remove the exhaust bezels.  
**Refer to Figures 3 and 4.**
4. Remove the four 10mm fasteners holding the front plastic cover to the vehicle to access the front pipe fasteners. Retain hardware for reinstallation.  
**Refer to Figure 5.**
5. Un-bolt the rear of the factory cat-back from the front pipe.  
**Refer to Figure 6.**
6. Disconnect all rubber isolators and remove the rear of the factory exhaust. It is recommended to have a support under the exhaust or a second person to assist in this step.

**Retain all rubber isolators as they will be reused.**

## Installation of MBRP Performance Exhaust

1. Install the supplied **Gasket** over the studs of the OEM front pipe.
2. Install the OEM dual rubber isolator onto the **Front Pipe** hangers, noting the "UP" direction on the isolator. Slide the rubber isolator all the way to the inlet side of the hangers. Install the **Front Pipe** to the factory flange with the supplied **Gasket** in between. Slide the dual rubber isolator over the factory mounting location on the vehicle. Secure the flange with the factory hardware.  
**Refer to Figure 7.**
3. Choose between the **Resonator** or the **Extension Pipe** and install **3" Band Clamps** on either end of the chosen pipe.  
**Refer to Figure 8.**
4. Install the **Mid-Pipe** into the outlet of the **Resonator** or **Extension Pipe**.
5. Install the **Y-Pipe** onto the **Mid-Pipe** using a **3" Band Clamp** while simultaneously installing the **Y-Pipe** hangers into the rubber isolators.  
**Refer to Figure 9.**

# MBRP



Figure 7



Figure 8



Figure 9



Figure 10

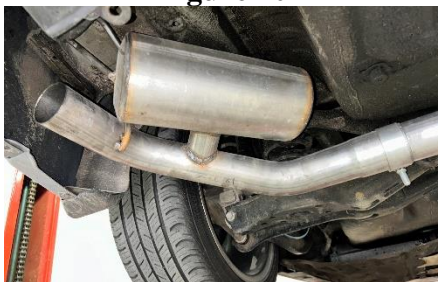


Figure 11



Figure 12

6. Install the rear rubber isolators on to the **Driver-Side Tail Pipe** and the **Passenger-Side Tail Pipe**.  
See **Figure 10**.

7. Install each **Tail Pipe** onto its respective side with a **2.5" Band Clamp**. First slide the clamp joint together, and then rotate the pipe into position and install the rubber isolator to the vehicle in the factory location.  
Refer to **Figure 11**.

8. Install the **Exhaust Tips** onto the outlets of the **Tail Pipes** and adjust to your preference.  
Refer to **Figure 12**.

9. Tighten all hardware and clamps, starting at the front and working rearward to secure the system. Reattach the front plastic cover with previously removed hardware. Check along the full length of the exhaust system to ensure there is adequate clearance for fuel lines, vent lines, brake lines, frame, bodywork, suspension, and any wiring, etc. If there is any interference detected, relocate, or adjust to provide adequate clearance. Ensure all clamp connections are secure and components are unable to rotate or slide. Band clamps require approximately 45 lb-ft (60 N-m) of torque. Verify clearances, system security and band clamp torque after 30-60 miles (50-100 km) of driving.



**Congratulations!** You are ready to begin experiencing the improved power, sound and driving experience of your **MBRP** Performance Exhaust. We know you will enjoy your purchase!