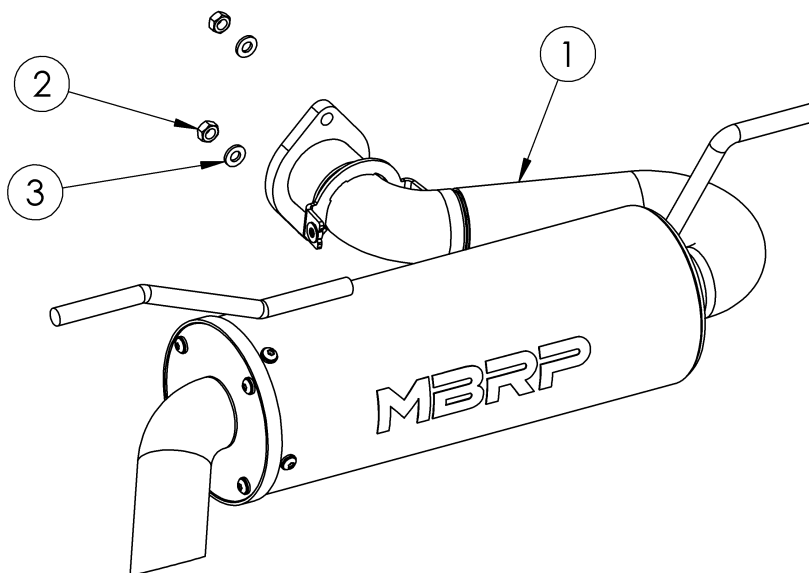


AT-9803PT

MUFFLER ASSEMBLY, PERFORMANCE
2025-UP CFMOTO UFORCE U10 PRO

MBRP



ITEM NO.	DESCRIPTION	QTY
1	MUFFLER ASSEMBLY	1
2	HEX NUT	2
3	M8 LOCK WASHER	2

Refer to this LOT NUMBER when contacting customer service: _____

PLEASE READ BEFORE STARTING INSTALLATION

While MBRP Ltd. has made every effort to ensure that all components of this system are of superior quality and properly packaged, it is the installer's responsibility to ensure the following before removal of the factory exhaust:

- that ALL components shown above are present.
- that ALL mating components fit together.
- that there are no damaged components.
- that the system you have purchased is appropriate for your vehicle year, model and configuration.
- that the system will not interfere with any modifications previously installed or planned.
- that you have read and understand these instructions.

If you have any questions or are uncertain about any aspect of the installation of this system to your vehicle please contact your dealer before commencing installation.

MBRP

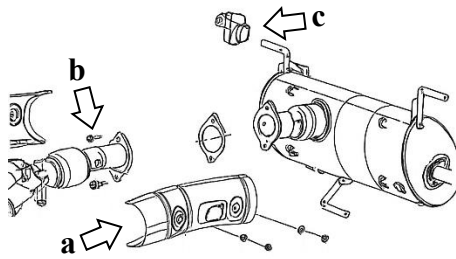


Figure 1



Figure 2

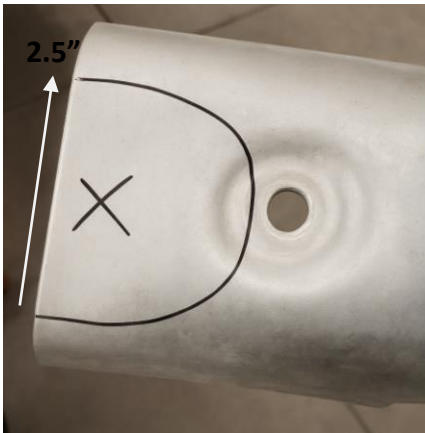


Figure 3



Figure 4

Removal of Stock Exhaust:

1. Remove the four (4) screws securing the heat shields that cover the muffler inlet connection. Retain all parts as they will be reused. **Refer to Figure 1 (a).**
2. Remove the two (2) bolts securing the inlet flange on the stock muffler. Retain the stock bolts and gasket. **Refer to Figure 1 (b).**
3. Remove the upper passenger-side hanger mount by removing the two (2) screws attaching it to the rear frame. **Refer to Figure 1 (c).** Note that the muffler will need to be supported once the bracket is loosened and removed.
4. Remove the muffler by sliding it towards the passenger side and freeing the two remaining hangers from their mounts.

Installation of MBRP Exhaust:

1. Remove the hanger mount from the stock muffler and slide it onto the passenger-side hanger of the **Muffler Assembly**.
2. Slide the left (outlet side) hanger on the **Muffler Assembly** into the driver-side hanger mount, then reattach the passenger-side mount using the two screws that were previously removed.
3. Line up the **Muffler Assembly** inlet flange to the stock front pipe flange. Insert the stock gasket between the flanges and secure them together using the two (2) **Hex Nuts** and **Lock Washers** along with the stock bolts removed in step 2. **Refer to Figure 2.**
4. In order to reuse the inlet pipe heat shield, the passenger-side shield needs to be trimmed to clear the inlet pipe on the **Muffler Assembly**. Mark the cut line shown in **Figure 3** and trim the shield to it. Adjust as necessary to allow proper fitment, then reattach both shields with the screws that were removed previously. **Refer to Figure 4.**

It is recommended that the muffler screws (including the end cap and tip screws) be retightened after the first ride (60in-lbs) and checked periodically thereafter, tightening if necessary.



Congratulations! You are ready to begin experiencing the improved performance and driving excitement of your MBRP ATV Exhaust upgrade. We know you will enjoy your purchase.



Figure 1



Figure 2



Figure 3



Figure 4

Spark Arrestor Maintenance

In order to maintain optimal performance, the spark arrestor screen should be cleaned after the first 3 hours of operation, then every 30-35 hours of use thereafter.

Clean-out Instructions:

Make sure the vehicle is cool before completing the clean-out procedure.

1. Using a 4mm hex key, remove the 4 screws securing the outlet cap or tip. **(Figure 1)**
2. Remove the outlet cap to expose the spark arrestor screen insert. **(Figure 2)**
3. Remove the screen insert. **(Figure 3)**
4. Using a wire brush, thoroughly brush the screen to remove residue. **(Figure 4)**
5. Replace the screen and cap.
6. Tighten the screws to 60 in-lbs (6.8 Nm).