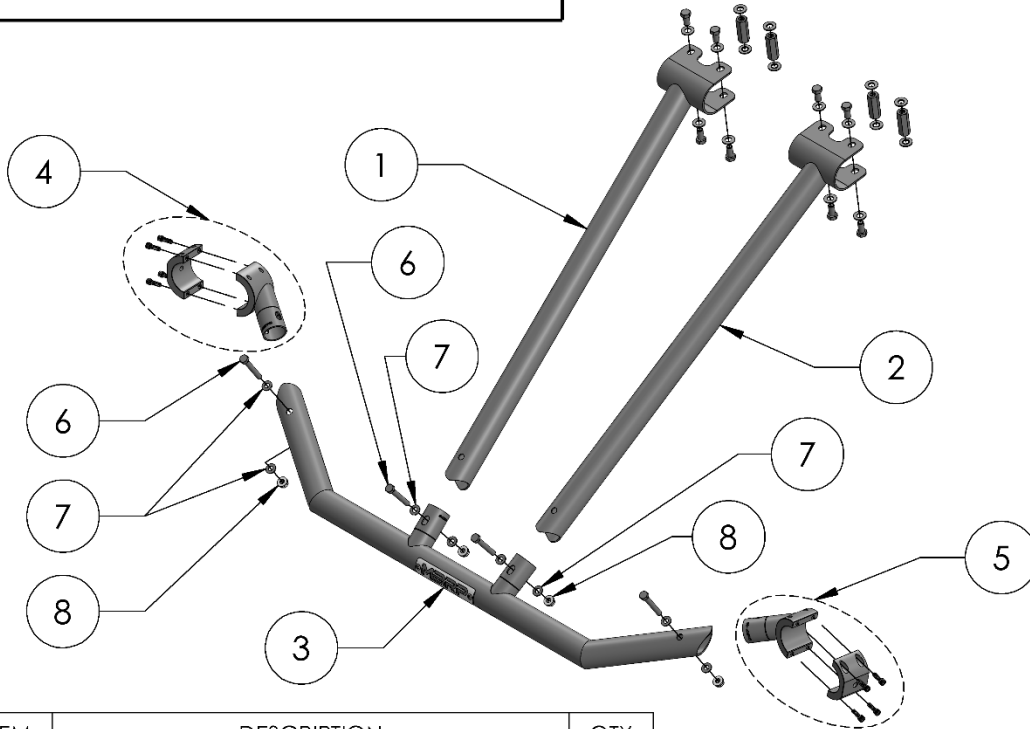


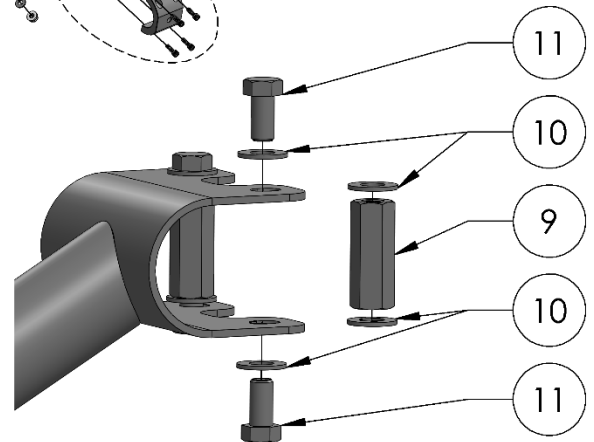
# AC-9533-02

FRONT-INTRUSION BAR,  
2022-UP POLARIS RZR PRO R,  
2022-UP POLARIS RZR PRO R 4

# MBRP®



ITEM	DESCRIPTION	QTY
1	RIGHT-SIDE UPRIGHT	1
2	LEFT-SIDE UPRIGHT	1
3	CROSSBAR	1
4	RIGHT-SIDE CROSSBAR MOUNT	1
5	LEFT-SIDE CROSSBAR MOUNT	1
6	M8 X 60 MM HEX BOLT	4
7	M8 WASHER	8
8	M8 FLANGE NUT	4
9	3/8-16 X 1 3/4" HEX STANDOFF	4
10	3/8" FLAT WASHER	16
11	3/8-16 X 3/4" HEX BOLT	8



Refer to this **LOT NUMBER** when contacting customer service: \_\_\_\_\_

## PLEASE READ BEFORE STARTING INSTALLATION

While MBRP has made every effort to ensure that all components of this system are of superior quality and properly packaged, it is the installer's responsibility to ensure the following:

- that ALL components shown above are present.
- that ALL mating components fit together.
- that there are no damaged components.
- that the system you have purchased is appropriate for your vehicle year, model and configuration.
- that the system will not interfere with any modifications previously installed or planned.
- that you have read and understand these instructions.

If you have any questions or are uncertain about any aspect of the installation of this system to your vehicle please contact your dealer before commencing installation.

# MBRP

**THOROUGHLY APPLY ANTI-SEIZE COMPOUND TO ALL TUBE CLAMP AND HEX STANDOFF THREADED CONNECTIONS**

1. Disassemble the **Crossbar Mount** clamps, retain all for installation.

2. Lay out and slide all couplings together. Ensure to have the left and right-side **Uprights** located correctly. Loosely fasten the **Uprights** to the **Crossbar** using **M8 hardware**, do not tighten. Leave the **Crossbar Mounts** unfastened, they need to pivot for the installation.

**Refer to Figure 1 and 2 and Page 1.**

3. Slide the tube clamps for the **Uprights** over the top of the roll cage, then pivot the **Crossbar Mounts** and rest the **Front-Intrusion Bar** assembly on the roll cage pillars.

4. Loosely assemble the **Upright** tube clamps using **3/8" Hex Standoffs, Hex Bolts and Flat Washers**. Each connection should use one **Hex Standoff**, two **Bolts** and four **Washers**. Follow the assembly order shown on Page 1.

**Refer to Figure 4 and Page 1.**

5. Loosely reassemble the tube clamps for the **Crossbar Mounts** to locate the **Crossbar** in the desired position, then install **M8 hardware** fastening the **Crossbar** to the **Crossbar Mounts**.

6. Carefully align the **Front-Intrusion Bar** and begin tightening all hardware; Starting with the **Upright** to top bar connections, followed by the **Crossbar Mount** connections, and finishing with the **Crossbar** to **Upright** connections.



**Figure 1**



**Figure 2**



**Figure 3**



**Figure 4**



**Congratulations!** You are ready to begin using your **MBRP** Front-Intrusion Bar. We know you will enjoy your purchase.