

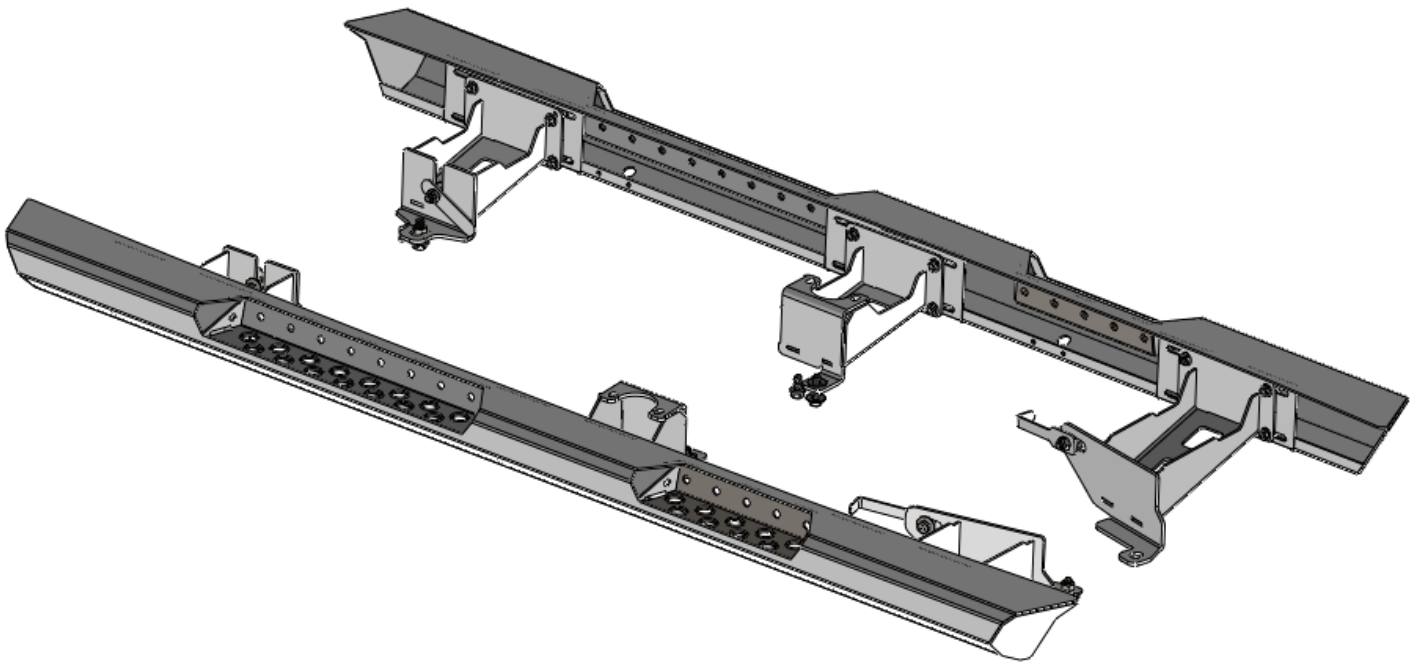


DESTROYER SERIES

JT

JEEP JT 4DR DESTROYER
SLIDERS

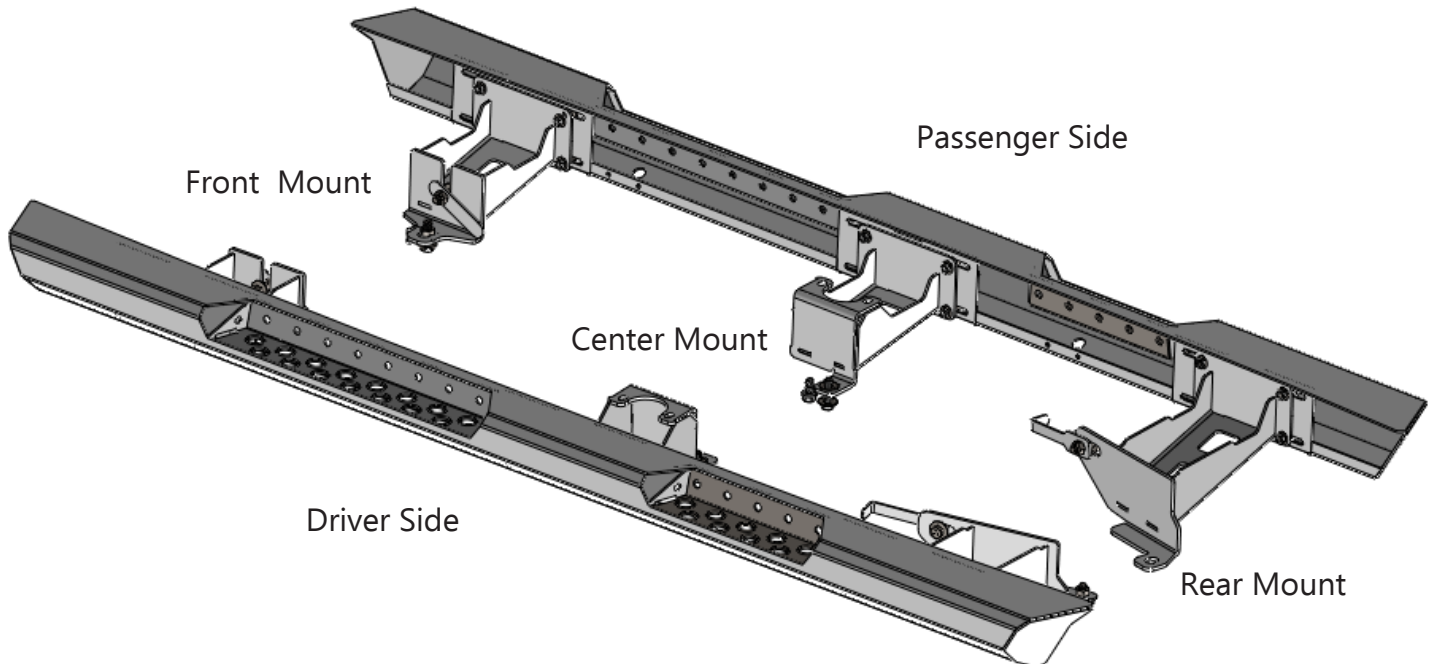
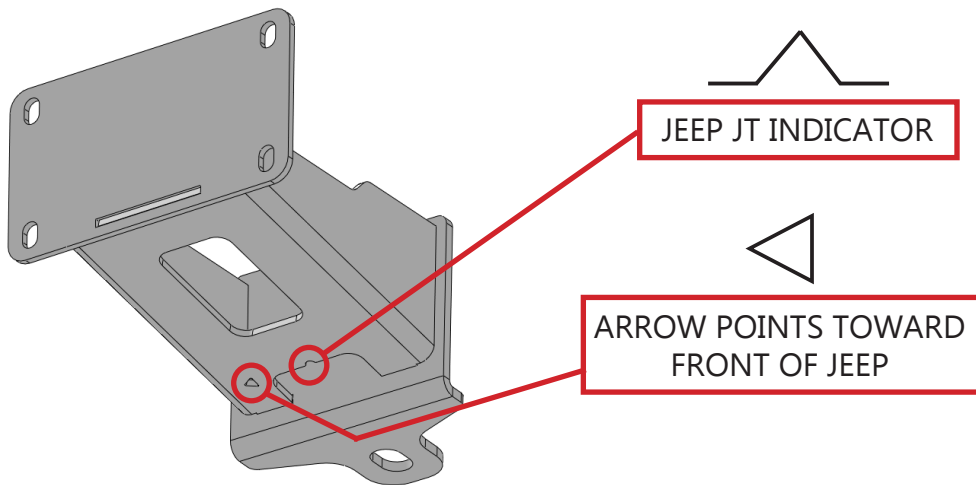
***VERIFY YOU HAVE ALL THE COMPONENTS BEFORE STARTING THE INSTALLATION. REFER TO THE
ENGINEERING DRAWINGS AT THE END OF THIS DOCUMENT FOR A COMPLETE PARTS LIST***



Getting Started:

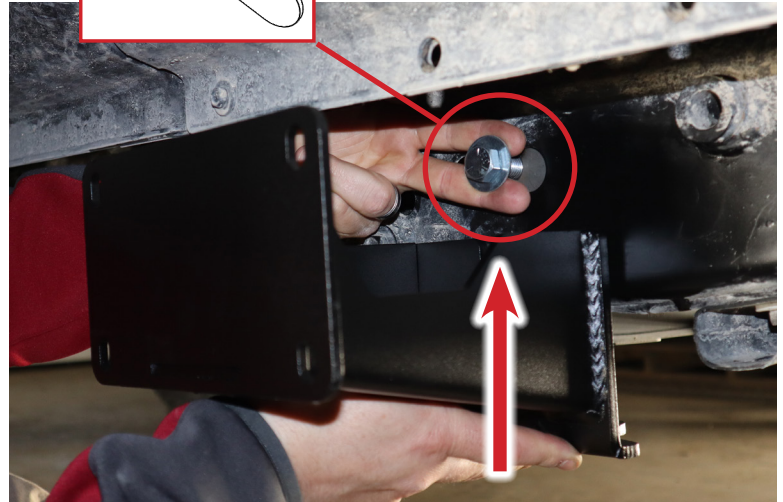
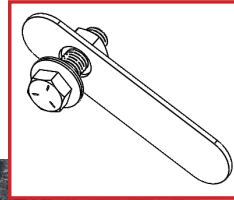
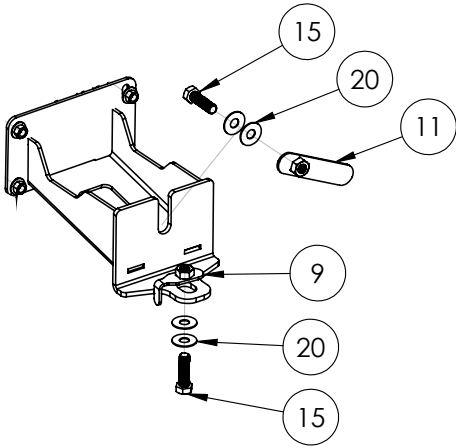
Before installation be sure to check your the bottom of your frame near where the mounts are installed for any oversize or drippy welds. The bottom of the frame should be smooth, if not you will need to grind the welds down slightly. Be sure to touch up the grinding area with paint to prevent rust.

Start by laying out each mount in their position, front-center-rear for both driver and passenger sides. On the bottom of each mount, there are two marks, the small pointed notch indicates that the mount is for a Jeep JT, the arrow/triangle points towards the front of the Jeep.



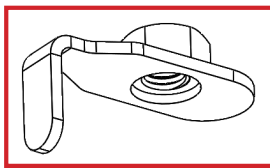
Installing the Front Mounts:

Install the Front Mounts as shown. Install the 1/2" Hex Bolt and Washers onto the Flag Nut first and then insert the Flag Nut into the large slot on the frame rail. Be careful not to drop the Flag Nut into the frame.

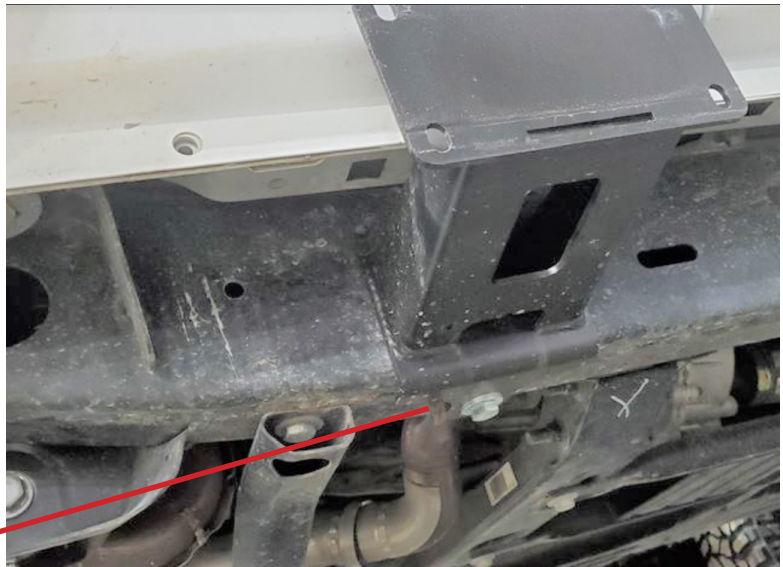


Using your fingers, hold the Flag Nut in the frame as shown above. Then slide the driver side Front Mount up into position while holding the Hex Bolt and Washer. Once in position tighten the Hex Bolt just enough to hold the mount in place.

Install the lower Flag Nut into the frame rail thru the small slot on the bottom of the frame and install the 1/2" Hex Bolt and Washers. The tab on the Flag Nut will hang down thru the bottom of the frame. If you have trouble getting the Flag Nut thru the frame, you may need to enlarge the slot slightly with a file or dremel.



Hole in frame rail for Flag Nut

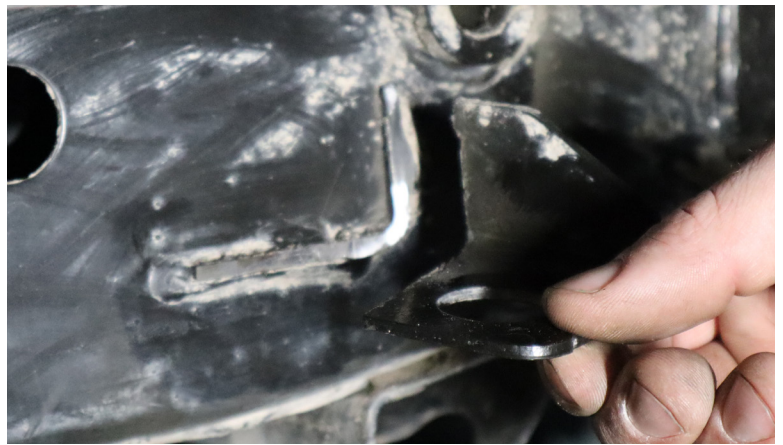


Slowly tighten both Hex Bolts equally. You can use a combination wrench or ratchet with a 3" extension to tighten the Hex Bolt in side of the frame rail.

Before installing the passenger side Front Mount, you will need to remove the frame alignment tab on the side of the frame rail.



Use an angle grinder with a cutoff wheel to cutoff the alignment tab as close to the frame as possible.

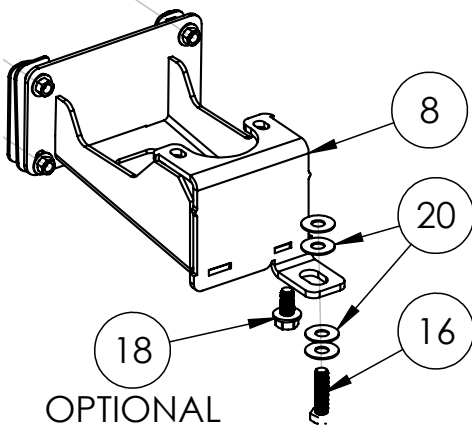
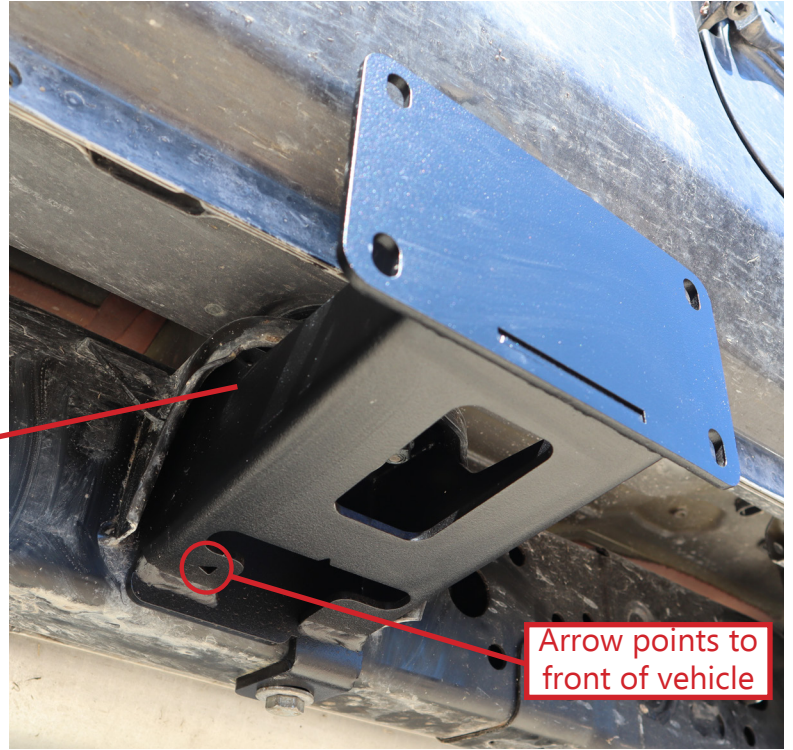
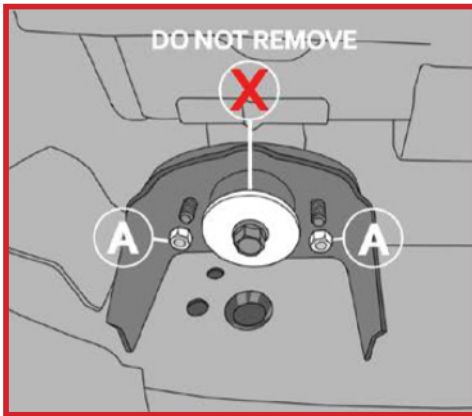


Use a flap disc or other grinding disk to grind the area smooth and flush with the frame rail. Clean the area and coat with a few good coats of Rustoleum Black spray paint before installing the front mount.



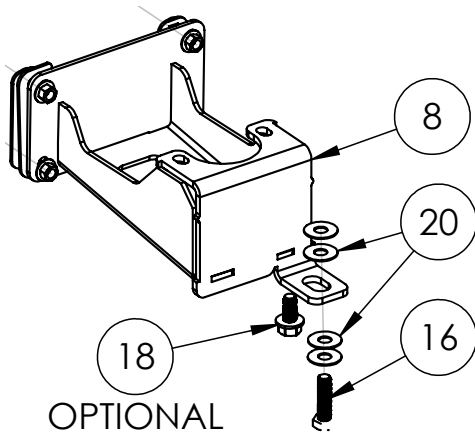
Installing the Center Mounts:

Install the Center Mounts as shown using the two body isolator nuts "A" shown below. You may need to loosen the large center bolt slightly if the large washer is in the way, but do not remove it. ****Leave these nuts loose while you finish the installation. You will tighten up this mount in the end.****



Install the M12 Hex Bolt as shown. You may double up the washers for extra strength. Every Jeep frame is slightly different. If you notice a small gap between the frame and the Center Mount lower tab, we include additional spacer washers to fill in this gap.

****Be sure to leave this bolt loose while you finish the installation. You will tighten this bolt in the end. ****



Optional mounting location

Some Gladiators may be missing a mounting hole for the center mount. This lower mounting hole is optional (on both passenger and driver side Center Mounts), but recommended for offroad use.

We have included two self tapping bolts to use in this location. Drill 7/16"Ø hole and insert the self tapping Thread Roller bolts provided. Slowly tighten until fully seated. Or if you prefer you may drill and tap for a 1/2" bolt (not provided).

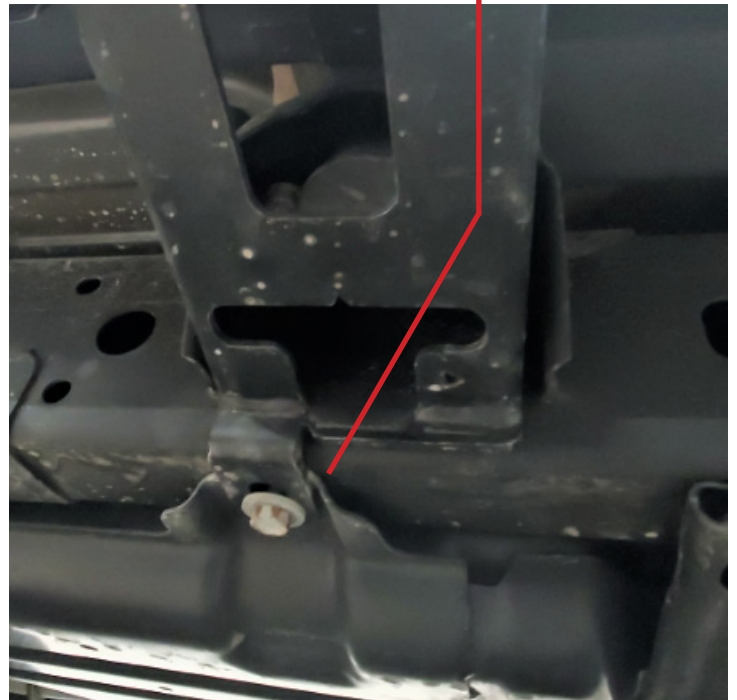
****Be sure to leave this bolt loose while you finish the installation. You will tighten this bolt in the end. ****

On the passenger side, your center mount will use the same mounting hole as the gas tank skid plate. When you install the center mount, be sure the mounting tab sits over the gas tank skid plate as shown.

****Be sure to leave this bolt loose while you finish the installation. You will tighten this bolt in the end. ****

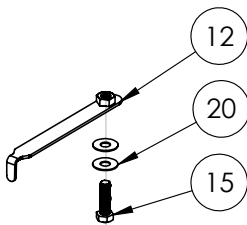
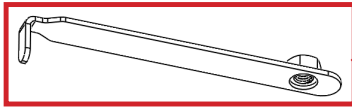
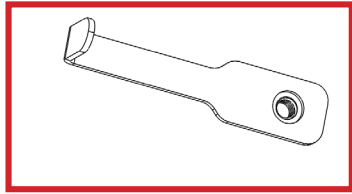
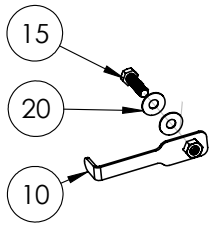
Do not lower your skid plate and attempt to mount inbetween the skid plate and the frame.

Mount over gas tank skid plate



Installing the Rear Mounts:

Install the Rear Mounts as shown using 1/2" Hex Bolts and Washers. Use the supplied Flag Nuts inside the frame and tighten securely. It may be helpful to have a helper hold the mount while you assemble the bolts.



THESE ARE USED ON THE
DRIVER SIDE LOWER
MOUNTING POSITION ONLY

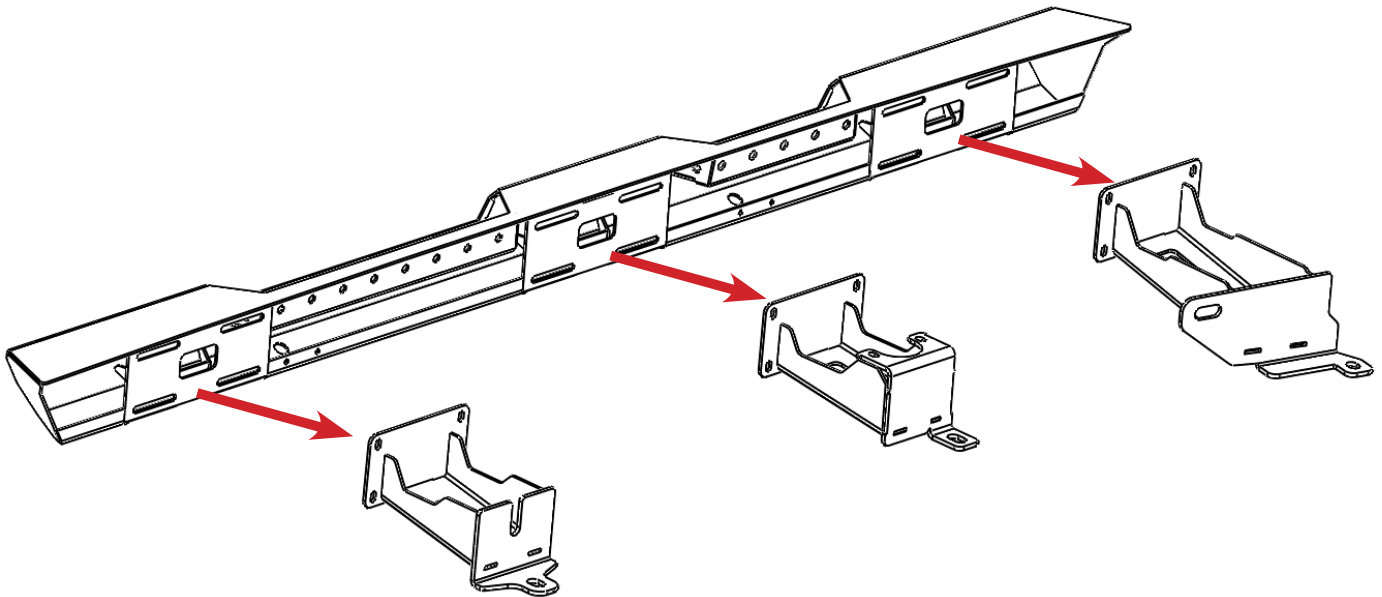
****Use the existing frame bolt on the passenger side for the lower mounting hole.****

Installing the Slider Body:

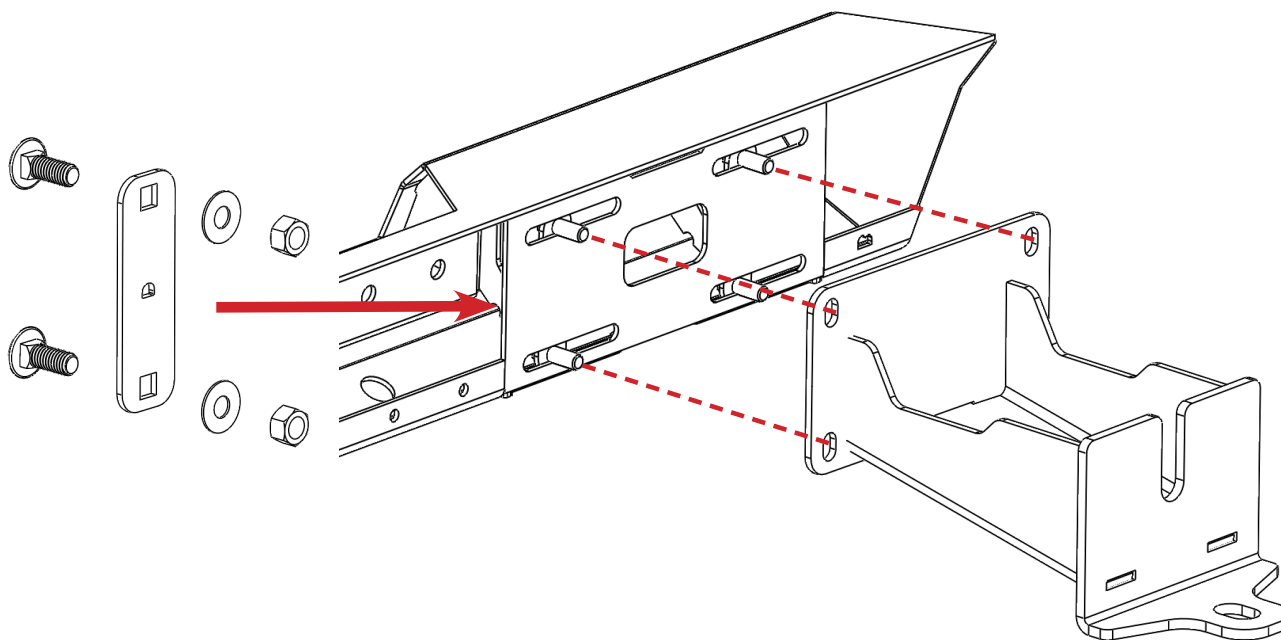
With your mounts installed and all bolts tight you can mount the Slider Body into position. The driver side is shown here, the installation will be the same for both sides.



Place the Slider Body up to the Mounts and hold in the position shown while a helper installs the bolt plates for each mount.



The Front, Center and Rear Mounts will use the Backup Plate shown here. Install the Backup Plate from inside the Slider Body and secure with the 3/8" Carriage Bolt, Hex Nut and Washer. Leave these loose while you install the other Backup Plates and Carriage Bolts.



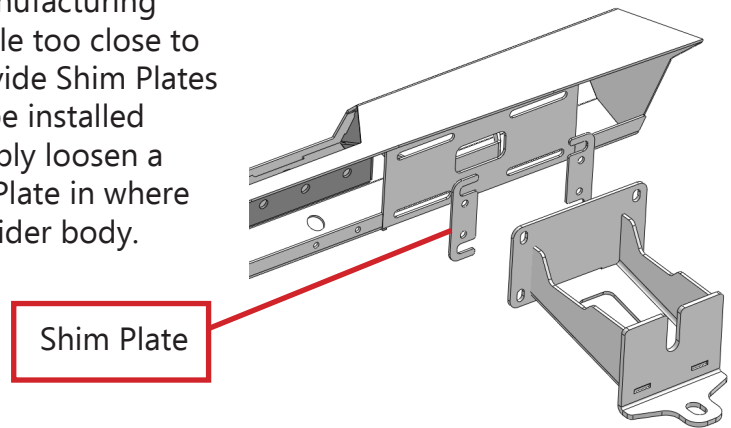
If necessary adjust the sliders slightly by rotating it, or moving up/down or forward/backward to center the sliders and get an even gap between the top sliders and your Jeep body.

For offroad use, we recommend that the Slider Body be in its lowest position possible to provide a greater gap between the Slider Body and the Jeep rocker panel.



Once you have your Slider in the perfect position, be sure to tighten all the bolt plates evenly. Also dont forget to completely tighten any of the mounts that were left loose.

Every Jeep is different and due to the Jeep manufacturing process, you might find that your slider is a little too close to the body of your Jeep. To resolve this we provide Shim Plates to help get the perfect gap. These plates can be installed without completely removing your slider. Simply loosen a few of the mounting bolts and slide the Shim Plate in where needed between the mount and back of the slider body.



****Maintenance****

- Periodically check and re-tighten all fasteners.
- Periodically check your Sliders for scratches or dings which can happen over time or after heavy use or highway driving. It is important to address these areas as soon as possible to prevent flaking and corrosion or rust from spreading. We recommend using Rustoleum® brand Black Semi-Gloss Protective Enamel (oil based). Remove loose powder coating, sand the area and clean using alcohol. Apply using a foam brush by dabbing to match the powder coat texture.



| ITEM NO. | PART NUMBER | DESCRIPTION | QTY. |
|----------|-------------|---------------------------------|------|
| 1 | 4JRS2004-01 | JT DESTROYER BODY - DS WELDMENT | 1 |
| 2 | 4JRS2004-02 | JT DESTROYER BODY - PS WELDMENT | 1 |
| 3 | 4JRS2060-04 | JT SLIDER FRONT MOUNT DS | 1 |
| 4 | 4JRS2060-01 | JT SLIDER FRONT MOUNT PS | 1 |
| 5 | 4JRS2060-06 | JT SLIDER REAR MOUNT DS | 1 |
| 6 | 4JRS2060-03 | JT SLIDER REAR MOUNT PS | 1 |
| 7 | 4JRS2060-11 | JT SLIDER CENTER MOUNT DS | 1 |
| 8 | 4JRS2060-12 | JT SLIDER CENTER MOUNT PS | 1 |
| 9 | 4JRS1860-07 | FRONT LOWER FLAG NUT | 2 |
| 10 | 4JRS2060-07 | REAR FLAG NUT | 2 |
| 11 | 4JRS1860-08 | FRONT FLAG NUT | 2 |
| 12 | 4JRS2060-08 | LOWER REAR FLAG NUT | 1 |
| 13 | 2BRS2021-41 | DESTROYER DOUBLE BACKUP PLATE | 12 |
| 14 | 2JRS1860-29 | MOUNT SHIM PLATE | 6 |

| HARDWARE | | | |
|----------|------------------|--|------|
| ITEM NO. | PART NUMBER | DESCRIPTION | QTY. |
| 15 | HB5013287PGR5 | HEX BOLT 1/2-13 X 1.75 HEX BOLT ZINC PLATE GR5 | 7 |
| 16 | HB12150M457PCL88 | HEX BOLT M12-1.50 X 45mm ZINC PLATE CL8.8 | 2 |
| 17 | CB8816162PGR5 | CARRIAGE BOLT 3/8-16 X 1.00 ZINC PLATE GR5 | 24 |
| 18 | TR5013167P | THREAD ROLLER 1/2-13 X 1.00 HEX ZINC PLATE | 2 |
| 19 | FW31147P | FLAT WASHER Ø5/16" X .875" ZINC PLATE | 24 |
| 20 | FW43187P | FLAT WASHER Ø7/16 X 1.25" ZINC PLATED | 22 |
| 21 | HN38167PGR5 | HEX NUT 3/8-16 ZINC PLATE GR5 | 24 |

THESE ARE USED ON THE DRIVER SIDE LOWER MOUNTING POSITION ONLY

OPTIONAL

NOTES:
 1. JRS2004 = BARE STEEL OPTION
 2. JRS2014 = BLACK POWDER COAT
 3. WEIGHT = APPROX 149.59 LBS

UNLESS OTHERWISE SPECIFIED:
 DIMENSIONS ARE IN INCHES
 TOLERANCES: ±0.010
 FINISH: UNLESS OTHERWISE SPECIFIED
 TWO PLACE DECIMAL ±0.015
 THREE PLACE DECIMAL ±0.005

PROPRIETARY AND CONFIDENTIAL
 THE INFORMATION CONTAINED IN THIS DRAWING IS THE PROPERTY OF LOD LLC. ANY REPRODUCTION IN PART OR AS A WHOLE WITHOUT THE WRITTEN PERMISSION OF LOD LLC IS PROHIBITED.

MATERIAL: N/A
 FINISH: SEE NOTES
 ECO: 1081

NAME: MCH DATE: 5/23/2022
 DRAWN: CHECKED: ENG APPR: MFG APPR:

LOD LLC.
 DESCRIPTION:
 JEEP JT 4DR DESTROYER SLIDERS

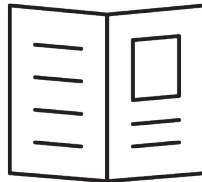
DWG. NO. JRS2004 JRS2014
 SCALE: 1:8 SHEET SIZE: B SHEET 1 OF 1



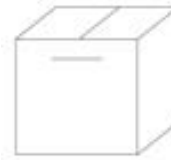
JT Jeep
DESTROYER SERIES
 JEEP JT DESTROYER
 SLIDERS
 SHIPPING SHEET - BOX 1

Packaged by:

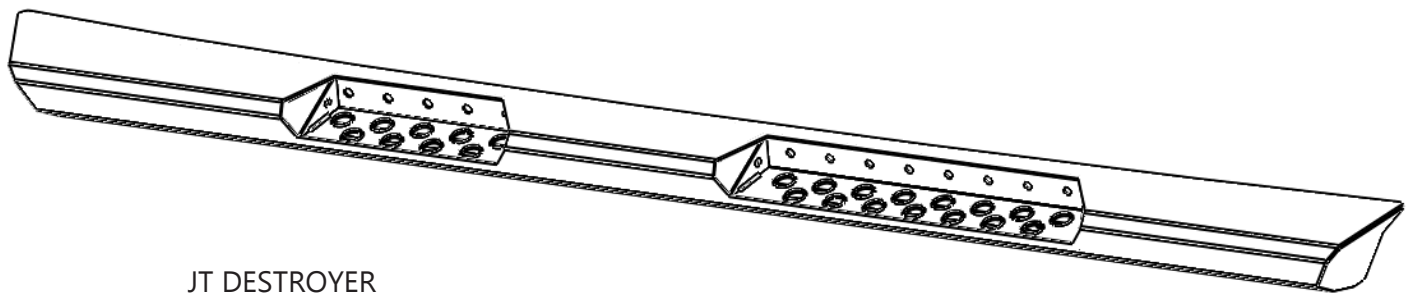
On:



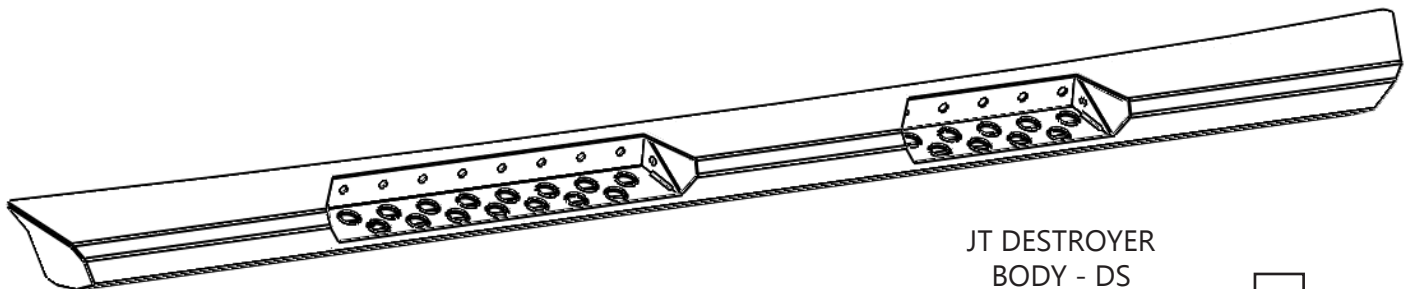
Instruction
Booklet



Hardware Kit




JT DESTROYER
 BODY - PS
 4JRS2004-02
(x1)



JT DESTROYER
 BODY - DS
 4JRS2004-01
(x1)

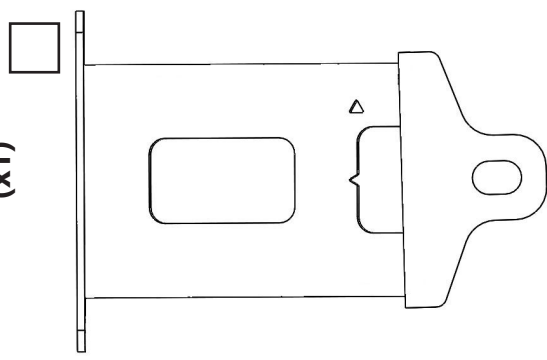




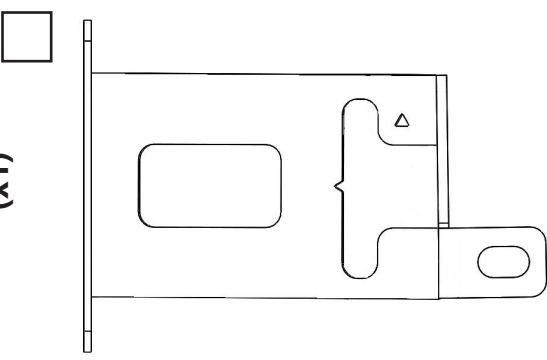
JT Jeep
DESTROYER SERIES
 JEEP JT 4DR DESTROYER
 SLIDERS
 SHIPPING SHEET - BOX 2

Packaged by: _____
 On: _____

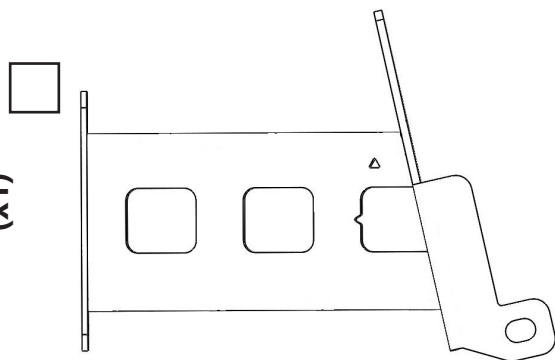
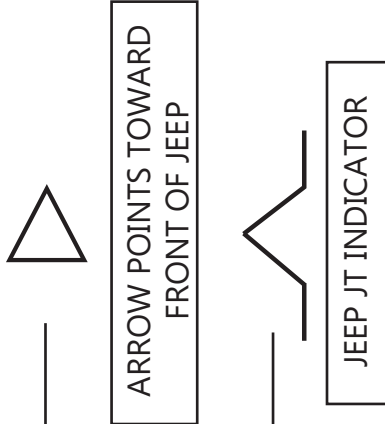
JT SLIDER FRONT MOUNT - PS
 4JRS2060-01
(x1)



JT SLIDER CENTER MOUNT - PS
 4JRS2060-12
(x1)



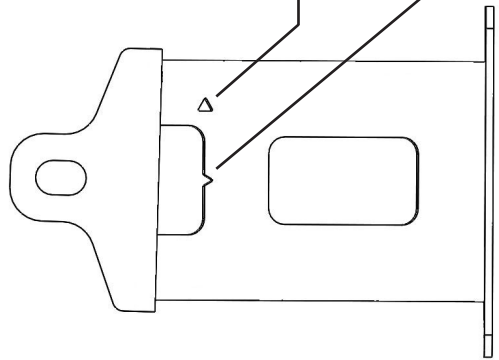
JT SLIDER REAR MOUNT - PS
 4JRS2060-03
(x1)

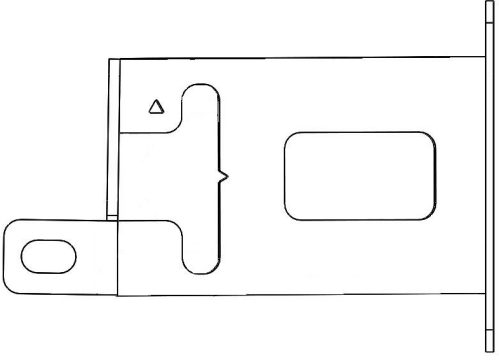
ARROW POINTS TOWARD
 FRONT OF JEEP

JEEP JT INDICATOR

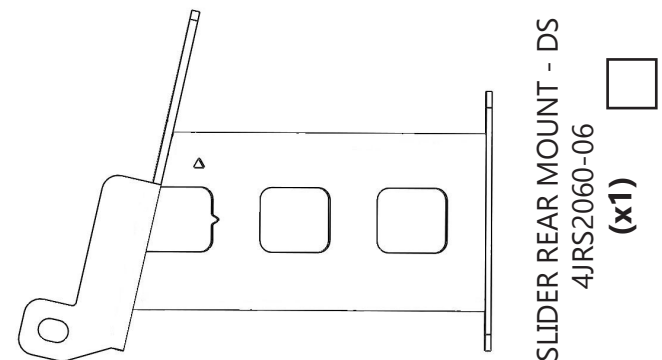
JT SLIDER FRONT MOUNT - DS
 4JRS2060-04
(x1)



JT SLIDER CENTER MOUNT - DS
 4JRS2060-11
(x1)



JT SLIDER REAR MOUNT - DS
 4JRS2060-06
(x1)



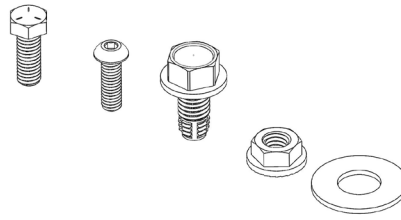


**JT Jeep
DESTROYER SERIES**

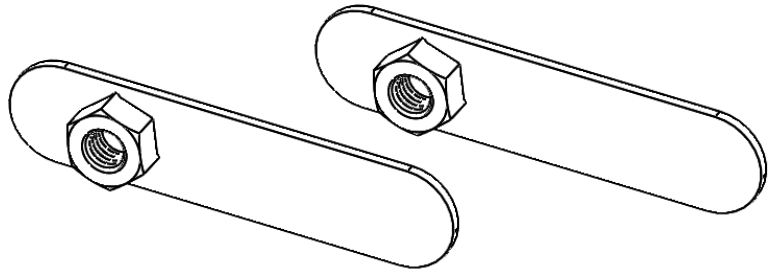
JEEP JT DESTROYER
SLIDERS
HARDWARE KIT

Packaged by:

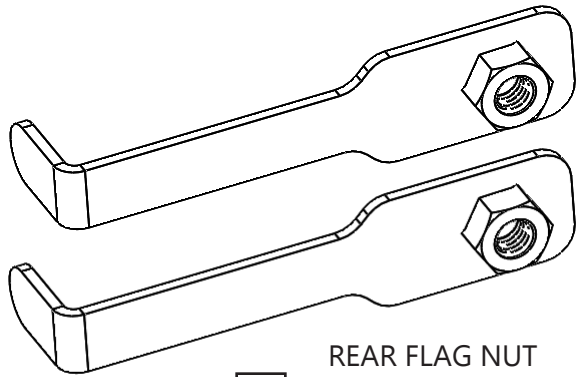
On:



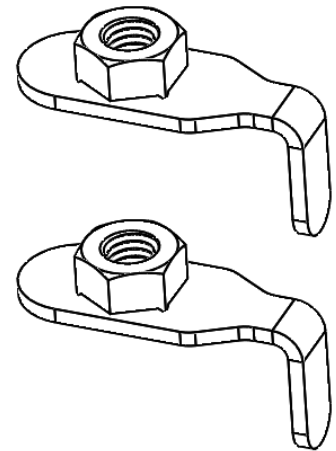
BOLT KIT
JRS2004-BK
(x1)



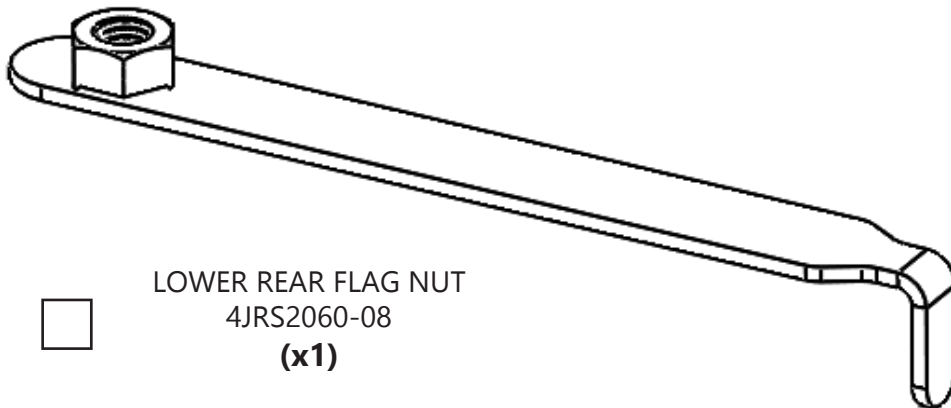
FRONT FLAG NUT
4JRS1860-08
(x2)



REAR FLAG NUT
4JRS2060-07
(x2)

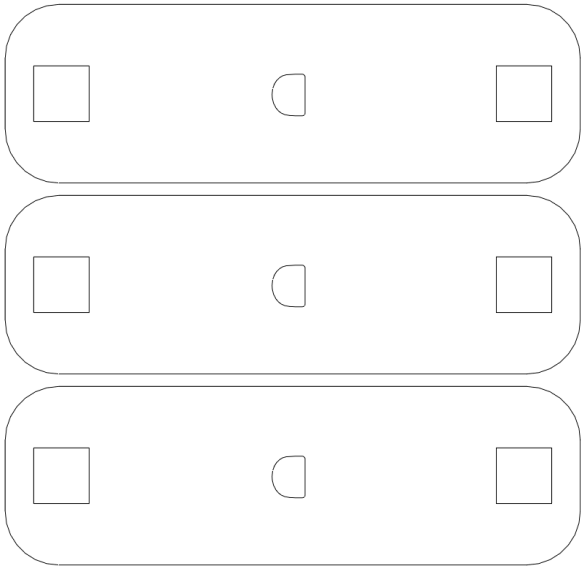



FRONT LOWER FLAG NUT
4JRS1860-07
(x2)

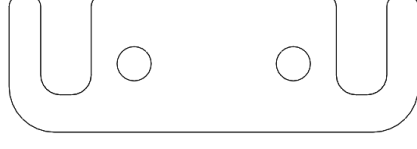
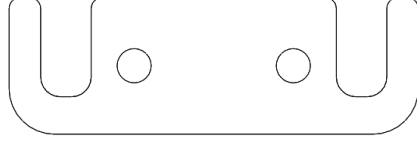
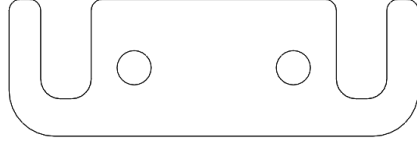
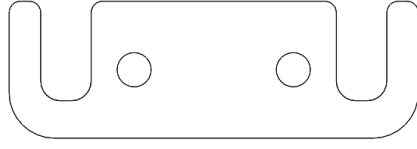
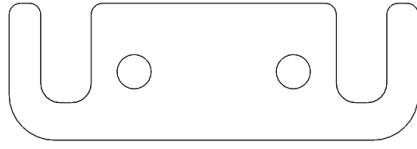
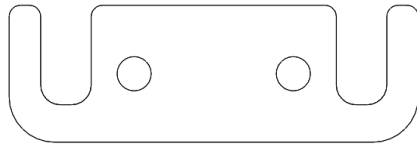
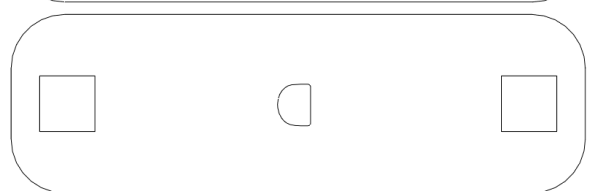
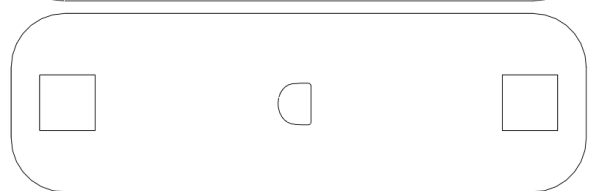
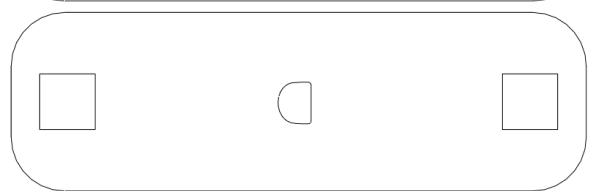
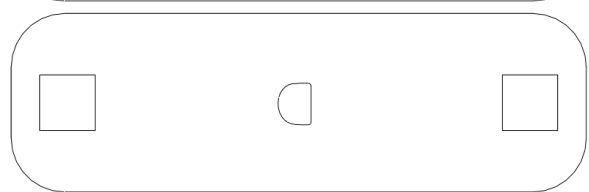
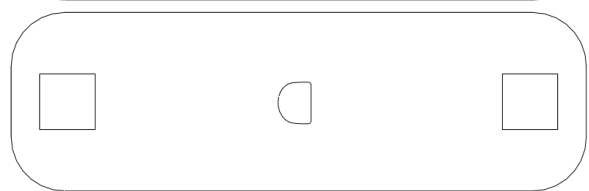
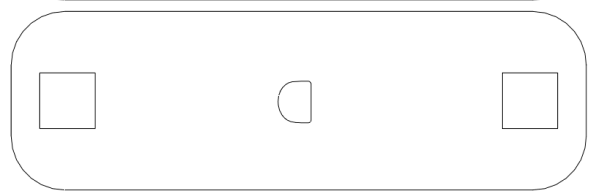
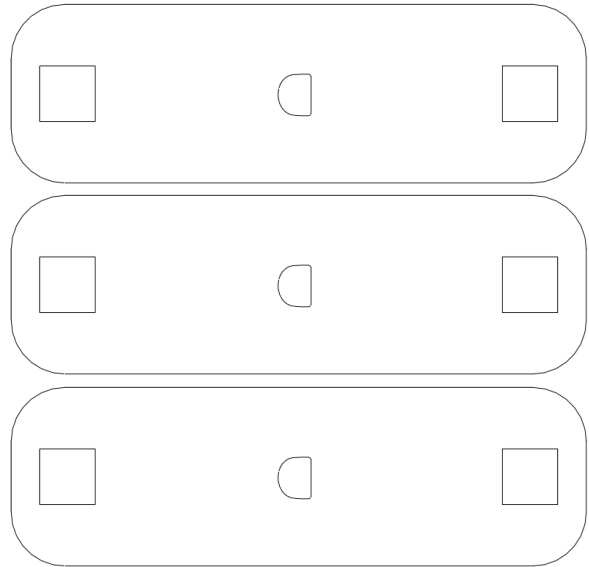



LOWER REAR FLAG NUT
4JRS2060-08
(x1)





DESTROYER DOUBLE
BACKUP PLATE
2BRS2021-41 
(x12)



MOUNT SHIM PLATE
2JRS1860-29 
(x6)

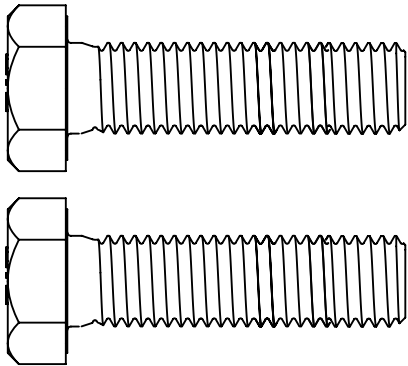


**JT Jeep
DESTROYER SERIES**

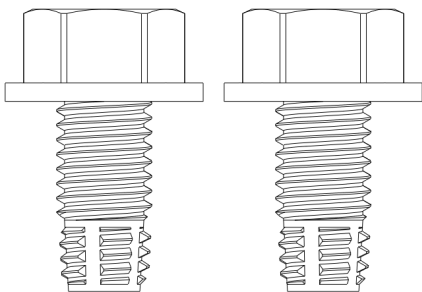
JEEP JT DESTROYER
SLIDERS
BOLT KIT

Packaged by:

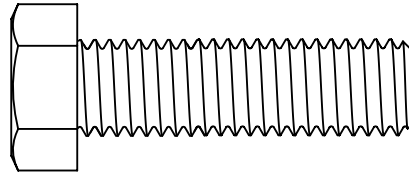
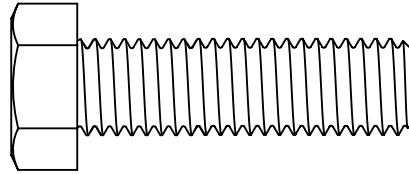
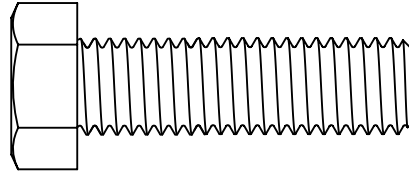
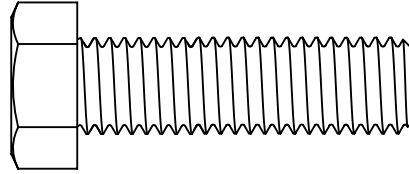
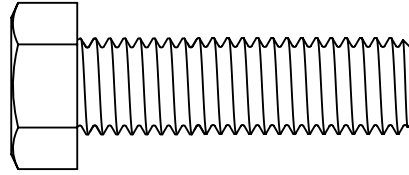
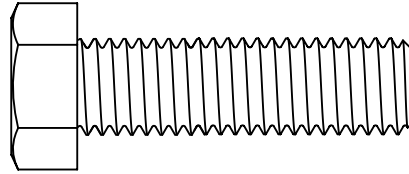
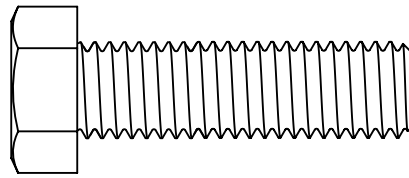
On:



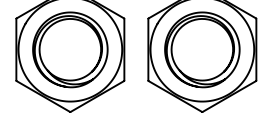
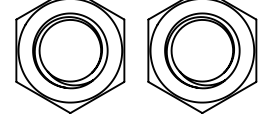
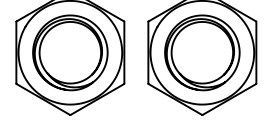
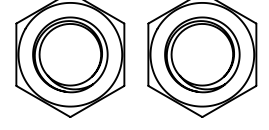
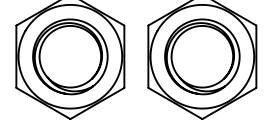
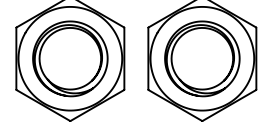
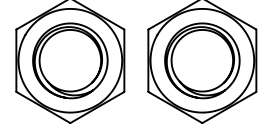
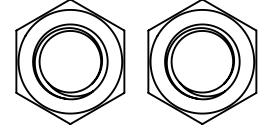
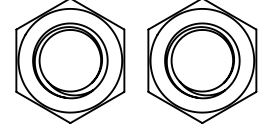
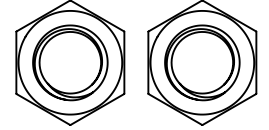
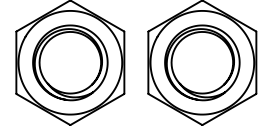
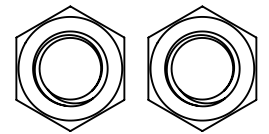
HEX BOLT M12-1.50 X 45MM
(x2)



THREAD ROLLER 1/2-13 X 1.00
(x2)

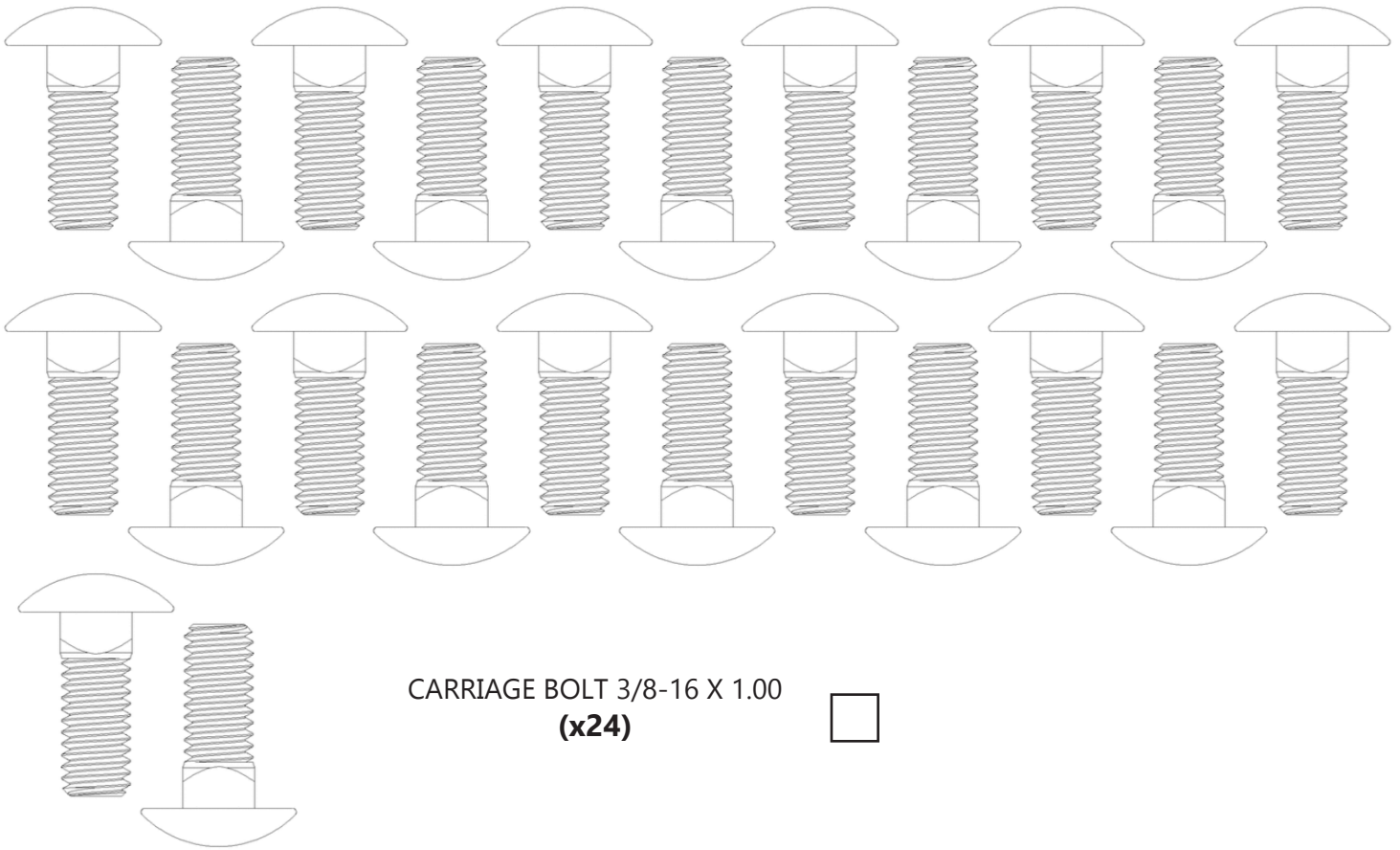


HEX BOLT 1/2-13 X 1.75
(x7)

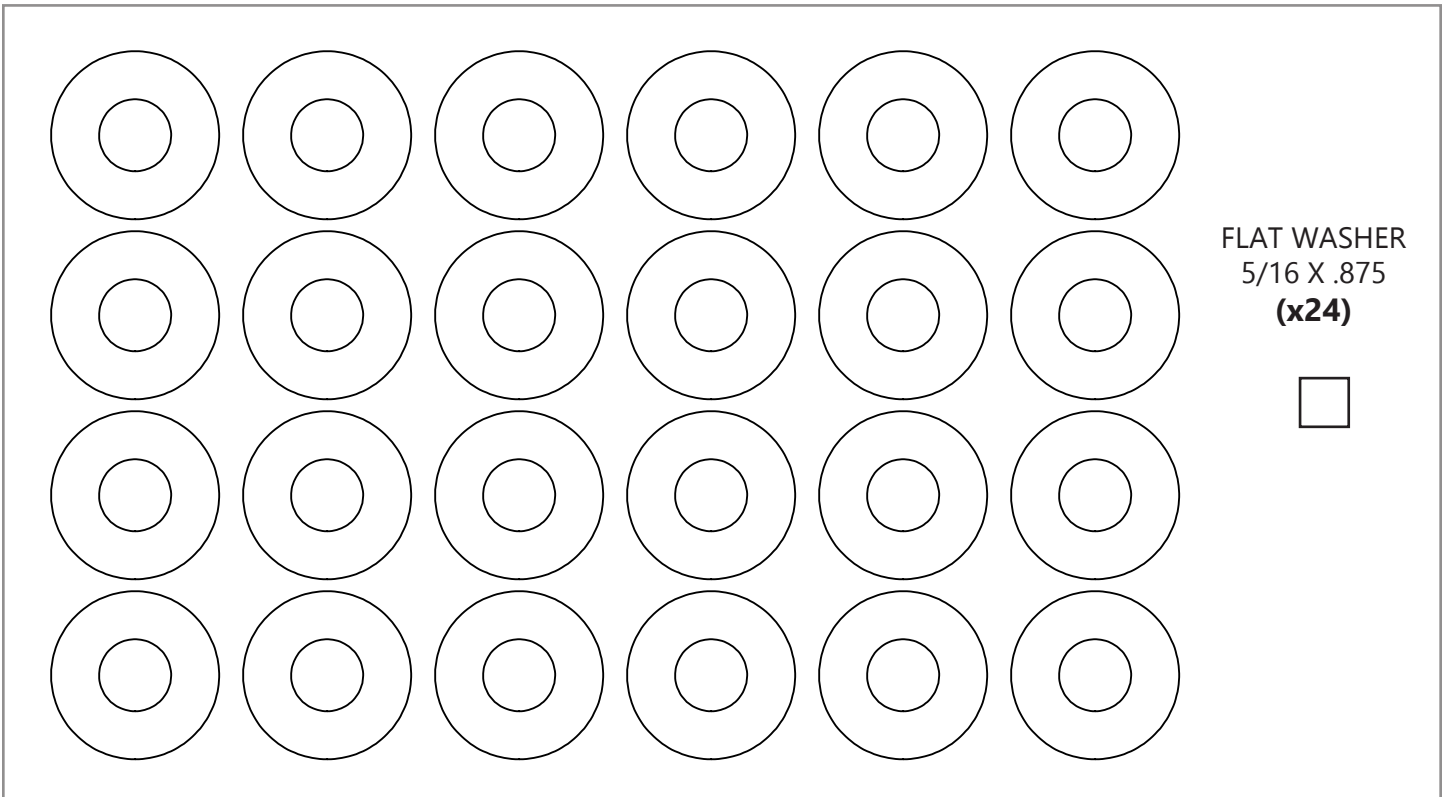


HEX NUT 3/8-16
(x24)



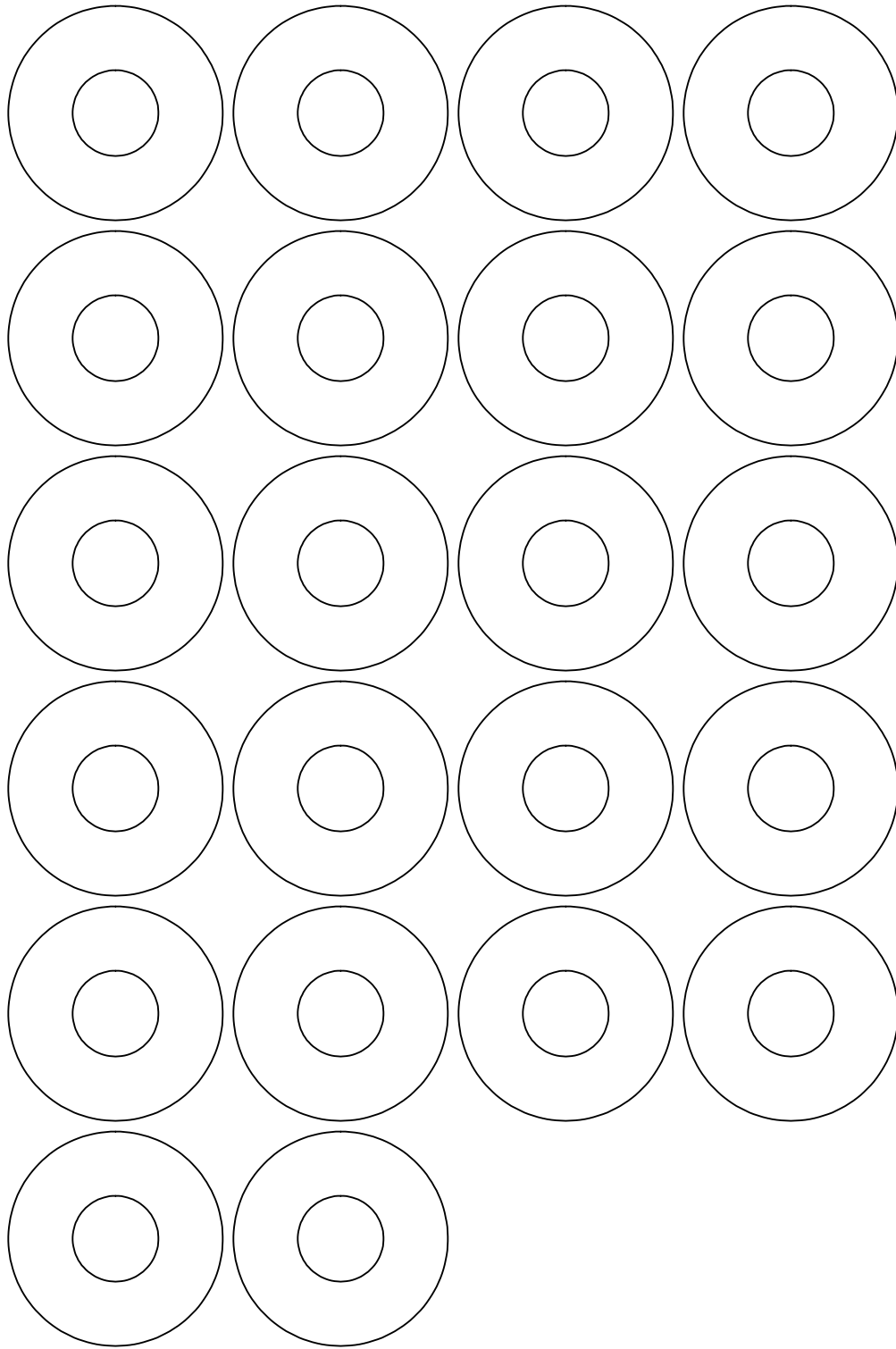


CARRIAGE BOLT 3/8-16 X 1.00
(x24)



FLAT WASHER
5/16 X .875
(x24)





FLAT WASHER
7/16 X 1.25
(x22)