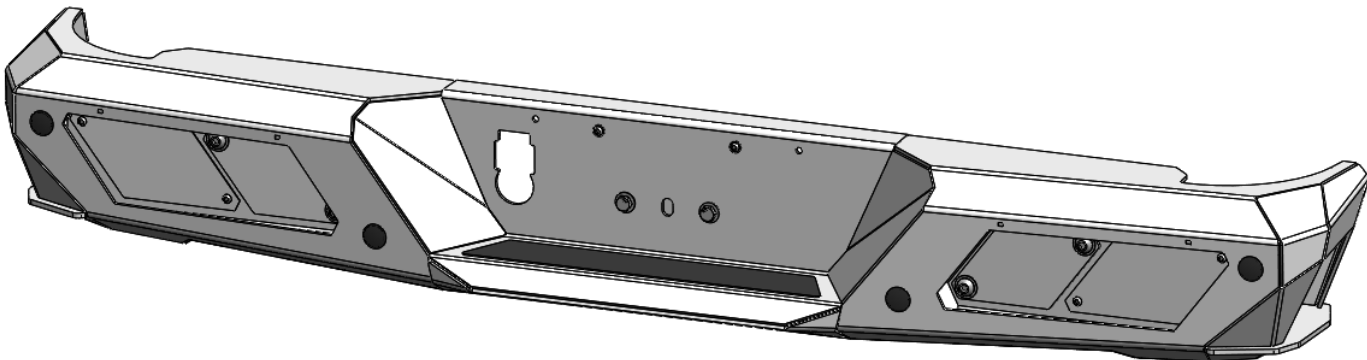




WEB LINK: <http://lodoffroad.com/assets/pdfs/JRS2000 JT REAR BUMPER.pdf>

VERIFY YOU HAVE ALL THE COMPONENTS BEFORE STARTING THE INSTALLATION. REFER TO THE ENGINEERING DRAWINGS AT THE END OF THIS DOCUMENT FOR A COMPLETE PARTS LIST



*****Be sure to read through the entire instructions before starting your installation!*****

Refer to the Engineering drawing included with this document for the correct hardware required at each step of the installation.

Start by removing your rear bumper. Be sure to disconnect your sensor wire harness and trailer harness before removing the bumper.

You will need to remove your trailer plug, and backup sensors from the stock bumper.



To install your trailer plug, due to the thickness of the metal on your LOD bumper you will need to bend the metal clips outward for a snug fit. Use a screwdriver to bend the metal clips.

Do this for both metal clips and test fit the trailer plug in your LOD bumper.



Once you have a snug fit double check to make sure the metal clips are "snapped" in place so the plug will not fall out. You might need to use a screwdriver to bend the clip a little more so that it snaps in.

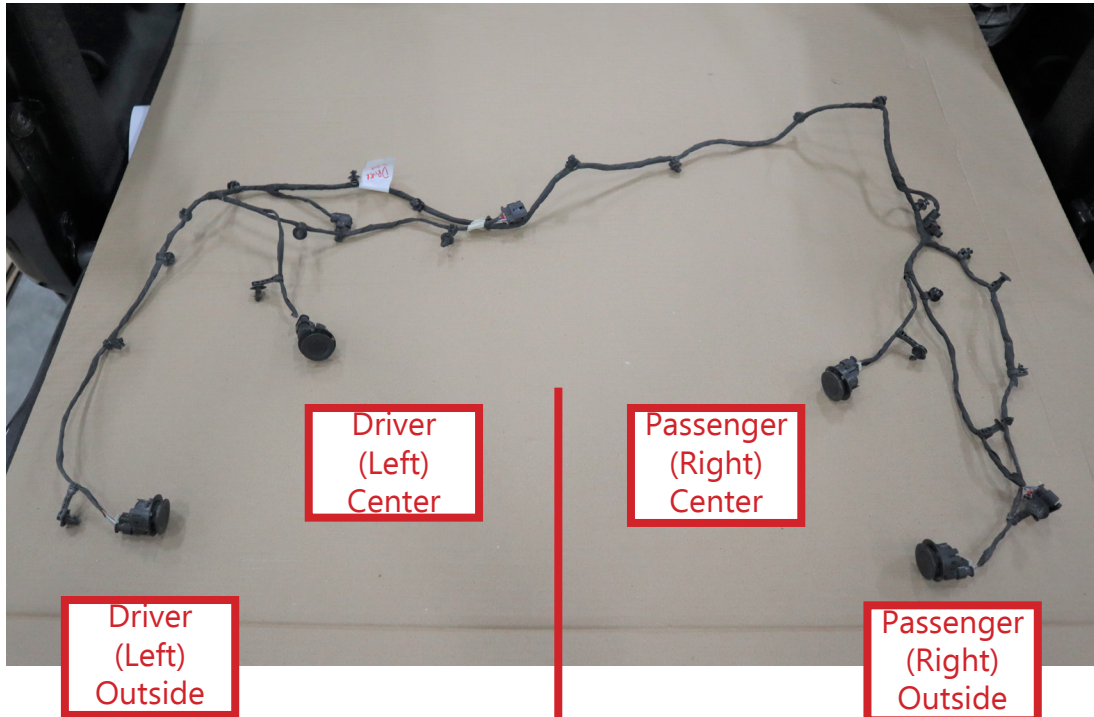


Reverse Sensor Installation

If you do not have reverse sensors, skip these steps and install the provided plastic hole plugs.
The sensors may be installed after your LOD bumper is installed

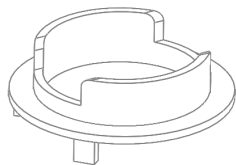
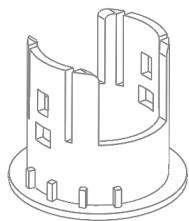
Remove the sensor wiring harness from your stock bumper. It is helpful to label each sensor location on the harness before removing it from the bumper.

We recommend using the following MOPAR mounting brackets and bezels to mount your reverse sensors into your LOD rear bumper. You can purchase these from your local Jeep Dealership or on-line. You will need to order (qty 2 of each) of the four part numbers below.



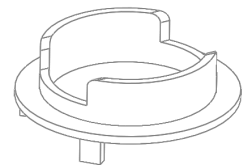
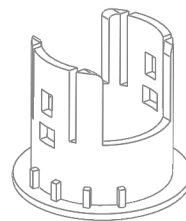
Use for both the Driver Center and Driver Outside position

Use for both the Passenger Center and Passenger Outside position



Sensor Mounting Bracket
(Left Outer)
68341893AA

Park Distance Bezel
(Left Outer)
6UD43RXFAA



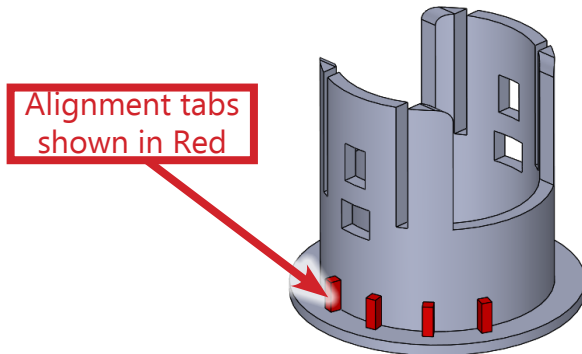
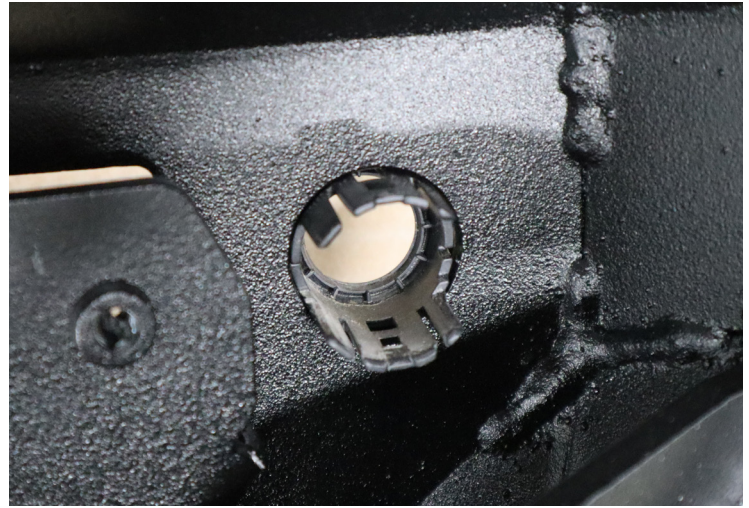
Sensor Mounting Bracket
(Right Outer)
68341892AA

Park Distance Bezel
(Right Outer)
6UD42RXFAA

Use a sharp utility knife or razor blade to trim off all the plastic alignment tabs from the Sensor Mounting Brackets.

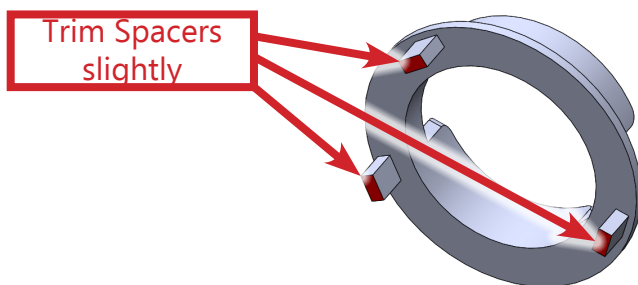
Install the Sensor Mounting Bracket into the bumper as shown.

Be sure you are using the Left Outer Sensor Mounting Bracket for the Driver Side, and the Right Outer Sensor Mounting Bracket for the Passenger Side.

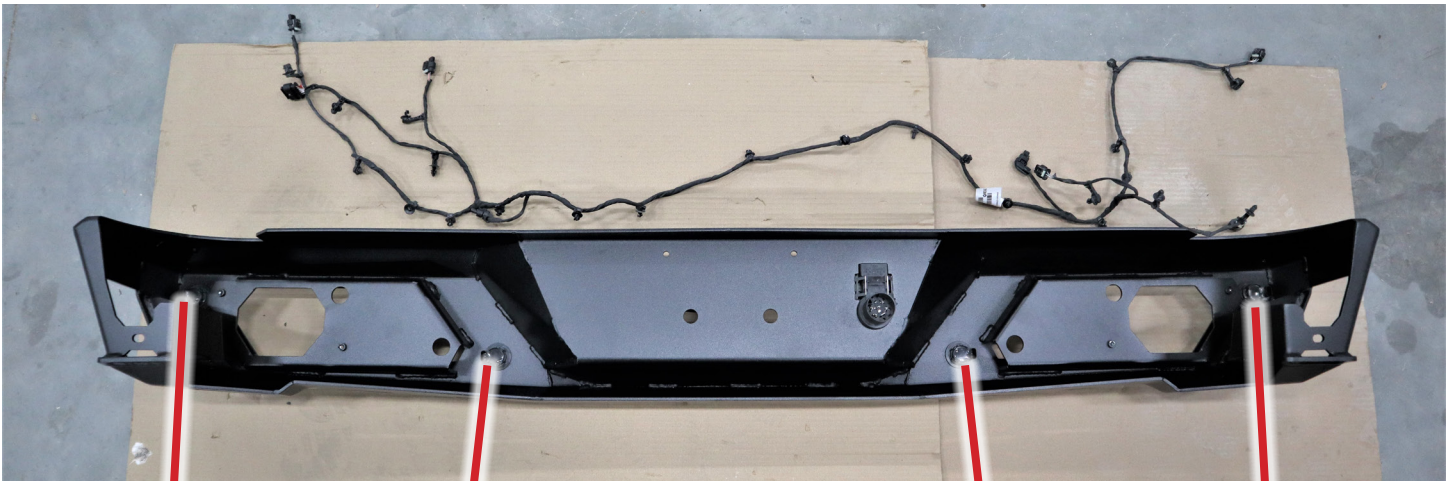


Install the Sensor Bezel as shown. The Sensor Bezel should snap into the Sensor Mounting Bracket from inside the bumper. Due to the thickness of the LOD bumper, if it doesn't snap in, you might need to trim the plastic spacers slightly.

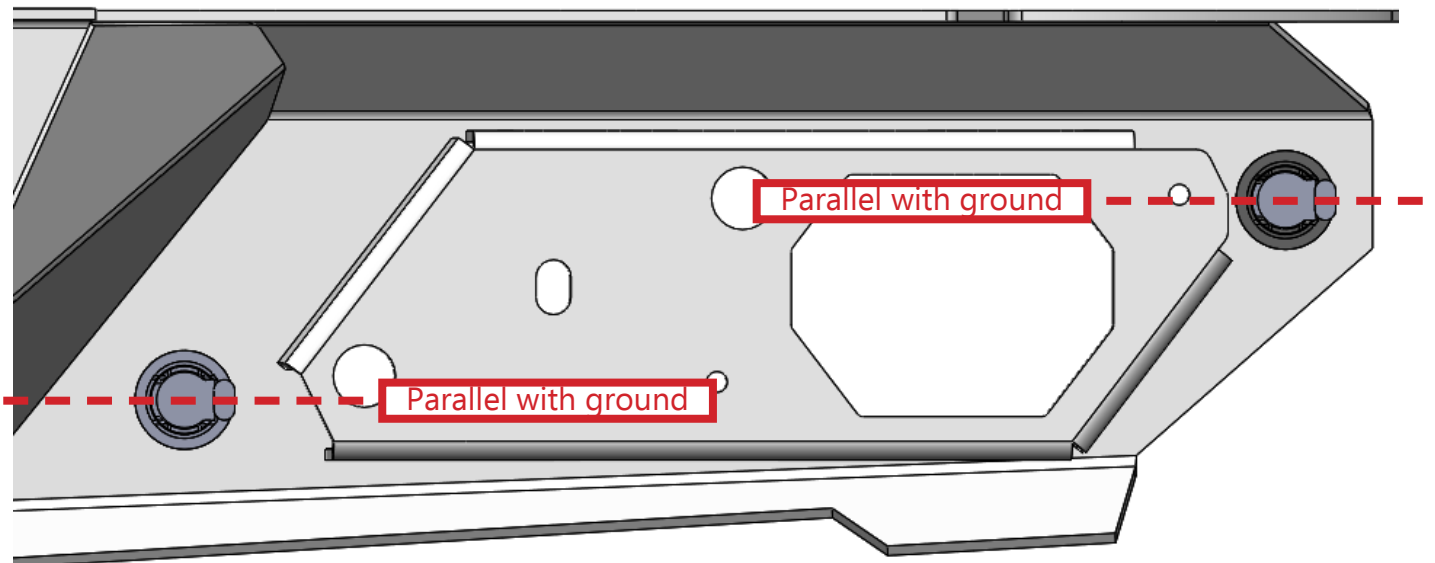
Be sure you are using the Left Outer Sensor Bezel for the Driver Side, and the Right Outer Sensor Bezel for the Passenger Side.



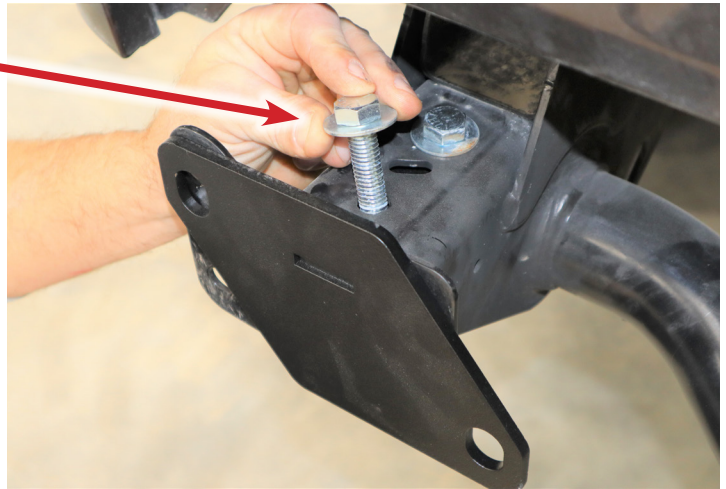
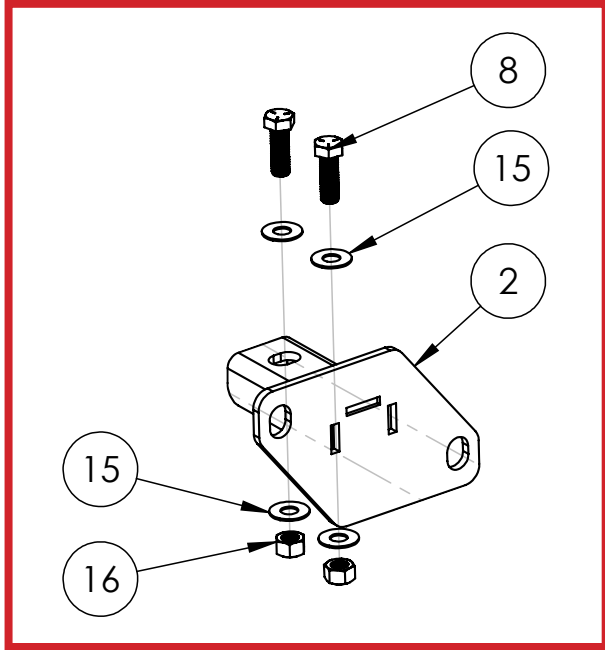
Repeat this process for all four sensor holes making sure to use the Left Outer Sensor Mounting Bracket and Bezel for the two Driver Side Sensors, and use the Right Outer Sensor Mounting Bracket and Bezel for the two Passenger Side Sensors.



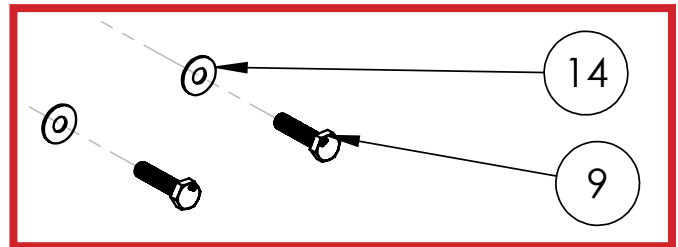
Install the four reverse sensors as shown. For best results the sensor should be rotated so the connector is orientated towards the outside of the bumper and parallel with the ground. After all of the sensors are installed, you may plug in your factory sensor wire harness.



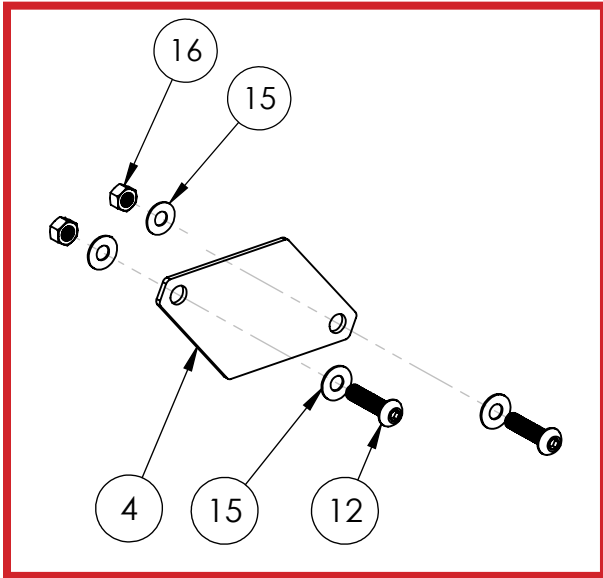
Install the driver side and passenger side JT Rear Frame Mounts as shown using 1/2" Hex Bolts, Washers and Nuts and tighten securely.



Gently place the bumper into position as shown below resting on the hitch. Use the M10 Hex Bolt and Washers to loosely secure the bumper in place.

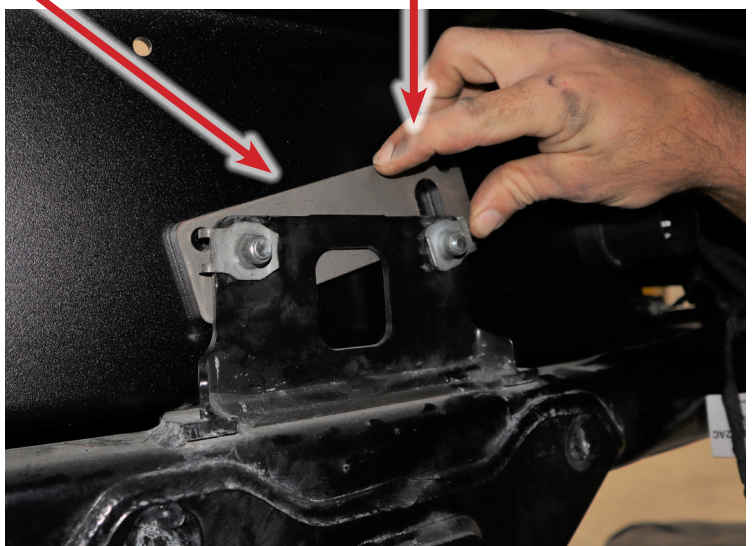


Install the Mount Face Plate or D-Ring Mounts as shown using the 1/2" Button Head Bolts, Washers and Nuts. Leave these bolts loose for final adjustments.

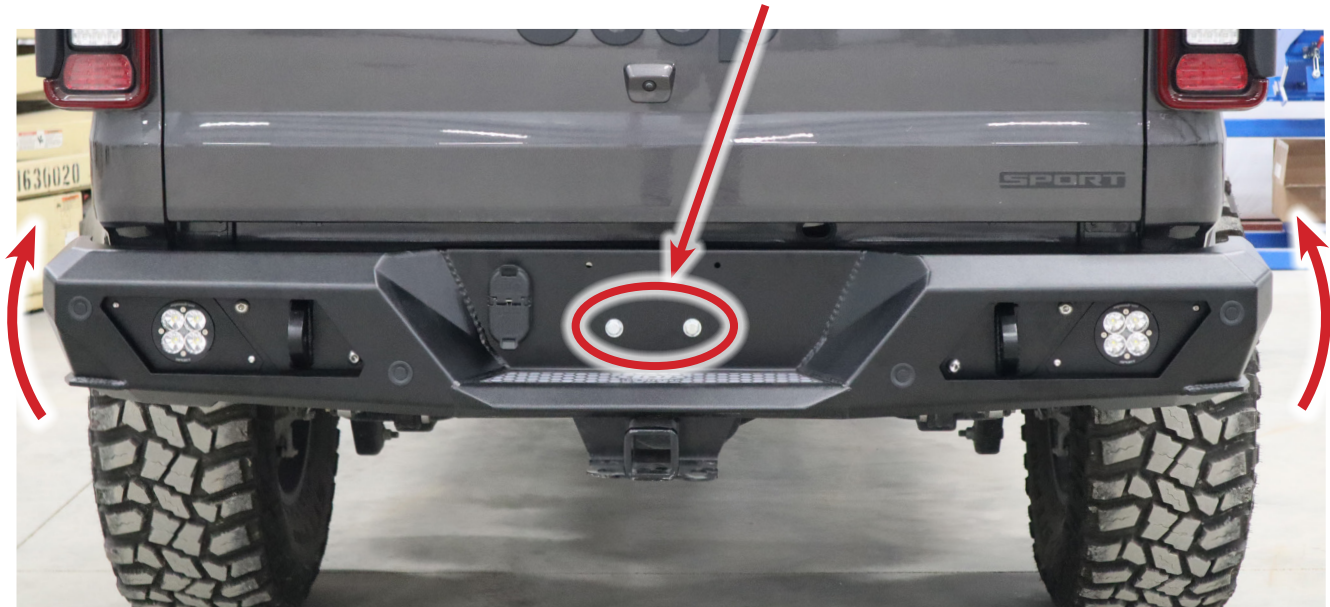


Install the Center Spacer as shown. The Center Spacer is mounted **BETWEEN** the bumper and the hitch plate. With all the bumper mounting bolts loose, the Center Spacer will slide down into position.

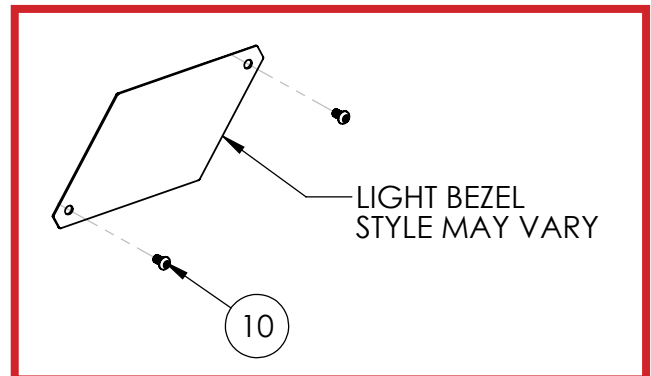
Install the Center Spacer from behind the bumper, between the bumper and hitch plate.



Adjust the position of the bumper so that its level with the Jeep by slightly tilting the ends of the bumper up or down. Securely tighten the two center mounting bolts.



Install your Light Bezels as shown using the 1/4" Button Head Screws and tighten securely.



Align the Mount Face Plate or D-Ring Mount so that it is straight and parallel with the bumper cutout and light bezel. Tighten Securely.



****Maintenance****

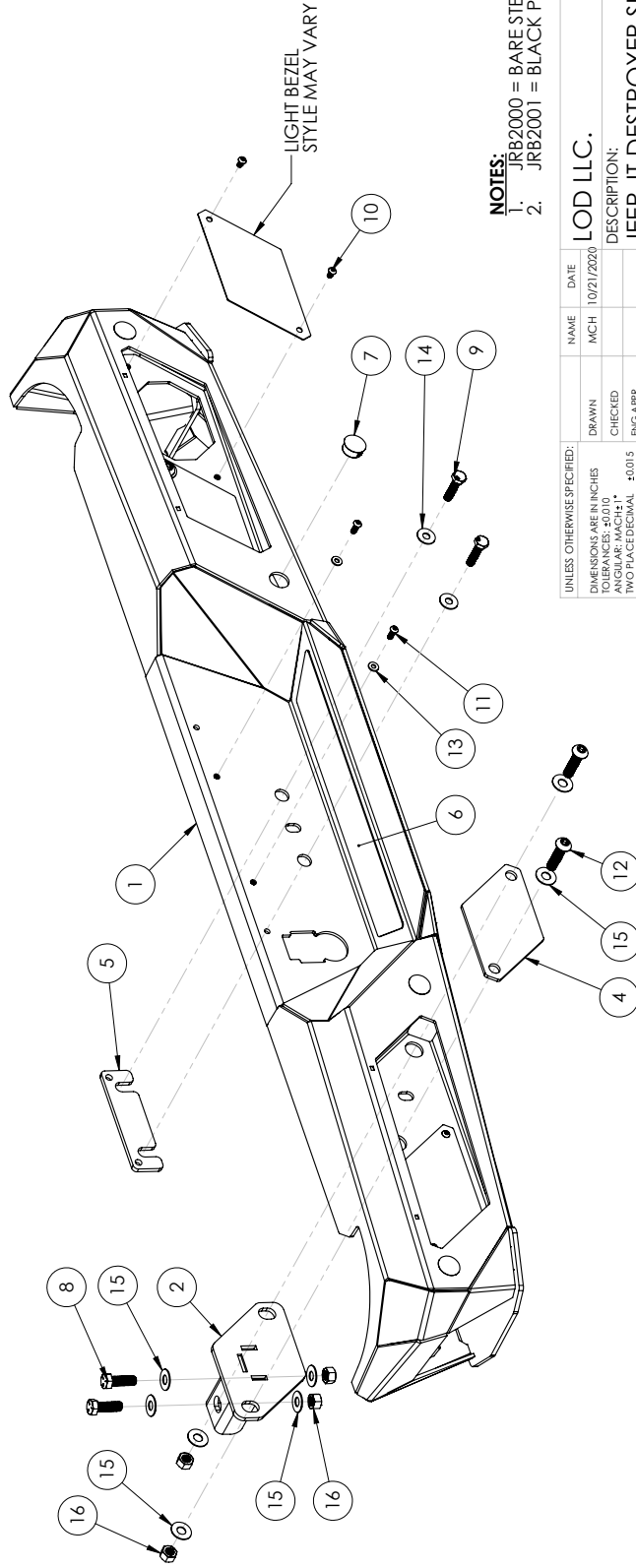
- Periodically check and re-tighten all fasteners.
- Periodically check your bumper for scratches or dings which can happen over time or after heavy use or highway driving. It is important to address these areas as soon as possible to prevent flaking and corrosion or rust from spreading. We recommend using Rustoleum® brand Black Semi-Gloss Protective Enamel (oil based). Remove loose powder coating, sand the area and clean using alcohol. Apply using a foam brush by dabbing to match the powder coat texture.



ITEM NO.	PART NUMBER	DESCRIPTION	QTY.
1	4JRB2000-07	JT REAR BUMPER WELDMENT	1
2	4JRB2000-03	JT REAR FRAME MOUNT - DS	1
3	4JRB2000-04	JT REAR FRAME MOUNT - PS	1
4	2JRB2000-39	MOUNT FACE PLATE	2
5	2JRB2000-30	CENTER SPACER	1
6	2JRS1860-04	FRONT LOGO GRIP TAPE	1

HARDWARE

ITEM NO.	PART NUMBER	DESCRIPTION	QTY.
7	HP1004	HOLE PLUG Ø1.125"	4
8	HB501324ZPGR5	HEX BOLT 1/2-13 X 1.50 HEX BOLT ZINC PLATE GR5	4
9	HB10150M45ZPC188	HEX BOLT M10-1.50 x 45mm ZINC PLATE CL8.8	2
10	BHSCS252008SS	BHSCS 1/4-20 X 0.50 STAINLESS STEEL	4
11	BHSCS252012ZP	BHSCS 1/4-20 X .75 ZINC PLATE	2
12	BHSCS501332SS	BHSCS 1/2-13 X 2.00 STAINLESS STEEL	4
13	FW1209ZP	FLAT WASHER #12 X .56" ZINC PLATED	2
14	FW3816ZP	FLAT WASHER Ø3/8" X 1.00 ZINC PLATE	2
15	FW4318ZP	FLAT WASHER Ø7/16 X 1.25" ZINC PLATED	16
16	HN5013ZPGR5	HEX NUT 1/2-13 ZINC PLATE GR5	8



NOTES:
 1. JRB2000 = BARE STEEL OPTION
 2. JRB2001 = BLACK POWDER COAT

UNLESS OTHERWISE SPECIFIED:		NAME	DATE
DIMENSIONS ARE IN INCHES		MCH	10/21/2020
TOLERANCES ±0.010	DRAWN		
ANGULAR: MACH 1°	CHECKED		
TWO PLACE DECIMAL	ENG APPR.		
THREE PLACE DECIMAL	MFG APPR.		
PROPRIETARY AND CONFIDENTIAL		MATERIAL:	
THE INFORMATION CONTAINED IN THIS DRAWING IS THE SOLE PROPERTY OF LOD LLC. ANY REPRODUCTION OR TRANSMISSION OF THIS DRAWING IN ANY MANNER WITHOUT THE WRITTEN PERMISSION OF LOD LLC IS PROHIBITED.		N/A	
SEE NOTES		DWG. NO. JRB2000	
		JRB2001	
		REV A	
		SCALE: 1:6	
		SHEET SIZE: B	
		SHEET 1 OF 1	



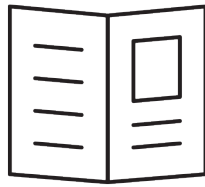
DESCRIPTION:
JEEP JT DESTROYER SERIES REAR BUMPER



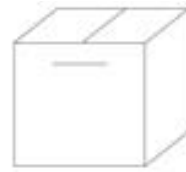
JT Jeep
DESTROYER SERIES
JEEP JT REAR BUMPER
SHIPPING SHEET

Packaged by:

On:



Instruction
Booklet



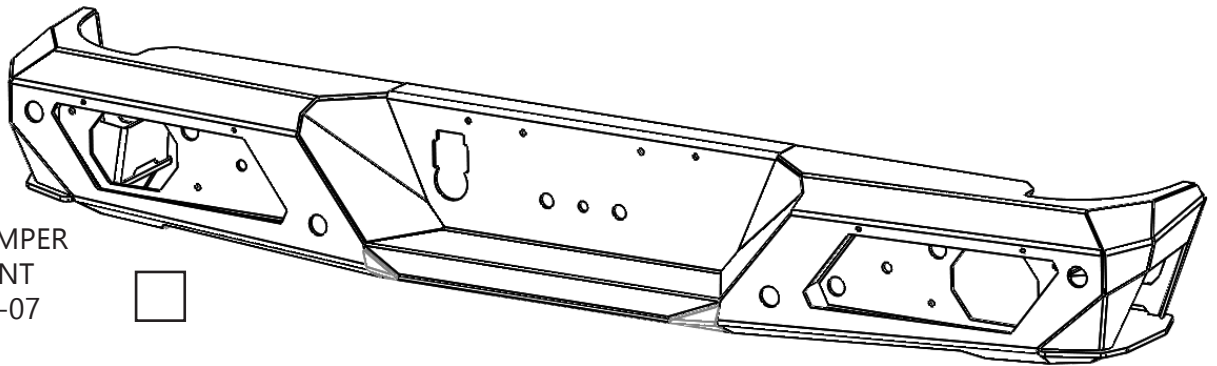
Hardware Kit
(contents
may vary)



LOGO GRIP TAPE
 2JRS1860-04
(x1)



(Installed on bumper)

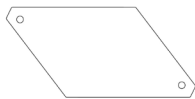


JT REAR BUMPER
 WELDMENT
 4JRB2000-07
(x1)

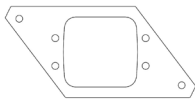


Destroyer Light Bezels

(STYLE MAY VARY, ONLY ONE SET INCLUDED)



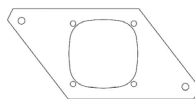
Blank / No light
JLB1851



Universal
Flush Mount
Cube
JLB1821



Rigid Pro-Series
Dually
JLB1841



Baja Designs
Squadron
Flush Mount
JLB1863



Baja Designs
Squadron
JLB1865



Baja Designs
Squadron
Round
JLB1867



LoD Radiant
Pro LED Surface
Mount
JLB1869

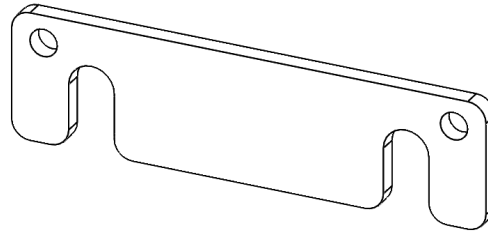
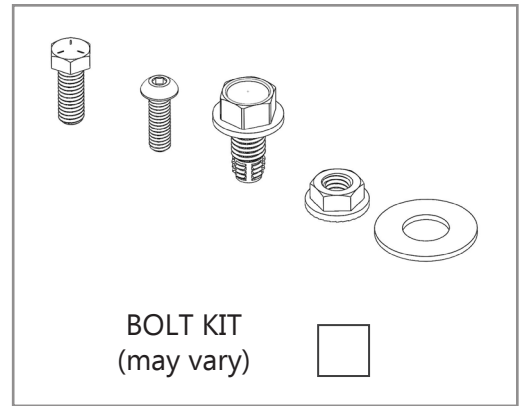




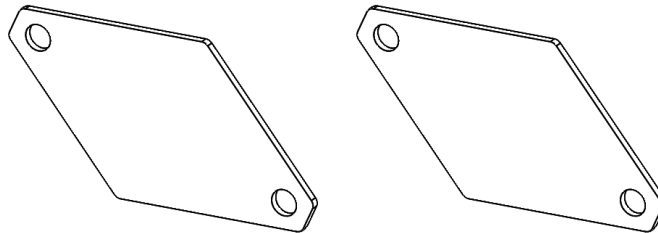
JT Jeep
DESTROYER SERIES
 JEEP JT REAR BUMPER
 HARDWARE KIT

Packaged by:

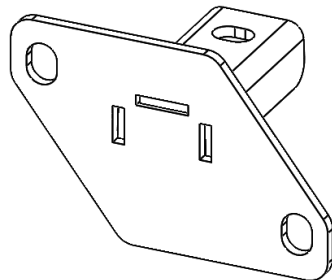
On:



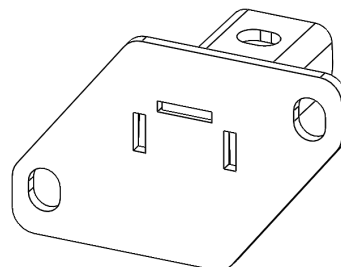
CENTER SPACER
 2JRB2000-30
(x1)



MOUNT FACE PLATE
 2JRB2000-39
(x2)



JT REAR FRAME MOUNT - DS
 4JRB2000-03
(x1)



JT REAR FRAME MOUNT - PS
 4JRB2000-04
(x1)

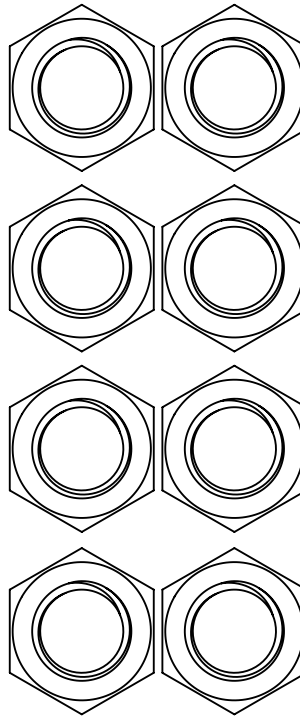




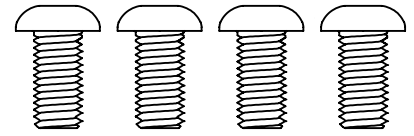
JT Jeep
DESTROYER SERIES
 JEEP JT REAR BUMPER
 BOLT KIT

Packaged by:

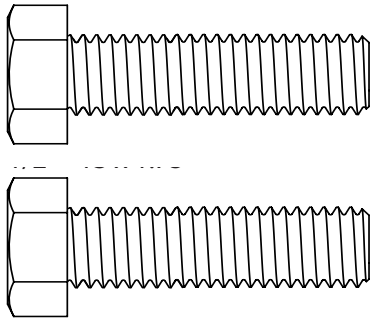
On:



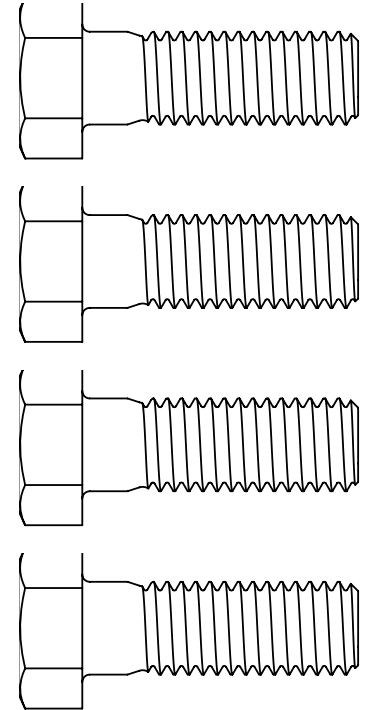
HEX NUT 1/2-13
(x8)



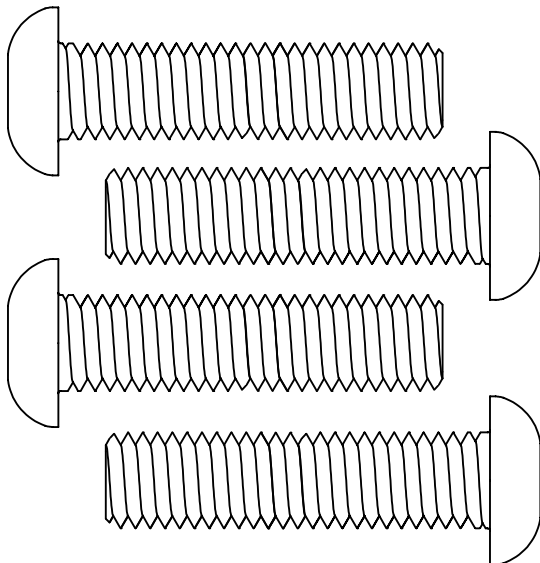
BUTTON HEAD SCREW
 1/4-20 X 1/2" LG
 STAINLESS STEEL
(x4)



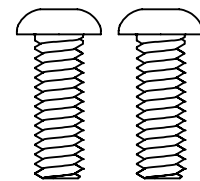
HEX BOLT M10-1.5MM X
 45MM LG
(x2)



HEX BOLT 1/2-13 X 1.5" LG
(x4)

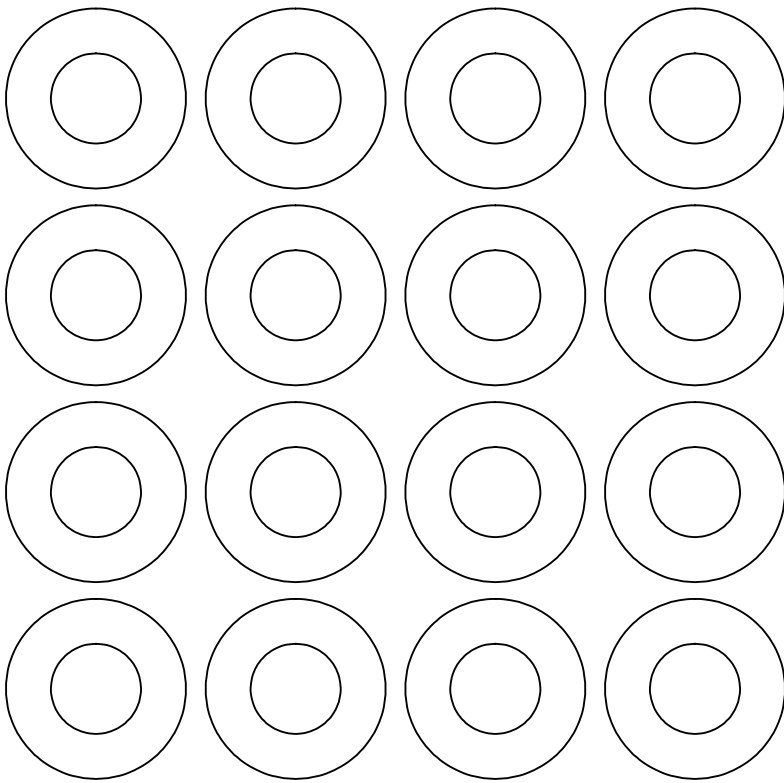


BUTTON HEAD SCREW
 1/2-13 X 2.00" LG
 STAINLESS STEEL
(x4)

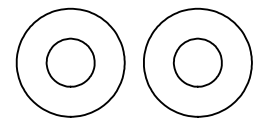


BUTTON HEAD SCREW
 1/4-20 X 3/4" LG
(x2)

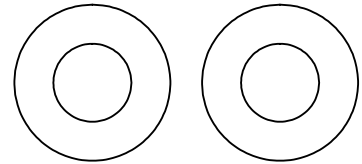




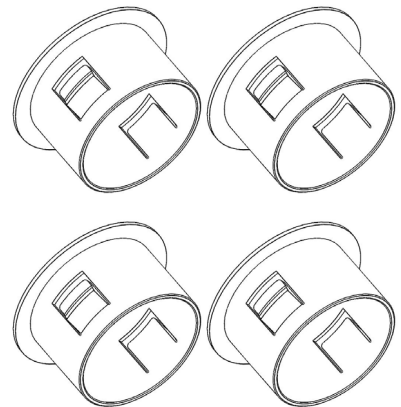
FLAT WASHER
Ø7/16 X 1.25
(x16)



FLAT WASHER
#12 X .56
(x2)



FLAT WASHER
Ø3/8 X 1.00
(x2)



HOLE PLUG Ø1.125"
HP1004
(x4)

