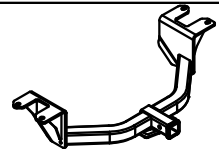




Class III Receiver Hitch Part No. 69627C



Fits: CHEVROLET SILVERADO 1500 / GMC SIERRA 1500



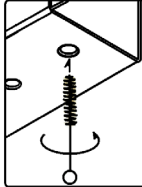
GROSS LOAD CAPACITY WHEN USED AS A WEIGHT CARRYING HITCH: 6,000 LBS. TRAILER WEIGHT & 600 LBS. TONGUE WEIGHT.
GROSS LOAD CAPACITY WHEN USED AS A WEIGHT DISTRIBUTION HITCH: 10,000 LBS. TRAILER WEIGHT & 1,000 LBS. TONGUE WEIGHT.



WARNING: * DO NOT EXCEED VEHICLE MANUFACTURER'S RECOMMENDED TOWING CAPACITY. *****

TOOLS REQUIRED

10mm, 15mm, 21mm, 7/8" Socket
Ratchet
6" Extension
Torque Wrench



WELDNUT CLEANING

To remove debris from weldnuts in frame, spray lubricant or compressed air into hole. For heavy debris, use a small wire brush. (Be careful not to damage threads).



HITCH WEIGHT: 53 LBS.

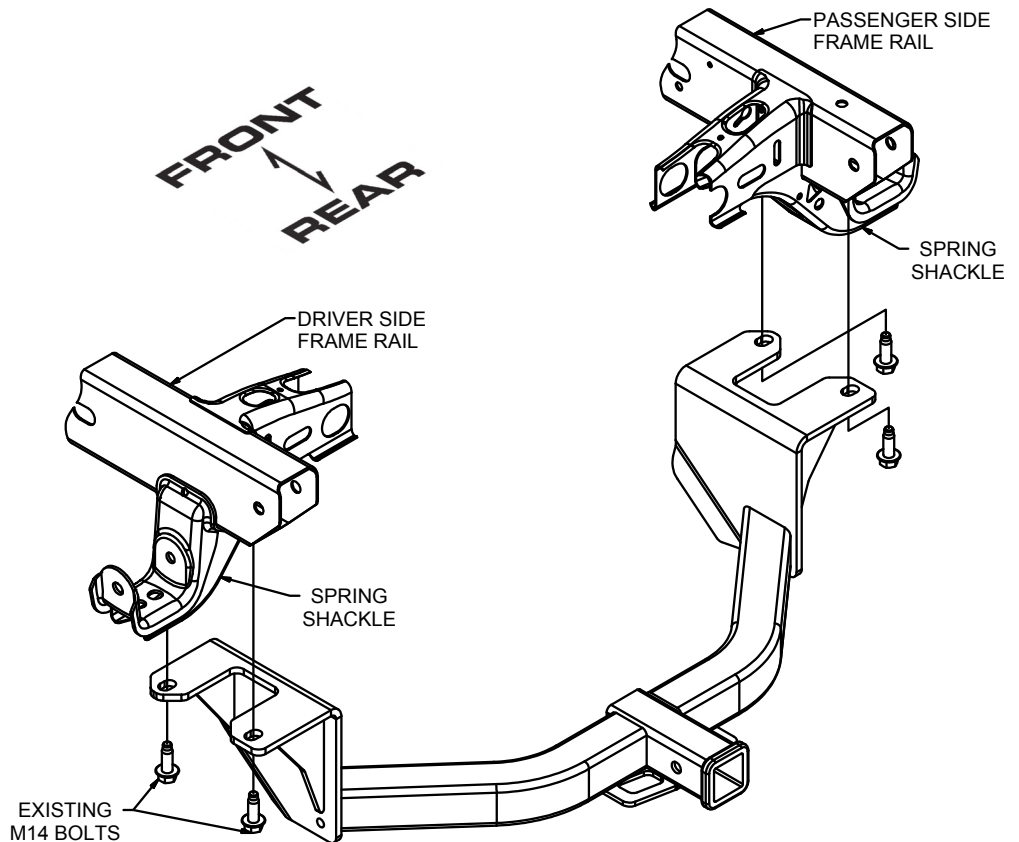
INSTALL TIME

PROFESSIONAL: 60 MINUTES

NOVICE (DIY): 110 MINUTES

INSTALL NOTES:

- NO TRIMMING REQUIRED
- NO DRILLING REQUIRED
- MAY NEED TO LOWER EXHAUST



INSTALLATION STEPS

Note: Some models may require adjustment to the factory safety chain loops to provide clearance for the hitch pin. Using an adjustable wrench, bend the loops upward as needed. (see photo above)

Vehicles with Single Exhaust System

1. Remove the (2) existing hex bolts from the frame on both sides of the vehicle.
2. Raise hitch into position, loosely secure the side plates to the frame using the factory hardware.
3. Torque the factory hardware to 126 ft-lbs.

Vehicles with Dual Exhaust System

1. Using a 15mm socket, remove the exhaust hanger bracket on the driver side. Remove the passenger side exhaust hanger bracket hardware but leave the bracket on the exhaust hanger.
2. Using a 10mm socket, locate and remove the (3) hex bolts securing the driver side exhaust bezel. Save for reinstallation.
3. Remove the (2) existing hex bolts from the frame on both sides of the vehicle.
4. Raise hitch into position, loosely secure the side plates to the frame using the factory hardware. Move the exhaust out of the way if necessary.
5. Torque the factory hardware to 126 ft-lbs.
6. Re-install exhaust hanger brackets removed in step 1 and bezel removed in step 2.

PERIODICALLY CHECK THIS RECEIVER HITCH TO ENSURE THAT ALL FASTENERS ARE TIGHT AND THAT ALL STRUCTURAL COMPONENTS ARE SOUND.

Keystone Automotive Operations Inc., warrants this product to be free of defects in material and/or workmanship at the time of retail purchase by the original purchaser. If the product is found to be defective, Keystone Automotive Operations Inc., may repair or replace the product, at their option, when the product is returned, prepaid, with proof of purchase. Alteration to, misuse of, or improper installation of this product voids the warranty. Keystone Automotive Operations Inc.'s liability is limited to repair or replacement of products found to be defective, and specifically excludes liability for incidental or consequential loss or damage. This product complies with safety specifications and requirements for connecting devices and towing systems of the state of New York, V.E.S.C. Regulation V-5 and SAE J684. For Technical & Warranty Support: 1-877-544-4449 Fax: 1-855-242-8922 www.huskytow.com

5/16/2019