

# INSTALLATION MANUAL

**69621C**

## Level of Difficulty

Easy

Installation difficulty levels are based on time and effort involved and may vary depending on the installer level of expertise, condition of the vehicle and proper tools and equipment.

## Weight Carrying Capacity

|                            |            |
|----------------------------|------------|
| Gross trailer weight (GTW) | 4,000 lbs. |
| Tongue weight (TW)         | 400 lbs.   |

## Weight Distribution Capacity

|                          |            |
|--------------------------|------------|
| Weight distribution (WD) | 5,000 lbs. |
| WD tongue weight (WDTW)  | 500 lbs.   |

## Parts List

| Item | Qty | Description                              |
|------|-----|--|
| 1    | 4   | Hex bolt, M12-1.75 x 40mm, CL10.9        |
| 2    | 4   | Conical-toothed washer, 1/2"             |
| 3    | 1   | Fishwire, 1/2"                           |
| 4    | 1   | Serrated-flange nut, 1/2"-13             |
| 5    | 1   | Square-hole spacer, 1/4" x 1" x 2-1/2"   |
| 6    | 1   | Carriage bolt, 1/2"-13 x 1-1/2", grade 8 |
| 7    | 4   | Flat washer, 7/16"                       |
| 8    | 2   | Nylock nut, 7/16"-14                     |
| 9    | 2   | Hex bolt, 7/16"-14 x 2-1/2", grade 8     |

## Tools Required

|                      |                |
|----------------------|----------------|
| Ratchet              | Torque wrench  |
| Socket extension, 6" | Socket, 18mm   |
| Socket, 3/4"         | Socket, 19mm   |
| Socket, 5/8"         | Safety glasses |

## ⚠ WARNING

Never exceed the vehicle manufacturer's recommended towing capacity.

## Product Photo



## NOTICE

Before you begin installation, read all instructions thoroughly.

Proper tools will improve the quality of installation and reduce the time required.

This installation requires lowering of the exhaust and the use of fishwire to install hardware. No drilling is required.

Periodic inspection of the trailer hitch should be performed to ensure all mounting hardware remains tight and structural components are secure.

To help prevent damage to the product or vehicle, refer to the specified torque specifications when securing hardware during the installation process.

## SAFETY INSTRUCTIONS

Safety glasses should be worn at all times while installing this product.

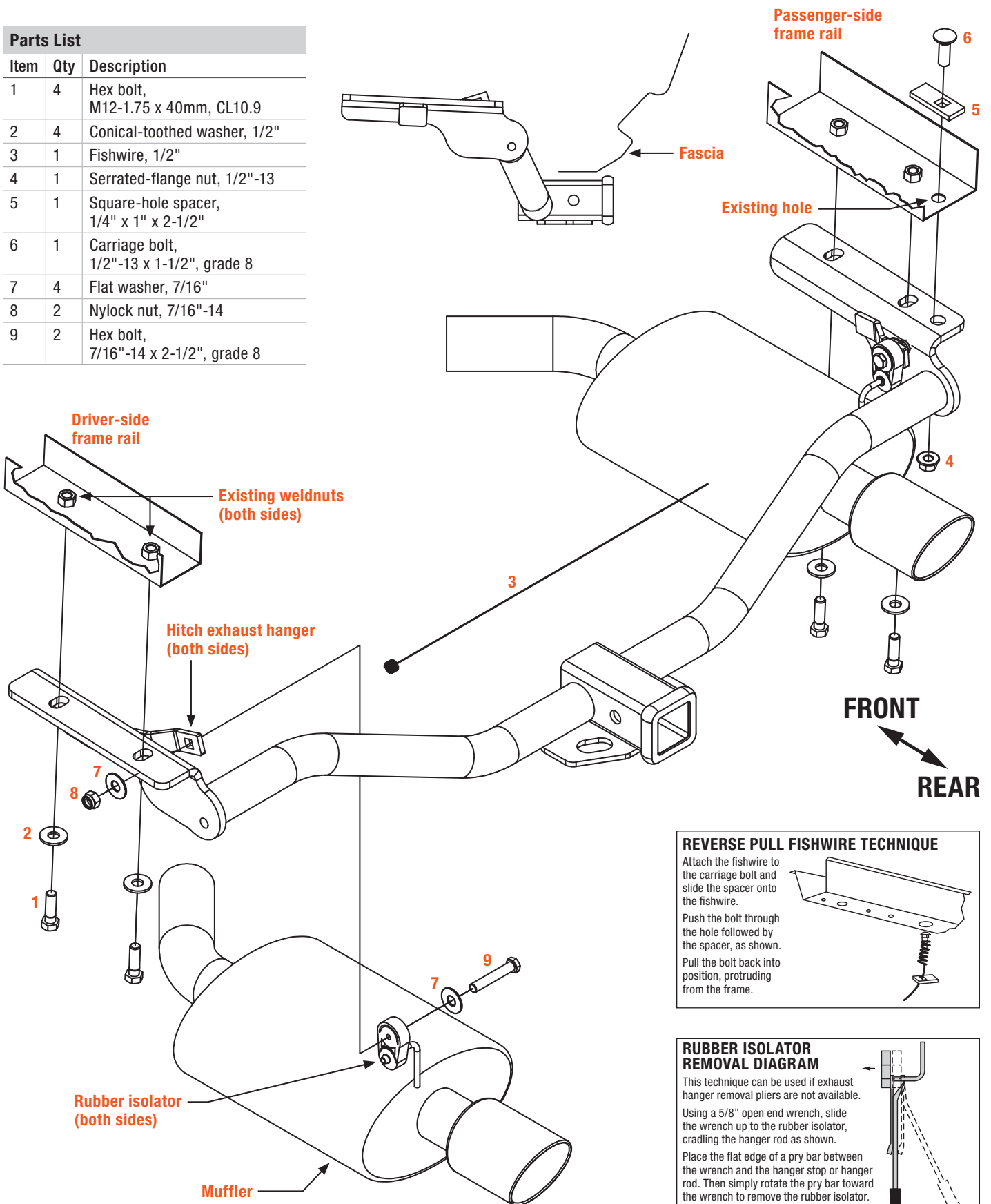
## Warranty Information

Our products are backed by industry-leading warranties. For a copy of the product warranties or to provide feedback, please contact our support line using the phone number at the bottom of this document.

# ASSEMBLY

## Parts List

| Item | Qty | Description                              |
|------|-----|--|
| 1    | 4   | Hex bolt, M12-1.75 x 40mm, CL10.9        |
| 2    | 4   | Conical-toothed washer, 1/2"             |
| 3    | 1   | Fishwire, 1/2"                           |
| 4    | 1   | Serrated-flange nut, 1/2"-13             |
| 5    | 1   | Square-hole spacer, 1/4" x 1" x 2-1/2"   |
| 6    | 1   | Carriage bolt, 1/2"-13 x 1-1/2", grade 8 |
| 7    | 4   | Flat washer, 7/16"                       |
| 8    | 2   | Nylock nut, 7/16"-14                     |
| 9    | 2   | Hex bolt, 7/16"-14 x 2-1/2", grade 8     |

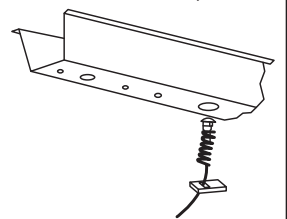


### REVERSE PULL FISHWIRE TECHNIQUE

Attach the fishwire to the carriage bolt and slide the spacer onto the fishwire.

Push the bolt through the hole followed by the spacer, as shown.

Pull the bolt back into position, protruding from the frame.



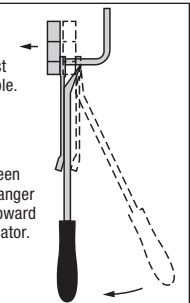
### RUBBER ISOLATOR REMOVAL DIAGRAM

This technique can be used if exhaust hanger removal pliers are not available.

Using a 5/8" open end wrench, slide the wrench up to the rubber isolator, cradling the hanger rod as shown.

Place the flat edge of a pry bar between the wrench and the hanger stop or hanger rod. Then simply rotate the pry bar toward the wrench to remove the rubber isolator.

**Note:** Using a lubricant or soapy water on the hanger rod and the rubber isolator helps removal.



### Step 1

Remove three rubber isolators to lower the exhaust. **Note:** Support the exhaust during installation to prevent damage.

See the 'Rubber Isolator Removal Diagram'.



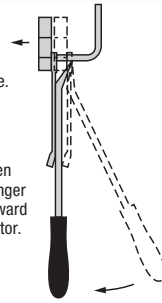
#### RUBBER ISOLATOR REMOVAL DIAGRAM

This technique can be used if exhaust hanger removal pliers are not available.

Using a 5/8" open end wrench, slide the wrench up to the rubber isolator, cradling the hanger rod as shown.

Place the flat edge of a pry bar between the wrench and the hanger stop or hanger rod. Then simply rotate the pry bar toward the wrench to remove the rubber isolator.

**Note:** Using a lubricant or soapy water on the hanger rod and the rubber isolator helps removal.



### Step 2

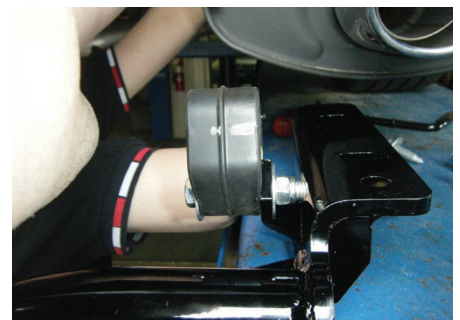
Remove two rubber isolators from the muffler. Remove the exhaust hanger and / or the exhaust hanger with existing tow loop.

Return the hangers and hardware to the vehicle owner.



### Step 3

Install the rubber isolators removed in Step 2 onto the trailer hitch with the provided 7/16" hex bolts (#9). Secure the isolators with 7/16" flat washers (#7) and nylock nuts (#8).



#### Step 4

Reverse fishwire (#3) a 1/2" carriage bolt (#6) and square-hole spacer (#5) through the existing hole in the passenger-side frame rail.

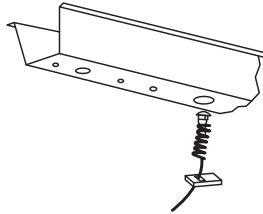


#### REVERSE PULL FISHWIRE TECHNIQUE

Attach the fishwire to the carriage bolt and slide the spacer onto the fishwire.

Push the bolt through the hole followed by the spacer, as shown.

Pull the bolt back into position, protruding from the frame.



#### Step 5

Raise the trailer hitch into position and secure with the provided M12 hex bolts (#1) and 1/2" conical-toothed washers (#2) into the existing vehicle weldnuts. Secure the 1/2" carriage bolt with the provided serrated-flange nut (#4).



#### Step 6

Torque all M12 hardware to 79 lb-ft. and 1/2" hardware to 110 lb-ft.

Raise the exhaust back into position.



#### Final Installed Image

