



INSTALLATION GUIDE

PART NUMBER: 5547

REAR ANTI-SWAY BAR

FORD F-150 CREW CAB | 1997-2003

FORD F-150 LIGHTNING | 1999-2004

FORD F-150 HARLEY DAVIDSON | 1999-2004

300 W. PONTIAC WAY CLOVIS, CA 93612

PHONE: 800-445-3767 | EMAIL: INFO@BELLTECH.COM

THANK YOU

Thank you for choosing our high quality Belltech product. We have spent a great deal of time developing our line of products so that you will receive maximum performance with minimal difficulty during installation. Soon your vehicle will be on the road looking and feeling much improved.

Please take a moment to read all instructions and warnings prior to installation of your new Belltech product and before operating your vehicle. If you have any questions or concerns regarding any step in the installation process, please do not hesitate to call or email our customer support specialists who are trained to help you through any portion of this process.

Before You Begin:

It is of the utmost importance that you confirm all the components listed on the parts list are in the kit. You can find this list located on the last page(s) of your instructions. Do not begin installation if any part is missing. Instead, please call our Belltech customer service specialists.

Belltech Customer Support:

Phone: 1-800-445-3767

Email: info@belltech.com

Safety Information:

Warning: Do not work under a vehicle supported only by a jack. Place support stands securely under the vehicle in the manufacturer's specified locations unless otherwise instructed.

Proper use of safety equipment and eye/face/hand protection is necessary when performing any of the following instructions.

We strive for an exceptional experience for all our valued customers. If for any reason you need assistance with your Belltech products, please do not return the product to the store you purchased from, but rather call our dedicated customer service experts, from 7am to 5pm PST.

We recommend that a qualified mechanic, in a properly equipped facility, perform this installation.

It is very helpful to have an assistant available during installation.

Before Driving Your Vehicle:

It is important to double check all brake hoses, cables, and other components to be sure there is no interference. You must also check for wheel/tire to chassis/body interference. If any issues are found, review your installation instructions to be sure no steps were missed, and any problems are corrected.

Make sure your vehicle is aligned immediately following installation.

Check all hardware and torque at intervals for the first 10, 100, and 1000 miles.

Some of Belltech's products are designed to improve your vehicle's off-road performance. Leveling/lifting your vehicle may result in an altered center of gravity. It is crucial to use extreme care when operating your vehicle to prevent rollover and/or loss of control.

Any changes in your vehicle's suspension may result in transformed handleability. Please test-drive your vehicle in a remote location so you can become accustomed to the revised driving characteristics.

Perform headlight check and adjustment.

Failure to drive any modified vehicle in a safe manner may result in harm or death.

Never operate your modified vehicle under the influence of drugs, alcohol, or lack of adequate sleep.

Always wear your seatbelt.



DIFFICULTY:



INSTALLATION TIME: 1-2 Hours

RECOMMENDED TOOLS:

- Properly rated floor jack
- Support stands
- Wheel chocks
- Metric and standard socket wrench set
- Metric and standard wrench set
- Drill with drill bit set
- Safety glasses
- Torque wrench rated up to 130 ft lbs.

JACKING, SUPPORTING, AND PREPARING THE VEHICLE

1. Park your vehicle on a smooth, level, concrete, or seasoned asphalt surface.
2. Block the front wheels of the vehicle using wheel chocks. Make sure the vehicle's transmission is in "PARK" (automatic) or first gear (manual).
3. Activate the parking brake.
4. Loosen, but do not remove, the rear wheel lug nuts.
5. Lift the rear of the vehicle off the ground using a properly rated floor jack. Lift the vehicle so the rear tires are approximately 6-8 inches off the ground.
6. Place support stands rated for the vehicle's weight. The stands must be positioned in the factory specified locations. (Refer to the owner's manual). Prior to lowering the vehicle onto stands, make sure the support stands will contact the chassis. It is very important that the vehicle is properly supported to prevent any harm to oneself or to the vehicle.
7. Lower the vehicle slowly onto the stands.
8. Remove the rear wheels.



Technician reminder:

Never work under a vehicle supported only by a jack. It is necessary to place support stands securely under the vehicle in the manufacturer's specified locations unless otherwise instructed.

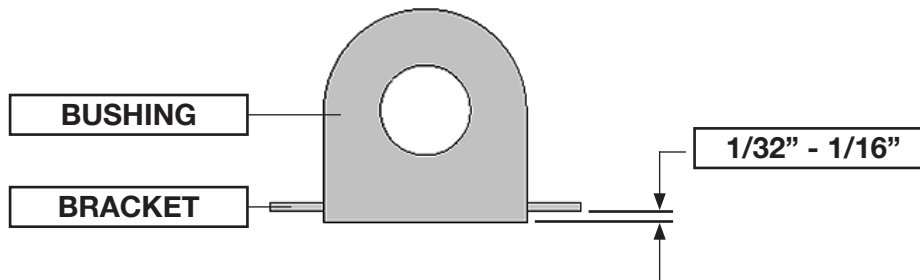
BELLTECH ANTI-SWAY BAR INSTALLATION

VEHICLES WITHOUT A FACTORY REAR SWAY BAR

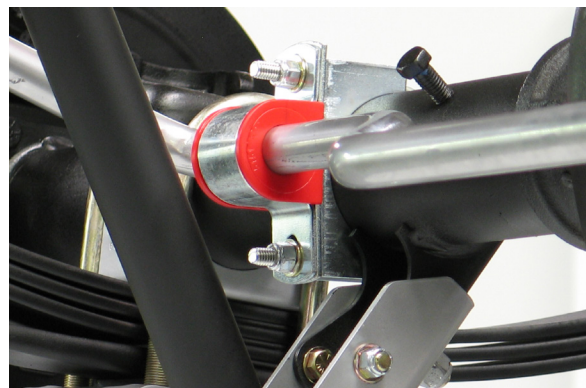
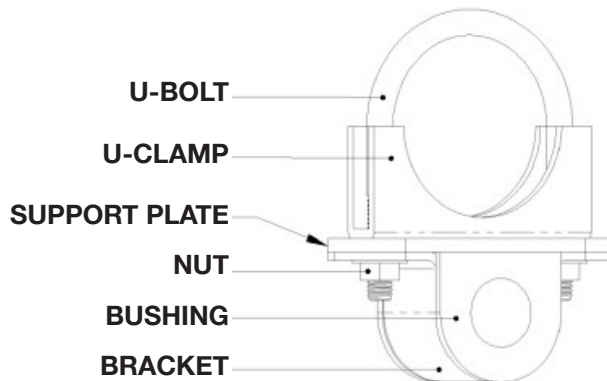
9. Thoroughly lubricate the inside of the supplied pivot bushings using the grease packet included with the kit.
10. Place the bushings on both sides of the Belltech sway bar, centered on the first set of bends. Once located, rotate the bushings slightly to evenly spread the lubricant. Place the bushing brackets over the bushings.



11. Ensure there is 1/32" to 1/16" of the bushing is showing after the bracket is seated. If the bushing is showing more than 1/16", use a sander or a sheet of coarse grit sandpaper to shave it down to the proper height.



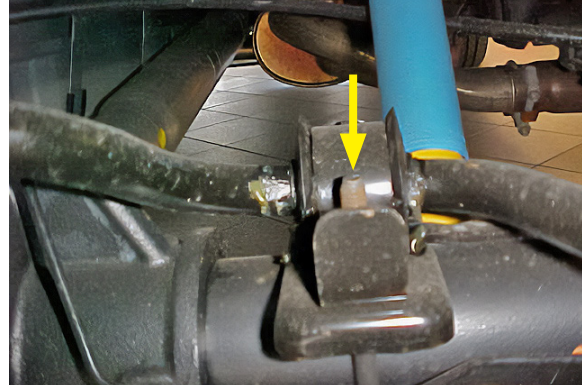
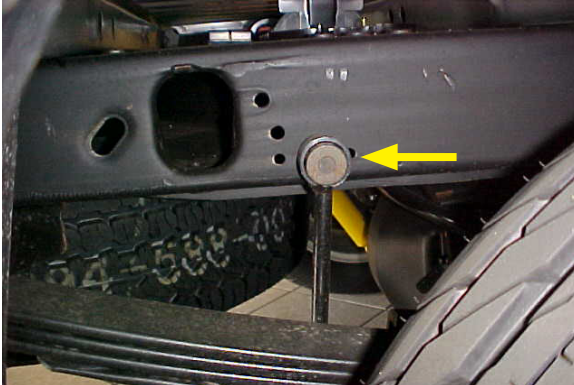
12. Carefully bend the hydraulic line away from the axle and place the U-bolts over the axle tube and under the brake line, ensuring the brake line is not clamped underneath. Place the U-clamp on the U-bolt followed by the support plate. Mount the sway bar with the bar ends pointed toward the rear of the vehicle and place the bushing bracket on the U-clamp. Hand tighten the supplied nuts on the U-bolt for now. Ensure the sway bar is positioned behind the axle.



BELLTECH ANTI-SWAY BAR INSTALLATION CONTINUED

VEHICLES WITH A FACTORY REAR SWAY BAR

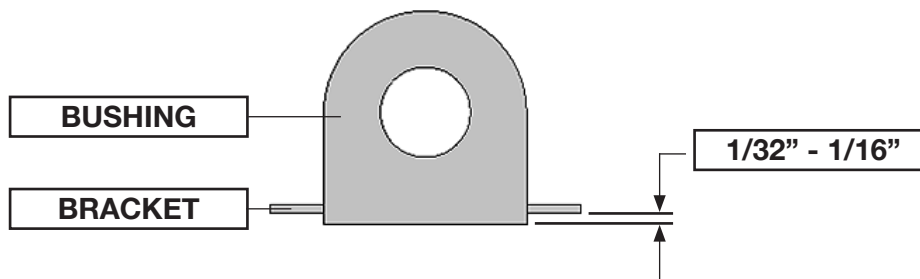
- Note the position of the original sway bar on the rear axle to help with the installation of the Belltech sway bar. Remove the frame bolts to detach the end link from the frame. Remove the pivot bushing bracket U-bolts from the axle mount to detach the bushing brackets. Detach the sway bar assembly from the vehicle.



- Thoroughly lubricate the inside of the supplied pivot bushings using the grease packet included with the kit.
- Place the bushings on both sides of the Belltech sway bar, centered on the first set of bends. Once located, rotate the bushings slightly to evenly spread the lubricant. Place the bushing brackets over the bushings.



- Ensure there is 1/32" to 1/16" of the bushing is showing after the bracket is seated. If the bushing is showing more than 1/16", use a sander or a sheet of coarse grit sandpaper to shave it down to the proper height.



- Mount the Belltech sway bar with Belltech pivot bushing brackets on the axle mount. Secure the sway bar assembly using the original hardware. Hand tighten but do not torque yet. Ensure the Belltech sway bar is in the original position.



BELLTECH ANTI-SWAY BAR INSTALLATION CONTINUED

VEHICLES WITH A STANDARD REAR EXHAUST

18. On the passenger side of the frame, locate the exhaust mount behind the rear axle. Remove the two bracket nuts on the backside of the mount to detach it from the frame. Detach the exhaust bracket arm from the lower rubber exhaust hanger.



19. The bracket arm must be bent and relocated several inches to the rear. Hold the bracket in its new position to determine where and how far the mounting arm needs to be bent. Use a vice or other clamping device to bend the mounting arm in the opposite direction.



20. Place the bracket in the new position over the two larger openings on the frame. Use the supplied exhaust relocation plate, attach the exhaust bracket to the frame with the original hardware, torque to 15 ft lbs. Attach the rubber hanger to the bracket arm.



BELLTECH ANTI-SWAY BAR INSTALLATION CONTINUED

21. Place the end link bracket on the frame locating it 3/4" forward from the edge of the big oval hole on the frame.

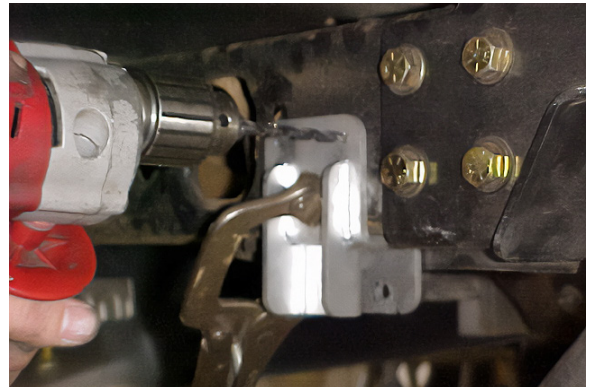


22. Use a vice grip or clamp to hold the mount in position. Use the mount as a template to drill the 1/4" inch holes in the side and the bottom of the frame. Attach the bracket to the frame with the supplied 1/4"-20 x 1-1/4" bolts, washers, and 1/4"-20 stover lock nuts. Torque to 14 ft lbs.



Technician warning:

Before drilling, check for electrical, fuel, and brake system components on the inside of the frame rail being drilled. Relocate the components as necessary so they are not damaged during the frame modification.



23. Attach the end links to the end link brackets and the sway bar ends using the 3/8"-16 x 2-1/2" bolts, washers, and 3/8"-16 Nyloc nuts. Torque to 44 ft lbs.

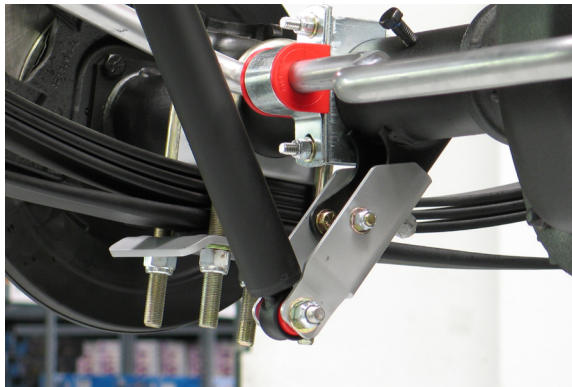


BELLTECH ANTI-SWAY BAR INSTALLATION CONTINUED

24. Before tightening the U-bolts to the axle, ensure the sway bar is centered from side to side, and confirm there is no interference with other components. Tighten the U-bolts and ensure the sway bar is centered behind the axle tube or just above the center of the tube. Torque to 30 ft lbs.



25. Once fastened, lift the rear axle with a floor jack to simulate a load or wait to place the vehicle weight on the wheels to verify the driver's side shock clears the sway bar. If the sway bar is touches or looks too close to the shock, loosen the U-bolts and rotate the clamp assembly upward to add clearance.

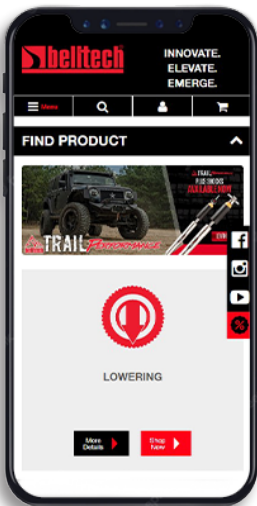


FINALIZING THE INSTALLATION

26. Mount the wheels and tighten the lug nuts
27. Lift the vehicle and remove the support stands.
28. Carefully lower the vehicle onto flat ground.
29. Torque the lug nuts to 100 ft lbs.
30. Check that all components and fasteners have been properly installed and torqued.
31. Read and perform all tasks in the “Before Driving Your Vehicle” section of page 1 of your instructions.

THANK YOU FOR CHOOSING BELLTECH.

You are now a part of the Belltech family and we are eager to catch a glimpse of your newly modified vehicle. Give us a shout out and let us know how much you love our product. Don't forget, we offer other Belltech related merchandise for you and your vehicle on our website www.belltech.com



[belltechsuspension](https://www.facebook.com/belltechsuspension)



[Belltech Suspension](https://www.youtube.com/BelltechSuspension)



[@belltechsuspension](https://www.instagram.com/belltechsuspension)

If you have any questions, concerns, or warranty related issues regarding your Belltech product, please call or email our experienced customer service specialists.

Belltech Customer Support:

Phone: 1-800-445-3767

Email: info@belltech.com

KIT CONTENTS



SWAY BAR KIT

Part number	Description	Qty
5547-300	1" REAR ANTI-SWAY BAR	1
5501	FRAME MOUNT KIT	1
5547-777	HARDWARE KIT	1

FRAME MOUNT KIT

Part number	Description	Qty
110100	1/4" WASHER	10
110103	1/4"-20 X 1-1/4" BOLT	10
112312	1/4"-20 STOVER LOCK NUT	10
110625	1/4"- 20 SPLINED RIVET NUT	11
112518	3/8" WASHER	8
112108	3/8"-16 X 2-1/2" BOLT	4
112318	3/8"-16 STOVER LOCK NUT	4
5501-001-95	HEX INSERT TOOL	1
5501-020-99	END LINK BRACKET	2

HARDWARE KIT

Part number	Description	Qty
5547-001-95	EXHAUST RELOCATION PLATE	1
110255	3/8"-16 NYLOC NUT	4
114050	END LINK	2
112260	3-1/4" U-CLAMP ASSEMBLY	2
113075	1" PIVOT BUSHING	2
115002-95	PIVOT BUSHING BRACKET	2
115003-95	BUSHING SUPPORT PLATE	2
55000-10	WHITE LITHIUM GREASE	1