



**ADVENTURE
FURTHER®**

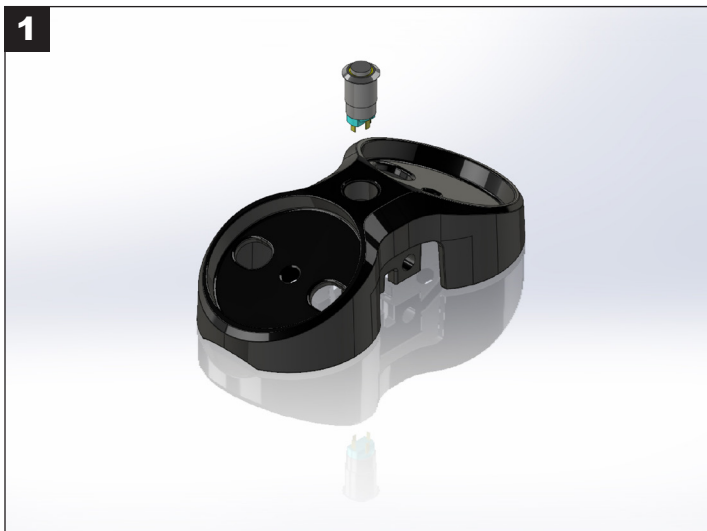
**2 LIGHT CYCLONE TUBE MOUNT
UNIVERSAL TUBE CLAMP
59-00069IM**

INSTALLATION INSTRUCTIONS

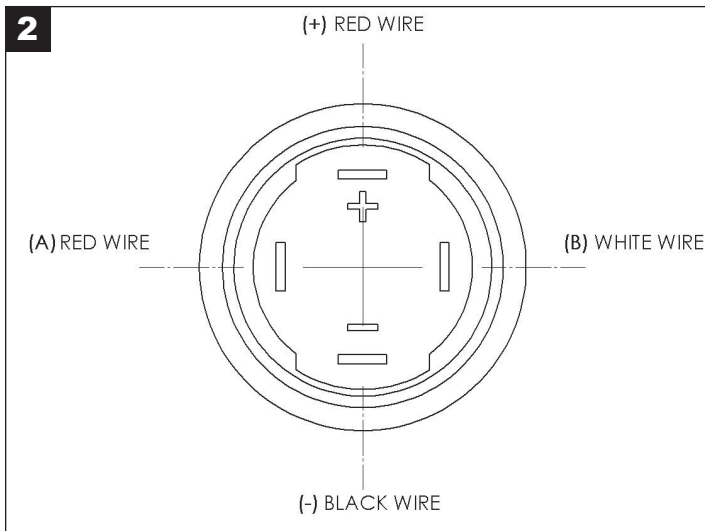
IMPORTANT: Please read all instructions before beginning installation. These guidelines are provided in good faith to help prevent any issues arising from errors during installation. The manufacturer of this product shall not be held responsible for any user actions taken or not taken during installation. There are many details of the installation that are assumed to be general mechanical knowledge to experienced installers; which are not detailed in these instructions. These installation guidelines are intended to serve as professional recommendations and are not as a step-by-step, fail-safe installation checklist. Selection of an experienced installer is the sole responsibility of the project owner.



TOOLS NEEDED: 5MM HEX BIT, WIRING TOOLS



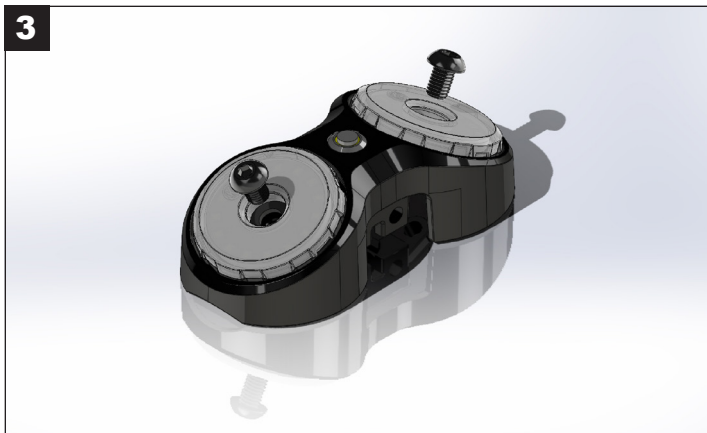
BEFORE STARTING THE INSTALL, ASSESS WHAT YOUR SETUP WILL BE AND DETERMINE YOUR WIRING NEEDS. YOU WILL NEED TO PROVIDE AND RUN WIRE FROM THE DOME LIGHT HOUSING TO YOUR BATTERY SOURCE.



WITH THE SWITCH IN PLACE, PLUG THE 4-WIRE CONNECTOR HOUSING INTO THE BACK OF THE SWITCH TERMINALS FOLLOWING THE DIAGRAM ABOVE. WE RECOMMEND RUNNING THE DOME LIGHT TO A SWITCHED OR IGNITION SOURCE AS THE AMBER HALO IS ALWAYS ON. THE AMBER HALO HAS A DRAW OF 15 MILLIAMPS.

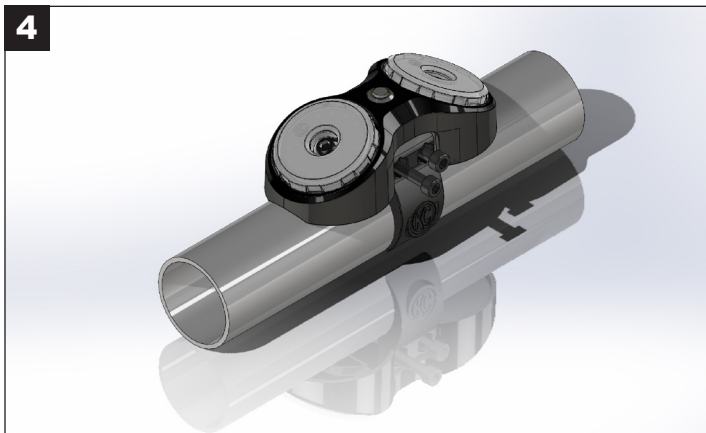
INSTALLATION INSTRUCTIONS

3



INSTALL YOUR TWO CYCLONES INTO THE MOUNT AND ROUTE THE WIRES THROUGH THE ACCESS HOLES. BOLT THE CYCLONES DOWN INTO THE THREADED HOLES OF THE HOUSING. CONNECT THE BULLET CONNECTORS TO THE APPROPRIATE CONNECTORS ON THE HARNESS. WE RECOMMEND WHITE DIFFUSED CYCLONES FOR INTERIOR SCENE LIGHTING.

4



TAKE YOUR ASSEMBLED DOME LIGHT HOUSING AND CLAWS, HOLD IT INTO THE POSITION OF YOUR DESIRED LOCATION. TIGHTEN DOWN THE BOLTS WITH A 5MM HEX BIT. ROUTE THE WIRING TO NOT GET PINCHED ANYWHERE. THE MAIN SOURCE SHOULD BE FUSED AT 5 AMPS.



MAKE SURE TO CHECK OUT OUR FULL RANGE OF INTERCHANGEABLE LENSES

