

# **CRAWL**TEK R E V O L U T I O N

491 W. GARFIELD AVE., COLDWATER, MI 49036 • 517.278.1039  
CRAWLTEKREVOLUTION.COM • E-MAIL: SALES-CRAWLTEK@RIDEFOX.COM

## INSTALLATION INSTRUCTIONS

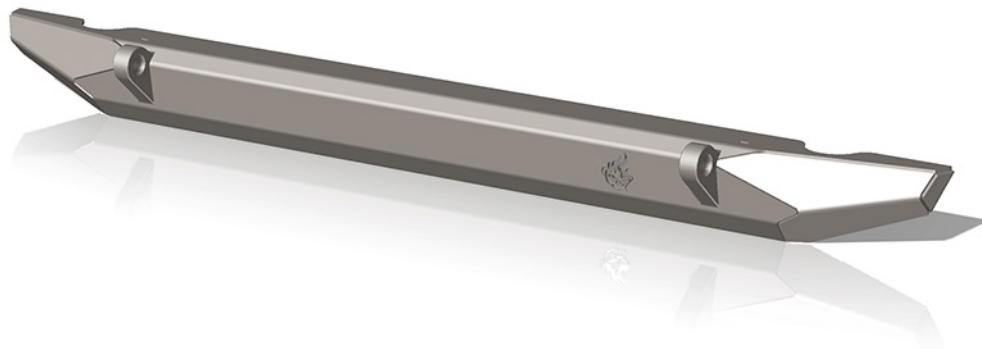
### **PYRO REAR BUMPER** **TJ20201 - MIDWIDTH**

#### FOR USE WITH

**CJ MODELS FROM 1976-1986**

**YJ MODELS FROM 1987-1995**

**TJ MODELS FROM 1997-2006**



CrawlTek YouTube

**PLEASE READ THROUGH INSTRUCTIONS BEFORE INSTALLING**

2023-02-17

## WHAT'S IN THE BOX?

PLEASE VERIFY KIT CONTENTS BEFORE BEGINNING INSTALLATION

<b>TJ20201</b>		<b>PYRO REAR BUMPER</b>
06091	1	REAR BUMPER - TJ PYRO
06176	1	PLATE: CRAWLTEK STAINLESS STEEL LOGO 2"
CWLU30010	1	DECAL: CRAWLTEK GEARSHIFT 3.5" X 3.5"
CWLU30020	1	DECAL: CRAWLTEK EYES 6" X 2"
CWLU30030	1	DECAL: CRAWLTEK JAX 3.75" X 2.8"
<b>C0033</b>	<b>1</b>	<b>BOLT PACK</b>
	8	7/16"-14 X 1-1/4" GRADE 8 YELLOW ZINC CARRIAGE BOLT
	8	7/16"-14 ZINC SERRATED FLANGE NUT
	8	7/16" THREAD - PUSHNUT RETAINER
<b>C0041</b>	<b>1</b>	<b>BOLT PACK</b>
	1	LOGO RIVETS

## TOOLS RECOMMENDED

SAFETY GLASSES

15MM SOCKET OR WRENCH

3/4" SOCKET OR WRENCH

11/16" SOCKET OR WRENCH

5/8" SOCKET OR WRENCH

1/2" DRILL (OPTIONAL)

RATCHET

## PRE-INSTALLATION

1. THE PYRO REAR BUMPER WORKS WITH SOME REAR HITCHES INCLUDING THE MOPAR REAR HITCH. PLEASE BE AWARE THAT IT MAY BE NECESSARY TO REMOVE YOUR HITCH IN ORDER TO INSTALL THE PYRO REAR BUMPER.
2. ADDITIONAL BOLTS CAN BE USED TO MOUNT BUMPER HOWEVER FUEL TANK WILL NEED TO BE REMOVED TO GAIN ACCESS TO THE BACKSIDE OF THE BUMPER.



## FACTORY BUMPER REMOVAL

### STEP 1:

REMOVE THE 2 TOP TORX HEAD BOLTS AND THE 1 BOTTOM TORX HEAD BOLT FROM FACTORY BUMPER END CAPS (FIG. 1, FIG. 2)



FIGURE 1

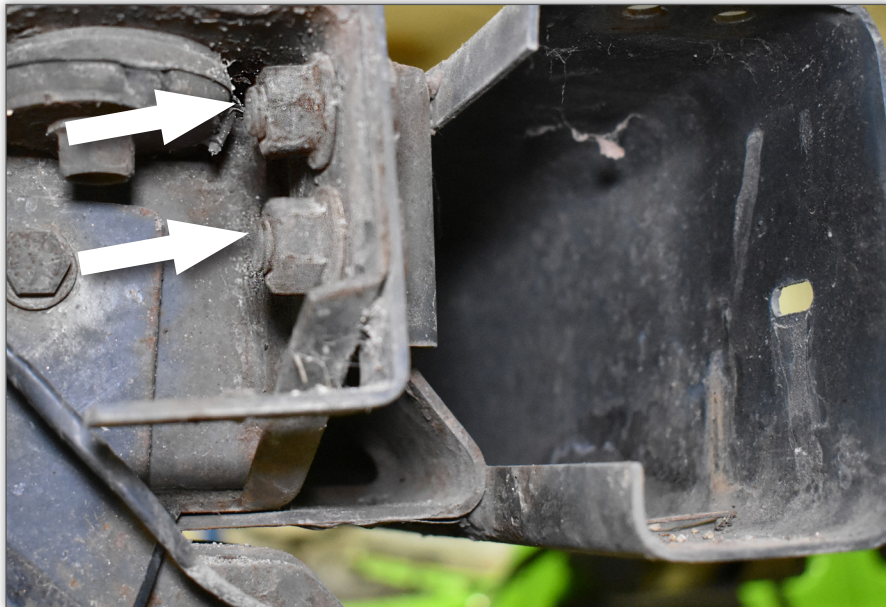


FIGURE 2



**STEP 2:**

REMOVE THE 4 INSIDE BOLTS AND THE 2 BOTTOM BOLTS FROM FACTORY BUMPER. (FIG. 3, FIG. 4)



**FIGURE 3**



**FIGURE 4**



## INSTALLATION OF THE PYRO REAR BUMPER

### (OPTIONAL):

TJ OWNERS CAN ADD THE 2 INSIDE HOLES TO ADD 4 ADDITIONAL MOUNTING LOCATIONS. FUEL TANK MUST BE REMOVED BEFORE DRILLING HOLES. MEASURE IN FROM THE OUTSIDE HOLES CENTERS TO 7 3/4". STARTING SMALL, STEP UP DRILL BIT SIZES AND FINISH WITH 1/2" BIT, DRILLING FOUR HOLES (2 ON EACH SIDE) IN LOCATION SHOWN (FIG. 5). MOUNT CARRIAGE BOLTS INTO NEW BUMPER USING PUSH NUTS AS SHOWN IN (FIG. 6)

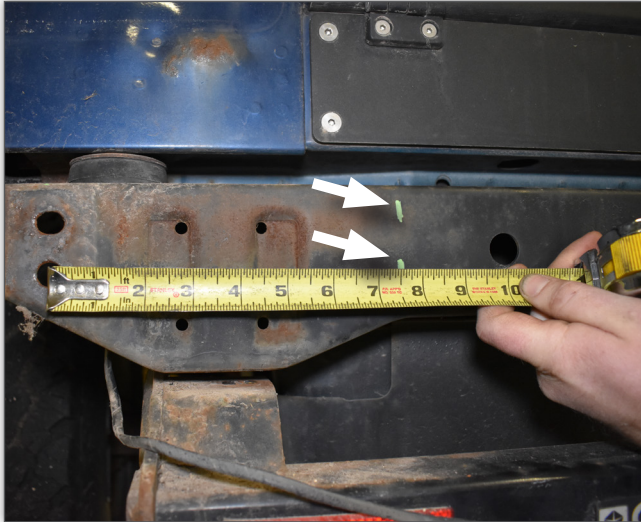


FIGURE 5



FIGURE 6

### STEP 1:

INSTALL CARRIAGE BOLTS INTO THE BUMPER RETAINING WITH PUSH NUTS. (FIG. 7)

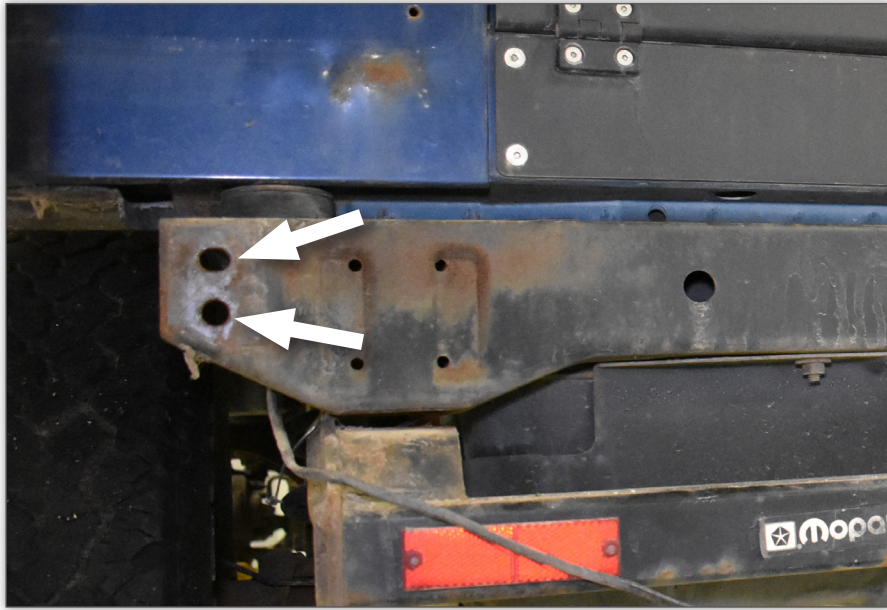


FIGURE 7

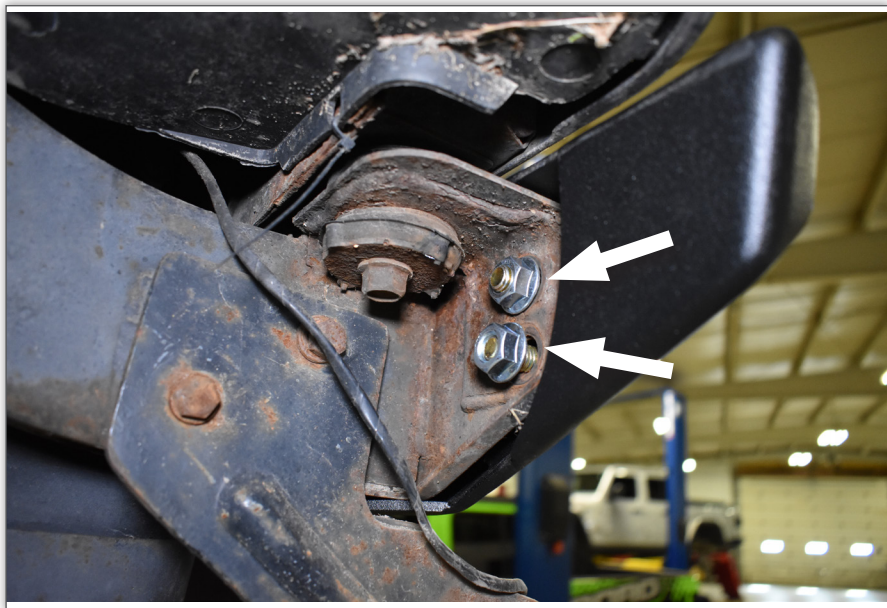


**STEP 2:**

THIS STEP REQUIRES TWO PEOPLE TO COMPLETE. SET BUMPER ON FRAME, ALIGN 4 BOLTS TO FACTORY HOLES AT EITHER END OF FRAME CROSS-MEMBER AND ATTACH WITH SERRATED FLANGE NUTS. DO NOT TIGHTEN. **(FIG. 8, FIG. 9)**



**FIGURE 8**

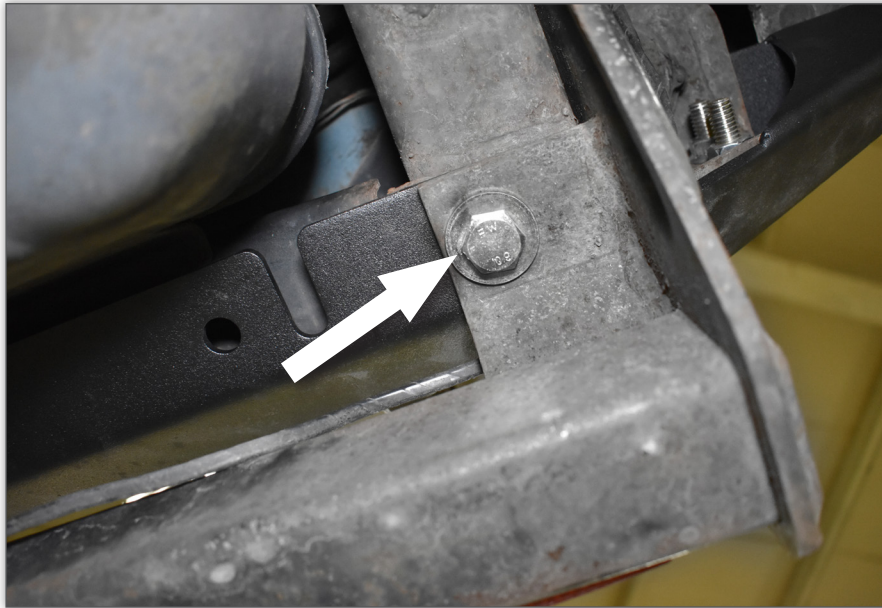


**FIGURE 9**



**STEP 3:**

TORQUE FOUR SERRATED FLANGE NUTS AT THE CROSS MEMBER TO 70 FT-LBS AND LOWER BOLTS AT THE FRAME RAIL TO 57 FT-LBS. TO ATTACH BUMPER AT THE BOTTOM. **(FIG. 10)** IF REINSTALLING OE OR AFTERMARKET HITCH RECEIVER, REFER TO SPECIFIC PRODUCT FOR REQUIRED TORQUE SPECIFICATIONS.



**FIGURE 10**

**STEP 4:**

RIVET CRAWLTEK BADGE IN PLACE **(FIG.11)**



**FIGURE 11**





## **YOU'RE NOT DONE YET!**

*Thank you for your new CrawlTek Revolution purchase! Follow us on facebook for up to date coverage of new product releases. We love feedback, if you have any questions about the installation or parts were missing please contact us at [sales-crawltek@ridefox.com](mailto:sales-crawltek@ridefox.com) or call us at 517.278.1039.*

*Be sure to show off your jeep to the rest of the CrawlTek Revolution online.  
Find us on facebook and instagram to keep up on new products, upcoming events and more action.  
Tag us @crawltek for a chance to get featured*

