

# **CRAWLTEK**

## REVOLUTION

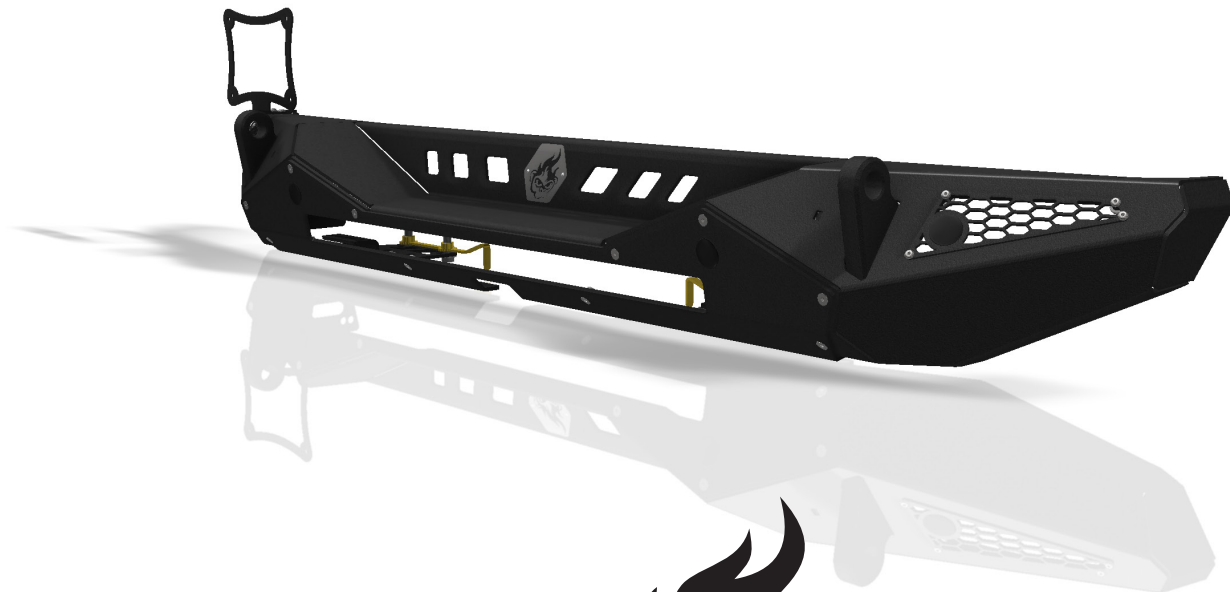
491 W. GARFIELD AVE., COLDWATER, MI 49036 • 517.278.1039  
CRAWLTEKREVOLUTION.COM • E-MAIL: SALES-CRAWLTEK@RIDEFOX.COM

### INSTALLATION INSTRUCTIONS

## BLAZE REAR BUMPER

### JL22101 - MIDWIDTH

FOR USE WITH ALL  
JL AND JLU MODELS FROM 2018-CURRENT



CrawTek YouTube

**PLEASE READ THROUGH INSTRUCTIONS BEFORE INSTALLING**

2022-07-01

## WHAT'S IN THE BOX?

PLEASE VERIFY KIT CONTENTS BEFORE BEGINNING INSTALLATION

PART #	Qty	DESCRIPTION
06008	1	BUMPER - JL REAR - BLAZE
06180	1	ALUMINUM CENTER SECTION - BLANK
06010	2	WING VENT
06013	1	JL - FRAME MOUNT
06014	1	JL - FRAME MOUNT
06015	1	CROSSMEMBER MOUNT
06016	1	CROSSMEMBER MOUNT
06017	1	CROSSMEMBER NUT STRIP
06018	1	LICENSE PLATE BRACKET
CWLU30010	1	DECAL: CRAWLTEK GEARSHIFT 3.5" X 3.5"
CWLU30020	1	DECAL: CRAWLTEK EYES 6" X 2"
CWLU30030	1	DECAL: CRAWLTEK JAX 3.75" X 2.8"
	8	#10-24 X 5/8" 18-8 BLACK STAINLESS STEEL BUTTON SOCKET CAP SCREW
	12	1/4"-20 X 1/2" 18-8 BLACK STAINLESS STEEL FLAT SOCKET CAP SCREW
	6	1/4"-20 X 3/4" 18-8 BLACK STAINLESS STEEL FLAT SOCKET CAP SCREW
	12	1/4"-20 ZINC FINISH SERRATED FLANGE NUT
	8	7/16"-14 X 1" GRADE 8 YELLOW ZINC HEX CAP SCREW
	4	7/16"-20 X 1.5" GRADE 8 YELLOW ZINC HEX CAP SCREW
	12	7/16" X .915/.937" YELLOW ZINC STEEL SAE FLAT WASHER
	8	7/16"-14 ZINC SERRATED FLANGE NUT
	4	1-1/8" NYLON PLASTIC LOCKING PANEL PLUG
	4	M12-1.5 ZINC FLANGE NUT
	4	1/4"-20 X 1/2" 18-8 STAINLESS STEEL STAR DRIVE TRUSS HEAD
	2	1/4"-20 X 5/8" 18-8 STAINLESS STEEL BUTTON SOCKET CAP SCREW



## TOOLS REQUIRED

SAFETY GLASSES  
21MM SOCKET OR WRENCH  
18MM SOCKET OR WRENCH  
17MM SOCKET OR WRENCH  
16MM SOCKET OR WRENCH  
10MM SOCKET OR WRENCH  
8MM SOCKET OR WRENCH  
11/16" SOCKET OR WRENCH  
5/8" SOCKET OR WRENCH  
9/16 WRENCH  
7/16" SOCKET  
3/16" ALLEN HEAD SOCKET

## FACTORY REAR BUMPER REMOVAL

### STEP 1:

DISCONNECT REAR BUMPER HARNESS LOCATED UNDER THE DRIVER CORNER.

### STEP 2:

REMOVE (4) 16MM BOLTS FROM CROSSMEMBER.

### STEP 3:

REMOVE (4) 16MM BUMPER SIDE SUPPORT BOLTS, (2) FROM EACH SIDE.

### STEP 4:

REMOVE (4) 17MM BUMPER MOUNTING NUTS (2) FROM EACH SIDE.

### STEP 5:

REMOVE BUMPER.

### STEP 6:

REMOVE (6) 8MM BOLTS FROM THE LOWER INNER FENDER LINERS (3) FROM EACH SIDE.

### STEP 7:

USING A 18MM SOCKET REMOVE EACH BUMPER SIDE SUPPORT BRACKET.

### STEP 8:

REMOVE THE BUMPER MOUNTING BRACKETS WITH A 21MM SOCKET.

### STEP 9 (OPTIONAL):

REMOVE THE (4) 18MM BOLTS THAT SECURE THE FACTORY TOW HOOK TO THE VEHICLE.



## ASSEMBLING THE JEEP BLAZE REAR BUMPER

### STEP 10:

INSTALL OUTER VENTS WITH #10/24 BUTTON HEAD BOLTS AND FLANGE NUTS.

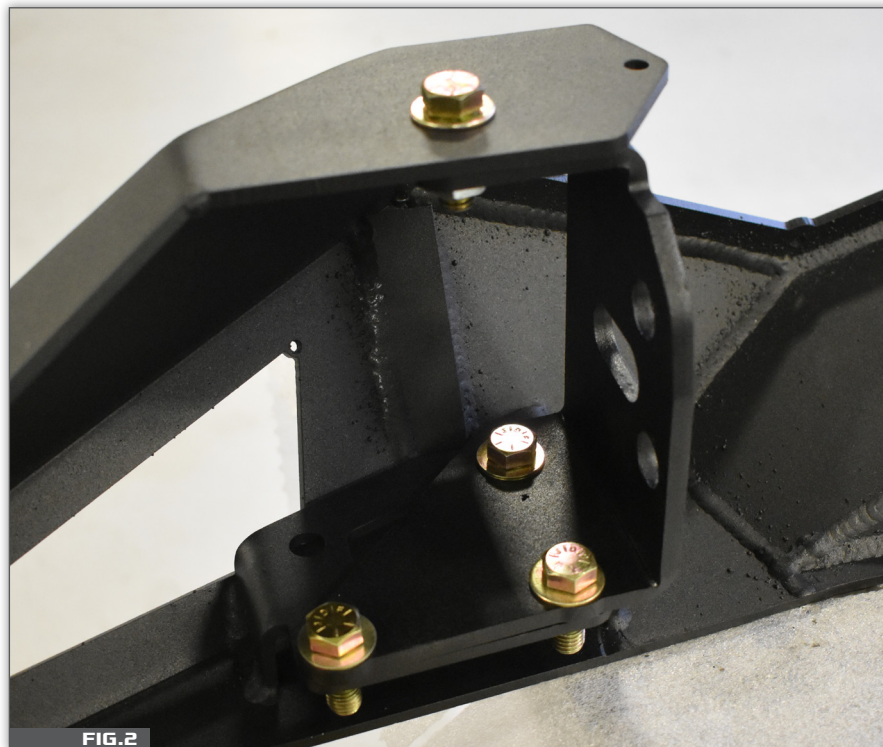


### STEP 11:

INSTALL PARKING SENSORS INTO OUTER VENTS IF EQUIPPED, OR INSTALL PLASTIC PLUG.

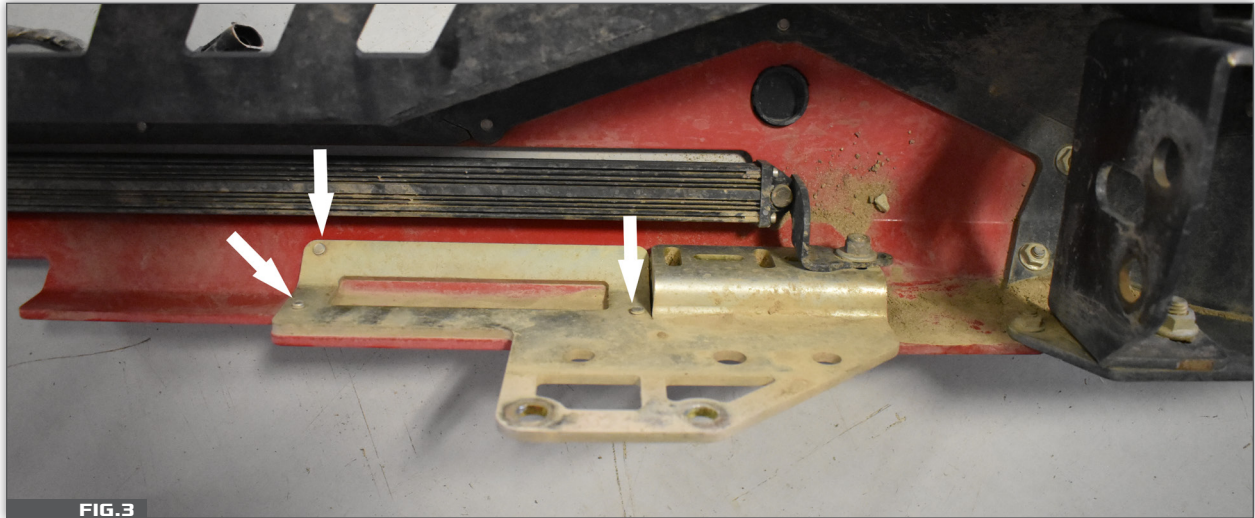
### STEP 12:

INSTALL SIDE FRAME BRACKETS LOOSELY ON BUMPER WITH 7/16" HARDWARE.



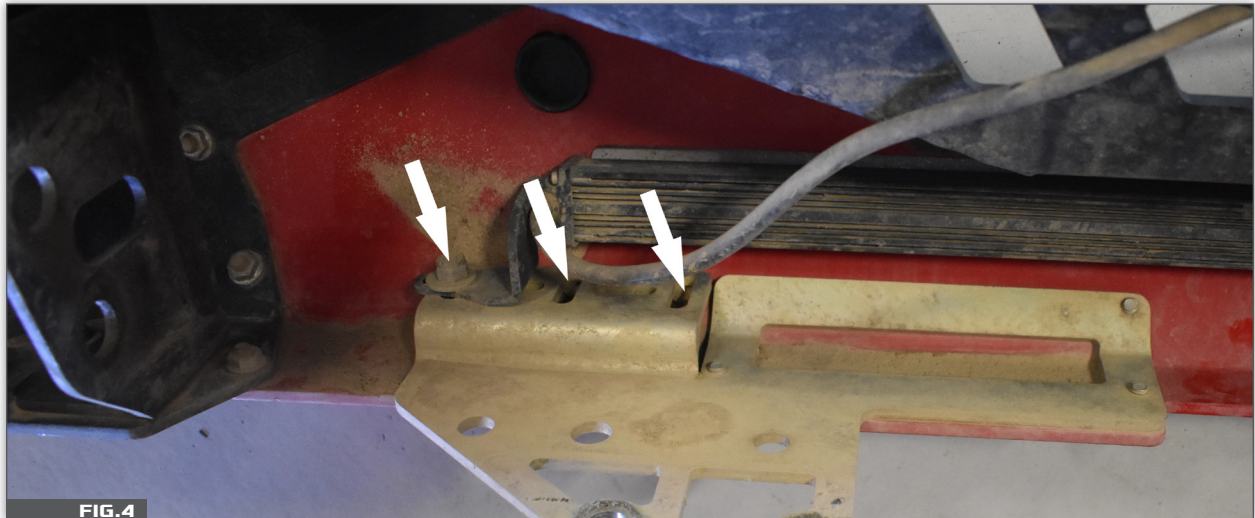
**STEP 13:**

INSTALL CROSSMEMBER BRACKETS TO CENTER SECTION WITH 1/4" FLAT HEAD SOCKET SCREWS.



**STEP 14:**

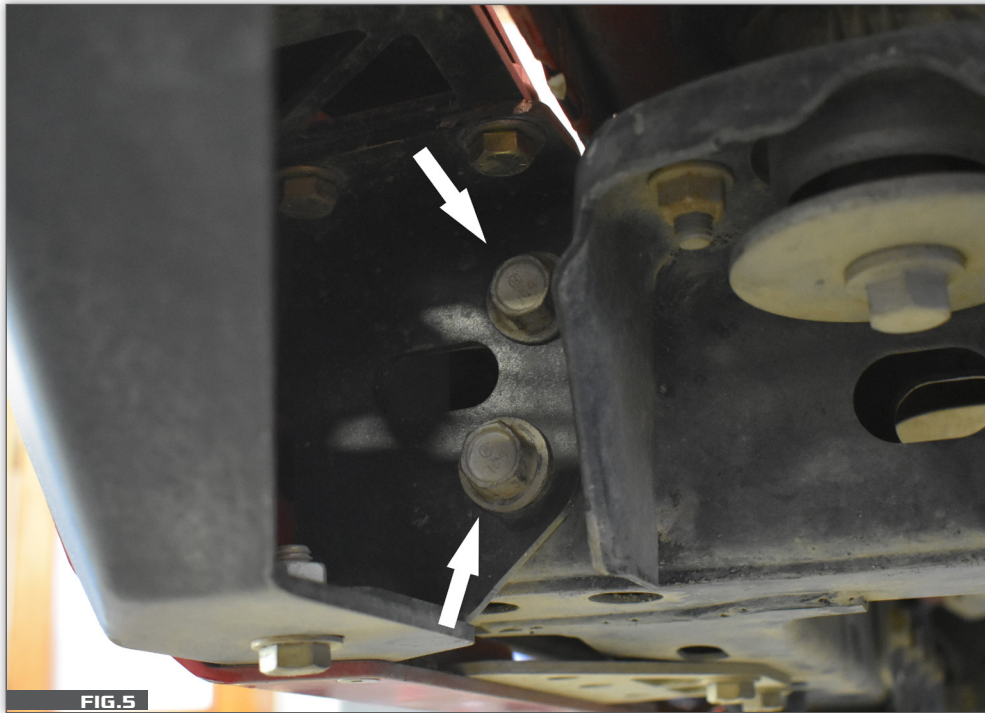
INSTALL LIGHTBAR USING ONE OF THE 3 MOUNTING SLOTS. THE JL BLAZE REAR BUMPER WAS DESIGNED TO ACCOMODATE SEVERAL POPULAR 30" LIGHTBARS, HOWEVER SOME CUSTOM MODIFICATIONS MAY BE REQUIRED TO THE MANUFACTURER BRACKETS.



## INSTALLATION OF THE BLAZE REAR BUMPER

### STEP 15:

INSTALL BUMPER ONTO VEHICLE FRAME USING THE FACTORY HARDWARE, ALIGN BUMPER AND TIGHTEN ALL BOLTS.



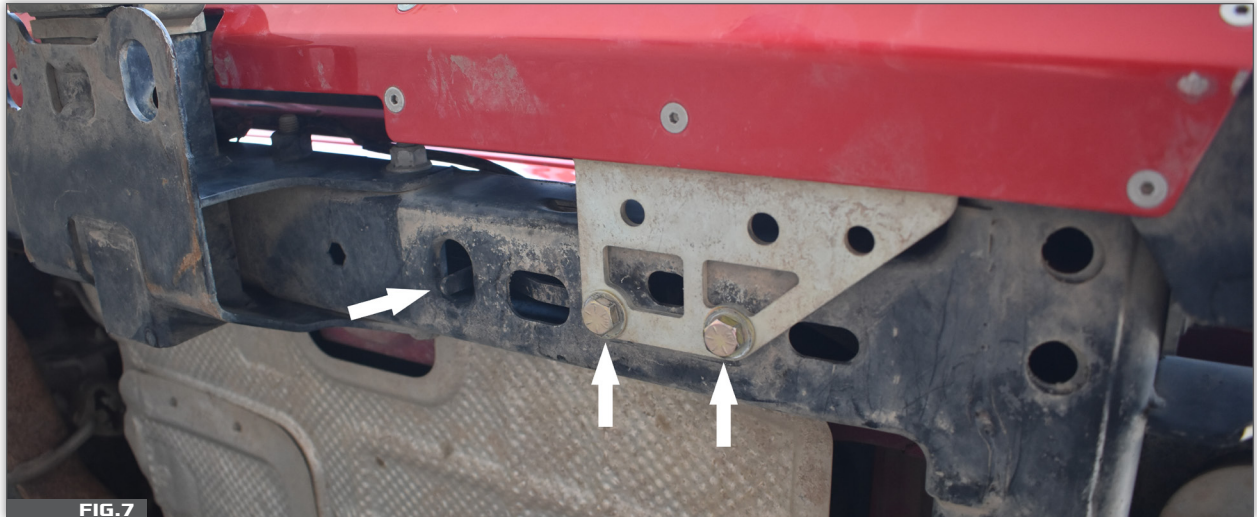
### STEP 16:

INSTALL LIGHTBAR CENTER SECTION ON TO BUMPER MAIN BODY USING 1/4" FLAT HEAD SOCKET SCREWS.



**STEP 17:**

INSERT CROSSMEMBER NUT STRIPS INTO FRAME, THEN INSERT THE 7/16-20 HARDWARE AND TIGHTEN.



**STEP 18 (OPTIONAL):**

INSTALL LICENSE PLATE FRAME TO LEFT SIDE OF THE BUMPER.





## YOU'RE NOT DONE YET!

*Thank you for your new CrawlTek Revolution purchase! Follow us on facebook for up to date coverage of new product releases. We love feedback, if you have any questions about the installation or parts were missing please contact us at [sales-crawltek@ridefox.com](mailto:sales-crawltek@ridefox.com) or call us at 517.278.1039.*

*Be sure to show off your jeep to the rest of the CrawlTek Revolution online. Find us on facebook and instagram to keep up on new products, upcoming events and more action. Tag us @crawltek for a chance to get featured*

