

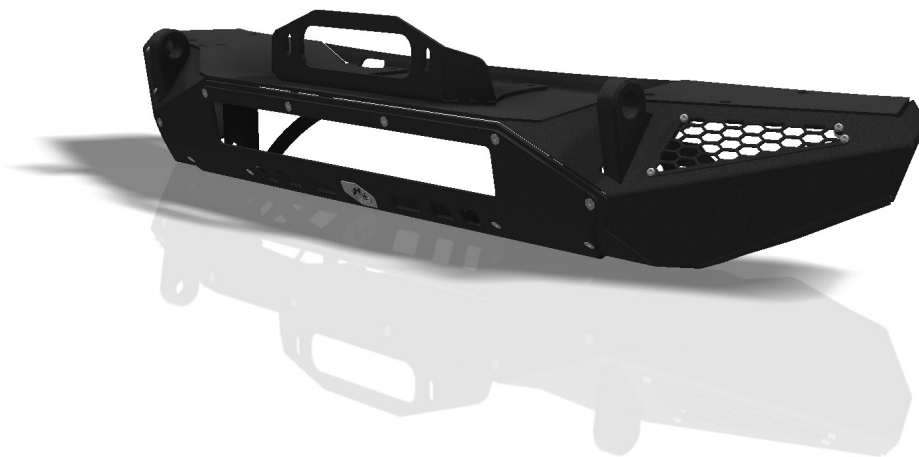
CRAWLTEK R E V O L U T I O N

491 W. GARFIELD AVE., COLDWATER, MI 49036 • 517.278.1039
CRAWLTEKREVOLUTION.COM • E-MAIL: SALES-CRAWLTEK@RIDEFOX.COM

INSTALLATION INSTRUCTIONS

BLAZE FRONT BUMPER **JL12101 - 20 INCH LIGHTBAR**

FOR USE WITH ALL
JL AND JLU MODELS FROM 2018-CURRENT



CrawlTek YouTube

PLEASE READ THROUGH INSTRUCTIONS BEFORE INSTALLING

2022-10-03

WHAT'S IN THE BOX?

PLEASE VERIFY KIT CONTENTS BEFORE BEGINNING INSTALLATION

PART #	Qty	DESCRIPTION
06001	1	JL BLAZE FRONT BUMPER
06002	2	JL BLAZE FRONT BUMPER WING VENT
06003	1	JL BLAZE FRONT BUMPER FAIRLEAD MOUNT
06004	1	JL BLAZE FRONT BUMPER CENTER FACE 20IN LIGHT PLATE
06005	1	JL BLAZE FRONT BUMPER 20IN LIGHT MOUNT - DRV
06006	1	JL BLAZE FRONT BUMPER 20IN LIGHT MOUNT - PASS
06176	1	CRAWLTEK STAINLESS STEEL LOGO
CWLU30010	1	DECAL: CRAWLTEK GEARSHIFT
CWLU30020	1	DECAL: CRAWLTEK EYES
CWLU30030	1	DECAL: CRAWLTEK JAX
	8	7/16"-14 X 1" HEX CAP SCREW
	8	7/16" X 0.922" SAE FLAT WASHER
	8	7/16"-14 SERRATED EDGE FLANGE NUT
	8	7/16" PUSHNUT BOLT RETAINER
	8	#10-24 X 5/8" SS BUTTON SOCKET HEAD CAP SCREW
	2	1/4"-20 X 5/8" FLAT HEAD SOCKET CAP SCREW
	12	1/4"-20 X 3/4" FLAT HEAD SOCKET CAP SCREW
	2	1/4"-20 SERRATED EDGE FLANGE NUT
	4	18-8 3/32" SS RIVET

TOOLS REQUIRED

SAFETY GLASSES

18MM SOCKET OR WRENCH

10MM SOCKET OR WRENCH

11/16" SOCKET OR WRENCH

5/8" SOCKET OR WRENCH

9/16" WRENCH

7/16" SOCKET

3/16" ALLEN HEAD SOCKET

FLAT HEAD SCREWDRIVER



PRE-INSTALLATION NOTES

1. INSTALLING A LARGE BODIED WINCH MAY REQUIRE ADDITIONAL CUTTING TO TOP OF THE FRAMEHORNS.

FACTORY FRONT BUMPER REMOVAL

STEP 1:

REMOVE THE TOP TWO (2) PINS HOLDING THE BUMPER VALENCE BRIDGING THE GAP BETWEEN BUMPER AND BOTTOM OF THE FRONT GRILL ASSEMBLY (FIG 1).



FIGURE 1

STEP 2:

REMOVE THE EIGHT (8) PUSH PINS THAT ATTACH THE FRONT LOWER VALENCE TO THE BOTTOM OF THE STOCK FRONT BUMPER. NEXT, REMOVE THE TWO (2) SCREWS THAT CONNECT THE LOWER VALENCE TO THE FRAME CROSSMEMBER (FIG 2).

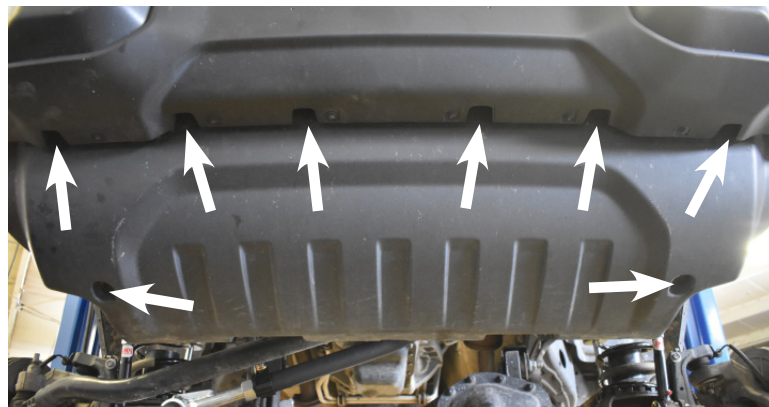


FIGURE 2



STEP 3:

DISCONNECT THE STOCK FOG LIGHT WIRING HARNESS RUNNING ALONG THE PASSENGER SIDE FRAME RAIL FROM THE PIGTAIL CONNECTOR ON THE FACTORY BUMPER (FIG 3).



FIGURE 3

STEP 4:

REMOVE EIGHT (8) FACTORY BUMPER NUTS. REMOVE BUMPER FROM THE VEHICLE (FIG 4).



FIGURE 4

OPTIONAL:

REMOVE TWO BOLTS THAT MOUNT CROSSMEMBER TO EACH FRAME RAIL AND REMOVE CROSSMEMBER PLATE, LOCATED BELOW THE FRONT BUMPER (FIG 5, PG. 5).

STEP 5:

REMOVE THE TWO FACTORY BUMPER BRACKETS, ONE ON EACH FRAME HORN (FIG 6, PG. 5). THESE WILL NOT BE USED TO INSTALL THE NEW CRAWLTEK BLAZE FRONT BUMPER.





FIGURE 5



FIGURE 6

INSTALLATION - BLAZE FRONT BUMPER

STEP 6:

PLACE BLAZE FRONT BUMPER ONTO A TABLE. INSTALL 7/16" BOLTS INTO BUMPER FRONT-TO-REAR AND RETAIN WITH 7/16" PUSH NUT RETAINERS, USING A SOCKET TO HELP POSITION THE PUSH NUT (FIG 7, PG. 6). THE PUSH NUT RETAINERS WILL KEEP BOLTS IN PLACE WHILE INSTALLING THE FRONT BUMPER (FIG 8, PG. 6).





FIGURE 7

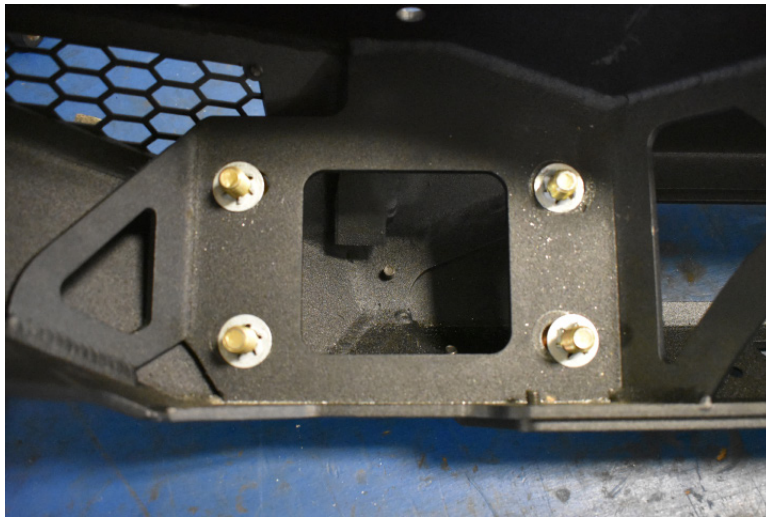


FIGURE 8

STEP 7:

PLACE BUMPER ONTO FRAME RAILS AND ALIGN EIGHT (8) 7/16" BOLTS WITH THE OE FRAME HORN BRACKET HOLES (FIG 9, PG. 7). FASTEN ALL 7/16" BOLTS WITH SERRATED FLANGE NUTS. TORQUE HARDWARE TO 68 FT-LBS.



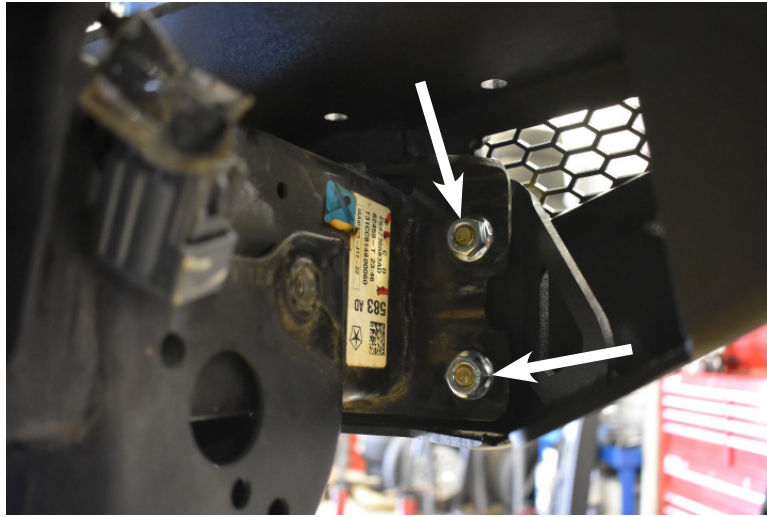


FIGURE 9

STEP 8:

USING FOUR (4) OF THE SUPPLIED 10-24 HARDWARE, INSTALL THE PASSENGER SIDE BUMPER VENT (FIG 10). TORQUE HARDWARE TO 4 FT-LBS. REPEAT FOR DRIVER SIDE VENT.



FIGURE 10

STEP 9:

INSTALL CRAWLTEK STAINLESS STEEL LOGO USING PROVIDED 3/32" SS RIVETS (FIG 11, PG 8).



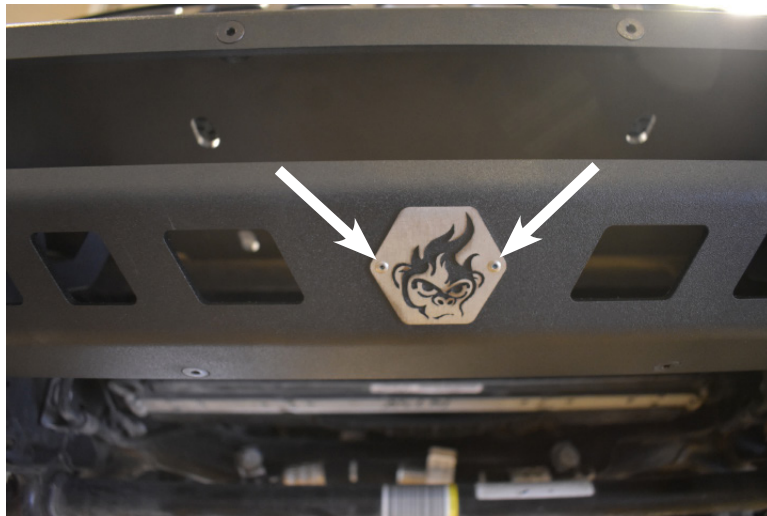


FIGURE 11

STEP 10:

INSTALL CENTER SECTION (06004) ON TO THE BUMPER SHELL AND FASTEN USING 1/4" FLAT SOCKET CAP SCREWS. USE THE TWO (2) 5/8" LENGTH FLAT SOCKET CAP SCREWS BOTTOM CENTER AND FASTEN WITH THE TWO (2) PROVIDED SERRATED FLANGE NUTS (FIG 12). TORQUE 5/8" LENGTH HARDWARE TO 11 FT-LBS.

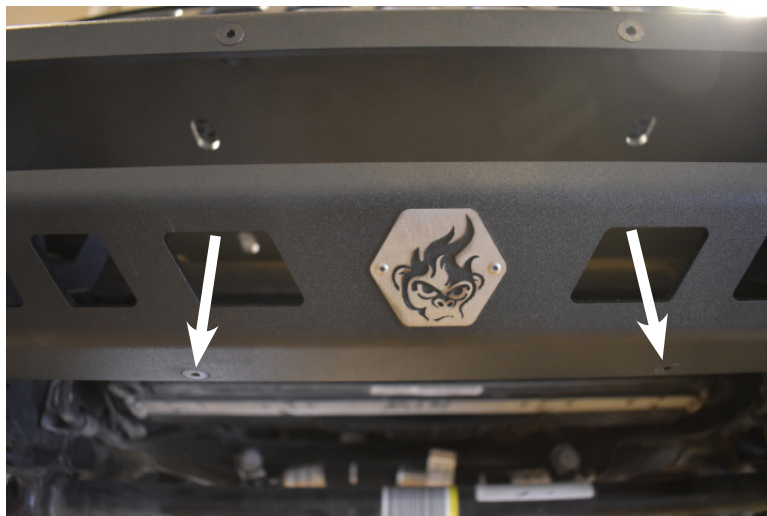


FIGURE 12

POST INSTALLATION

OPTIONAL: WINCH AND FAIRLEAD INSTALLATION

FOR THOSE LOOKING TO ADD MORE FUNCTIONALITY TO THEIR NEW BLAZE FRONT BUMPER, REFER TO OUR WINCH AND FAIRLEAD INSTALLATION INSTRUCTIONS TO TAKE YOUR TRAIL CAPABILITY TO THE NEXT LEVEL.

OPTIONAL: LIGHTBAR INSTALLATION

FOR THOSE LOOKING TO LIGHT UP THE NIGHT, REFER TO OUR LIGHTBAR INSTALLATION GUIDE FOR HOW-TO MOUNTING TIPS TO YOUR NEW BLAZE FRONT BUMPER.





YOU'RE NOT DONE YET!

Thank you for your new CrawlTek Revolution purchase! Follow us on Facebook for up to date coverage of new product releases. We love feedback, if you have any questions about the installation or parts were missing please contact us at sales-crawltek@ridefox.com or call us at 517.278.1039.

Be sure to show off your Jeep to the rest of the CrawlTek Revolution online. Find us on Facebook and Instagram to keep up on new products, upcoming events and more action. Tag us @crawltek for a chance to get featured

