

Heavy Duty Front Bumper 2015-2018 Ram Rebel

AL-FBM11DGN-RT 10/13/20

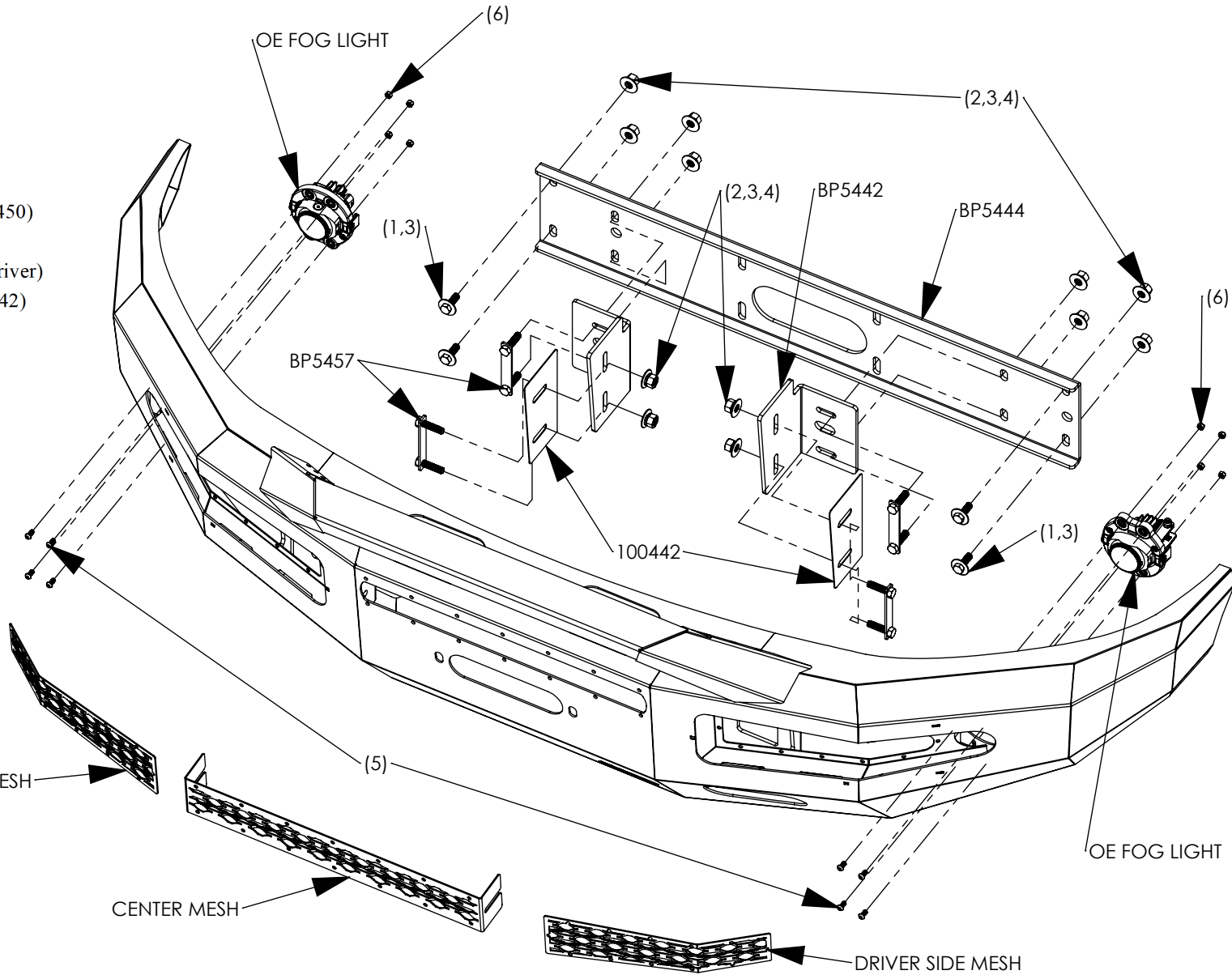
Hardware Kit Includes:

- (1) 4 – Hex head bolts (M10-1.5 x 30mm) Grade 8
- (2) 12 – Hex Head Nuts (M10-1.5)
- (3) 16 – Flat washers (M10 OD 30mmx 2.5mm)
- (4) 12 – Lock Washers (M10)
- (5) 28 – Allen head bolt (M5 x 16mm SS)
- (6) 28 – Flange Nut (M5 SS)

Components List:

- 1 – Alumilite Bumper
- 2 – Outside Mounting brackets (BP5442)
- 4 – M10 T-Bolts (BP5457)
- 2 – Aftermarket Fog Light Adapters (BP5450)
- 1 – Center Mesh/light mount (BP5433)
- 2 – Side Vent Mesh (BP5443 1 Passenger/1 Driver)
- 2 – Inside/Outside Bracket Isolators (100442)
- 1 – Winch Plate (BP5444)
- 1 – RT Light Mount
- 2 – RT Light Mount Foam Gaskets
- 4 – RT Light Mount Hole Plugs

**LOOSE FIT ALL COMPONENTS.
DO NOT TIGHTEN UNTIL ALL
COMPONENTS ARE INSTALLED
AND ADJUSTED.**

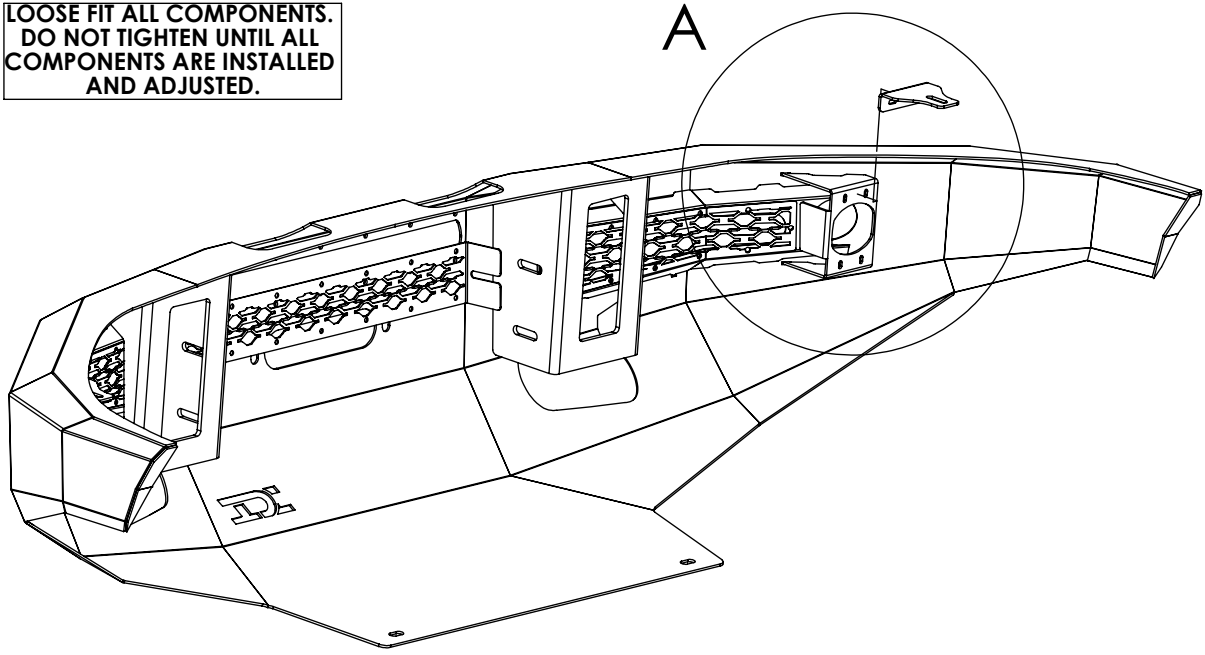


**Heavy Duty Front Bumper
2015-2018 Ram Rebel**

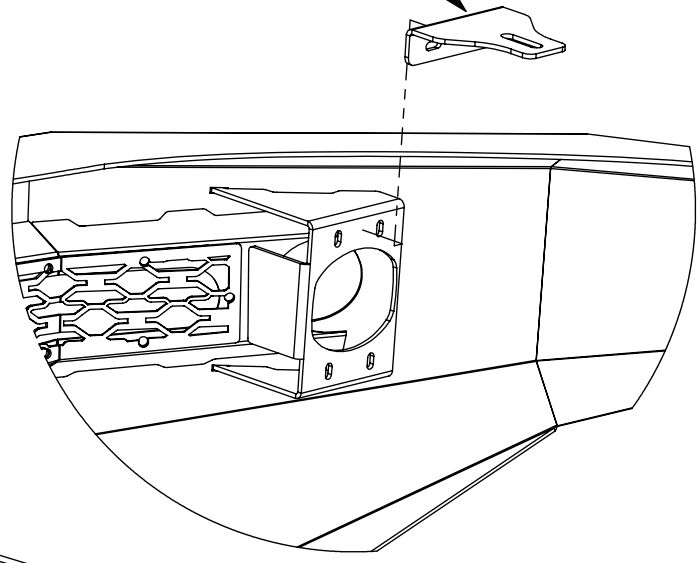
AL-FBM11DGN-RT
7/14/20

**OPTIONAL AFTERMARKET
STUD MOUNT FOG LIGHT
ADAPTER**

LOOSE FIT ALL COMPONENTS.
DO NOT TIGHTEN UNTIL ALL
COMPONENTS ARE INSTALLED
AND ADJUSTED.



Aftermarket Fog
Light Adapter



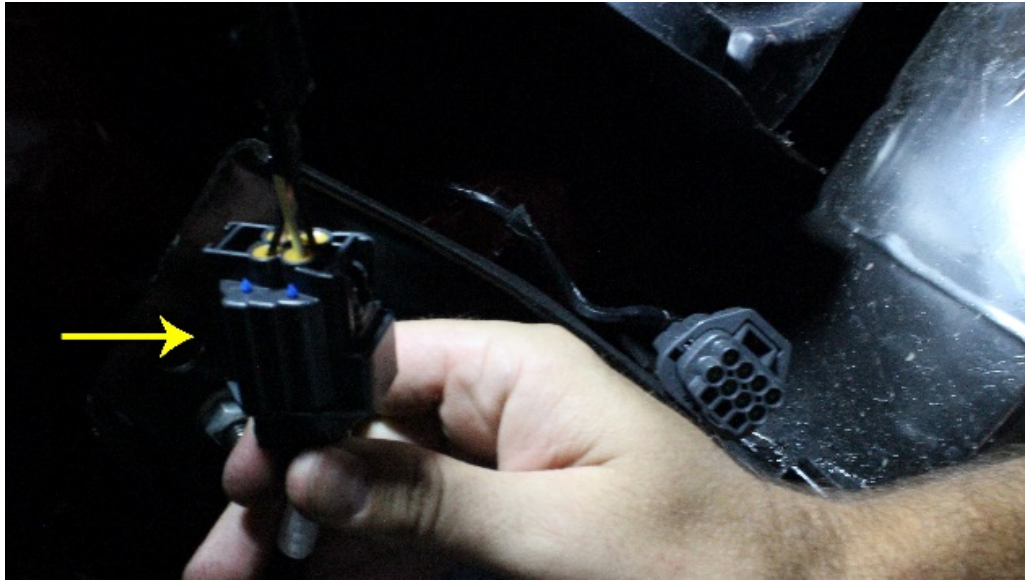
A (1 : 5)

AL-FBM11DGN-RT Installation Instructions

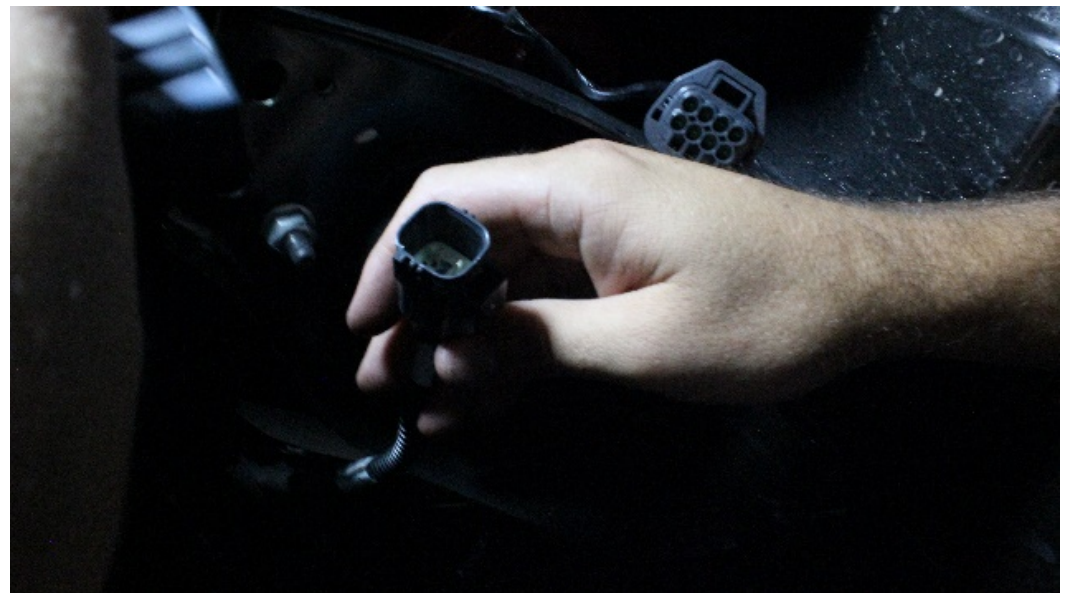
1. Remove front portion of inner fender liners. There are 3 screws and 2 plastic push clips that hold the front portion of the plastic fender liners in. Remove the passenger and driver side inner fender liners and set aside.



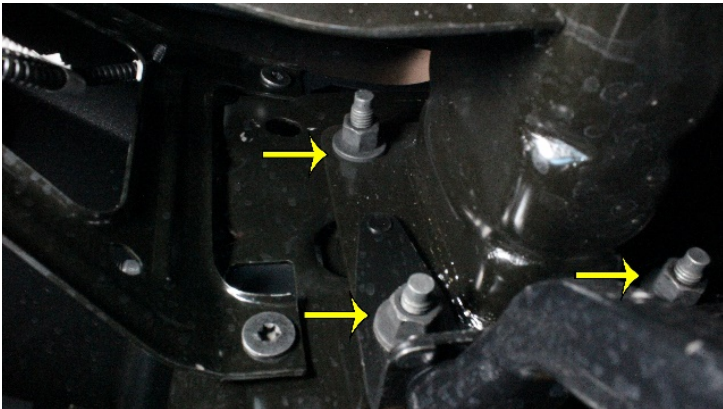
2. Unplug the fog light harness. On the driver side behind the fog light is a main fog light wiring plug attached to the bumper.



Unplug this harness.



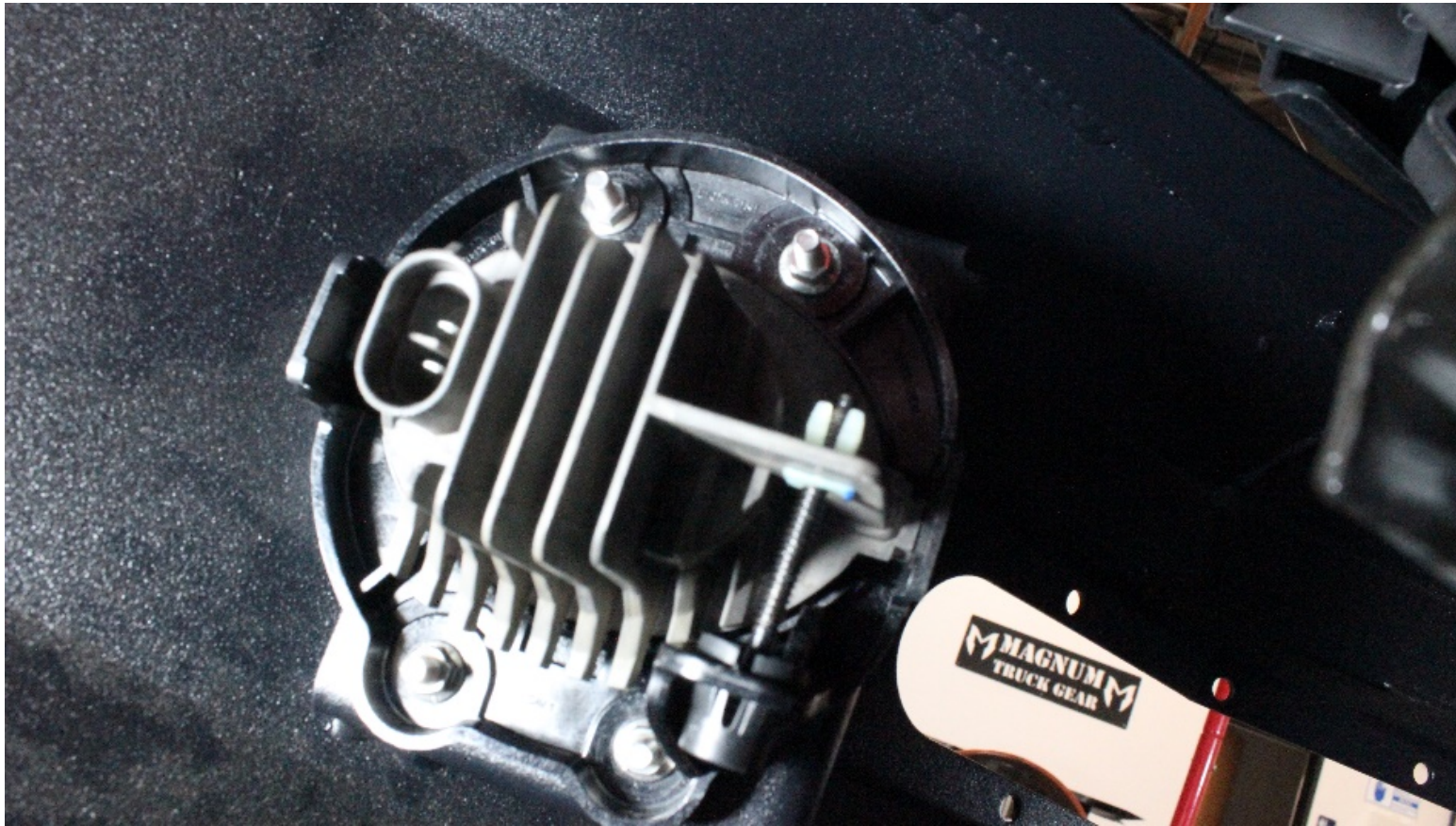
3. There are 3 nuts on each frame rail that hold the bumper to the frame.



Remove these 6 nuts and the bumper from the truck.



4. Once the OE bumper is removed, remove the factory fog lights and fog light wiring harness from the OE bumper. These will be installed in the Alumilite bumper.
5. Using the provided 5mm screws and flange washers, install the OE fog lights into the Magnum bumper.



Do not install the wiring harness until the bumper is installed on the truck.

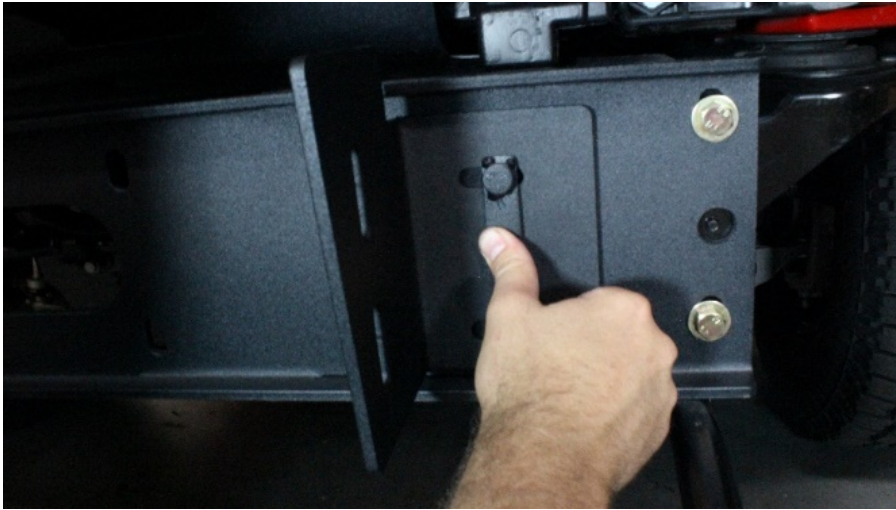
6. Install the winch carrier to the frame of the truck (notice the orientation of the holes in the winch plate)



using the provided 10mm bolts and hardware. Install the bolts into the outer most holes in the winch carrier and fully tighten.



7. If installing a winch, mount the winch to the winch plate and attach with hardware provided with the winch. Run the winch cable through the large center slot in the winch plate.
8. Install the bumper outside brackets over the winch carrier with the provided t-bolts. Notice the orientation of the brackets and t-bolts. Do not fully tighten until the bumper is installed and aligned. Slide the brackets towards the middle of the truck so the bumper will clear them easily.



9. With assistance mount the Alumilite bumper onto the outside brackets



and attach with the provided 10mm T-Bolts. Insert the T-bolts through the mesh vent opening in the side of the bumper and through the bumper inside bracket and outside bracket. Do not fully tighten the T-bolts yet.

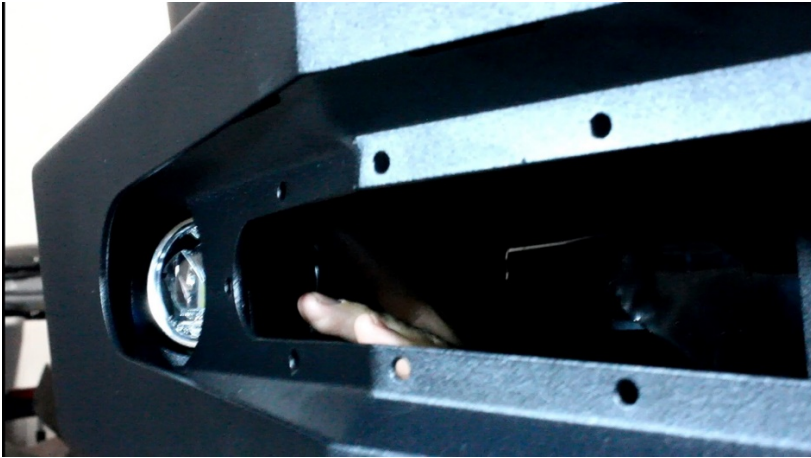


10. With the bumper loose fit on the truck, align the bumper side to side and front to back. Once aligned fully tighten all the hardware on all 4 t-bolts.



11. With the bumper fully tightened, run the fog light wiring harness through the bumper and plug in each fog light and the harness to the main plug. Also, run the winch cable through the center slot in the bumper.

12. Lastly, using the provided 5mm hardware, install the side and center mesh panels into the bumper.



The center mesh panel is designed with tabs that will fit a Single Row 20 Inch LED Light Bar with Stud Mounts and Dimensions of L 21 5/8" x H 1 5/8" x W 3", behind the mesh, if desired.