



Thank you for purchasing this ICON Vehicle Dynamics product. Please read through this entire document before proceeding with installation. If you are not confident in your mechanical skills, please seek the help of a professional to perform the installation. Check your packages immediately upon arrival to ensure that everything listed is included, and to check for damage during shipping. If anything is missing or damaged, or if you need technical assistance with any aspect of this installation, call (951) 689-ICON as soon as possible.



APPLICATION

These installation instructions apply to the following products:

56221 2016-UP TACOMA REAR BUMPER

COMPONENTS INCLUDED

- (1) 16-Up Tacoma Rear Bumper
- (1) 16-Up Tacoma Driver Frame Mount
- (1) 16-Up Tacoma Pass Frame Mount
- (2) 16-Up Tacoma Rear Bumper Nut Plate

HARDWARE INCLUDED

- (6) 7/16-14 X 1 Gr8 Hex Head Cap Screw
- (6) 7/16 SAE Gr8 Flat Washer
- (4) 1/4-20 X 3/4 SS Button Head Cap Screw
- (4) 1/4 SAE Gr8 Flat Washer
- (4) 1/4-20 Gr8 Nylon Insert Lock Nut
- (4) 10-32 X 1/2 SS Button Head Cap Screw
- (4) #10 SAE Gr2 Flat Washer
- (4) 10-32 Nylon Insert Lock Nut
- (1) Tow Wire Connector Plate

TECH NOTES

NOTE: These installation instructions are based on a clean installation on to a stock vehicle. Previously modified vehicles may require additional steps.

TOOLS REQUIRED

- 10mm, 14mm, 7/16", 1/2" & 9/16" wrenches and/or sockets with ratchet
- Flat screwdriver or body panel removal tool
- Torque wrench
- Suitable cutting tool (cutoff wheel, reciprocating saw, etc.)

IMPORTANT NOTICES - PLEASE READ FIRST

- ✓ **READ ALL INSTRUCTIONS THOROUGHLY FROM START TO FINISH BEFORE BEGINNING INSTALLATION! IF THESE INSTRUCTIONS ARE NOT PROPERLY FOLLOWED SEVERE FRAME, SUSPENSION AND TIRE DAMAGE MAY RESULT TO THE VEHICLE!**
- ✓ **ICON VEHICLE DYNAMICS RECOMMENDS ALL INSTALLATION TO BE PERFORMED BY A PROFESSIONAL SHOP/SERVICE TECHNICIAN. PRODUCT FAILURE CAUSED BY IMPROPER INSTALLATION WILL NOT BE COVERED UNDER ICON'S WARRANTY POLICY.**

INSTALLATION INSTRUCTIONS

1. Ensure the vehicle is placed on a flat, level surface with the transmission in PARK, the tires chocked, and the emergency brake ON. Wear safety glasses from this point forward.
2. Observe the underside of the rear bumper end-caps and note the three (3) plastic clips. Use a flat screwdriver to lift the center pin of each clip and remove them.

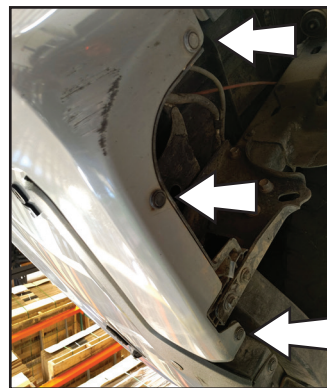


FIG. 1



FIG. 2

3. Observe the black plastic step cover that covers the top and center of the bumper. There are two



more clips on the underside of this cover. Remove these two clips.



FIG. 3



FIG. 4

- 4. Remove the rear license plate and the push pin behind the plate.
- 5. Remove the trailer tow wiring connector by releasing the clips on the back side of the bumper.



FIG. 5

- 6. Remove the license plate illumination lamp and disconnect it from the vehicle's wiring harness. Use a flat blade screwdriver to depress the clips on the wiring harness plug to disconnect it.



FIG. 6

- 7. Remove the black plastic step cover. This may require some effort as there are a number of blind body clips that will need to release as the cover

is pulled away. Once the cover has been removed, disconnect the backup sensors (if applicable).

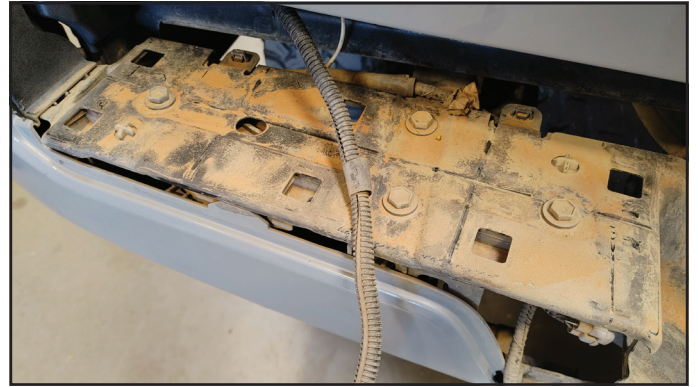


FIG. 7

- 8. Use a 12mm wrench or socket and ratchet to remove the ten (10) bolts from the top surface of the metal step plate.



FIG. 8

- 9. Use a 12mm wrench or socket and ratchet to remove the four (4) bolts from the bottom of the bumper at each bumper mount bracket. There are two (2) such bolts on each side.



FIG. 9

- 10. Release the wiring harness retainer clips from the back edge of the metal step plate. Use a pair of needle-nose pliers to pinch the tangs of the retainer clip and push it through the hole in the



plate. There are four (4) such clips along the top and four (4) along the back side of the plate. Lift the metal step plate to gain access to and release the remaining wiring harness clips.



FIG. 10

- 11. Remove the plastic corner fascia to gain access to the radar and backup sensor (if applicable).



FIG. 11

- 12. Disconnect backup sensor once the fascia is removed. Un-bolt and disconnect the radar module. Remove the wiring clip from above and behind the radar module.



FIG. 12

- 13. Remove the backup sensors by pushing it through the hole from the back side.



FIG. 13

- 14. Working on one side at a time, use a 17mm wrench or socket and ratchet to remove the 4 rear-most bolts from the hitch mount, leaving the single forward-most bolt in place.



FIG. 14

- 15. Install the appropriate (Driver or Passenger) Frame Mount using the factory hitch mount bolts. Thread the bolts in but leave them loose so the bumper position may be adjusted in subsequent steps. Repeat this process for the opposite side Frame Mount.



FIG. 15



- 16. Use an 1/8" hex key and 3/8" wrench to install the supplied Tow Wire Connector Plate onto the ICON bumper. Orient the plate with the rounded section facing up. Attach using the supplied 10-32 X 1/2 SS Button Head Cap Screws, Flat Washers and Lock Nuts.



FIG. 16

- 17. Use a 5/32 hex key and 7/16 wrench to mount the license plate to the ICON bumper using the supplied 1/4-20 X 3/4 SS Button Head Cap Screws, Flat Washers and Lock Nuts.

- 18. If available, install flush-mount LED pod lights (not included or sold by ICON) into the recessed light mounts on either side of the bumper.

- 19. With the help of a friend, lift the bumper into place on the vehicle, with the bumper's mounting flanges between the vehicle's frame and the previously-installed Frame Mounts. If the factory tow hitch is not present, place the bumper's mounting flanges on the outside of the Frame Mounts. Place the supplied Nut Plates on the opposite side of each flange and secure using the six (6) supplied 7/16-14 X 1 Gr8 Hex Head Cap Screws and Flat Washers (3 per side).



FIG. 17

Note that the bolt holes in the Frame Mounts are slotted to allow for some adjustment in aligning the bumper. Do not fully tighten the 7/16-14 X

1 Gr8 Hex Head Cap Screws at this time, as the bumper will be aligned later in the procedure.

- 20. Fish the license plate wiring plug, on the vehicle's wiring harness, through the square license plate lamp hole in the side of the bumper's step well. Connect the license plate lamp to the wiring harness, then push the lamp assembly into place in the bumper. Connect the tow wiring receptacle to the wiring harness and push it into its mount, making sure the metal clips snap into place.



FIG. 18

- 21. Install the backup sensors into the provided holes in the ICON bumper. Clean the sensors and apply a small amount of mild adhesive such as "shoe glue" or silicon onto the plastic mounting barrel of the sensor. Push the sensor into place and connect the wiring harness to it on the back side of the bumper. Due to the thickness of the bumper material, the dab of adhesive will help to keep the sensor in place.



FIG. 19



FIG. 20

- 22. If LED pod lights were installed into the bumper, complete the associated electrical connections for them.

- 23. Center and align the bumper while tightening all fasteners using a 17mm (OE hitch mount bolts and 5/8" (ICON Bumper to Mount Bracket bolts) wrench or socket and ratchet. Ensure that the



bumper is visually centered as well as level with the vehicle's body.



FIG. 21

NOTE: If the vehicle is older or has been used hard, the bed may need to be re-centered on the frame by loosening the 6 bolts in the bed and shifting the bed left or right until centered.

24. VERIFY ALL FASTENERS ARE PROPERLY TORQUED BEFORE DRIVING VEHICLE.

Congratulations! Your installation is complete.

RETORQUE ALL NUTS, BOLTS AND LUGS AFTER 100 MILES AND PERIODICALLY THEREAFTER.

**LIMITED LIFETIME WARRANTY**

ICON Vehicle Dynamics warrants to the original retail purchaser who owns the vehicle on which the product was originally installed. ICON Vehicle Dynamics does not warrant the product for finish, alterations, modifications and/or installation contrary to ICON Vehicle Dynamics instructions. ICON Vehicle Dynamics products are not designed, nor are they intended to be installed on vehicles used in race applications, for racing purposes or for similar activities. (A "race" is defined as any contest between two or more vehicles, or a contest of one or more vehicles against the clock, whether or not such contest is for a prize). This warranty does not include coverage for police or taxi vehicles, race vehicles, or vehicles used for government or commercial purposes. Also excluded from this warranty are sales outside of the United States of America and Canada.

ICON Vehicle Dynamics' obligation under this warranty is limited to the repair or replacement, at ICON Vehicle Dynamics' discretion, of the defective product. Any and all costs of removal, installation or re-installation, freight charges and incidental or consequential damages are expressly excluded from this warranty. Items that are subject to wear are not considered defective when worn and are not covered.

ICON Vehicle Dynamics components must be installed as a complete kit as shown in our current application guide. Any substitutions or exemptions of required components will immediately void the warranty. Some finish damage may happen to parts during shipping and is not covered under warranty.

This warranty is expressly in lieu of all other warranties expressed or implied. This warranty shall not apply to any product that has been improperly installed, modified or customized subject to accident, negligence, abuse or misuse.

**ICON VEHICLE DYNAMICS®**
PERFORMANCE SUSPENSION SYSTEMS AND SHOCK ABSORBERS

7929 Lincoln Ave. Riverside, CA 92504 Phone: 951.689.ICON Fax: 951.689.1016
www.iconvehicledynamics.com

**FOLLOW US ON FACEBOOK!**