

# **HUSKY** **WeatherBEATER™** **Custom Vehicle Floor Protection**

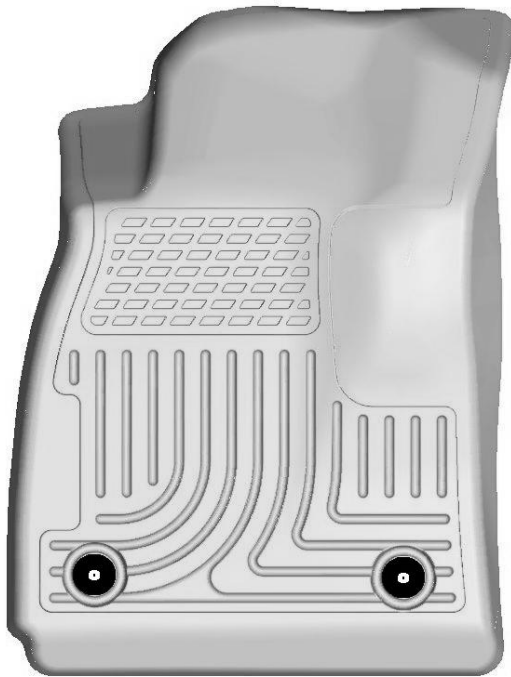
## CARE AND USE INSTRUCTIONS

---

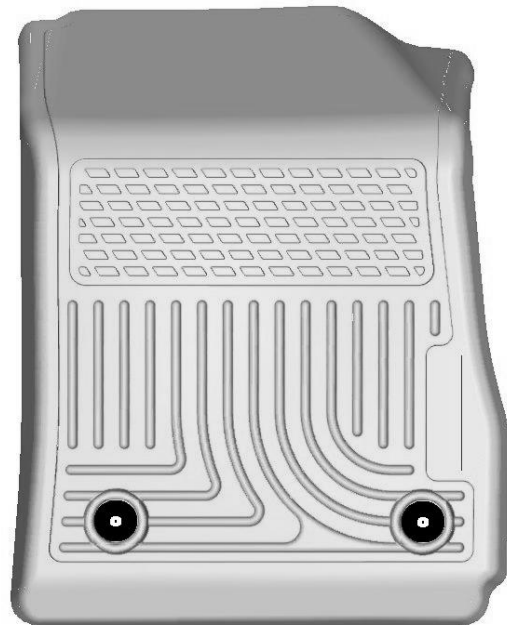
Thank you for selecting a WeatherBeater™ Floor Liner from Winfield Consumer Products. Your new front floor liners are custom molded to fit your Chevrolet Impala. The liners are made to take the place of your factory floor mats. **For correct fit, it is necessary to remove the factory floor mats before installing your new floor liners.** However, do not remove the factory-installed carpeting.

Your liners are made from an engineering resin that is lightweight and extremely tough and durable. The easiest way to clean your liners is with a damp cloth or sponge. If using a cleaner, 409® or Glass Plus® work well. Use of Armor All®, Son-of-a-Gun® or similar items is discouraged as these products make the liners slick.

### INSTALLATION INSTRUCTIONS FOR YOUR CHEVROLET IMPALA FRONT HUSKY LINERS® WeatherBeater™ FLOOR LINERS



LEFT OR DRIVER'S SIDE



RIGHT OR PASSENGER'S SIDE

TO EASE INSTALLATION OF YOUR IMPALA FRONT LINERS, FIRST MOVE THE FRONT SEATS TO THEIR MOST REARWARD POSITION. WITH THIS DONE, INSTALL THE LINERS ORIENTED AS SHOWN ABOVE. NOTE THAT THE DRIVER'S SIDE LINER ATTACHES TO THE FACTORY MAT RETAINER POSTS. SIMPLY SNAP THE LINER OVER THE POSTS AT THE TWO CLIP LOCATIONS IN EACH LINER. WITH THE INSTALLATION COMPLETE, READJUST THE FRONT SEATS AS DESIRED.

# **HUSKY** **Weather**BEATER™ **Custom Vehicle Floor Protection**

## CARE AND USE INSTRUCTIONS

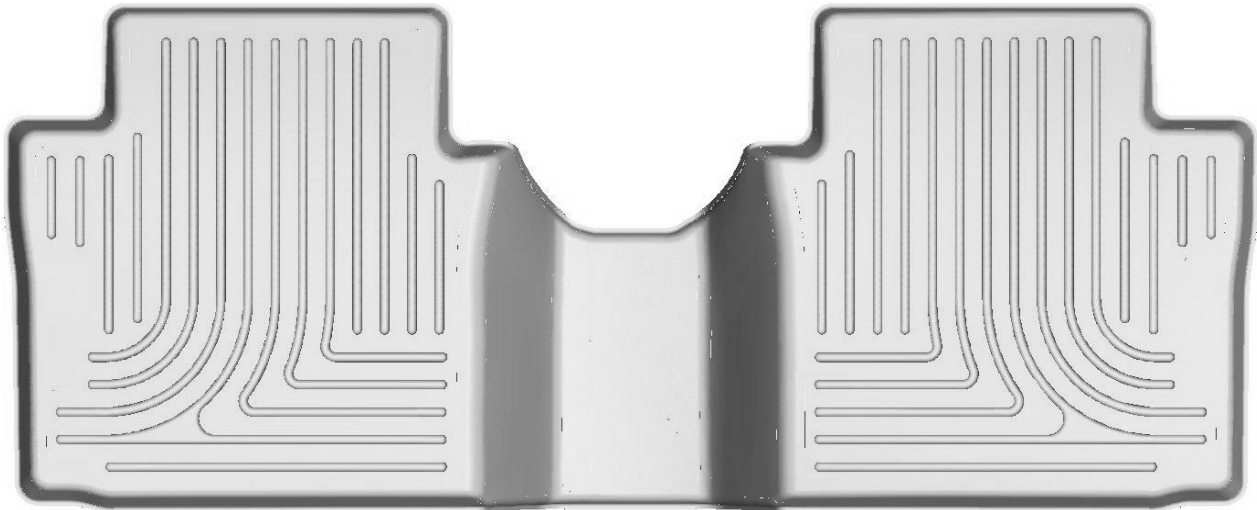
---

Thank you for selecting a WeatherBeater™ Floor Liner from Winfield Consumer Products. Your new rear floor liner is custom molded to fit your Chevrolet Impala. The liner is made to take the place of your factory floor mats. **For correct fit, it is necessary to remove the factory floor mats before installing your new floor liners.** However, do not remove the factory-installed carpeting.

Your liner is made from an engineering resin that is lightweight and extremely tough and durable. The easiest way to clean your liner is with a damp cloth or sponge. If using a cleaner, 409® or Glass Plus® work well. Use of Armor All®, Son-of-a-Gun® or similar items is discouraged as these products make the liner slick.

## INSTALLATION INSTRUCTIONS FOR YOUR CHEVROLET IMPALA REAR SEAT HUSKY LINERS® WeatherBeater™ FLOOR LINER

FRONT OF VEHICLE



TO EASE INSTALLATION OF YOUR IMPALA SECOND SEAT LINER, FIRST MOVE THE FRONT SEATS TO THEIR MOST FORWARD POSITIONS. WITH THIS DONE, INSERT LINER IN YOUR VEHICLE AS SHOWN IN THE IMAGE ABOVE. ONCE THE LINER IS INSTALLED, REPOSITION THE FRONT SEATS AS DESIRED.