

# **HUSKY** **WeatherBEATER™** **Custom Vehicle Floor Protection**

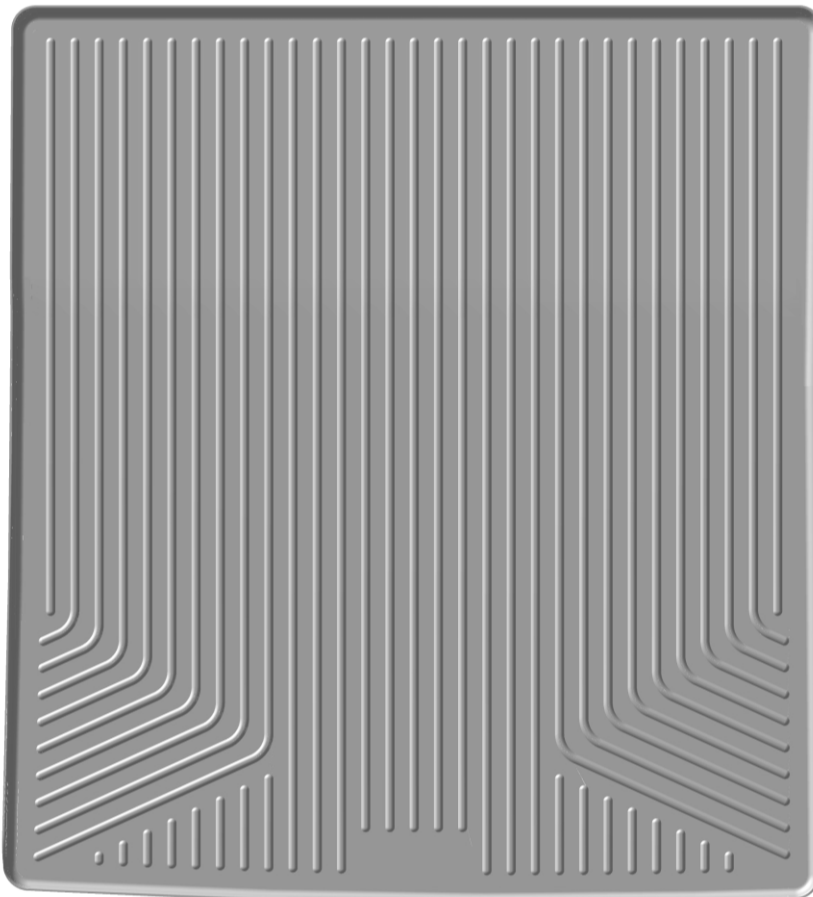
## CARE AND USE INSTRUCTIONS

---

Thank you for selecting a WeatherBeater™ Floor Liner from Winfield Consumer Products. Your new cargo liner is custom molded to fit your vehicle. Upon removal from the box the liner will not unroll and lay completely flat. This is normal and only temporary. Just place the liner on the floor or in the back of your vehicle with a weight in each corner (a book works well). After about 15 minutes, your liner will remain flat. In colder climates, this “relaxing” may take longer; moving the liner to a heated area will accelerate the process.

Your liner is made from an engineering resin that is lightweight and extremely tough and durable. The easiest way to clean your liner is with a damp cloth or sponge. If using a cleaner, 409® or Glass Plus® work well. Use of Armor All®, Son-of-a-Gun® or similar items is discouraged as these products make the liner slick.

## INSTALLATION INSTRUCTIONS FOR YOUR CHEVROLET TAHOE & GMC YUKON HUSKY LINERS® WeatherBeater™ CARGO LINERS



YOUR NEW CARGO LINER FITS TO THE BACK OF THE SECOND ROW OF SEATS OVER THE FOLDED FLAT THIRD ROW OF SEATS.