

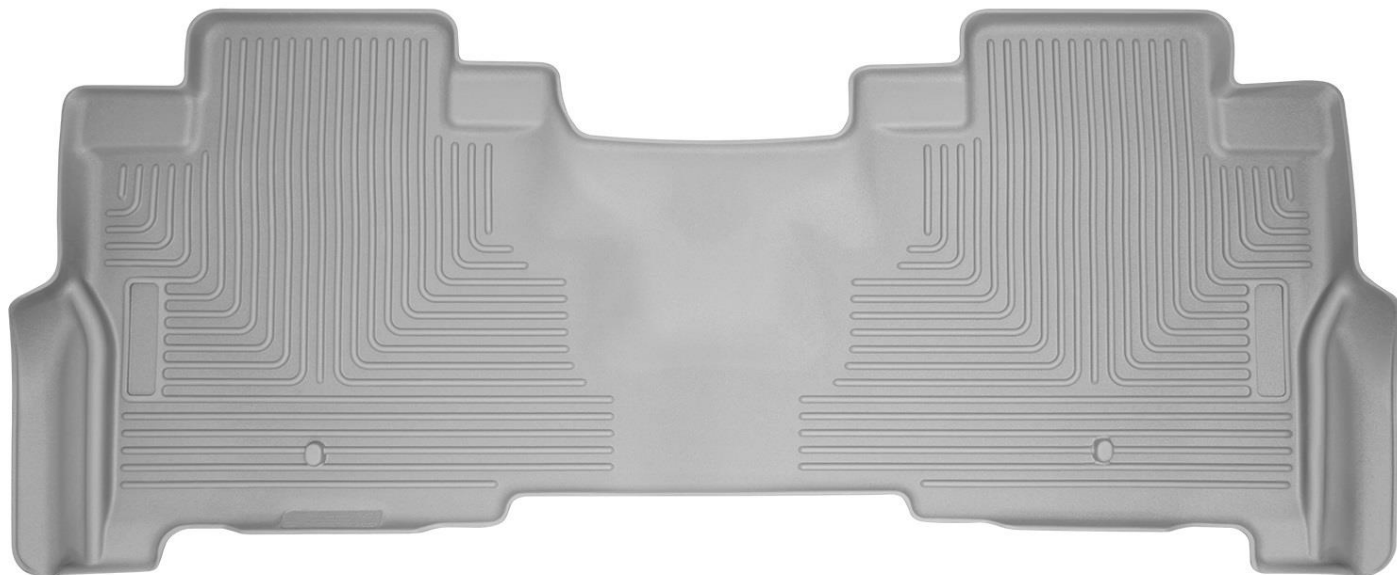
HUSKY **WeatherBEATER™** **Custom Vehicle Floor Protection**

CARE AND USE INSTRUCTIONS

Thank you for selecting a WeatherBeater™ Floor Liner from Winfield Consumer Products. Your new 2nd seat liner is custom molded to fit your Ford Expedition / Ford Expedition Max. The liner is made to take the place of your factory floor mats. **For correct fit, it is necessary to remove the factory floor mats before installing your new floor liners.** However, do not remove the factory-installed carpeting.

Your liner is molded using an engineering resin that is lightweight and extremely tough and durable. The easiest way to clean your liner is with a damp cloth or sponge. If using a cleaner, 409® or Glass Plus® work well. Use of Armor All®, Son-of-a-Gun® or similar items is discouraged as these products make the liner slick.

SECOND SEAT FLOOR LINER INSTALLATION INSTRUCTIONS FOR FORD EXPEDITION & EXPEDITION MAX MODELS WITH 2ND ROW BENCH SEATS



PRIOR TO INSTALLING YOUR 2nd SEAT LINER, SLIDE BOTH FRONT ROW SEATS COMPLETELY FORWARD AS THIS WILL ALLOW EASIER ACCESS TO THE FLOOR IN THE 2ND ROW. WITH THIS DONE, INSTALL THE LINER, POSITIONING IT AS SHOWN ABOVE. WITH THE LINER INSTALLED, REPOSITION THE FRONT SEATS AS DESIRED.