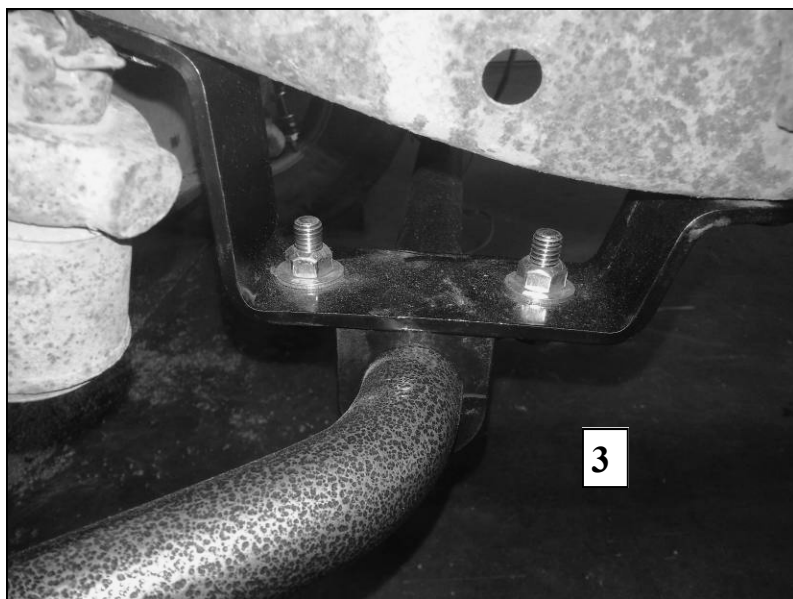
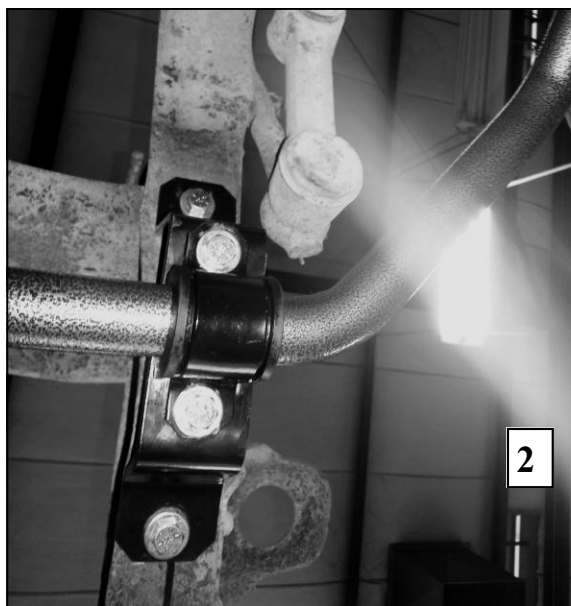


## INSTALLATION INSTRUCTIONS FRONT STABILIZER BAR

Thank you for purchasing a quality Hellwig Product.

PLEASE READ THIS INSTRUCTION SHEET COMPLETELY BEFORE STARTING YOUR INSTALLATION



# Hellwig PRODUCTS.com

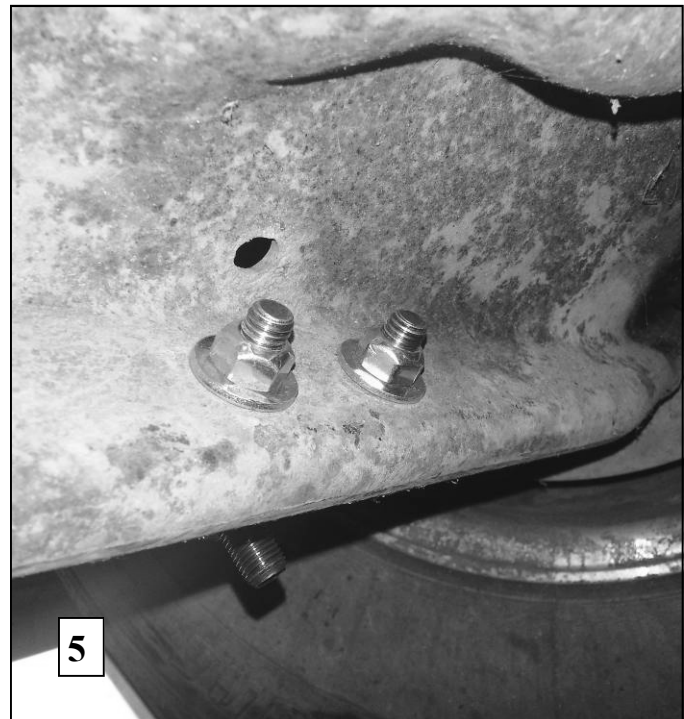
559-734-7451 800-367-5480 TechSupport@HellwigProducts.com

**SAFETY: BEFORE STARTING YOUR INSTALLATION, BE SURE TO SET PARKING BRAKE AND CHOCK TIRES.**

**NOTE: TO EASE INSTALLATION AND TO PROPERLY ADJUST THE BAR, THE WEIGHT OF THE VEHICLE MUST BE ON THE SUSPENSION, AS IF DRIVING DOWN THE ROAD. DO NOT RAISE VEHICLE BY THE FRAME.**

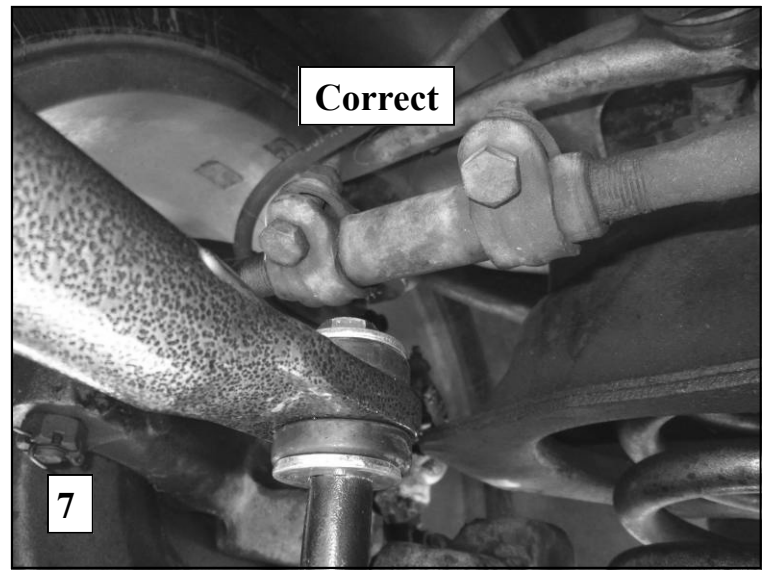
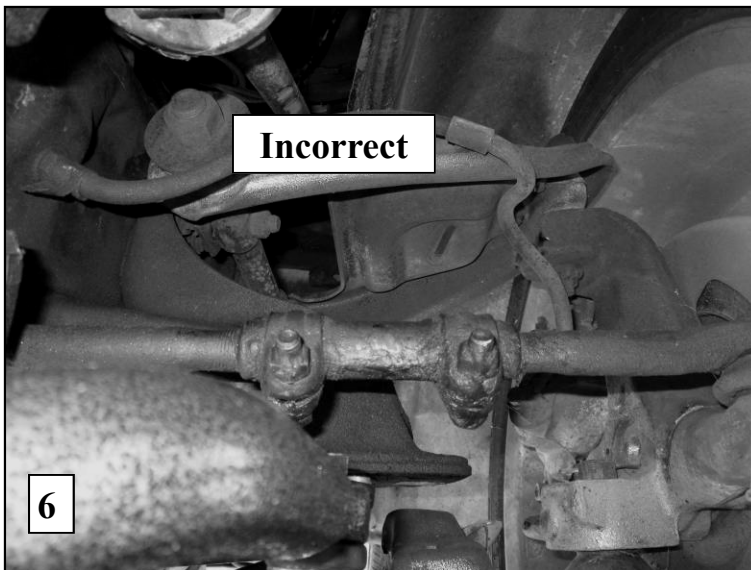
**NOTE: THIS KIT INCLUDES LOCK NUTS WHICH REQUIRES TIGHTENING WITH A WRENCH AFTER BEING STARTED BY HAND.**

1. If the vehicle is equipped with a factory front sway bar, remove the sway bar.
2. For vehicles with a factory front sway bar, you can either reuse the already installed factory frame bracket or replace it with the new, Hellwig bracket.
3. For vehicles without a factory front sway bar, locate the 2 holes on the underside of the frame and bolt the Hellwig bracket to the frame using the 3/8" hardware and washers on both sides. On some vehicles, a cross member will be riveted to one of the frame bracket holes. You will need to grind off the rivet and use the 3/8" bolt through our bracket and the factory crossmember.
4. Lubricate the inside of the D-bushing and install it on the Hellwig sway bar. Place the U-plate over the bushing.
5. Bolt the U-plate to the frame bracket using the 3/8" hardware as shown in photos 1-3. Leave loose at this time. Center the bar in the bushings.
6. Assemble the end link as shown in Photo 4. With the weight on the vehicle and the end link vertical, mark through the two holes in the control arm bracket onto the control arm.
7. Move the end link out of the way and drill 3/8" holes where you marked.



8. Reassemble the end link and bolt the bracket to the control arm as shown in Photos 4-5. Tighten the end link bolt until the bushings just start to bulge.
9. Torque all the remaining 3/8" bolts to 35 ft-lbs.
10. Confirm your steering arm adjuster bolts are facing up (as in photo 7) and not down (as in Photo 6). If necessary, loosen your nuts and rotate them to improve clearance to the sway bar.
11. Bounce the vehicle and check clearances to all undercarriage components.
12. Drive the vehicle and recheck all toques and that the sway bar is centered.
13. After one week of driving recheck your installation and recheck on a regular basis thereafter.

**ATTENTION INSTALLER: BE SURE THAT THE CUSTOMER RECEIVES THIS INSTRUCTION SHEET, ALL IMPORTANT NOTE CARDS AND THE WARRANTY FORM**



### **Maintenance and Inspection:**

Your Hellwig Suspension Product is built to last. However, as with all vehicle systems, it requires routine inspection. Inspect your Hellwig installation looking for secure hardware and tight fitting brackets and bushings. If you do not perform this inspection, have your professional mechanic inspect as described.

# Hellwig Sway Bar General Information

These instructions are meant to be a general guide for installing Hellwig Products Co. sway bars. Hellwig Products Co. Inc. assumes no liability for the actual installation process. Consumers should apply common automotive safety practices when working on any vehicles. DO NOT put yourself in a position where if the vehicle should move unexpectedly, you may be seriously hurt.

Hellwig suspension products are designed for ease of installation with standard tools. However, access to a jack, jack stands, and work lights may provide added assistance during your installation. As described in Hellwig installation instructions many fasteners require proper tension or torque. Use of a torque wrench will verify proper torque for this requirement.

Your Hellwig Suspension Product is built to last. However, as with all vehicle systems it requires routine inspection. Inspect your Hellwig installation looking for secure hardware and tight fitting brackets and bushings. If you do not perform this inspection, have your professional mechanic inspect as described.

## **It is recommended to install sway bars on a vehicle with the weight of the vehicle on the wheels/tires**

If raising the vehicle off the floor to install the anti-sway bar, always support the vehicle with jack stands at both frame rails and the rear axle before working underneath. Ensure that the jack stands are securely positioned, and are rated at or above the weight of the vehicle.

The installer must read the instructions and use all bolts and parts supplied. Use only the parts supplied by Hellwig to install this kit.

On older vehicles it may be necessary to deal with rusty or difficult fasteners. Normally quality penetrating oil applied to difficult fasteners ahead of time will help. An air impact wrench may also help with loosening these bolts and nuts

It may be necessary to clean road debris and dirt from areas affected by this installation.

Occasionally a BUILDERS MODIFICATION will be encountered when installing this product. Do not attempt to modify the vehicle or the Hellwig product you are installing and call Hellwig Products Company 1-800-367-5480 for a recommendation

Regardless of year, make and model, a wide range of options and aftermarket products may or may not interfere with the Hellwig installation. It is the installer's responsibility to make certain that equipment is not damaged once the suspension travels through the full range of motion. Failure to ensure adequate clearance could result in non-warranty property damage, personal injury or even death.

Hellwig Products Company will not be responsible for any damage or injury resulting from any modification or alteration.

Always double-nut bolts and u-bolts when instructed to.

Don't reuse self locking nuts.

Check ALL the fasteners for tightness before and after road testing the vehicle.

Do not use this document for custom fabrication, as it may not show all parts or structural components.

Do not use an air impact wrench when re-installing bolts, as stripped threads may result.

This anti-sway bar is only warranted for the original installation. Installing a used anti-sway bar on another vehicle is not recommended and will void the warranty.

**Never overload your vehicle.** Never exceed the manufacturers GVWR, Gross Vehicle Weight Rating. Your vehicle manufacturer has listed the gross vehicle weight rating (GVWR) on the specification plate on the chassis. On a truck scale with the vehicle in a level state, weigh it when it is fully loaded to determine if you are exceeding the manufacturer's recommended GVWR.

To avoid brake line damage and brake system failure be sure all U-bolts are put UNDER all brake lines, hoses and wiring located on the axles or frame to avoid pinching when tightened as shown in Figure 1 of this sheet. It may be necessary to slightly flex the brake line on the axle to allow clearance for the U-bolts. Be sure to locate the proper position for the U-bolts prior to flexing and then loosen the brake line clamps on the axle to allow enough slack. Double check U-bolts before tightening.

Hellwig Products Co. sway bars are designed to improve stability handling. After test driving, re-check all fasteners for proper tightness and clearances on all undercarriage components. Without all kit components properly tightened or in place, the anti-sway bar will not stabilize the vehicle to its full capability, which may cause reduced cornering ability or other reductions in vehicle handling or performance.