

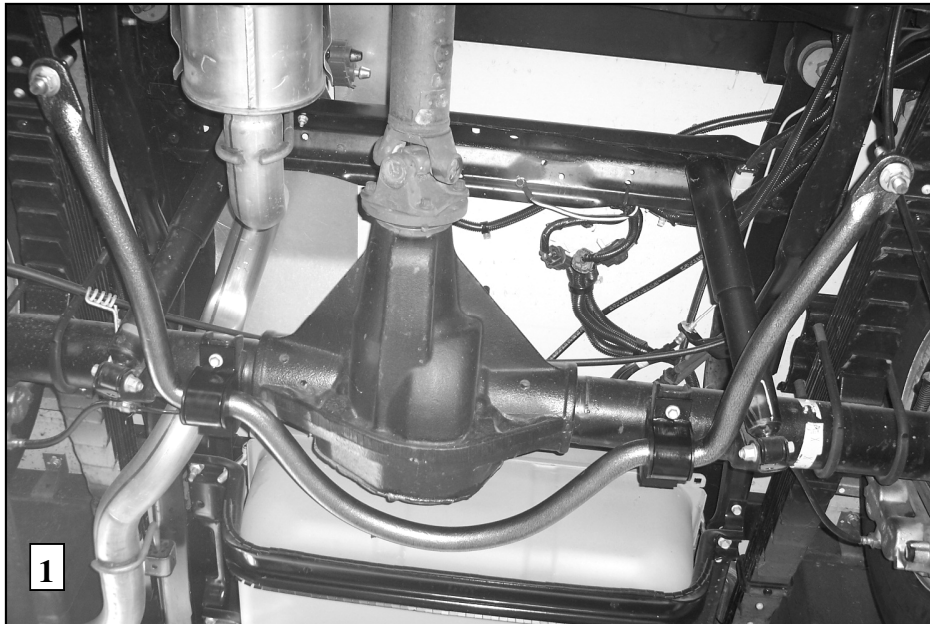
# Hellwig PRODUCTS.com

559-734-7451 800-367-5480 FAX 559-734-7460

## INSTALLATION INSTRUCTIONS Rear Stabilizer Bar 7180

Thank you for purchasing a quality Hellwig Product.

PLEASE READ THIS INSTRUCTION SHEET COMPLETELY BEFORE STARTING YOUR INSTALLATION



### TORQUE TABLE

Bolt Size 3/8"— 35 ft lbs \* Bolt Size 7/16"— 45 ft lbs\* Bolt Size 1/2"—75 ft lbs \*Bolt Size 9/16"— 90 ft lbs

**SAFETY: BEFORE BEGINNING INSTALLATION BE SURE TO SET THE PARKING BRAKE AND CHOCK THE WHEELS.**

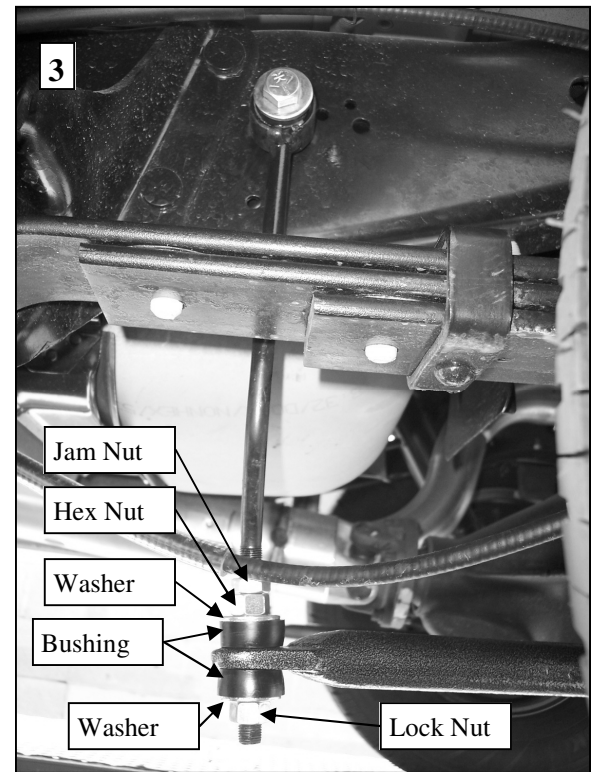
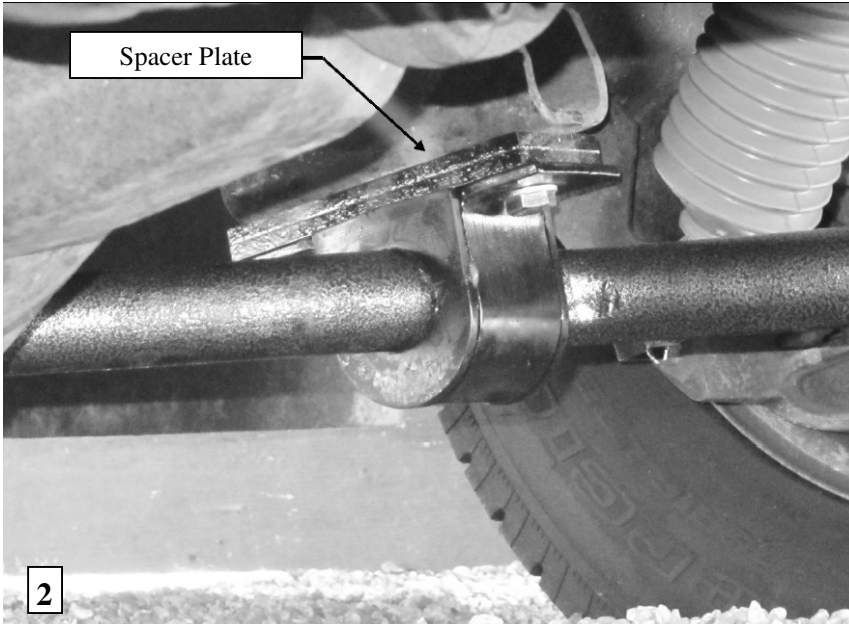
**NOTE: TO EASE INSTALLATION AND PROPERLY ADJUST THE BAR, THE WEIGHT OF THE VEHICLE MUST BE ON THE SUSPENSION AS IF DRIVING DOWN THE ROAD. DO NOT RAISE THE VEHICLE BY THE FRAME.**

### Maintenance and Inspection:

Your Hellwig Suspension Product is built to last. However, as with all vehicle systems, it requires routine inspection. Inspect your Hellwig installation looking for secure hardware and tight fitting brackets and bushings. If you do not perform this inspection, have your professional mechanic inspect as described.

# Hellwig PRODUCTS.com

559-734-7451 800-367-5480 FAX 559-734-7460

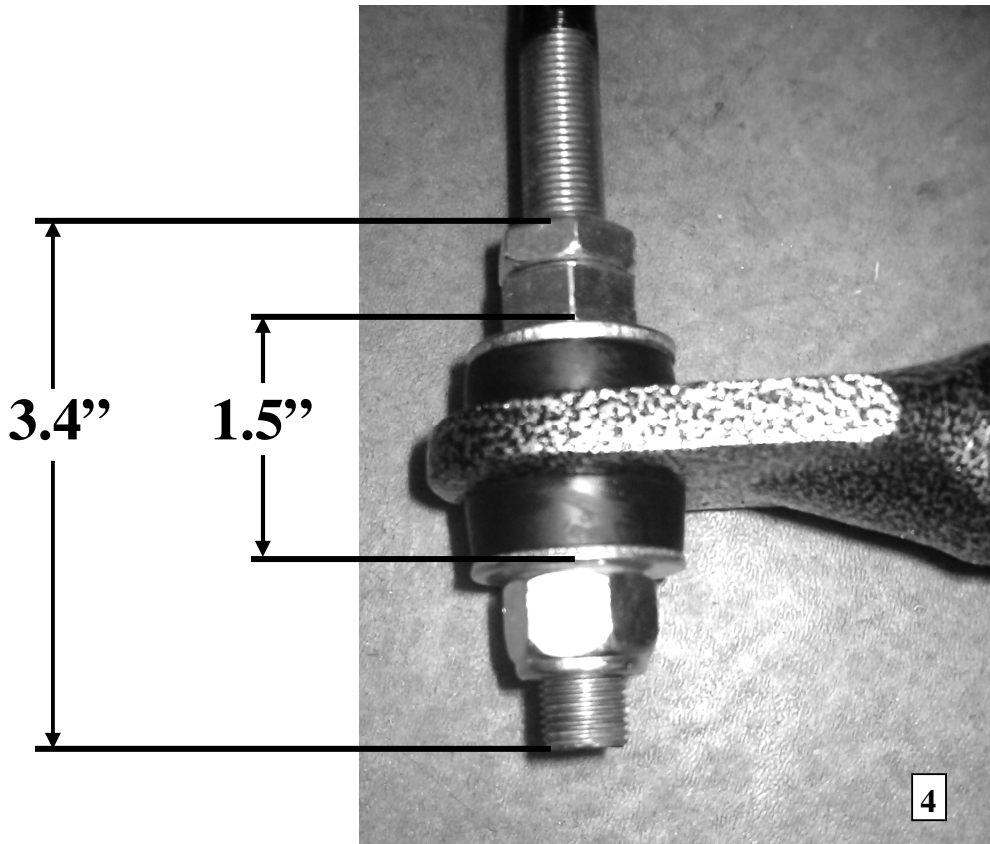


1. Remove the factory installed rear anti-sway bar, end links and all mounting hardware.
2. Lubricate the inside of the D-bushings and place them over the shoulders of the Hellwig sway bar as close to the same location as the factory sway bar. Place the U-plates over the D-bushings.
3. Attach the sway bar to the axle using the M10x40mm bolts and with the spacer plate between the axle and the U-plate. (See PHOTO 2). Leave loose at this time to allow for adjustment later.
4. Assemble the end links by lubricating the outside of the hourglass bushing and pressing it into the end link hoop. Then lubricate the outside of the sleeve and press it into the hourglass bushing.
5. Attach the end link to the frame using the factory bolt that was removed in Step 1.
6. Rotate sway bar arms up and attach to the end link following PHOTO 3, 4 and 5. The arms should be parallel to the ground and the bushings should be tightened to the point where they bulge slightly.
7. Make sure the sway bar is centered and the arms are parallel to the ground. Torque all bolts except the lower end link bolts following the torque table on Page 1 and factory specifications.
8. Bounce the vehicle and check for clearance on all the undercarriage components. Be sure that all nuts and bolts securely tightened. Check and see that all suspension components, wires, fuel and brake lines etc. are all clear of this installation and cannot be damaged. Recheck your installation after one (1) week of driving and periodically thereafter.

**ATTENTION INSTALLER: PLEASE MAKE SURE CUSTOMER RECEIVES THIS INSTRUCTION SHEET, ALL IMPORTANT NOTE CARDS, WARNING CARDS AND THE WARRANTY FORM**

# Hellwig PRODUCTS.com

559-734-7451 800-367-5480 FAX 559-734-7460



Hellwig recommends threading the top jam nut approximately 3.4" down the end link to leave 0.5" of thread exposed after the final lock nut.

The bushings should be tightened until they just start to bulge, at the most 1.5" outside to outside on the washers.

Follow all other directions on the included instruction sheet.