



Front Undertray Kit Part Number: SP-105

Honda 2009-2013 Fit 1.5L

Installation Instructions

For technical inquiries please email us at tech@hpsperformance.com

In the email, please include the following information for faster response:

- Year / Make / Model / Motor of your vehicle.
- If it is a fitment issue, please include pictures showing the fitment problem.
- If there are missing parts, please list the part number(s) from the bill of materials on the 2nd page.
- Optional but recommended – Your contact phone number and preferred call back time.

You can also give us a call via 626-747-9200 for tech support Monday-Friday, 9:00am-5:00pm Pacific Time.

Bill of Materials

Kit Number: SP-105

Line #	Description	Part Number	Qty
1	Front Undertray for Honda Fit	FSP-006	1
2	Steel Flanged Button Head Screw, M5 x 0.80 mm Thread, 25 mm Long	96660A224	5
3	Steel Flanged Button Head Screw, M6 x 1 mm Thread, 25 mm Long	96660A218	2
4	U Clip Nut, M5 x 0.8 mm Thread	96660A218	5
5	U Clip Nut, M6 x 1 mm Thread	HW-UCN-M6-MOD1	2



- Verify the contents of this undertray kit before beginning.
 - o **DO NOT INSTALL IF ANY PARTS ARE MISSING OR DAMAGED.**
 - o CONTACT tech@hpsperformance.com IMMEDIATELY.
 - o WE ARE NOT RESPONSIBLE FOR ANY DAMAGE CAUSED DUE TO IMPROPER INSTALLATION.
- Installation requires moderate mechanical skills. A qualified mechanic is highly recommended.
- Before installing any parts of this undertray kit, please READ THE INSTRUCTIONS THOROUGHLY.
 - o Intricate details are included in these instructions. Failure to follow the instructions will yield poor results.
- For technical inquiries, please email us at tech@hpsperformance.com.

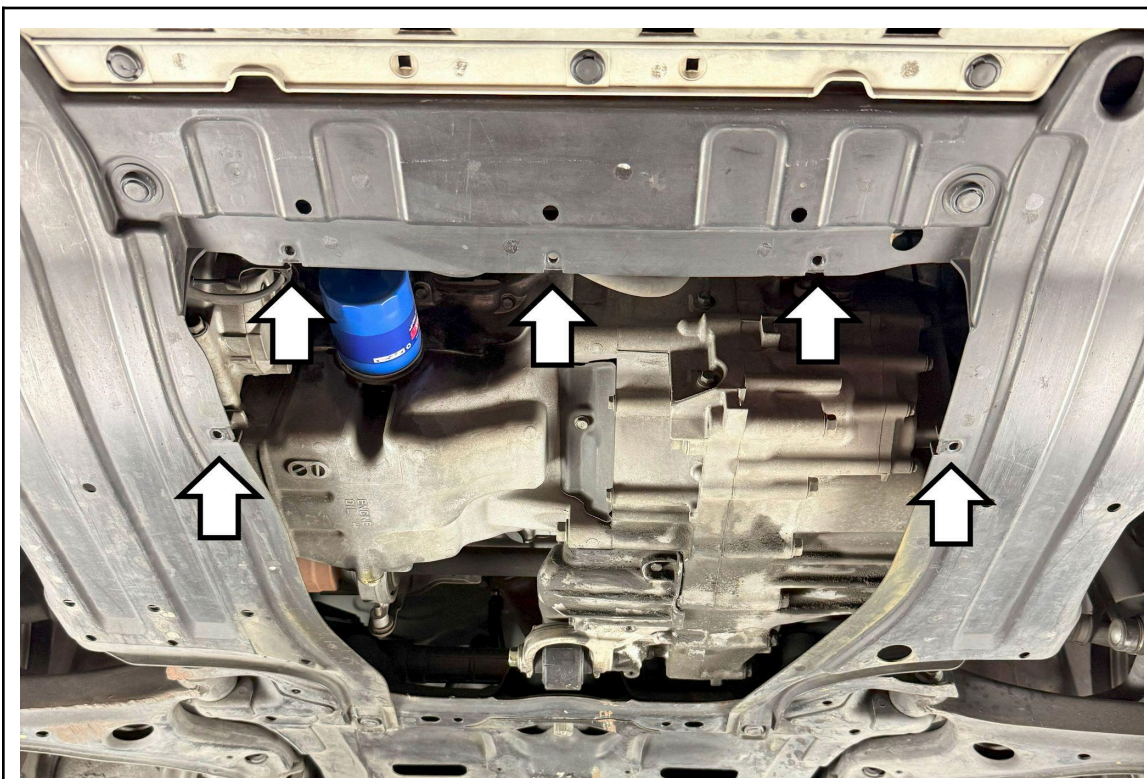
PLEASE READ THE INSTRUCTIONS CAREFULLY BEFORE STARTING!

This installation is not for beginners. Install this product with EXTREME caution! Improper installation of this product can damage vital components of the vehicle! If you are not mechanically inclined, please have a professional automotive technician install this kit.

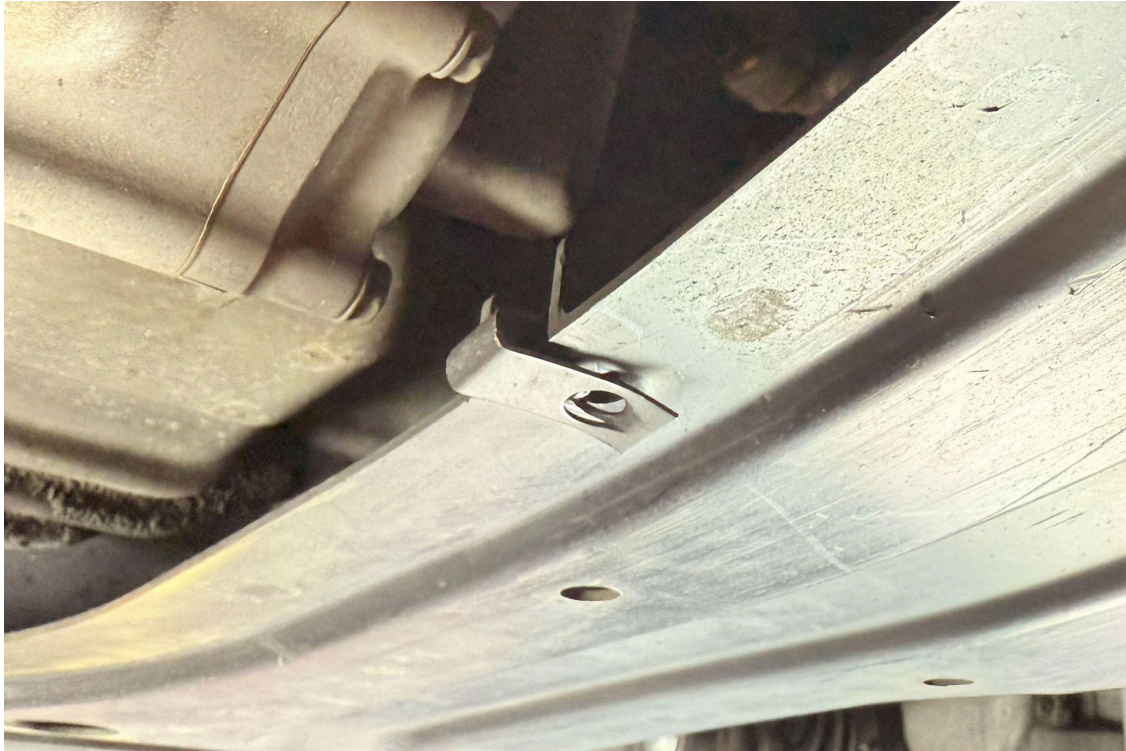
To install this undertray, you will need to access the rear underside of the vehicle. Be sure to follow the vehicle's lifting procedures to prevent damage and take extra precautions whenever working underneath the vehicle.

NOTE: HPS holds no responsibility for any damage that results from misuse of this product.

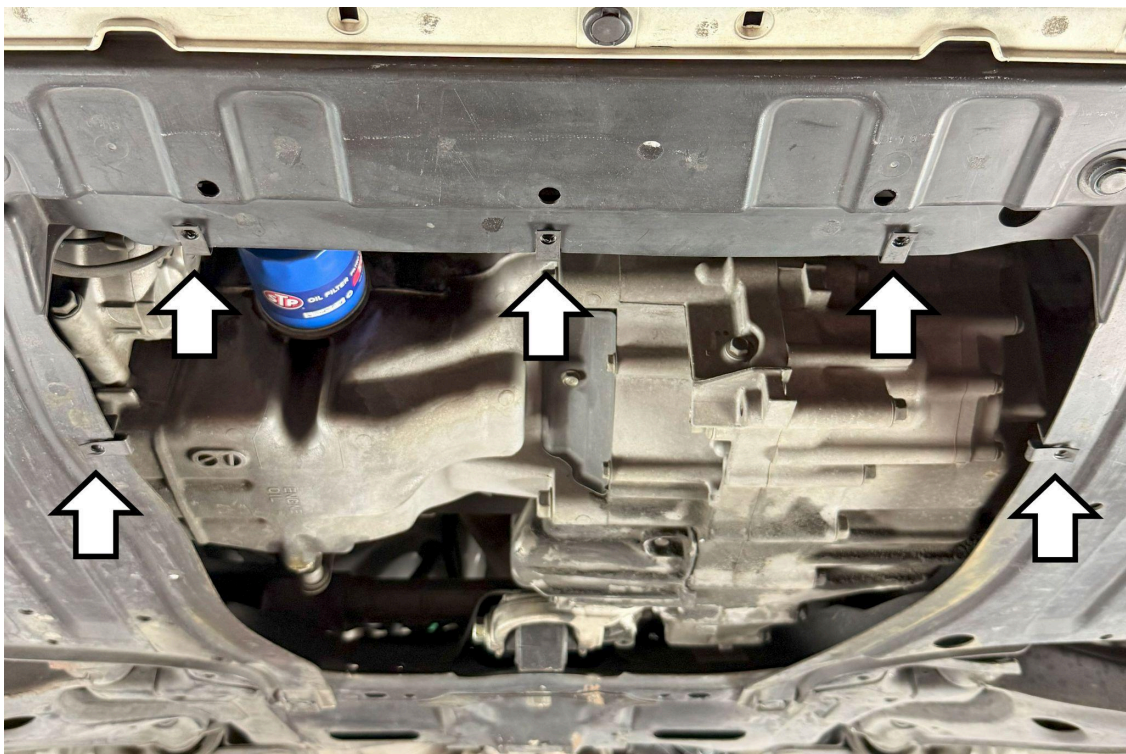
GETTING STARTED



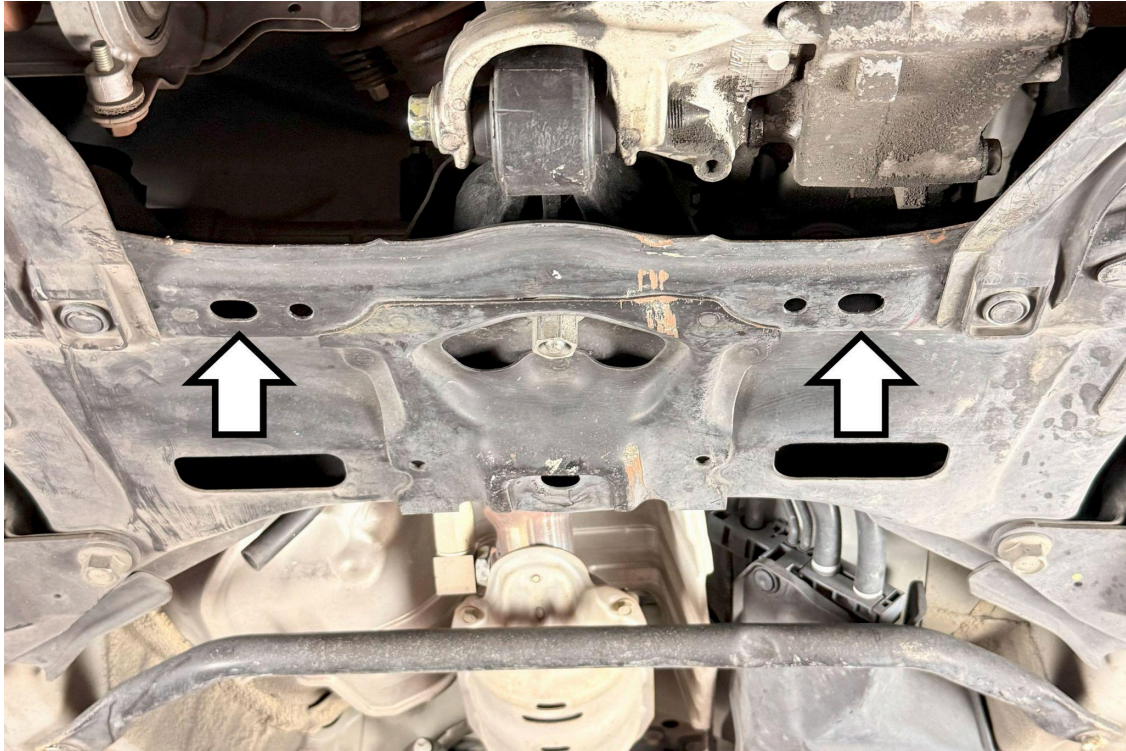
1. Inspect the five mounting points ensuring that they are intact before proceeding. Failure may occur if any of these mounting points are ripped or damaged.



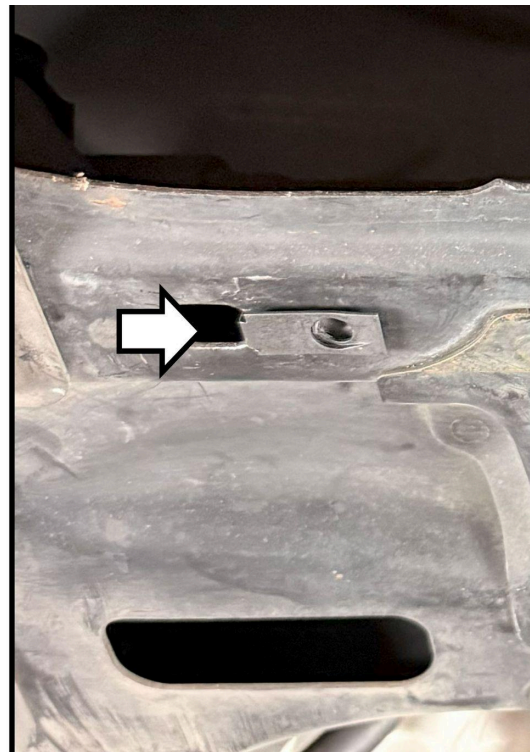
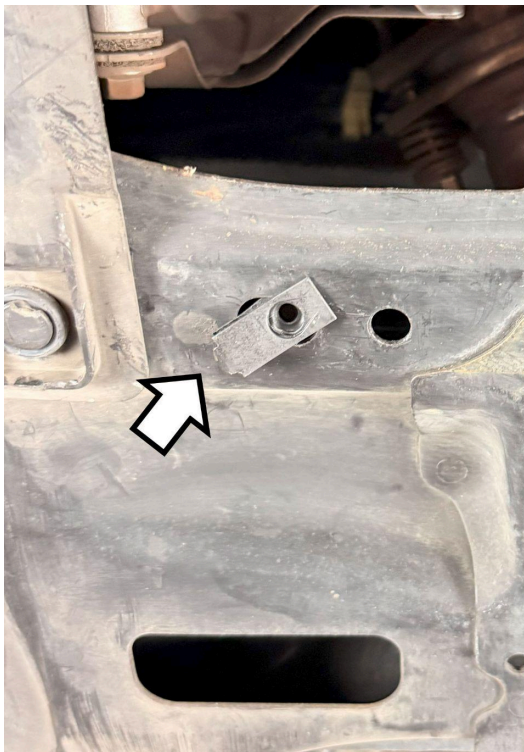
2. Install an M5 clip nut to each of the five mounting points in the orientation shown.



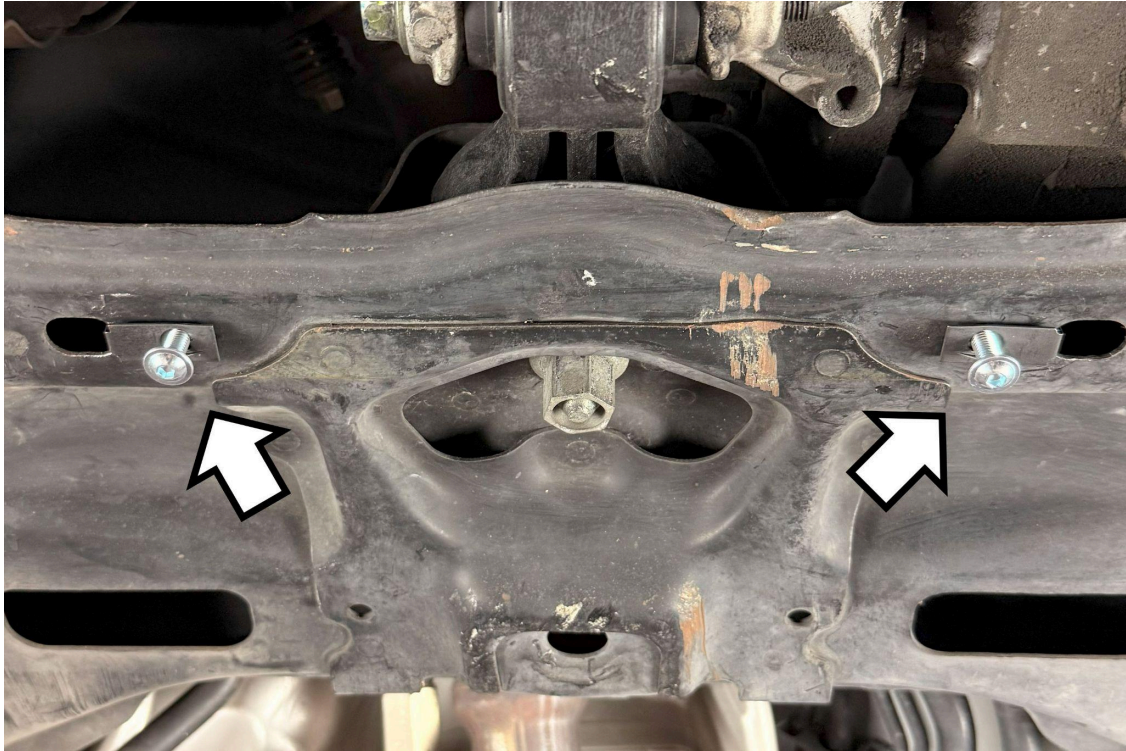
3. Ensure that the holes on the clip nuts are centered to the holes on the factory plastic panels.



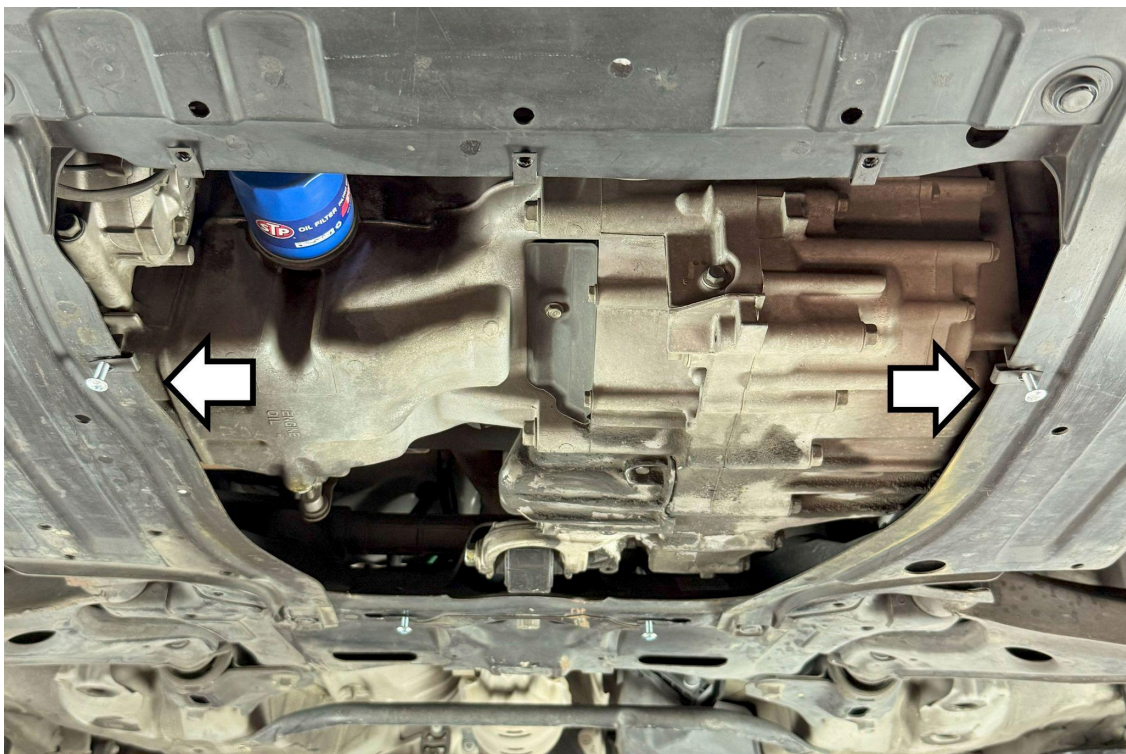
4. Locate the two slotted holes on the subframe to install the M6 clip nuts.



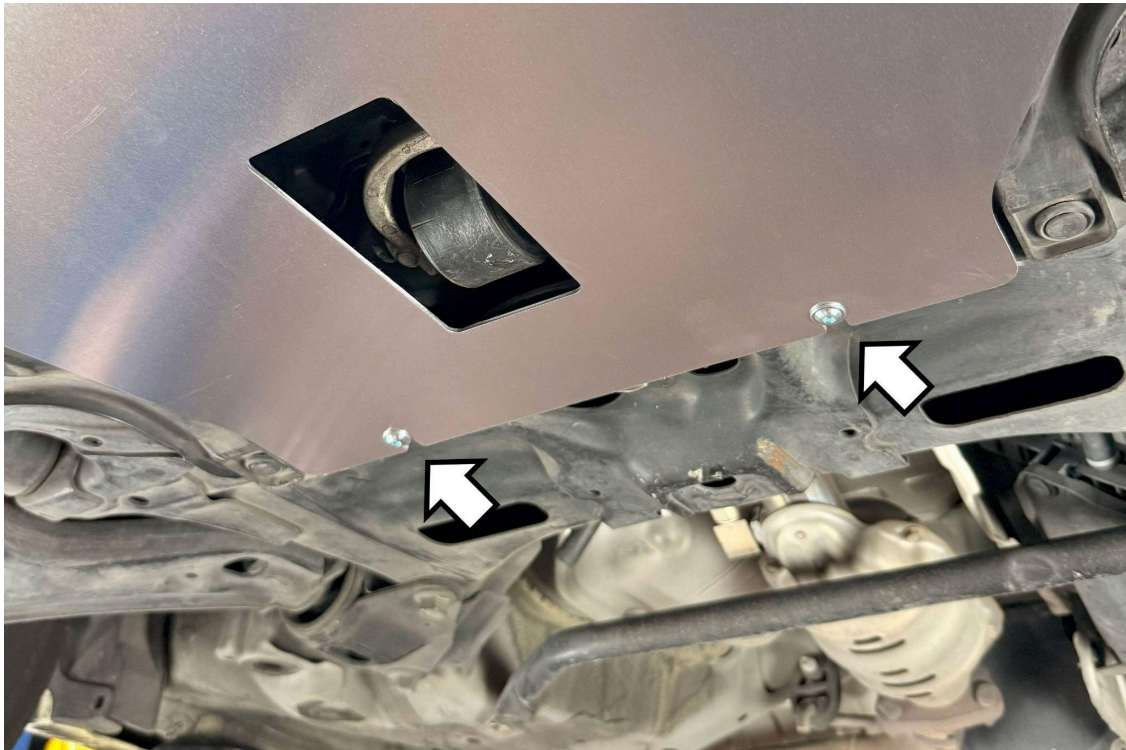
5. Slide the clip nut in through the slot and push it in towards the center of the vehicle. You may need to gently hammer the clip nut into position.



6. Once the M6 clip nuts are in place, thread on the two provided M6 bolts about half way on.



7. On the two side mounting points, thread on two provided M5 bolts about half way on.



8. Slide the undertray over the two M6 bolts to hang the rear of the undertray on. Do not fasten the bolts at this time.



9. Slide the undertray forward, then back again to allow the two side bolts to hook onto the undertray.



10. With the undertray suspended, you may now install the remaining three M5 bolts to the front mounting points.

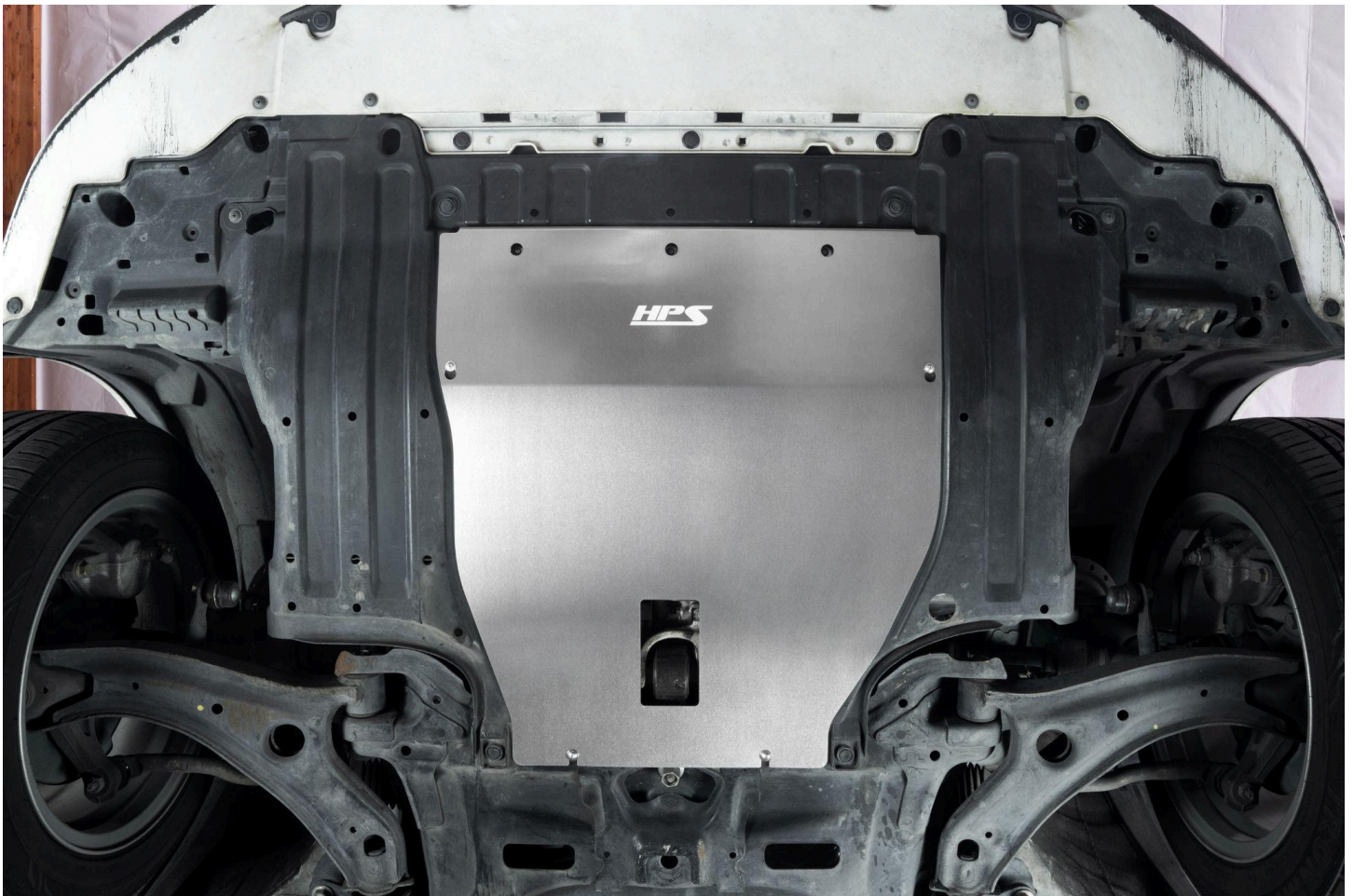
FINAL STEPS

Once the undertray has been positioned, tighten all of the clamps and secure all of the bolts.

- Torque all fasteners to **5.5 Nm (4.1 lbs-ft)**.
- Recheck the hardware after 100 miles.

Failure to follow proper maintenance procedures may cause damage to the undertray and will void the warranty.

To gain access for an oil change, fully remove the three front bolts and loosen the four rear bolts by 5-10 turns. Then slide the undertray forward to drop the plate.



Also available for Honda 2009-2013 Fit 1.5L



HPS Performance Air Intake Kit

Part Number: [827-102](#)



HPS Performance Silicone Hose Kit

Part Number: [57-1229](#)



HPS Performance Stainless Steel Magnetic

Oil Drain Plug Bolt

Part Number: [MDP-M14x150](#)

**Contact an authorized HPS Performance dealer or
visit us at hpsperformance.com for more details**