



## **Front Skid Plate Part Number: SP-101**

**Tesla 2017-2023 Model 3  
Tesla 2020-2023 Model Y**

## **Installation Instructions**

For technical inquiries please email us at [tech@hpsperformance.com](mailto:tech@hpsperformance.com)

In the email, please include the following information for faster response:

- Year / Make / Model / Engine of your vehicle.
- If it is a fitment issue, please include pictures showing the fitment problem.
- If there are missing parts, please list the part number(s) from the bill of materials on the 2nd page.
- Optional but recommended – Your contact phone number and preferred call back time.

You can also give us a call via 626-747-9200 for tech support Monday-Friday, 9:00am-5:00pm Pacific Time.

# Bill of Materials

## Kit Number: SP-101

Line	Description	Part Number	Qty
1	Skid Plate	FSP-0001	1
2	Bracket	530-617	1
3	M6 x 1mm, 18mm Stainless Steel Flanged Button Head Screw	97654A224	<b>10</b>
4	M10 x 1.5mm, 16mm Stainless Steel Flanged Button Head Screw	97654A202	<b>2</b>
5	M10 x 1.5mm Steel Coupling Nut	93355A350	<b>2</b>
6	Aluminum Unthreaded Spacer, 13 mm OD, 5 mm Long M6	94669A165	<b>2</b>
7	Stainless Steel Washer for M6 Screw, 18 mm OD	91116A150	<b>10</b>

- Before installing any parts of this skid plate, please read the instructions thoroughly.
- Verify the contents of this kit before disassembling your vehicle.
- Report any defective or missing parts to HPS directly. The HPS dealer you purchased this product from might not have the replacement parts you need.
- Installation requires moderate mechanical skills. A qualified mechanic is highly recommended.
- For technical inquiries, please e-mail us at [tech@hpsperformance.com](mailto:tech@hpsperformance.com)

### Tools Required

- 10mm Socket
- 15mm Socket
- 17mm Socket or wrench
- 6mm Hex Key or socket
- 4mm Hex Key or socket
- Ratchet
- Torque Wrench
- Blue threadlocker (Optional)\*

### Torque Specs

M6 8 ft-lb.  
M10 35 ft-lb.

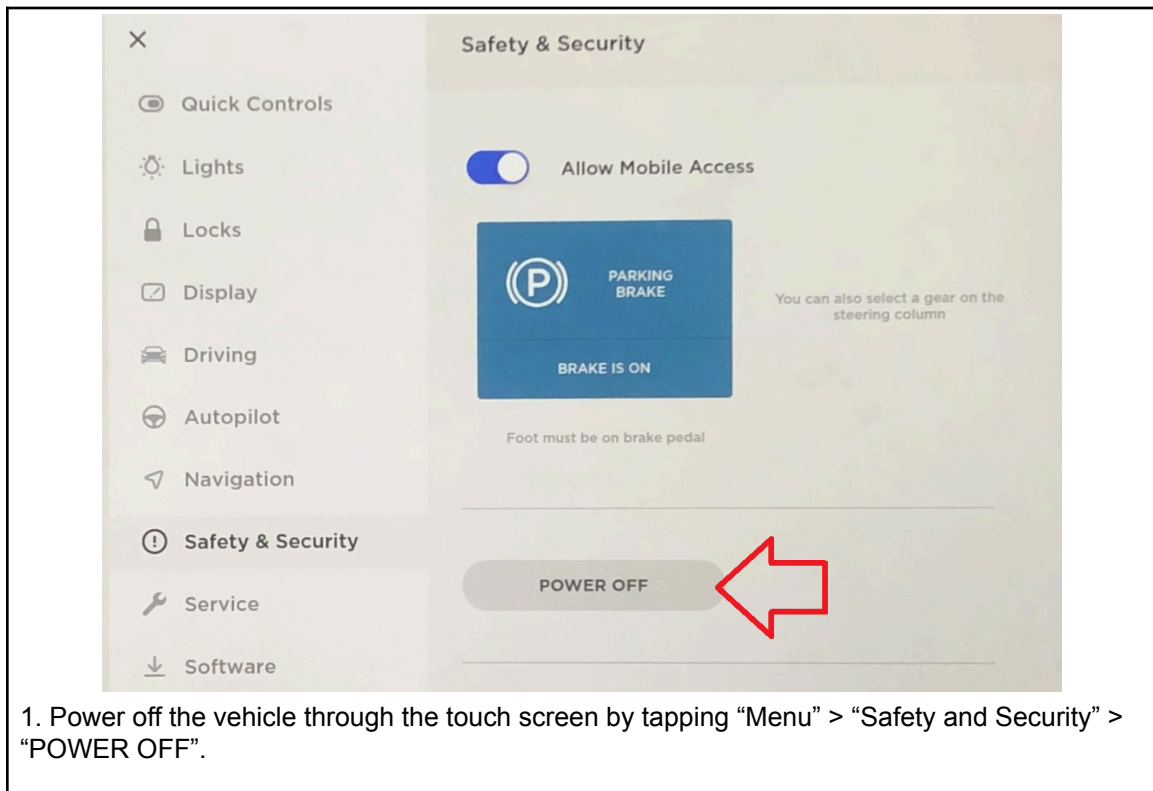
***\*HPS recommends applying threadlocker to all fasteners on this installation. If you choose to forego this step, it is recommended that you check all fasteners periodically.***

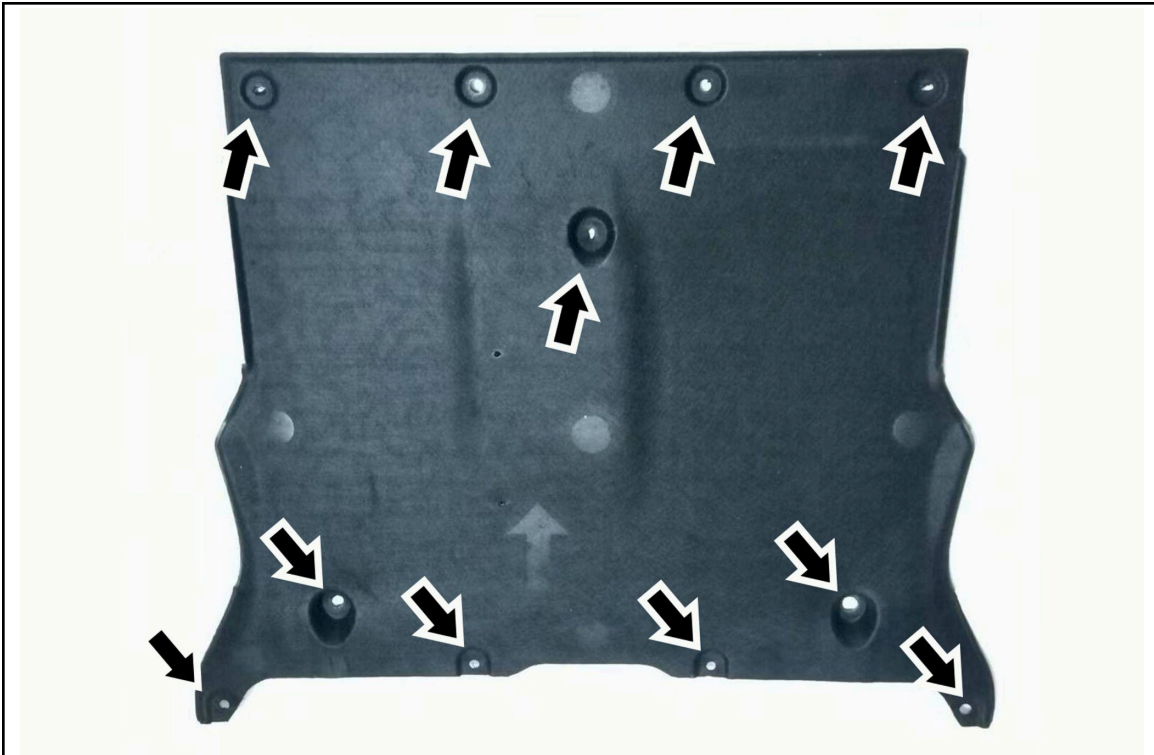
## **PLEASE READ CAREFULLY BEFORE INSTALLATION!**

This installation is not for the novice customer. Install this product with EXTREME caution! Improperly installation will damage or destroy coolant line and orange high voltage cable! DO NOT in any cases touch any orange cables during installation. If you are not mechanically inclined, please have a professional automotive mechanic install this product.

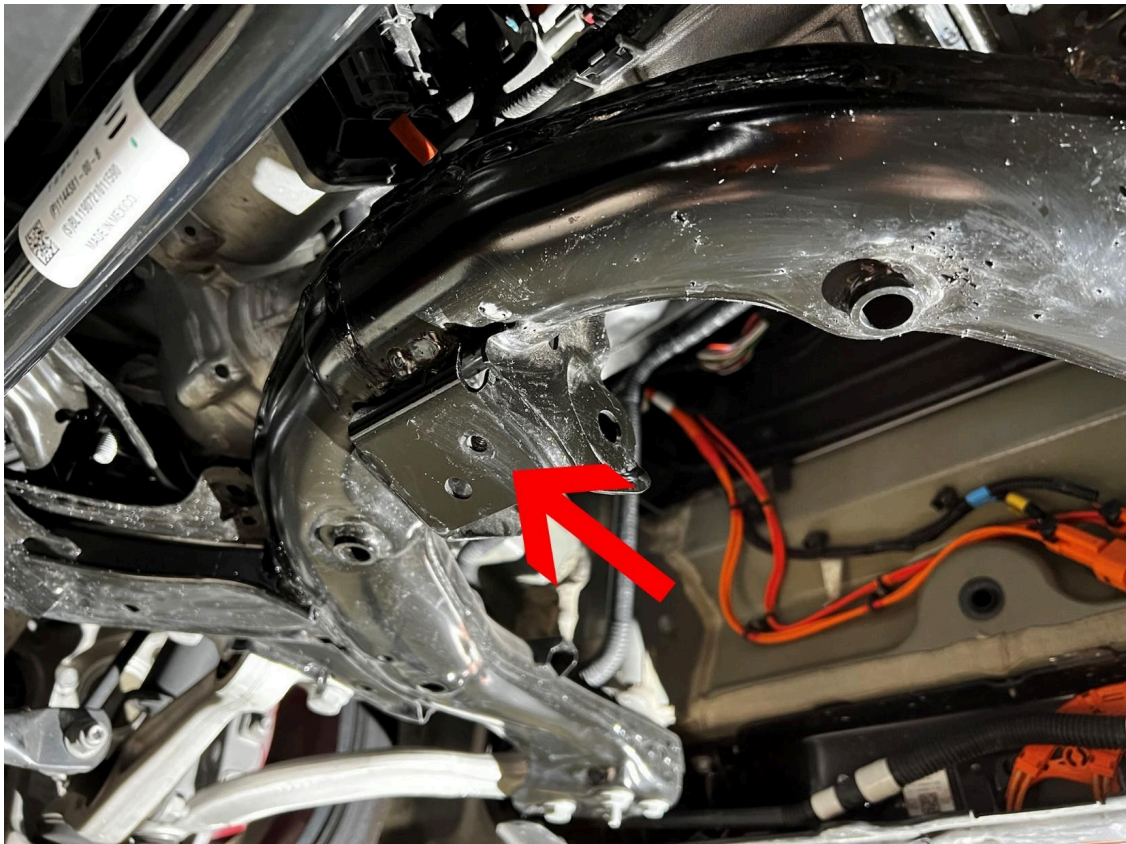
**NOTE:** *HPS holds no responsibility for any damage or any injury that results from misuse of this product. Use extreme caution and take all necessary precautions to prevent electrocution.*

## **GETTING STARTED**





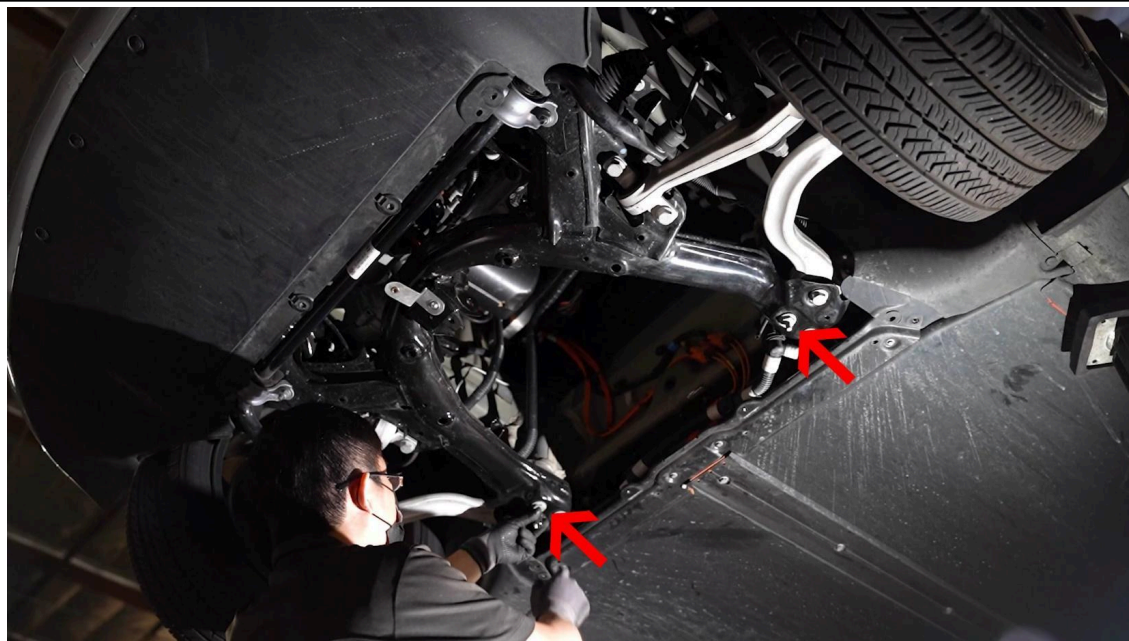
3. Lift the vehicle to access the front undertray. Use a 10mm and 15mm socket to remove the stock undertray.



4. Install the provided bracket onto the mounting point located in the center of the subframe.



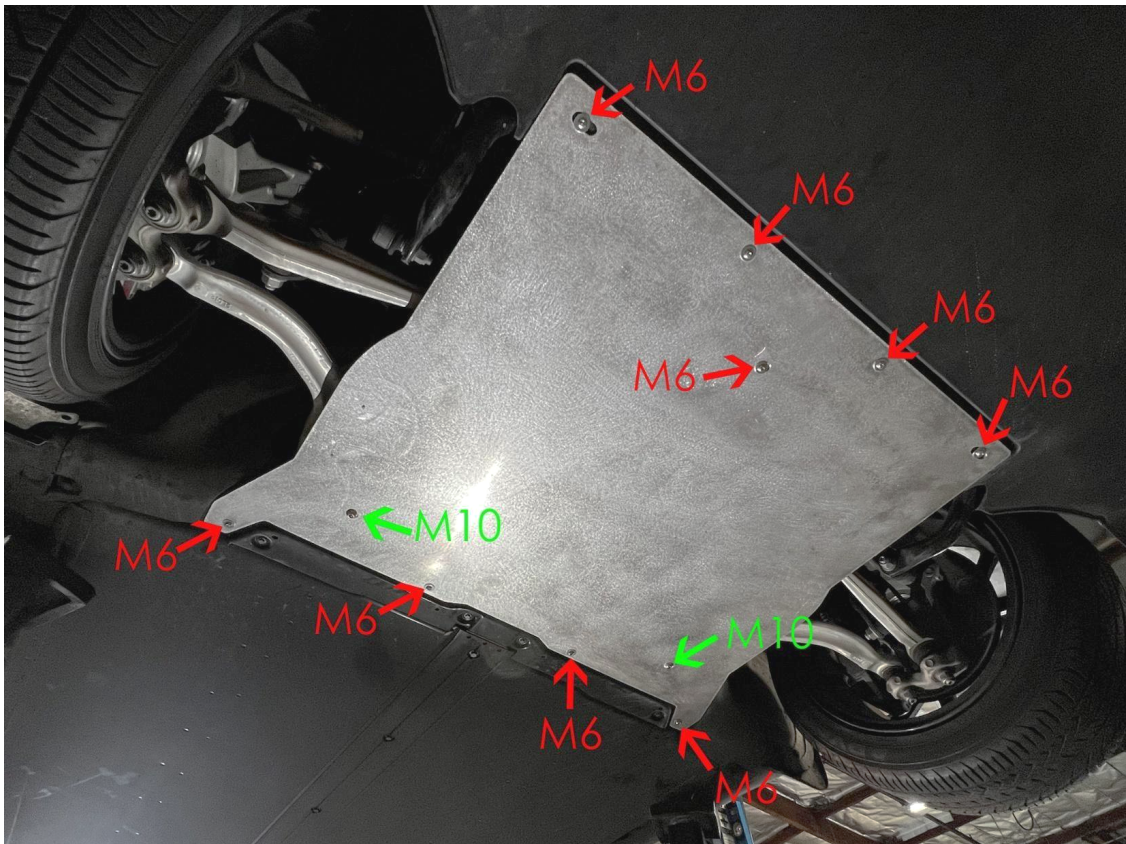
5. Position the bracket as shown with the threaded side facing the front of the vehicle. Secure the bracket to the subframe using one of the included M6 screws and stainless steel washer.



6. Install the M10 coupling nuts onto the large studs at the rear of the subframe. Use a 17mm socket and torque wrench to tighten to 35 ft-lb.



7. Add the two provided spacers on the rear corner mounting points between the vehicle and the skid plate.



8. Install the provided bolts in their designated locations as shown above. For the M6 screws, install a stainless steel washer between the screw and skid plate.

**Torque Specs:** M6 = 8 ft-lb., M10 = 35 ft-lb.

## **FINAL STEPS**

Once the skid plate is in place, make sure all the fasteners are fastened to the proper torque specifications.

Check for clearance around the skid plate and ensure that no cables or lines are pinched.

Remove all tools from the vehicle before driving.