



## **Performance Oil Catch Can Kit**

**Part Number: 860-023**

**2016-2022 Polaris RZR XP Turbo / Turbo S**

## **Installation Instructions**

For technical inquiries please email us at [tech@hpsperformance.com](mailto:tech@hpsperformance.com)

In the email, please include the following information for faster response:

- Year / Make / Model / Engine of your vehicle
- If it is a fitment issue, please include pictures showing the fitment problem
- If there are missing parts, please list the part number(s) from the bill of materials on the 2nd page
- Optional but recommended – Your contact phone number and preferred call back time

You can also give us a call via 626-747-9200 for tech support Monday-Friday, 9:00am-4:30pm Pacific Time.

# Bill of Materials

## Kit Number: 860-023

Line #	Description	Part Number	Qty
1	Oil Catch Can	OCC-14	1
2	Oil Catch Can Bracket	OCC-BRKT-035	1
3	Straight Aluminum Adapter, AN-10 to 16mm x 1.50	AN816-10-M1615	2
4	Push-On Aluminum Hose End, AN-10 45 degree	150-4510	2
6	Barb Fitting, 5/8" to 1"	HW-BF-062-100	1
7	Aluminum Hose Union, 5/8" to 3/4"	AHUR-062-075-BLK	1
8	Bolt, Button Head, M5 x 0.8, 10mm Long	HW-B5-10	3
9	EPDM Hose, 1" ID	EPDM-100	7.5 inches
10	Push-On Hose, AN-10	150-10	6 inches
11	Push-On Hose, AN-10	150-10	23 inches
12	Push-On Hose, AN-12	150-12	4.5 inches
13	Embossed Hose Clamp, 20mm - 32mm	EMSC-20-32	2
14	Embossed Hose Clamp, 16mm - 27mm	EMSC-16-27	4
15	Bolt, M6 x 1.0, 20mm Long	HW-B6-20	2
16	Flange Nut, M6	HW-N6	2
17	Flat Washer, M6, 16mm OD	HW-FW6L	4

- Before installing any parts of this oil catch can kit, please read the instructions thoroughly.
- Verify the contents of this oil catch can kit before disassembling your vehicle.
- **DO NOT INSTALL IF ANY PARTS ARE MISSING OR DAMAGED. CONTACT [tech@hpsperformance.com](mailto:tech@hpsperformance.com) IMMEDIATELY. WE ARE NOT RESPONSIBLE FOR ANY DAMAGE CAUSED DUE TO IMPROPER INSTALLATION.**
- Installation requires moderate mechanical skills. A qualified mechanic is highly recommended.
- Do not attempt to install the catch can while the engine is hot.
- This installation may require removal of coolant lines that may be hot.
- For technical inquiries, please email us at [tech@hpsperformance.com](mailto:tech@hpsperformance.com)

## **PLEASE READ CAREFULLY BEFORE INSTALLATION!**

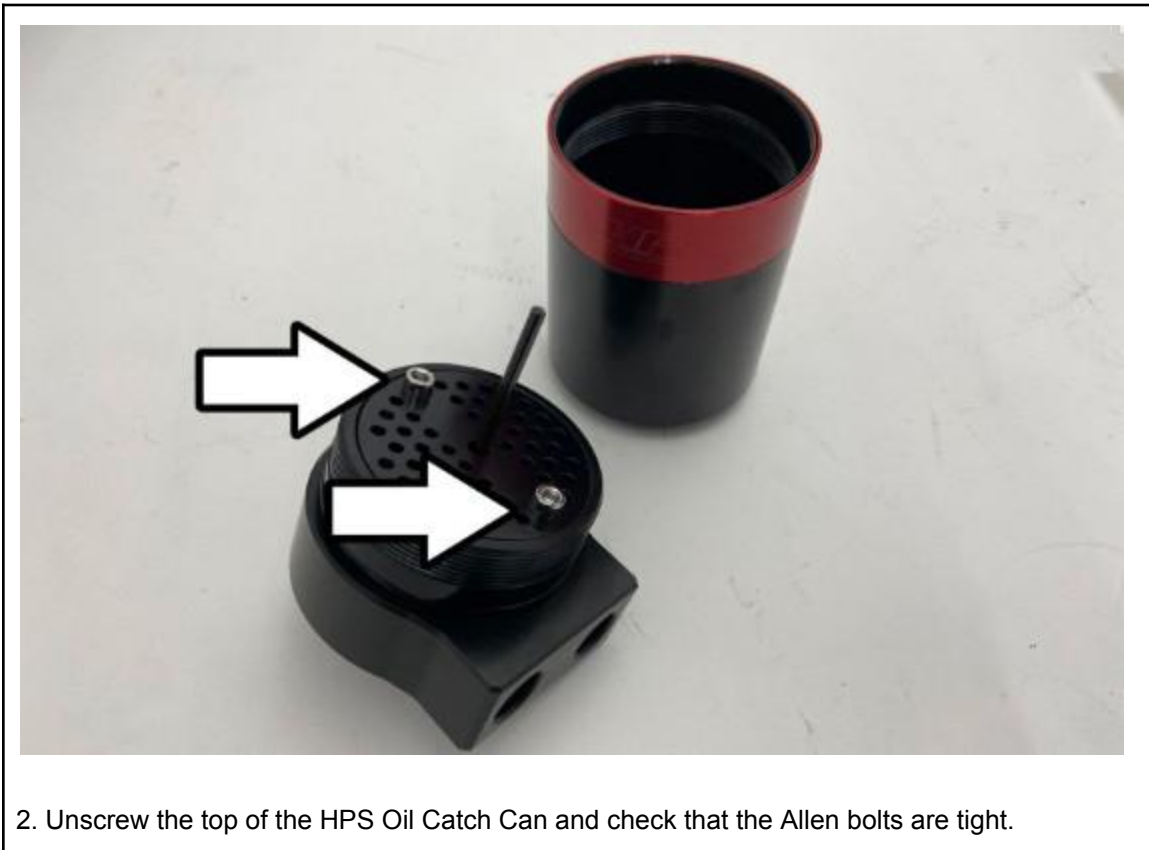
This installation is not for the novice customer. Install this product with EXTREME caution! Misuse of this product can destroy your engine! If you are not mechanically inclined, please have a professional automotive mechanic install this kit.

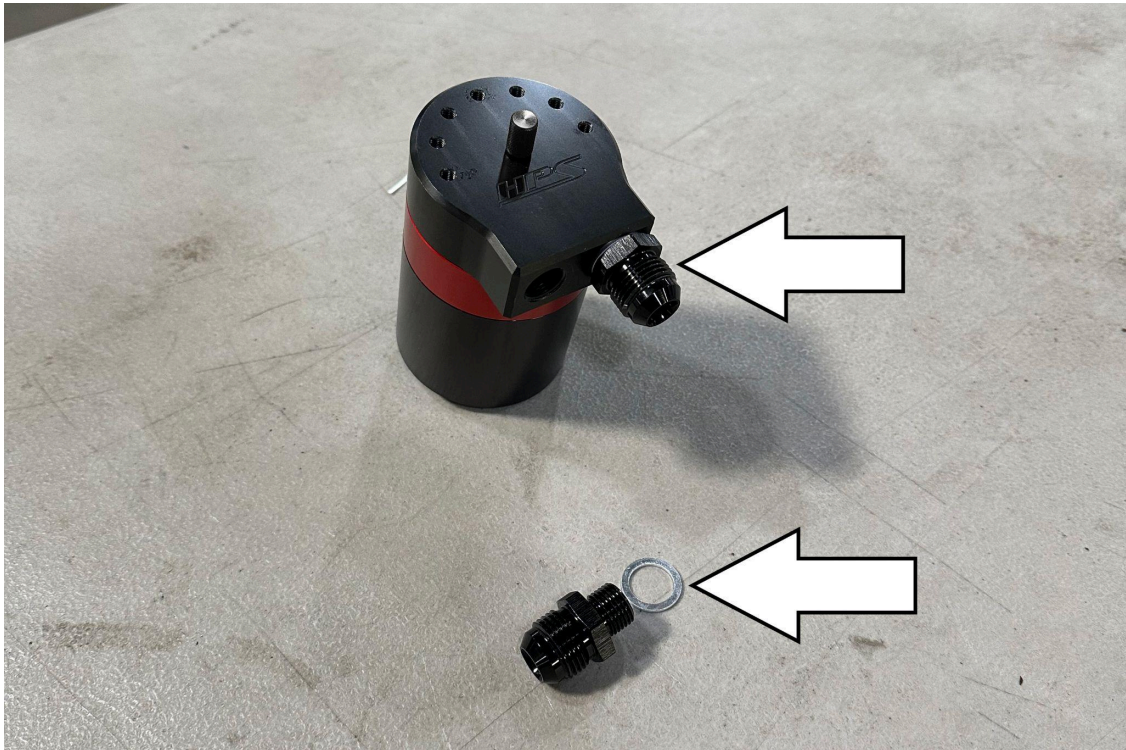
**NOTE: HPS holds no responsibility for any engine damage that results from misuse of this product.**

## **GETTING STARTED**

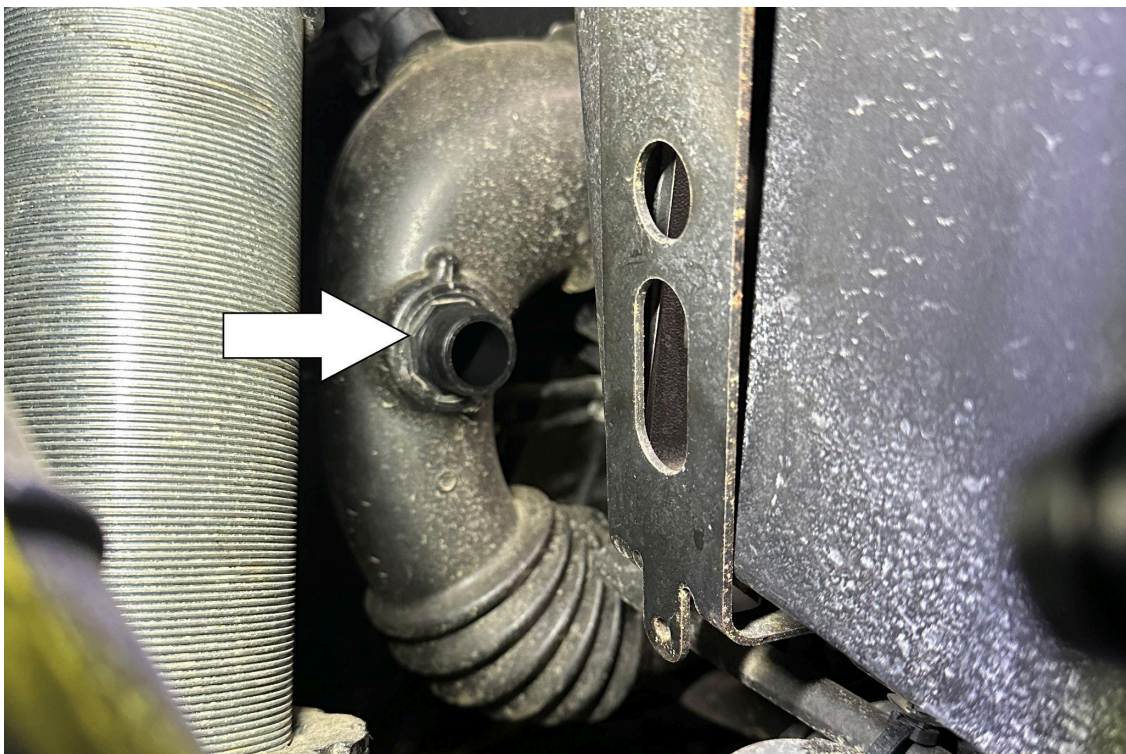
1. Turn the ignition OFF and disconnect the vehicle's negative battery cable. If the engine has run within the past two hours let it cool down.

NOTE: Disconnecting the negative battery cable erases pre-programmed electronic memories. Write down all memory settings before disconnecting the negative battery cable. Some radios will require an anti-theft code to be entered after the battery is reconnected. The anti-theft code is typically supplied with your owner's manual. In the event your vehicle's anti-theft code cannot be recovered, contact an authorized dealership to obtain your vehicle's anti-theft code. We also highly recommend NOT discarding any stock parts after the installation.





3. Install the two AN-10 to M16 x 1.5 adapters and crush washers onto the oil catch.



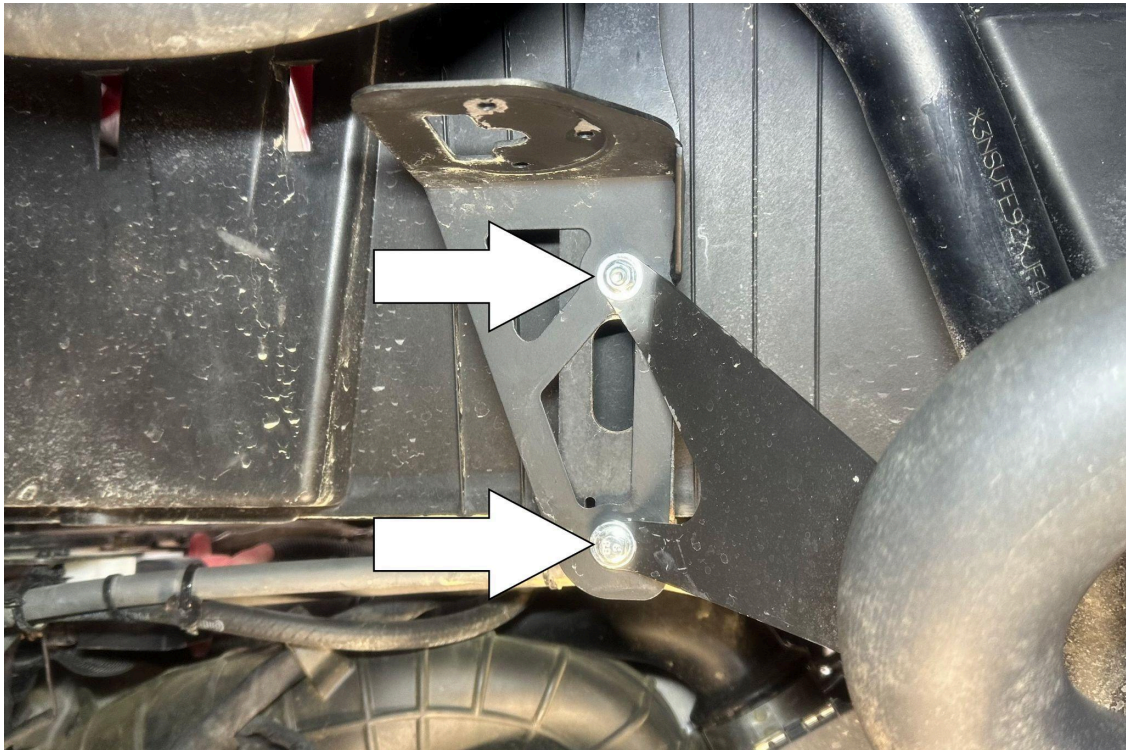
4. Disconnect the crankcase vent hose located on the intake pipe.



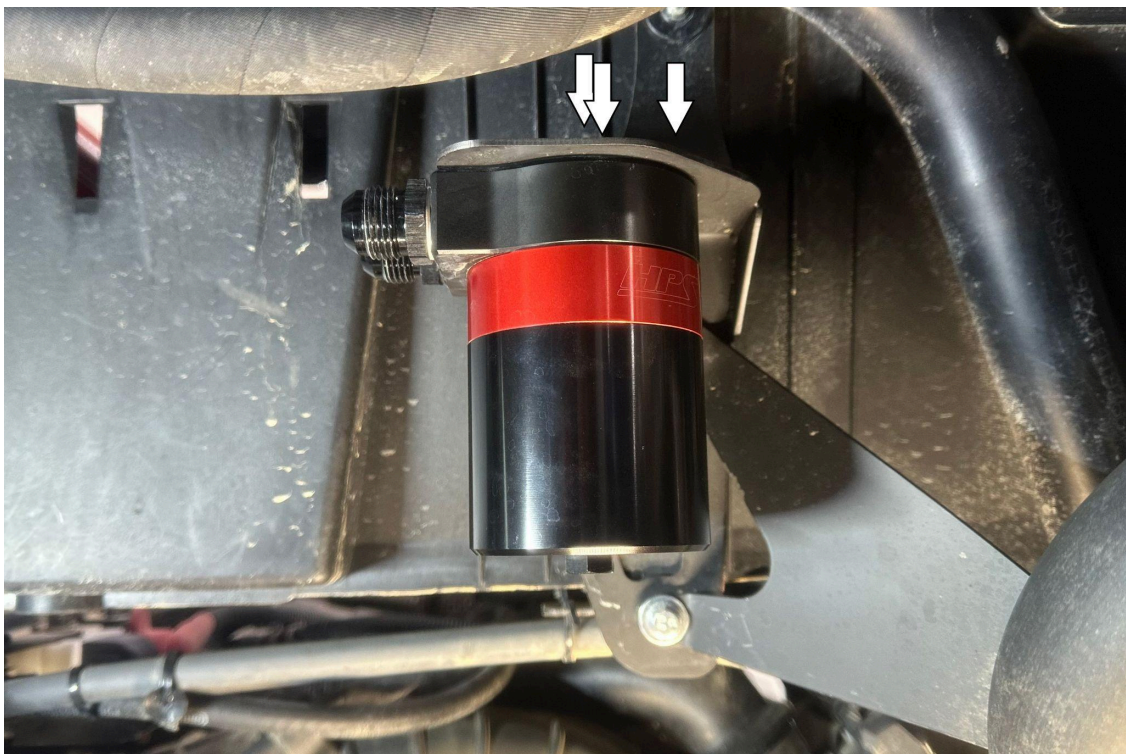
5. Disconnect the opposite side of the crankcase vent hose from the engine.



6. Remove the crankcase vent hose from the vehicle.



7. Use the provided M6 bolts, flange nuts, and washers to install the oil catch can bracket.



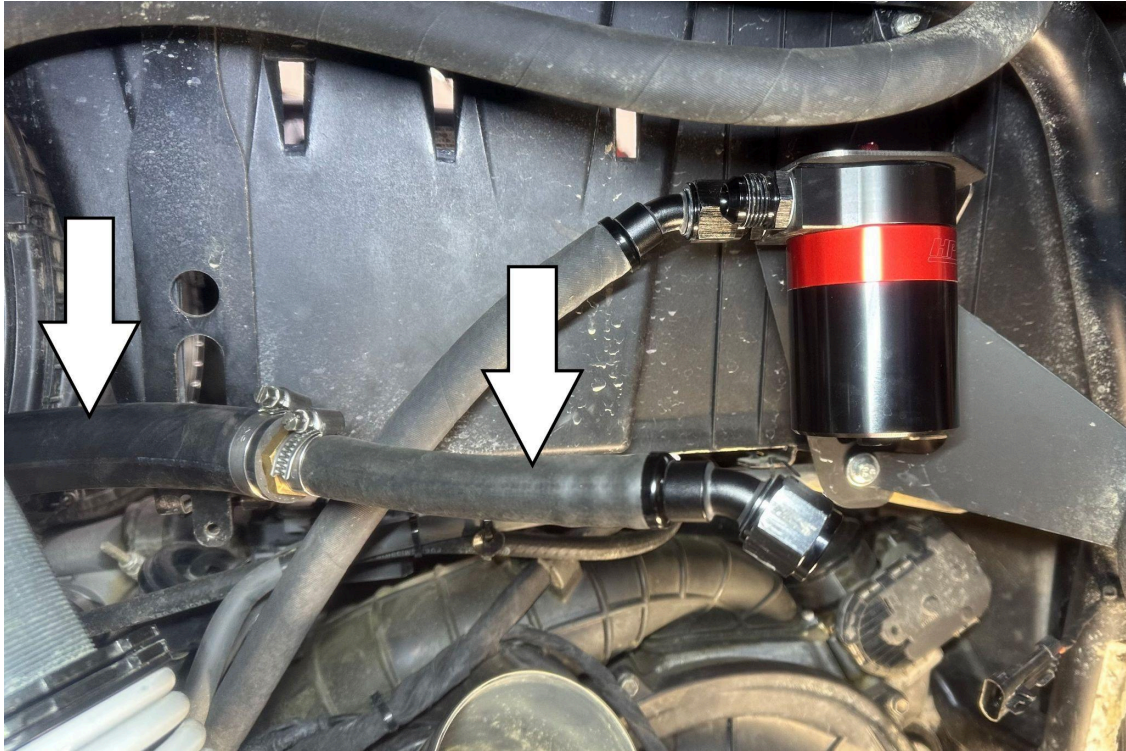
8. Mount the HPS oil catch can to the oil catch can bracket using the three provided M5 bolts



9. Push one AN-10 45 degree fitting onto the 23" long AN-10 hose. Then connect the opposite end of the 23" long hose to the 4.5" long AN-12 hose using the provided 5/8" to 3/4" aluminum hose union. Fasten two EMSC-16-27 clamps to secure the hoses to the hose union. Place another EMSC-16-27 clamp onto the opposite end of the AN-12 hose, then connect and fasten it to the port on the engine.



10. Connect and fasten the AN hose end to the oil catch can.



11. Push the second 45 degree fitting onto the 6" AN-10 hose. Connect the provided 7.5" long, 1" ID EPDM hose and 6" long AN-10 hose using the provided 5/8" to 1" barbed fitting. Fasten one EMSC-16-27 and one EMSC-20-32 clamp to secure the hoses to the barbed fitting. Place another EMSC-20-32 clamp onto the opposite end of the 1" EPDM hose, then connect and fasten it to the port on the intake tube. Connect and fasten the AN hose end to the oil catch can.

## **FINAL STEPS**

Upon completion of the installation, reconnect the negative battery terminal before you start the engine. Double check to make sure everything is tight and properly positioned before starting the vehicle.

Start the engine. Let the car idle for 3 minutes. Perform a final inspection before driving. Listen carefully for any odd noises or rattles prior to taking it for a test drive. If any problems arise, go back and check the hoses and clamps that may be causing the issue and correct the problem.

Ensure that the dipstick on the HPS oil catch can is fully seated. Failure to install the dipstick properly will result in a check engine light and poor performance.



**Also available for:**  
**Polaris RZR XP Turbo/Turbo S 2016-2022**



**HPS Stainless Steel Magnetic Oil Drain Plug Kit  
(Front Differential, Rear Transmission, Oil Pan)**

**Part Number [MDPK-100](#)**



**HPS Stainless Steel Magnetic Oil Drain Plug Kit  
(Front Differential)**

**Part Number [MPDK-101](#)**



**HPS Stainless Steel Magnetic Oil Drain Plug Kit  
(Rear Transmission)**

**Part Number [MDPK-102](#)**



**HPS Stainless Steel Magnetic Oil Drain Plug Kit  
(Oil Pan)**

**Part Number [MDPK-103](#)**

**Contact an authorized HPS Performance dealer or  
visit us at [hpsperformance.com](http://hpsperformance.com) for more details**