



## **Performance Oil Catch Can Kit**

**Part Number: 860-004**

**Subaru 2008-2014 Impreza WRX 2.5L Turbo  
Subaru 2009-2010 Impreza 2.5GT 2.5L Turbo**

## **Installation Instructions**

For technical inquiries please email us at [tech@hpsperformance.com](mailto:tech@hpsperformance.com)

In the email, please include the following information for faster response:

- Year / Make / Model / Engine of your vehicle
- If it is a fitment issue, please include pictures showing the fitment problem
- If there are missing parts, please list the part number(s) from the bill of materials on the 2nd page
- Optional but recommended – Your contact phone number and preferred call back time

You can also give us a call via 626-747-9200 for tech support Monday-Friday, 9:00am-5:00pm Pacific Time.

# Bill of Materials

## Kit Number: 860-004

Line #	Description	Part Number	Qty
1	Oil Catch Can	OCC-14	1
2	Oil Catch Can Bracket	OCC-BRKT-004	1
3	M5 x 0.8 x 10 bolt	HW-B5-10	3
4	Straight Aluminum Adapter, AN-10 to 16mm x 1.50	AN816-10-M1615	1
5	Straight Aluminum Adapter, AN-8 to 16mm x 1.50	AN816-8-M1615	1
6	Push-On Aluminum Hose End, AN-8	150-0008	1
7	Push-On Aluminum Hose End, AN-10	150-0010	1
8	Aluminum Reducer Union, 5/8" to 3/4"	AHUR-062-075-BLK	1
9	Bolt, M8 x 1.25, 16mm Long	HW-B8-16	1
10	M8 Flat Washer 24mm OD	HW-FW8L	1
11	Bolt, M6 x 1.0, 16mm Long	HW-B6-16	1
12	M6 Flat Washer 16mm OD	HW-FW6L	1
13	Push On Hose, AN-10	150-10	20 inches
14	Push On Hose, AN-12	150-12	13 inches
15	Push On Hose, AN-8	150-08	21 inches
16	Push On Hose, AN-8	150-08	4 inches
17	Push On Hose, AN-8	150-08	7 inches
18	Embossed Hose Clamp, 12mm - 22mm	EMSC-12-22	6
19	Embossed Hose Clamp, 16mm - 27mm	EMSC-16-27	2
20	Plastic Barbed Y Connector, for 1/2" Tube ID	5463K727	1

- Before installing any parts of this oil catch can kit, please read the instructions thoroughly.
- Verify the contents of this oil catch can kit before disassembling your vehicle.
- DO NOT INSTALL IF ANY PARTS ARE MISSING OR DAMAGED. CONTACT [tech@hpsperformance.com](mailto:tech@hpsperformance.com) IMMEDIATELY. WE ARE NOT RESPONSIBLE FOR ANY DAMAGE CAUSED DUE TO IMPROPER INSTALLATION.
- Installation requires moderate mechanical skills. A qualified mechanic is highly recommended.
- Do not attempt to install the catch can while the engine is hot.
- This installation may require removal of coolant lines that may be hot.
- For technical inquiries, please email us at [tech@hpsperformance.com](mailto:tech@hpsperformance.com)

## **PLEASE READ CAREFULLY BEFORE INSTALLATION!**

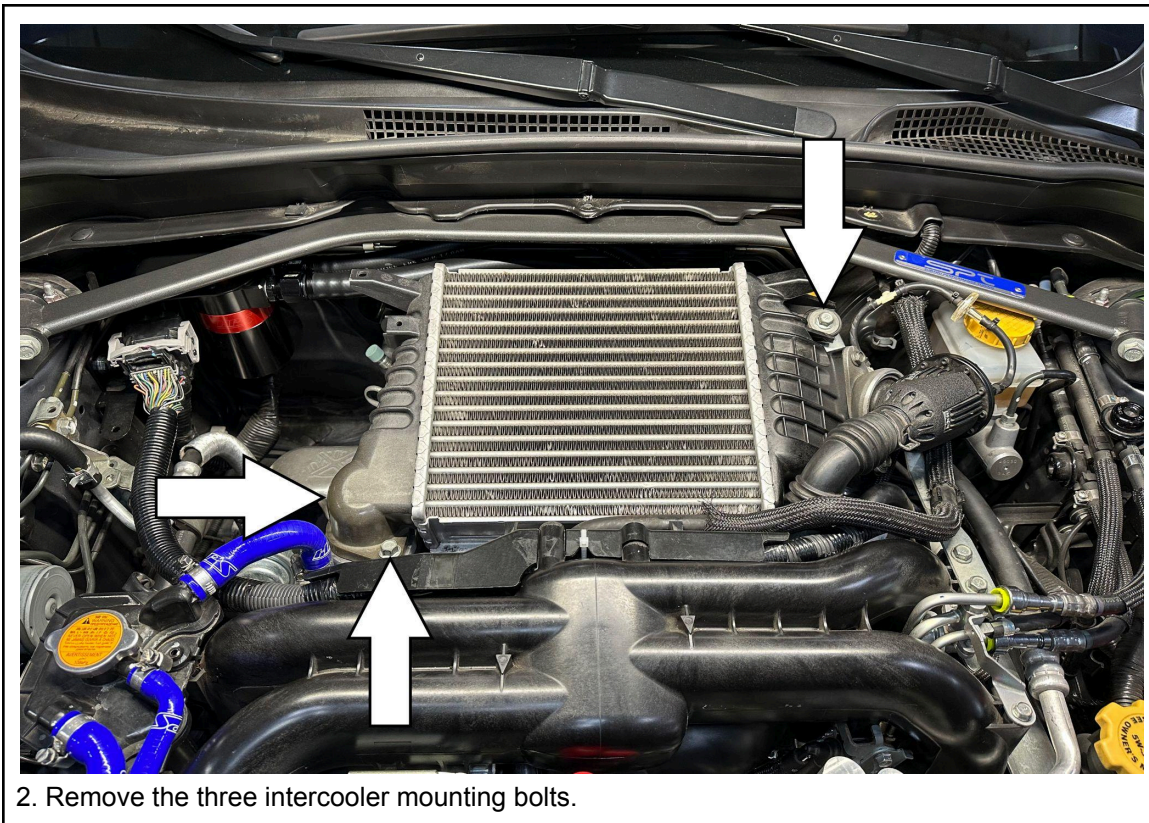
This installation is not for the novice customer. Install this product with EXTREME caution! Misuse of this product can destroy your engine! If you are not mechanically inclined, please have a professional automotive mechanic install this kit.

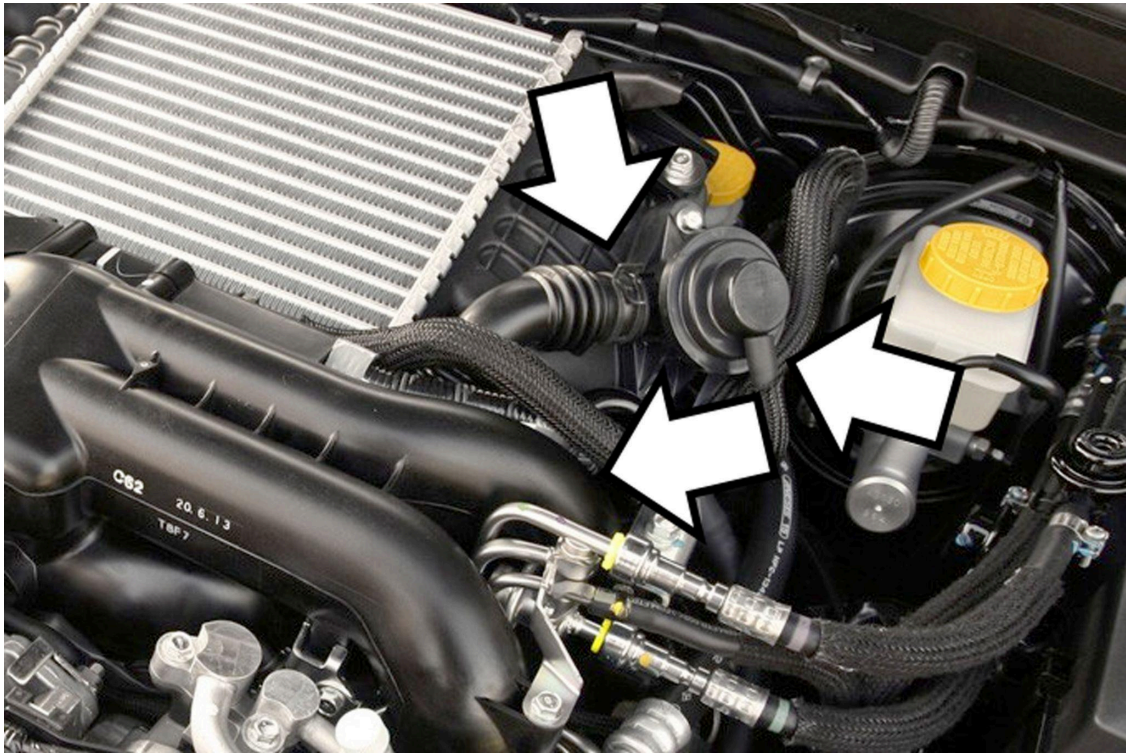
**NOTE: HPS holds no responsibility for any engine damage that results from misuse of this product.**

## **GETTING STARTED**

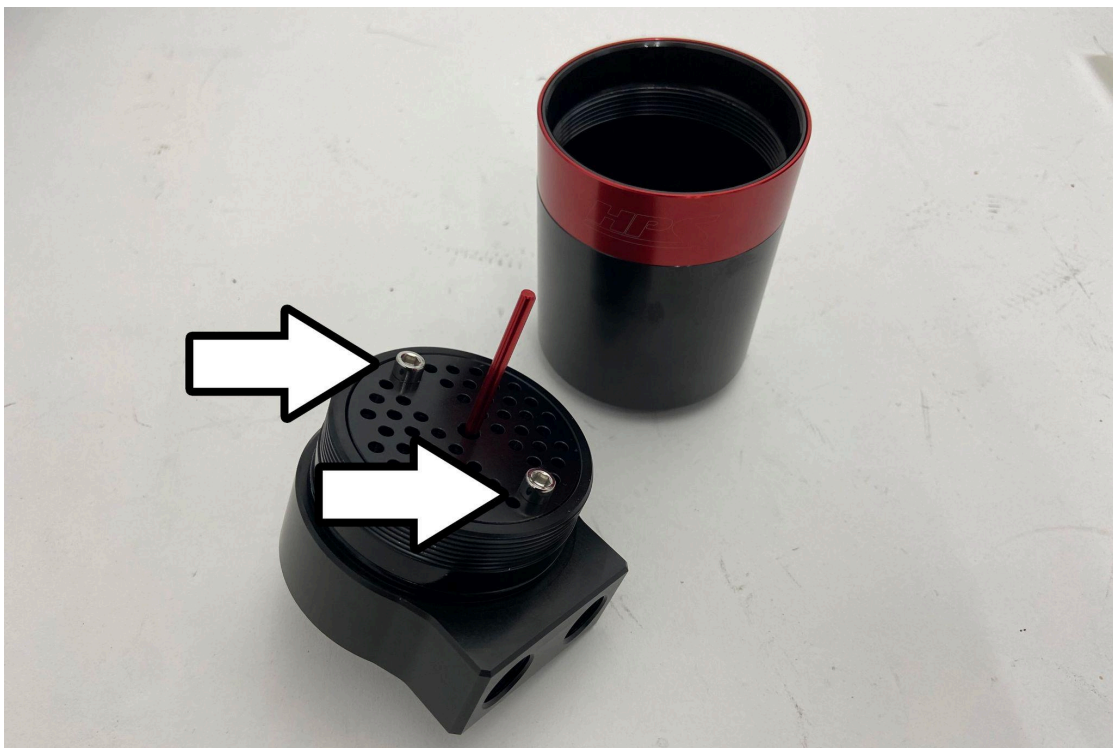
1. Turn the ignition OFF and disconnect the vehicle's negative battery cable. If the engine has run within the past two hours let it cool down.

NOTE: Disconnecting the negative battery cable erases pre-programmed electronic memories. Write down all memory settings before disconnecting the negative battery cable. Some radios will require an anti-theft code to be entered after the battery is reconnected. The anti-theft code is typically supplied with your owner's manual. In the event your vehicle's anti-theft code cannot be recovered, contact an authorized dealership to obtain your vehicle's anti-theft code. We also highly recommend NOT discarding any stock parts after the installation.

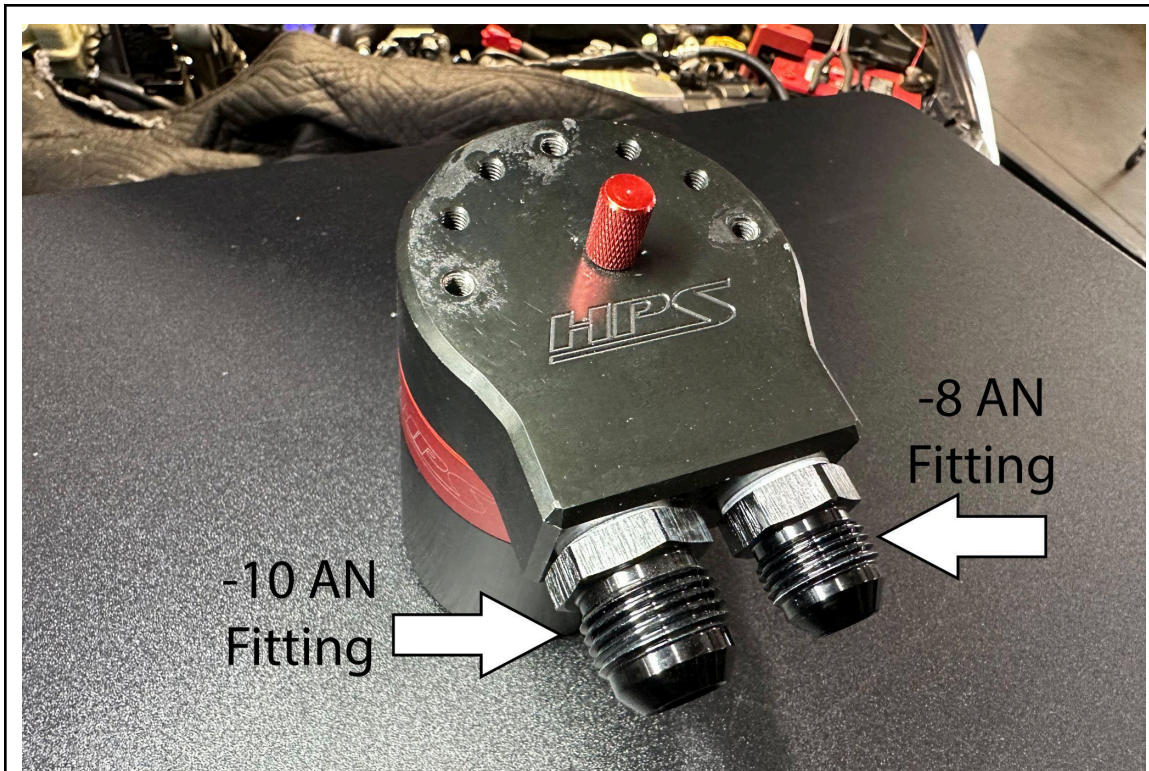




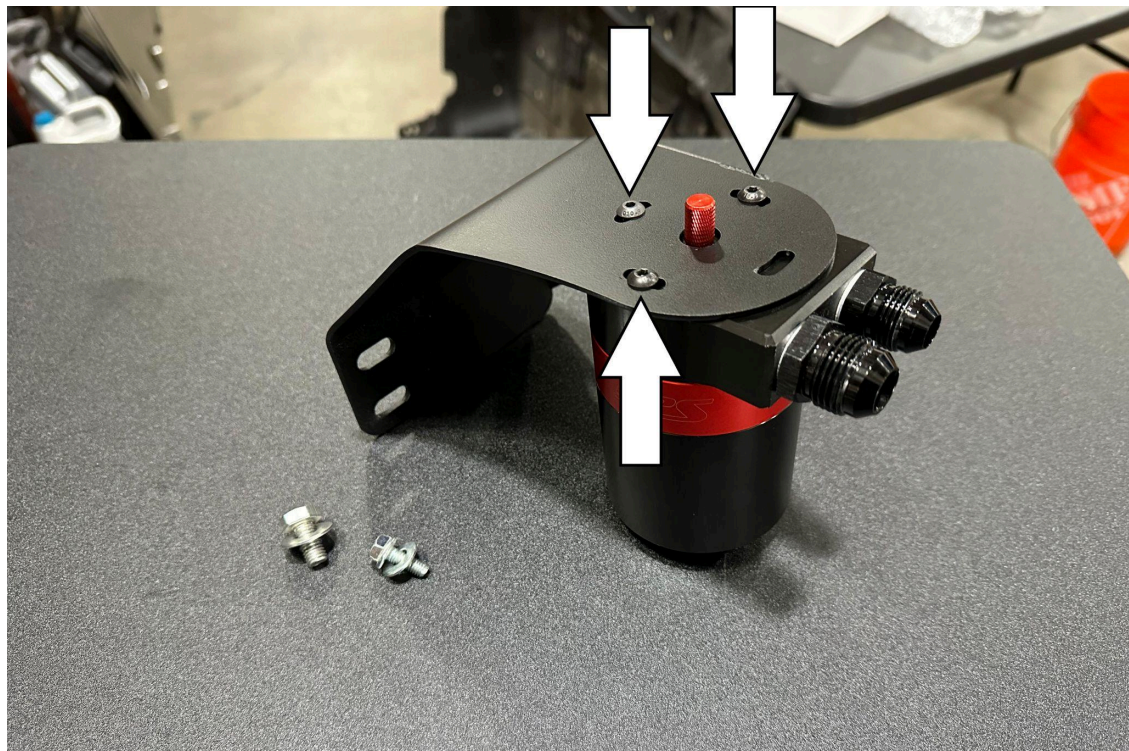
3. Remove the blow off valve recirculation hose. Disconnect the vacuum hose from the blow off valve. Next, locate the throttle body coupler directly underneath the recirculation hose. Loosen the clamp on the throttle body coupler from the intercooler. Carefully remove the intercooler from the car.



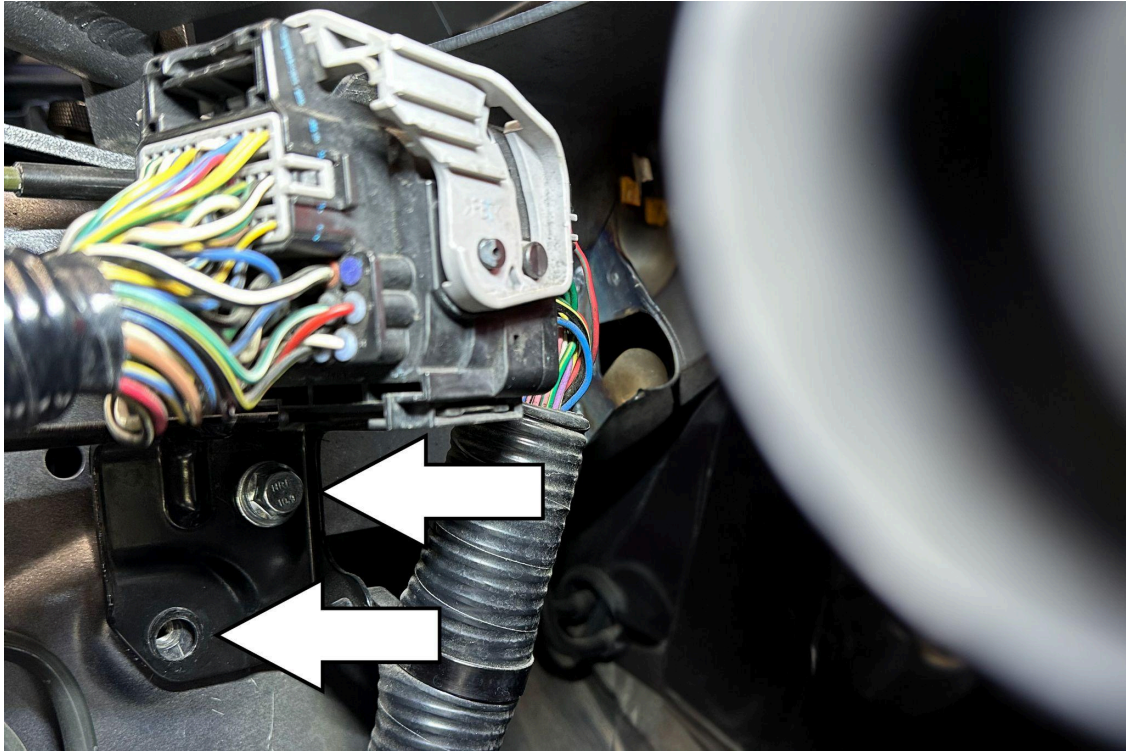
4. Unscrew the top of the HPS oil catch can and check that the Allen bolts are tight.



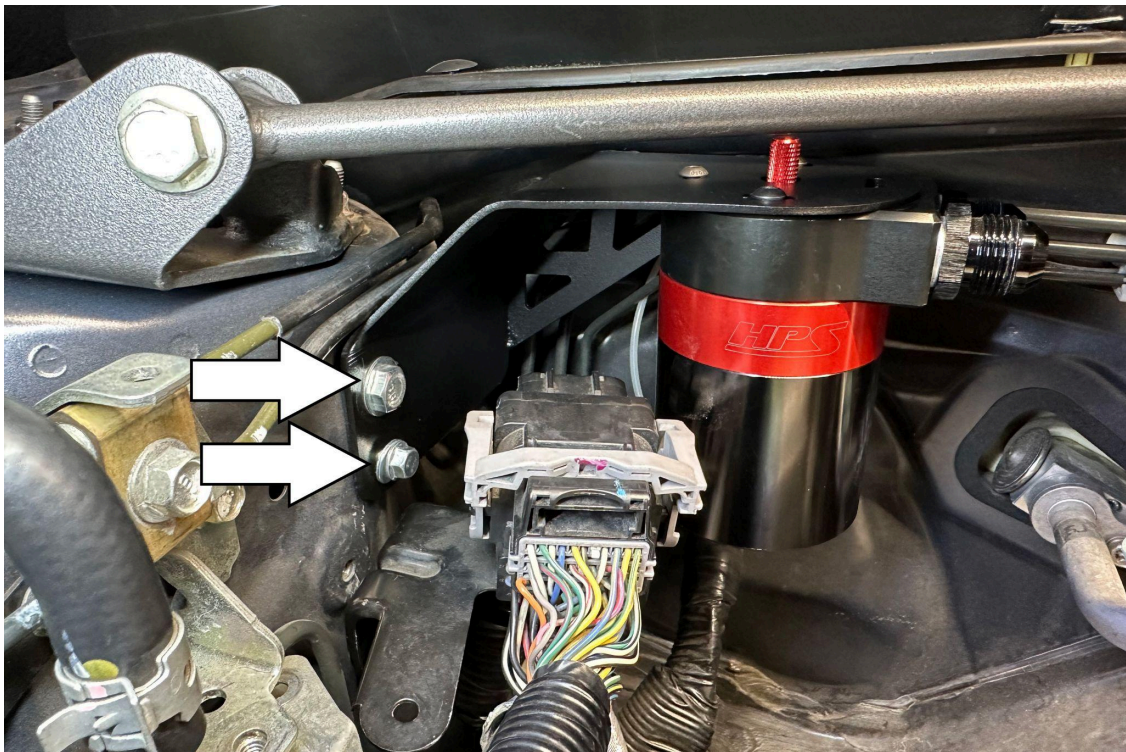
5. Install the AN-10 and AN-8 adapter fittings as shown in the picture above. Be sure to place the provided crush washers between the adapter fitting and HPS oil catch can.



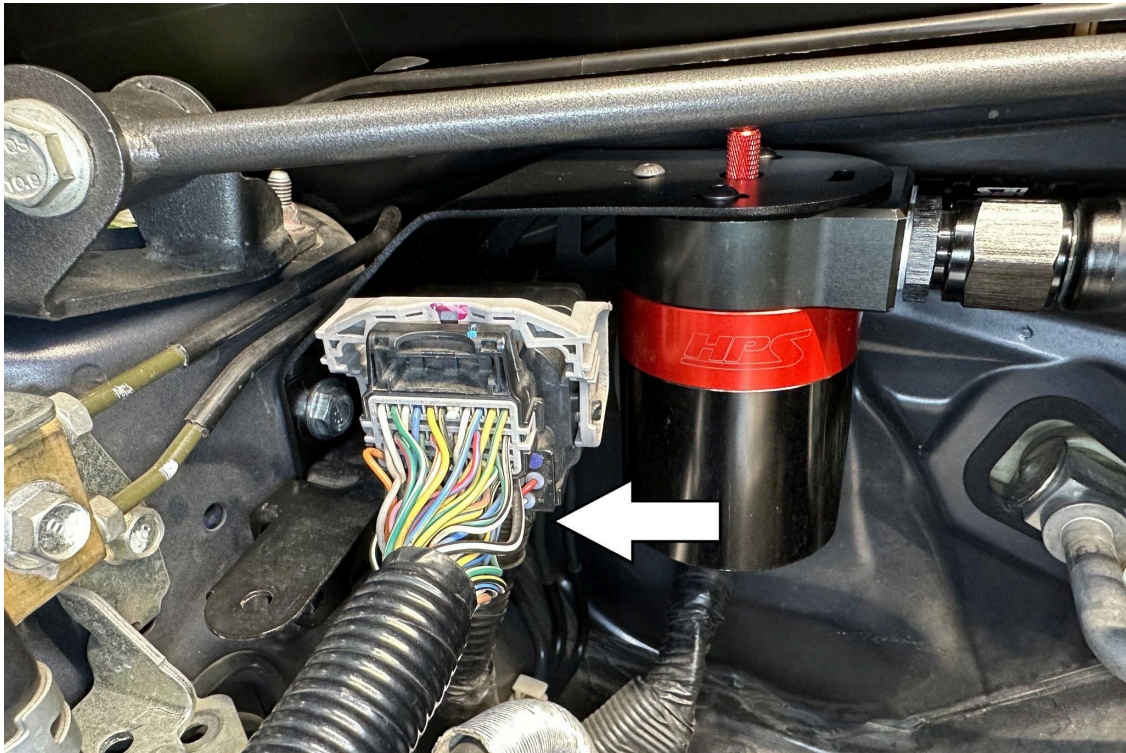
6. Mount the oil catch can to the provided bracket using the three provided M5 bolts.



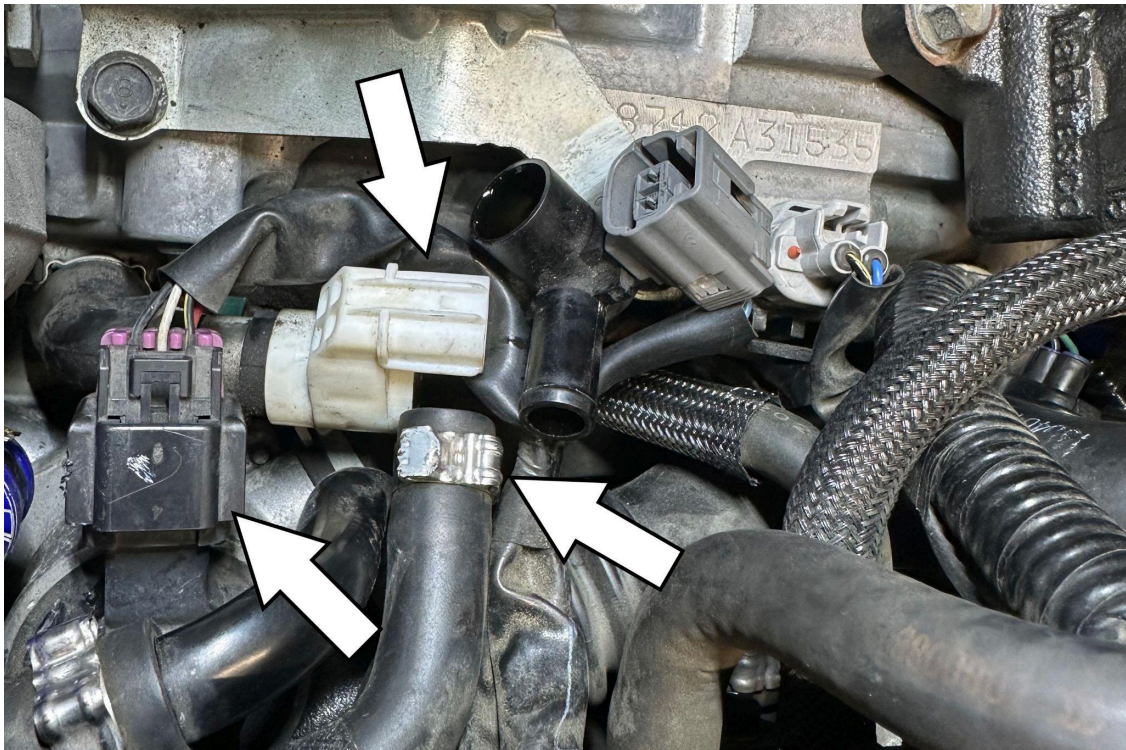
7. Remove the two harness mounting bolts located on the passenger side strut tower bar.



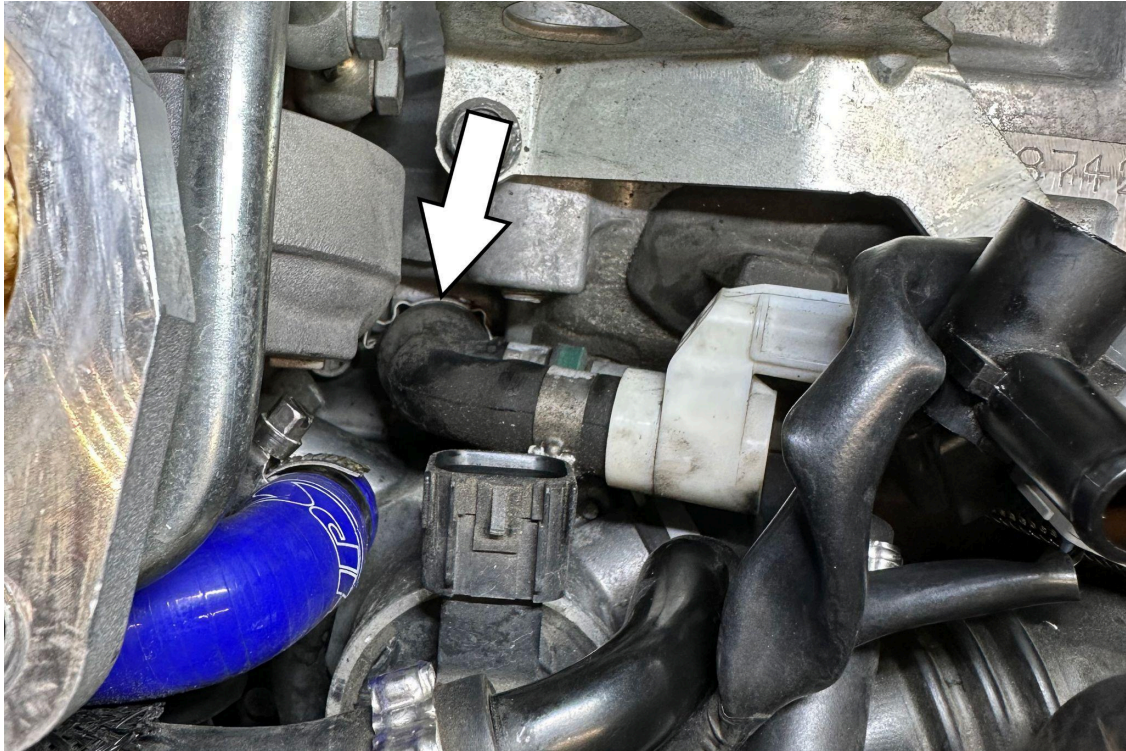
8. Install the oil catch can using the provided M6 bolt and washer at the bottom and the M8 bolt and washer on top. **Loosely** install the lower M6 bolt just to help align the mounting points. Fully fasten the M8 bolt. Once the M8 bolt is secured, remove the M6 bolt and continue to the next step.



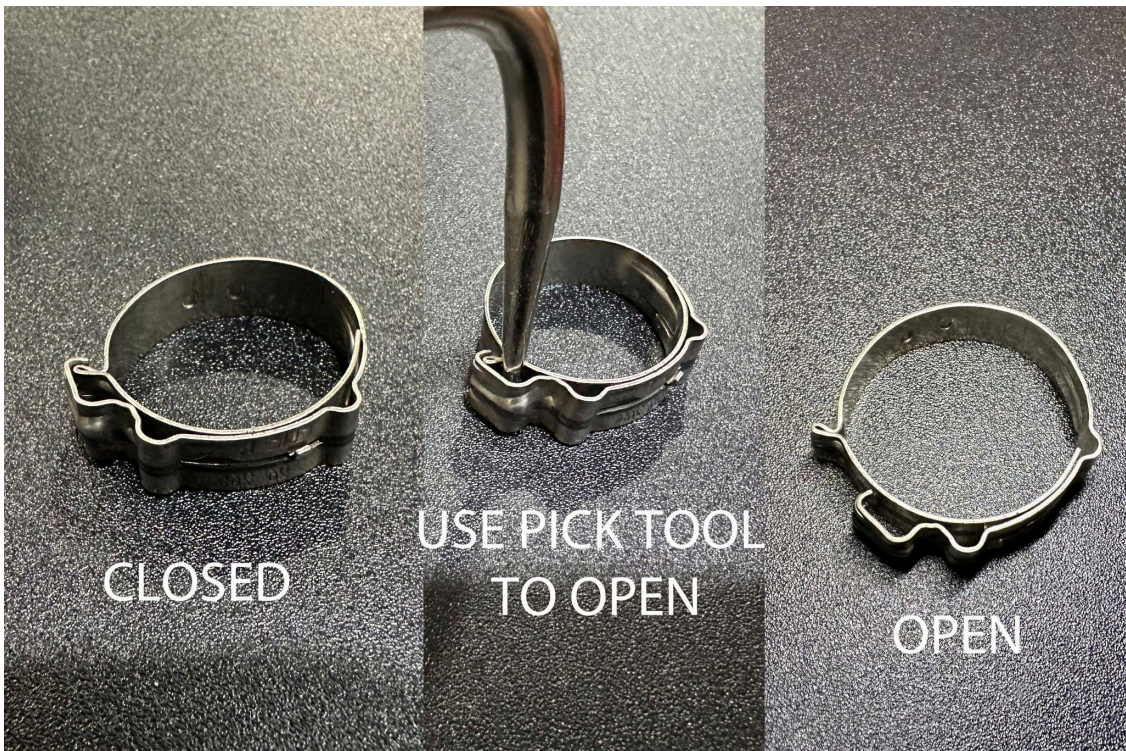
9. With the M6 bolt removed, sandwich the harness bracket onto the oil catch can bracket and reinstall the provided M6 bolt and washer. Reinstall the stock bolt onto the lower mounting hole of the harness bracket.



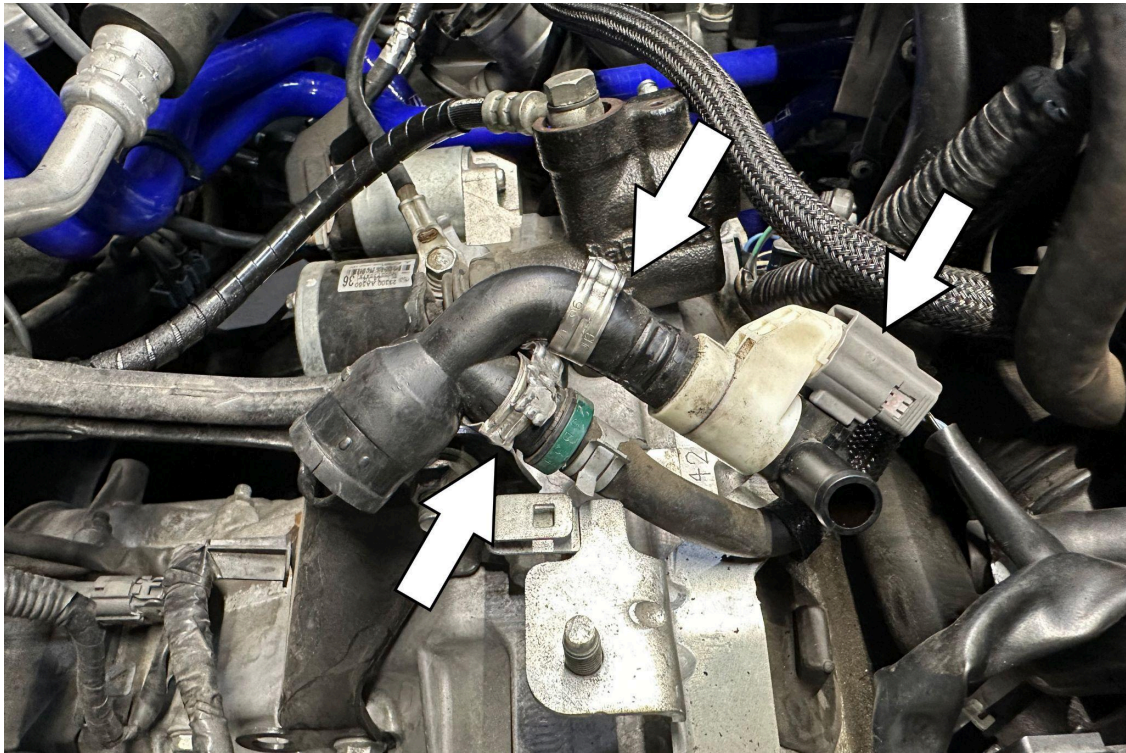
10. Unplug the gray harness connected to the PCV hose and remove the black elbow from the hose. Unplug the harness on top of the PCV hose for clearance.



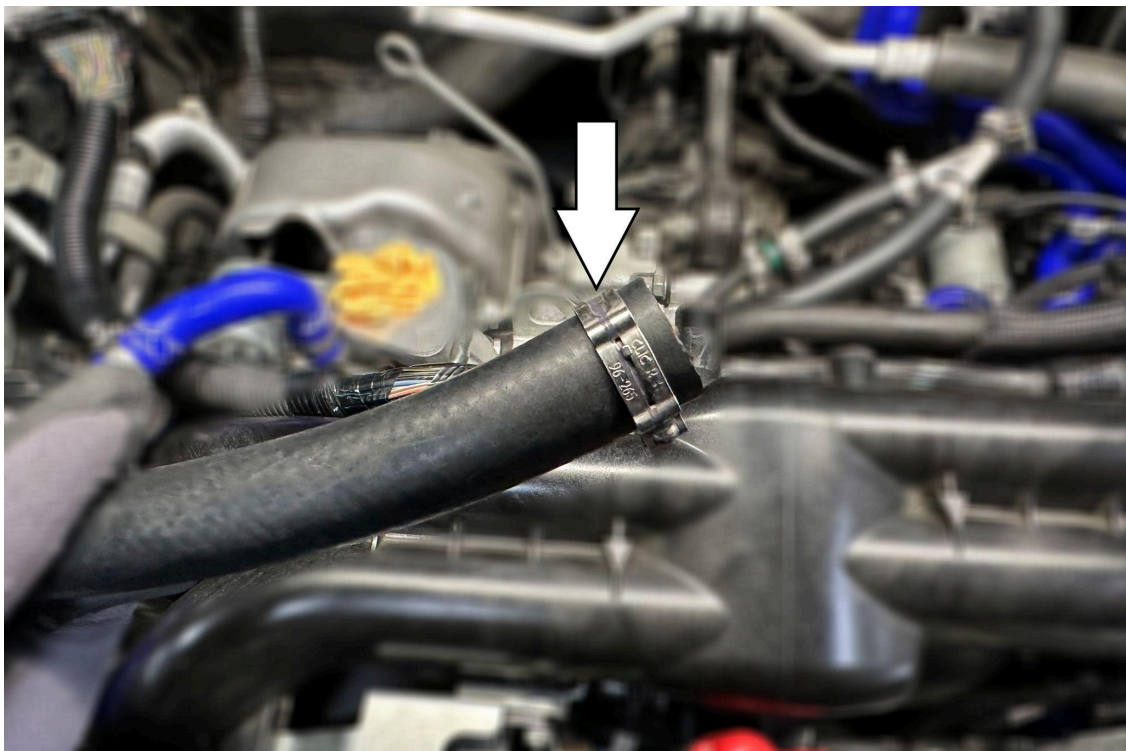
11. Remove the PCV hose from the PCV valve by unclipping the clamp at the base of the hose close to the engine block.



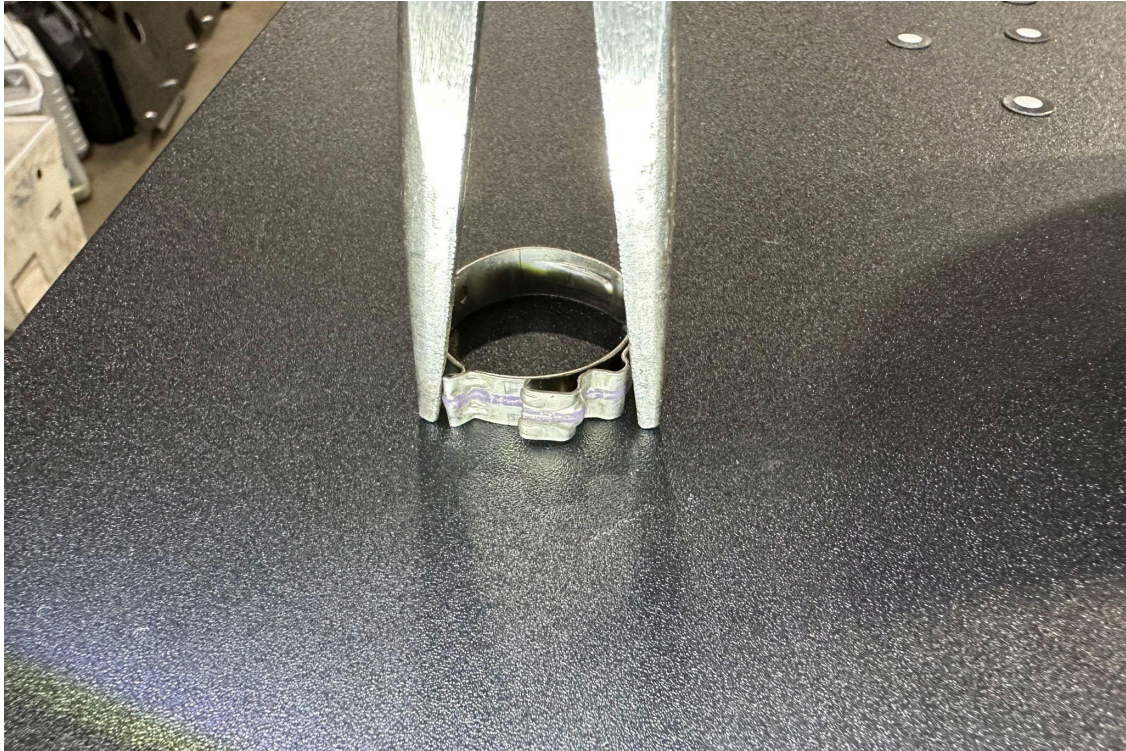
12. The picture above shows how to open the original PCV valve clamp. The original clamp will be reused when installing the new hose.



13. Remove the PCV hose from the two points shown. Then, reconnect the gray electrical connector.



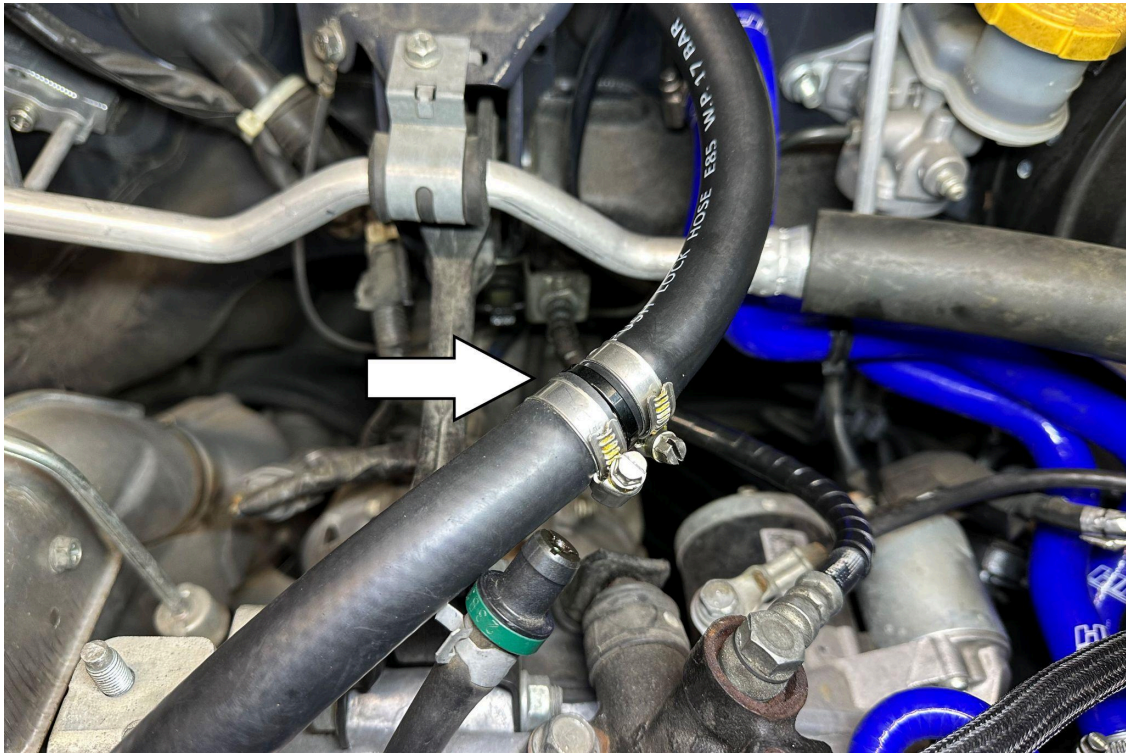
14. Install the original PCV clamp onto the AN-12 push lock hose. Install the hose with the clamp to the PCV valve.



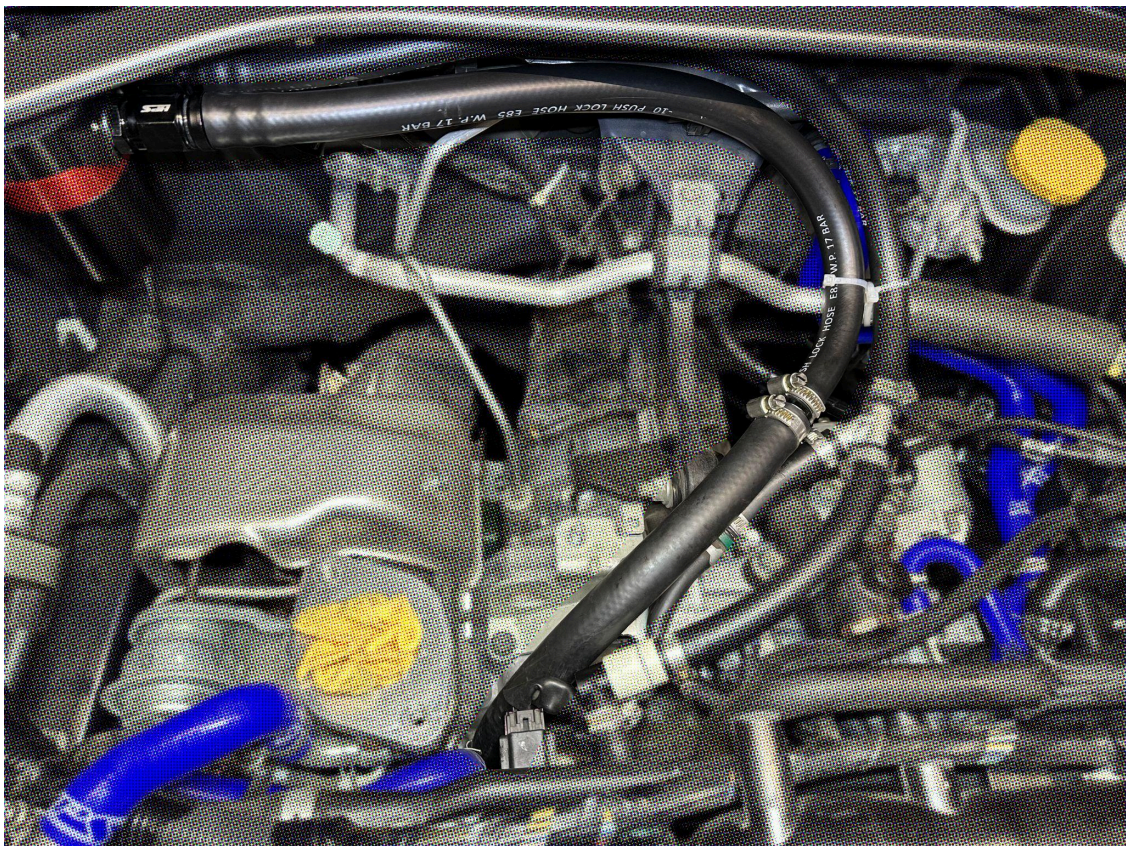
15. To tighten the original clamp when the AN-12 hose is installed onto the PCV valve, use long needle nose pliers and squeeze the clamp close until the clamp snaps together. Refer to the closed position on step 10.



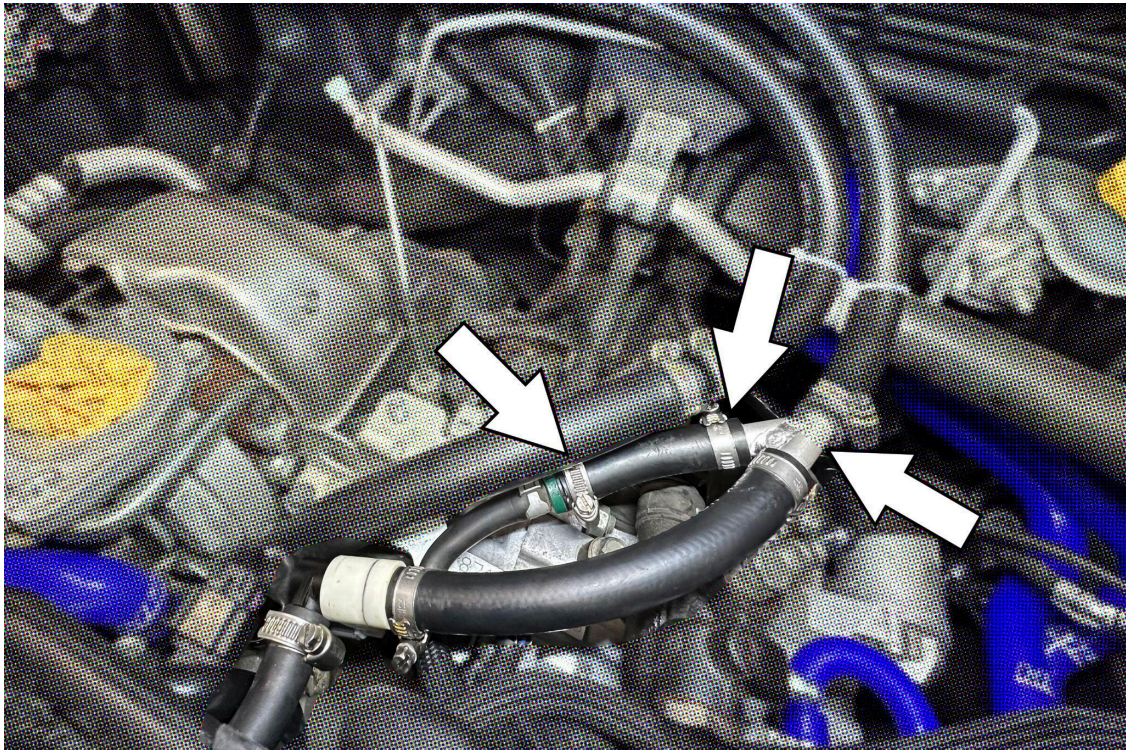
16. The original clamp installed on the PCV valve, when closed, will look like the picture above. Reconnect the black electrical connector.



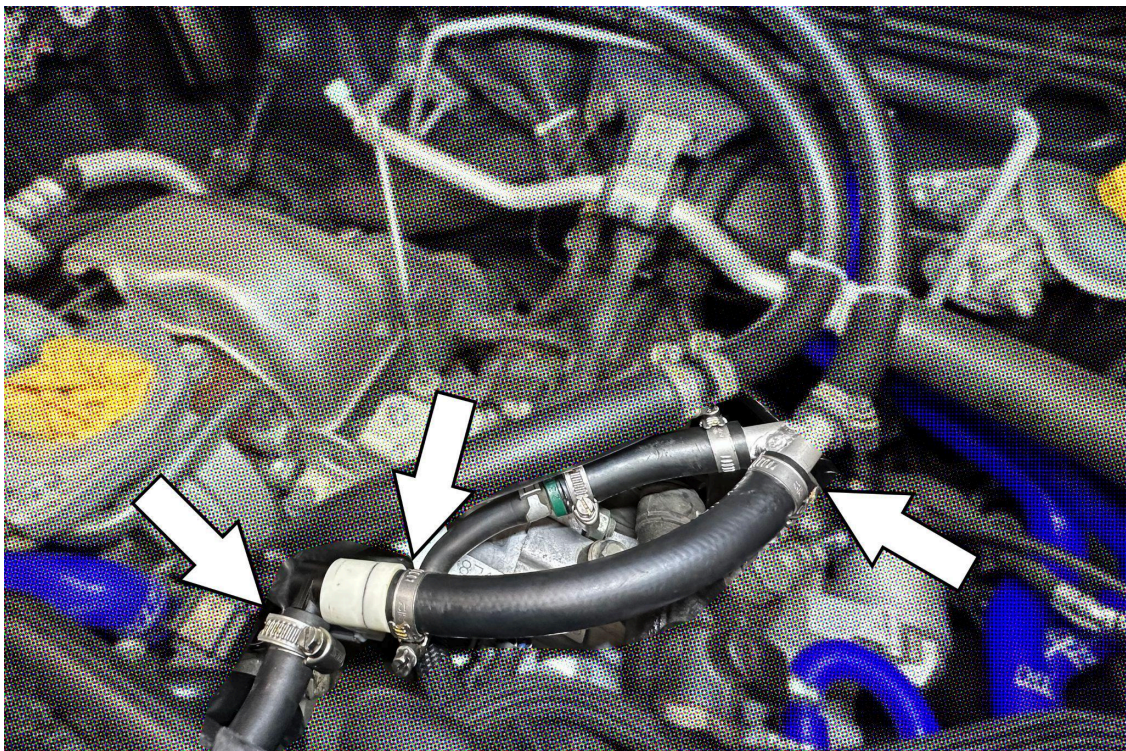
17. Install the 5/8" to 3/4" union to the AN-12 hose and install the AN-10 hose to the other side. Then secure them using two provided 16-27mm hose clamps.



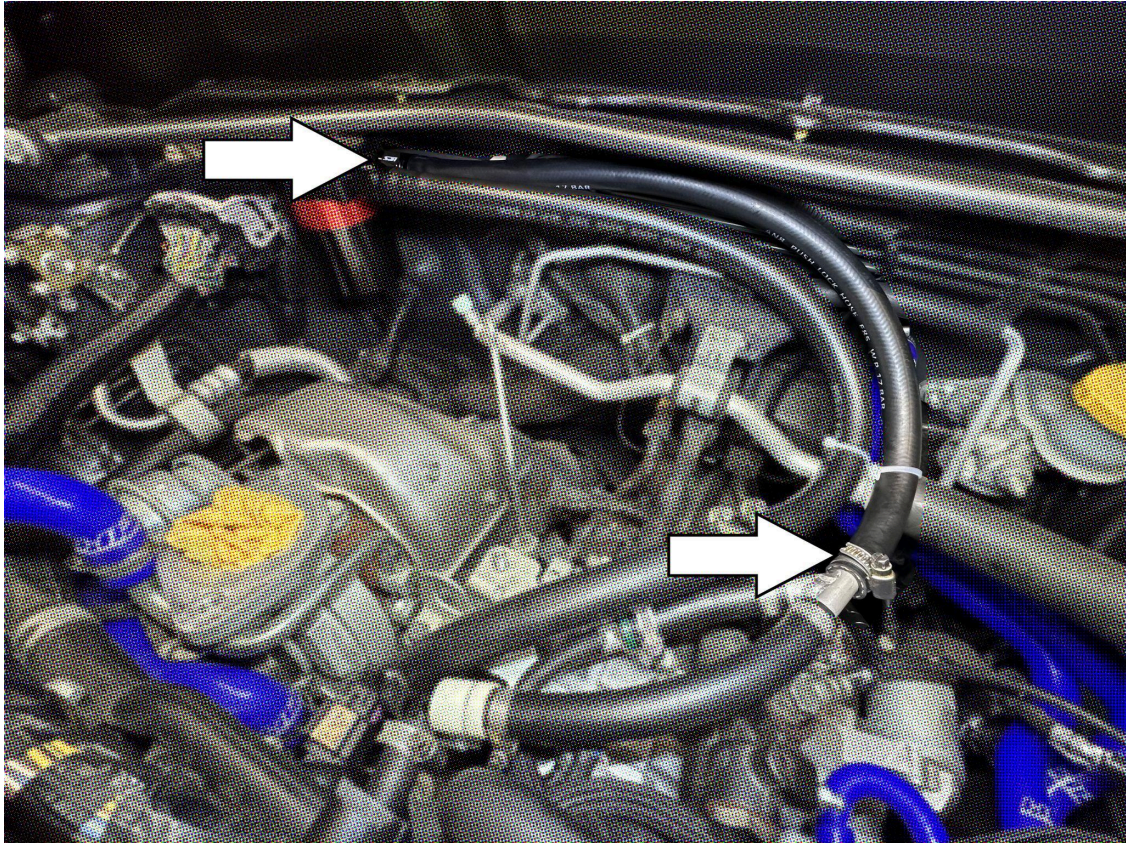
18. Push the AN-10 hose end fitting onto the AN-10 hose. Thread the hose end fitting onto the adapter on the oil catch can and fasten it securely.



19. Connect and secure the 4" long AN-8 hose to the check valve and the provided Y connector using the provided 12-22mm clamps.



20. Use another 12-22mm clamp to secure the original PCV hose to the plastic black 90 degree barb. Slide two 12-22mm clamps onto the 7" long AN-8 hose, then connect one side to the stock white plastic connector and the opposite side onto the Y connector.



21. Connect the 21" long AN-8 hose to the Y connector and use the 12-22mm clamp to secure the hose. Push on the AN-8 hose end fitting to the other side of the AN-8 hose. Thread the hose end fitting onto the adapter on the oil catch can and fasten it securely.



22. Place the intercooler back into position. Don't forget any gaskets that may have been removed during the removal process. Reconnect the throttle body coupler and secure the hose clamp. Reconnect the blow off valve recirculation hose and vacuum hose. Fasten the bolts to secure the intercooler.

## **FINAL STEPS**

Upon completion of the installation, reconnect the negative battery terminal before you start the engine. Double check to make sure everything is tight and properly positioned before starting the vehicle.

Start the engine. Let the car idle for 3 minutes. Perform a final inspection before driving. Listen carefully for any odd noises or rattles prior to taking it for a test drive. If any problems arise, go back and check the hoses and clamps that may be causing the issue and correct the problem.

Ensure that the dipstick on the HPS oil catch can is fully seated. Failure to install the dipstick properly will result in a check engine light and poor performance.



**Also available for:**  
**Subaru 2008-2014 Impreza WRX 2.5L Turbo**  
**Subaru 2009-2010 Impreza 2.5 GT 2.5L Turbo**



**HPS Performance Air Intake Kit**  
Part Number [827-566](#)



**HPS Silicone Radiator Coolant Hose Kit**  
Part Number [57-1064](#)



**HPS Silicone Heater Coolant Hose Kit**  
Part Number [57-2131H](#)



**HPS Aluminum Belt Cover**  
Part Number [71-100](#)

Contact an authorized HPS Performance dealer or  
visit us at [hpsperformance.com](http://hpsperformance.com) for more details