



Performance Belt Cover Kit

Part Number: 71-102

Subaru 2015-2021 WRX 2.0L Turbo

Installation Instructions

For technical inquiries please email us at tech@hpsperformance.com

In the email, please include the following information for faster response:

- Year / Make / Model / Engine of your vehicle.
- If it is a fitment issue, please include pictures showing the fitment problem.
- If there are missing parts, please list the part number(s) from the bill of materials on the 2nd page.
- Optional but recommended – Your contact phone number and preferred call back time.

You can also give us a call via 626-747-9200 for tech support Monday-Friday, 9:00am-5:00pm Pacific Time.

Bill of Materials

Kit Number: 71-102

Line #	Description	Part Number	Qty
1	Belt Cover	PC-102	1
2	Rubber Vibration Mount, M6 5/8" Tall, Male-to-Female	HW-RM6-062-MF	1
3	Flat Washer, M6 x 16mm OD	HW-FW6L	1
4	Nylock Nut, M6	607512	1
5	Stainless Steel Flanged Button Head Bolt, M6 x 1.00, 30mm Long	97654A667	1
6	Stainless Steel Flanged Button Head Bolt, M6 x 1.00, 10mm Long	97654A379	1
7	Aluminum Unthreaded Spacer, 13 mm OD, 13 mm Long	94669A178	1

- **Before installing any parts of this belt cover kit, please read the instructions thoroughly.**
- **Verify the contents of this kit before disassembling your vehicle.**
- **DO NOT INSTALL IF ANY PARTS ARE MISSING OR DAMAGED. CONTACT tech@hpsperformance.com IMMEDIATELY. WE ARE NOT RESPONSIBLE FOR ANY DAMAGE CAUSED DUE TO IMPROPER INSTALLATION.**
- **Installation requires moderate mechanical skills. A qualified mechanic is highly recommended.**
- **Do not attempt to install the kit while the engine is hot.**
- **This installation may require removal of coolant lines that may be hot.**
- **For technical inquiries, please email us at tech@hpsperformance.com**

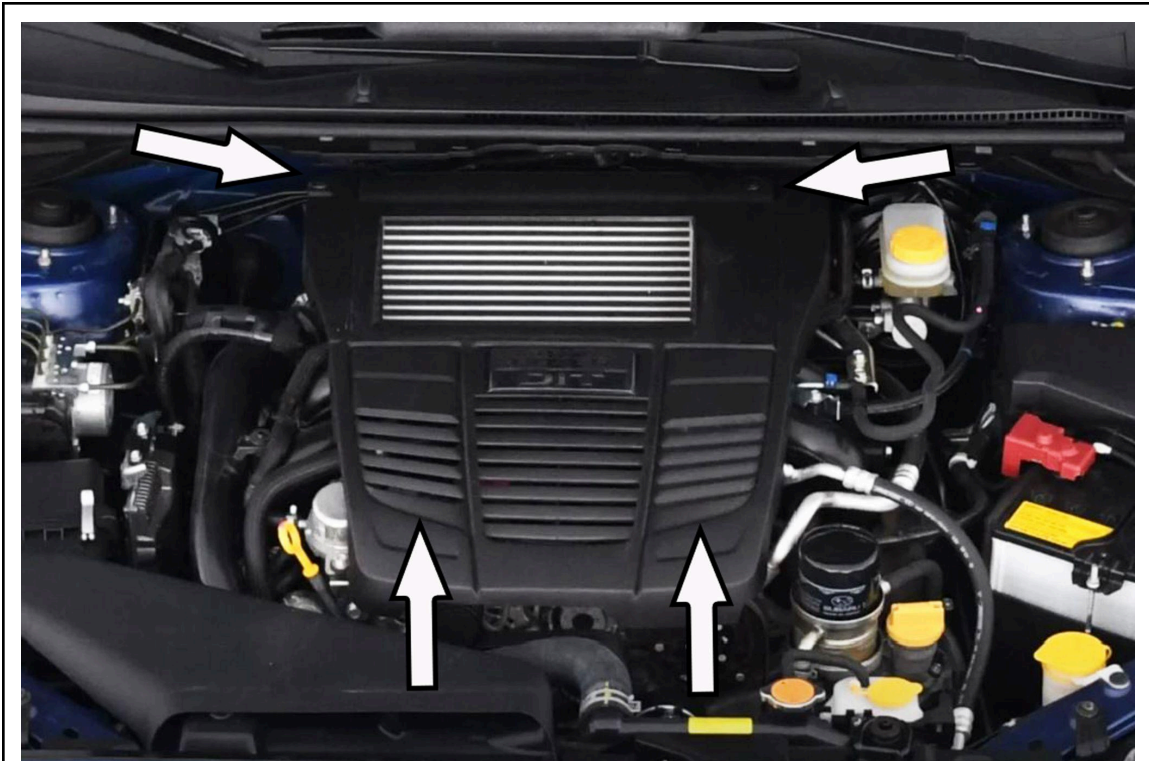
PLEASE READ CAREFULLY BEFORE INSTALLATION!

This installation is not for the novice customer. Install this product with EXTREME caution! Misuse of this product can destroy your engine! If you are not mechanically inclined, please have a professional automotive mechanic install this kit.

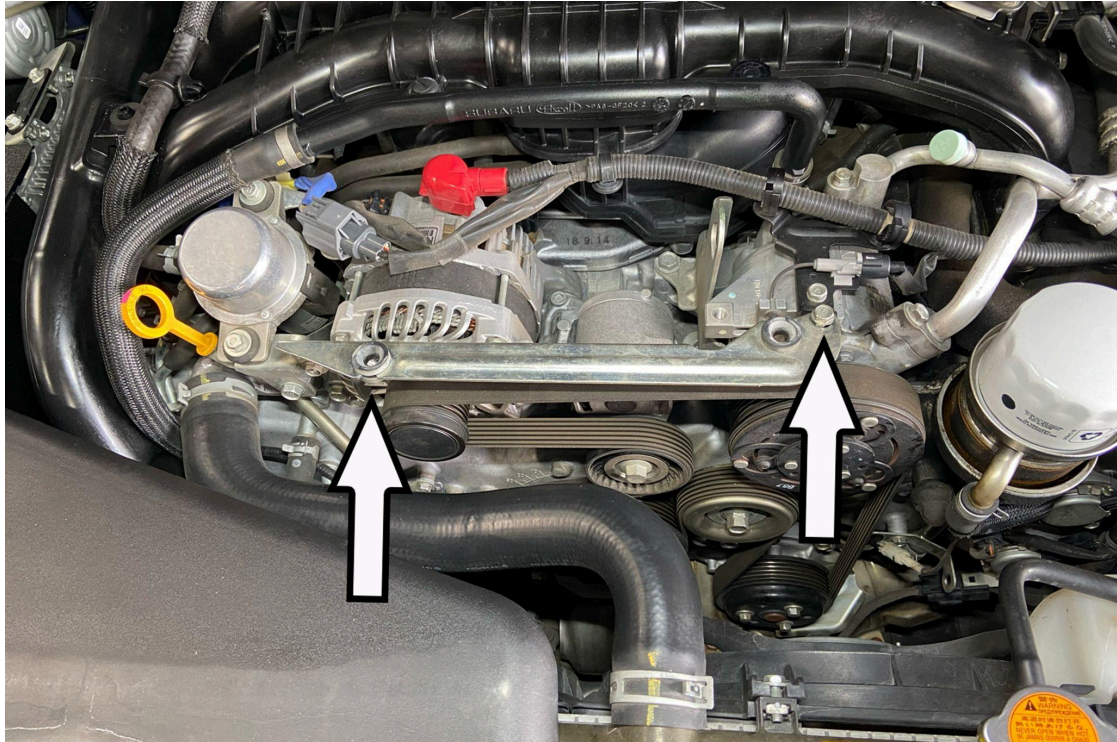
NOTE: HPS holds no responsibility for any engine damage that results from misuse of this product.

GETTING STARTED

1. Turn the ignition OFF. If the engine has run within the past two hours, let it cool down.



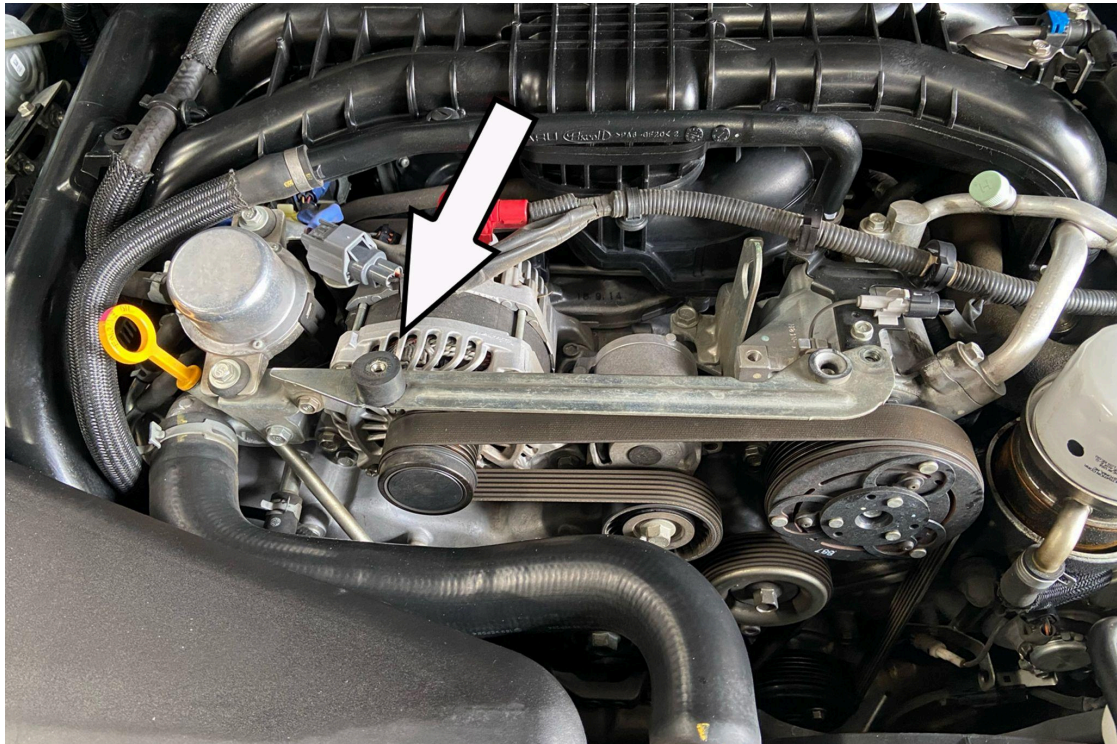
2. Remove the retaining clips securing the rear of the engine cover. Lift the front of the engine cover from its grommets and remove the engine cover from the vehicle.



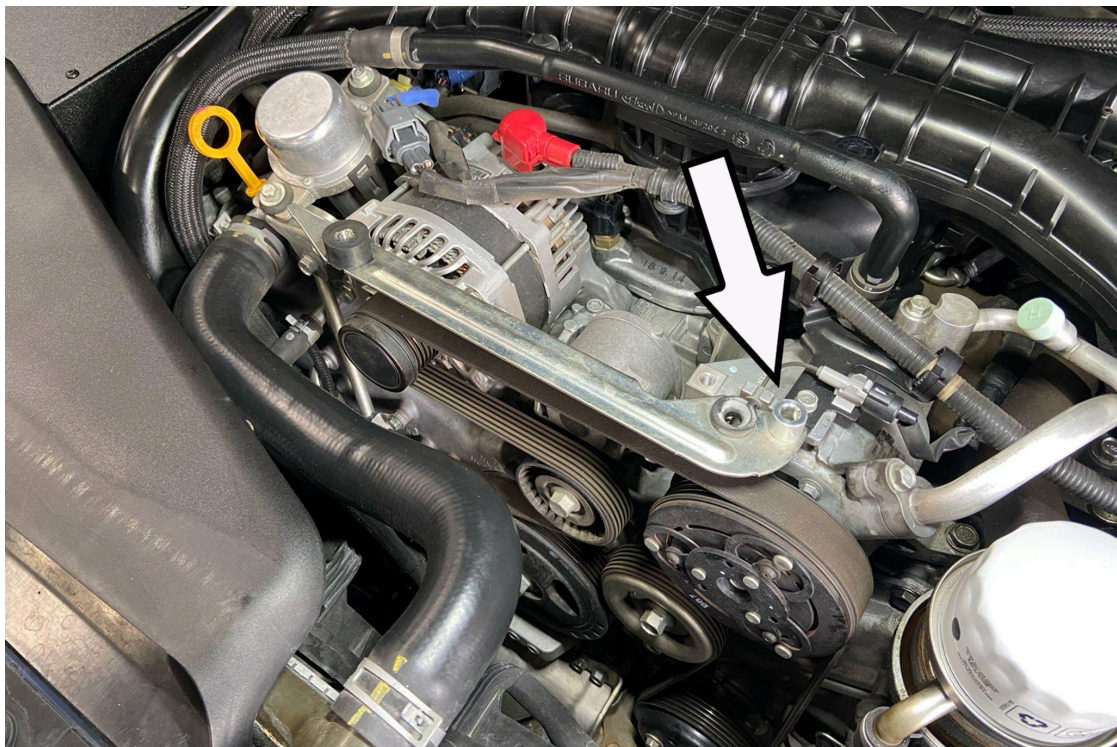
3. Remove the rubber grommet and the 10mm bolt from the engine cover bracket.



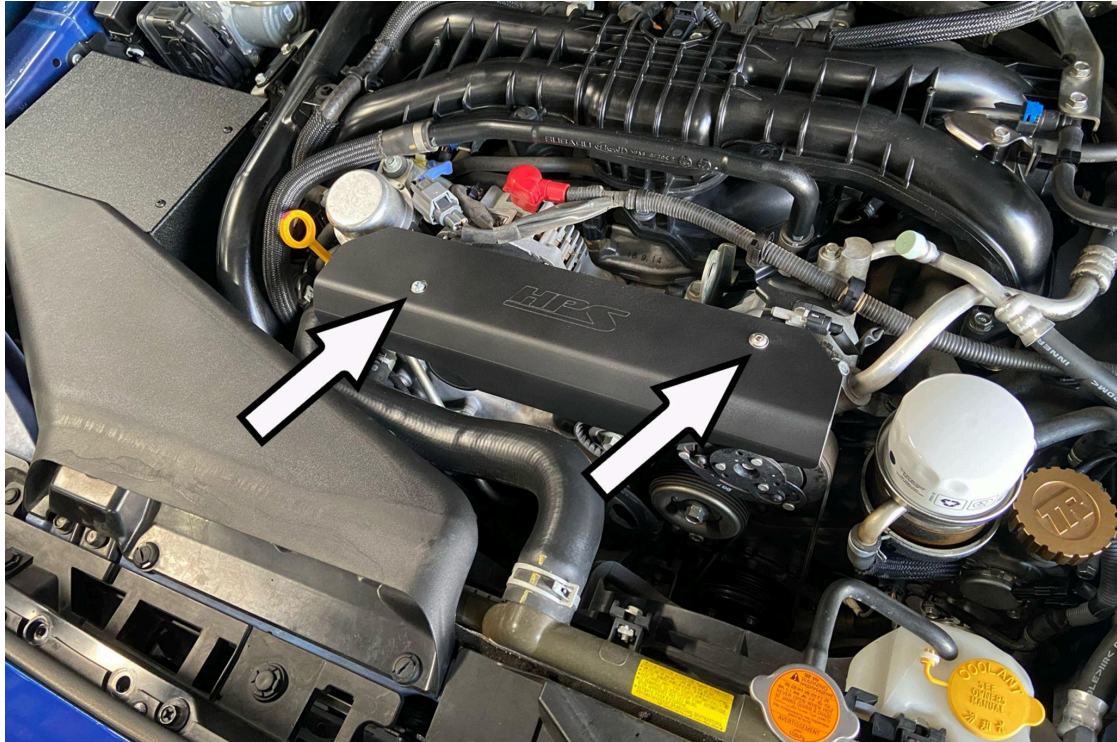
4. Preassemble the provided rubber vibration mount with the flat washer and the 6mm Nylock nut as shown in the image above.



5. Install the vibration mount where the original rubber grommet was mounted.



6. Align the provided aluminum spacer over the hole where the 10mm bolt was removed.



7. Secure the HPS Belt Cover to the engine cover bracket using the provided 10mm long bolt on the passenger side and the 30mm long bolt on the driver side.

NOTE: Once the HPS Belt Cover is in place, the factory engine cover will not be able to be properly reinstalled onto the engine without further modifications.

FINAL STEPS

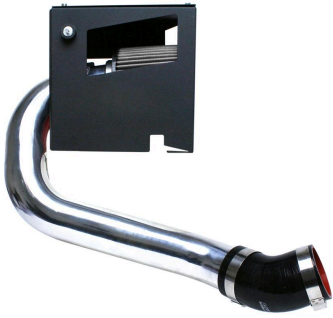
Once the belt cover has been positioned, double check to make sure everything is tight and properly positioned before starting the vehicle.

Listen carefully for any odd noises or rattles prior to taking the vehicle for a test drive. If any problems arise, go back and check the position of the cover and the hardware to correct the problem.

Periodically, recheck the position of the belt cover and make sure there is proper clearance around and along the product. Failure to follow proper maintenance procedures may cause damage to the belt cover and will void the warranty.



**Also available for
Subaru 2015-2021 WRX 2.0L Turbo**



HPS Performance Air Intake Kit
Part Number [827-545](#)



HPS Aluminum Oil Catch Can Kit
Part Number [860-007](#)



HPS Silicone Radiator Hose Kit
Part Number [57-2092](#)



HPS Performance Front Strut Bar
Part Number [42-116](#)



HPS Performance Drop-In Air Filter
Part Number [HPS-452421](#)



**HPS Performance Stainless Steel Magnetic
Oil Drain Plug**
Part Number [MDP-M16x150](#)

Contact an authorized HPS Performance dealer or
visit us at hpsperformance.com for more details