



## **Performance Intercooler Pipe Kit**

**Part Number: 17-133**

**Honda 2017-2021 Civic Type R 2.0L Turbo**

## **Installation Instructions**

For technical inquiries please email us at [tech@hpsperformanceproducts.com](mailto:tech@hpsperformanceproducts.com)

In the email, please include the following information for faster response:

- Year / Make / Model / Engine of your vehicle.
- If it is a fitment issue, please include pictures showing the fitment problem.
- If there are missing parts, please list the part number(s) from the bill of materials on the 2nd page.
- Optional but recommended – Your contact phone number and preferred call back time.

You can also give us a call via 626-747-9200 for tech support Monday-Friday, 9:00am-5:00pm Pacific Time.

# Bill of Materials

## Kit Number: 17-133

Line	Description	Part#	Quantity
1	Charge Pipe - Hot Side	529-621	1
2	Charge Pipe - Cold Side, Upper	529-622	1
3	Charge Pipe - Cold Side, Lower	529-623	1
4	Mounting Bracket	530-890	1
5	2.25" Silicone Hump Coupler, 2.5" Length Fluorolined, Aramid	CH-FK8-1	2
6	2.75" 90 deg Silicone Elbow, 1" legs, Fluorolined	CH-FK8-4	1
7	2.5" Silicone Coupler, 4" length, Fluorolined	CH-FK8-2	1
8	2.38"-2.50" Silicone Reducer, Fluorolined	CH-FK8-3	1
9	Embossed Hose Clamp, 60mm - 80mm	EMSC-60-80	6
10	Embossed Hose Clamp, 50mm - 70mm	EMSC-50-70	4
11	FIC Clamp, 12mm - 14mm	FIC-12	1
12	M6 Flange Nut	HW-N6	1
13	1/8" NPT Plug	4464K561	1
14	M6x1.00 Stud, 25mm Long	92605A136	1

- Before installing any parts of this intercooler pipe kit, please read the instructions thoroughly.
- Verify the contents of this intercooler pipe kit before disassembling your vehicle.
- **DO NOT INSTALL IF ANY PARTS ARE MISSING OR DAMAGED. CONTACT [tech@hpsperformanceproducts.com](mailto:tech@hpsperformanceproducts.com) IMMEDIATELY. WE ARE NOT RESPONSIBLE FOR ANY DAMAGE CAUSED DUE TO IMPROPER INSTALLATION.**
- Installation requires moderate mechanical skills. A qualified mechanic is highly recommended.
- Do not attempt to install the intercooler pipe kit while the engine is hot.
- For technical inquiries, please email us at [tech@hpsperformanceproducts.com](mailto:tech@hpsperformanceproducts.com)

## **PLEASE READ CAREFULLY BEFORE INSTALLATION!**

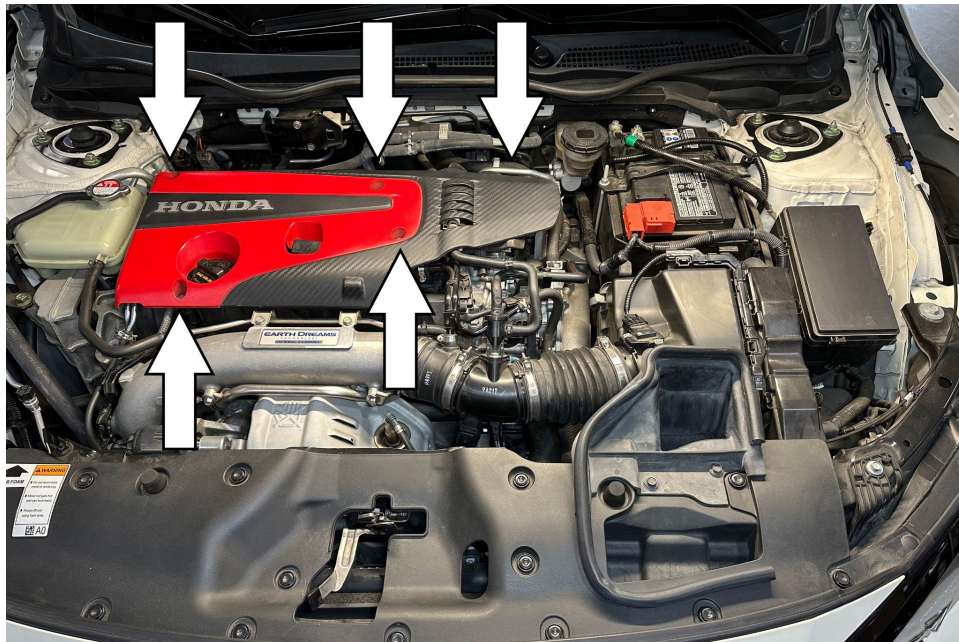
This installation is not for the novice customer. Install this product with EXTREME caution! Misuse of this product can destroy your engine! If you are not mechanically inclined, please have a professional automotive mechanic install this kit.

**NOTE: HPS holds no responsibility for any engine damage that results from misuse of this product.**

## **GETTING STARTED**

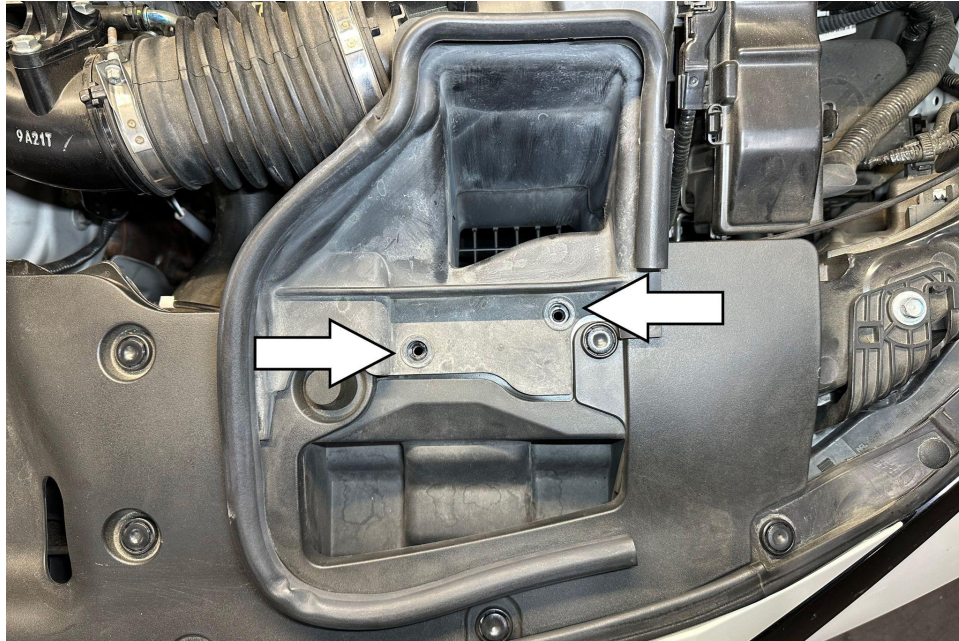
1. Turn the ignition OFF and disconnect the vehicle's negative battery cable. If the engine has run within the past two hours let it cool down.

NOTE: Disconnecting the negative battery cable erases pre-programmed electronic memories. Write down all memory settings before disconnecting the negative battery cable. Some radios will require an anti-theft code to be entered after the battery is reconnected. The anti-theft code is typically supplied with your owner's manual. In the event your vehicles' anti-theft code cannot be recovered, contact an authorized dealership to obtain your vehicle's anti-theft code. We also highly recommend NOT discarding any stock parts after the installation.



2. Remove the (5) 10mm bolts securing the engine cover and remove the engine cover from the vehicle.



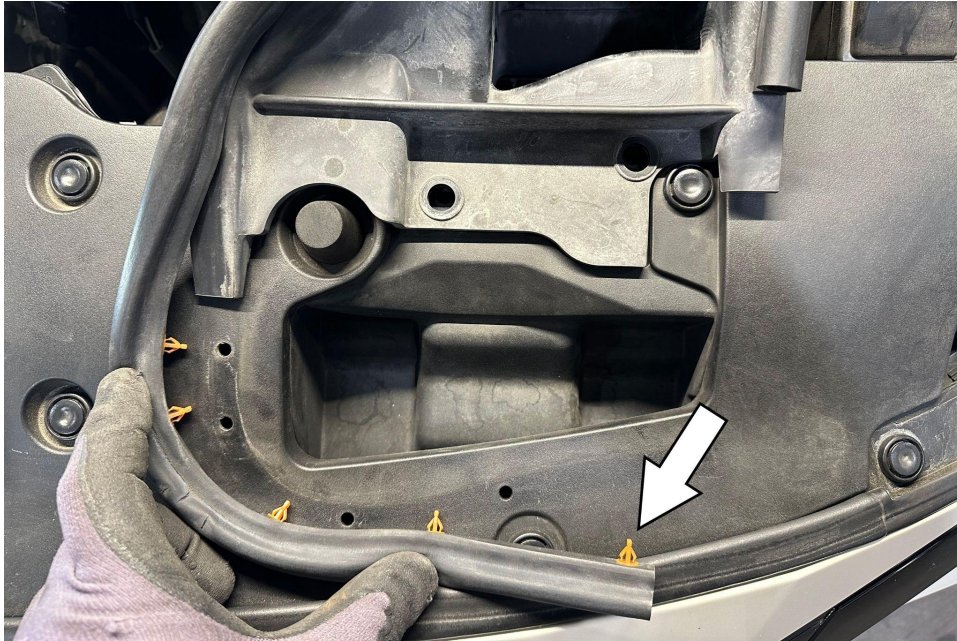


3. Remove two mounting bolts securing the air duct.

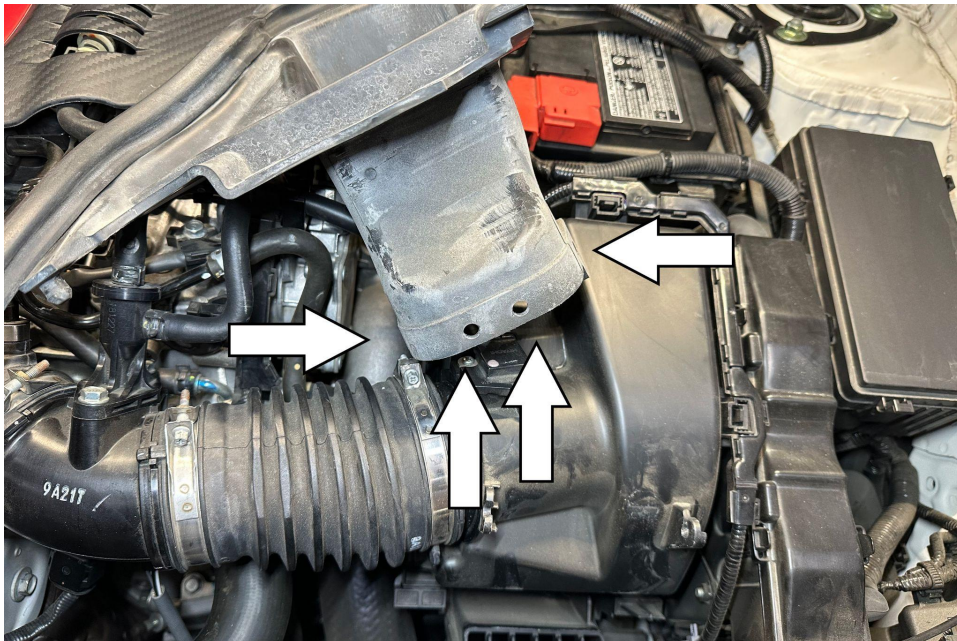


4. Unclip the air duct rubber mount on both sides.



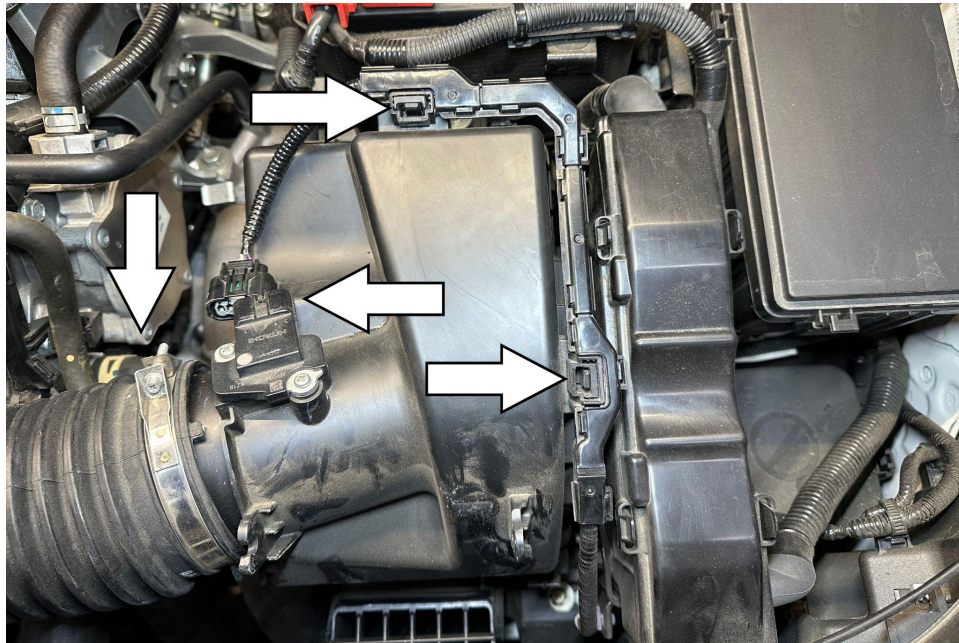


5. Remove the air duct clips from the plastic trim.

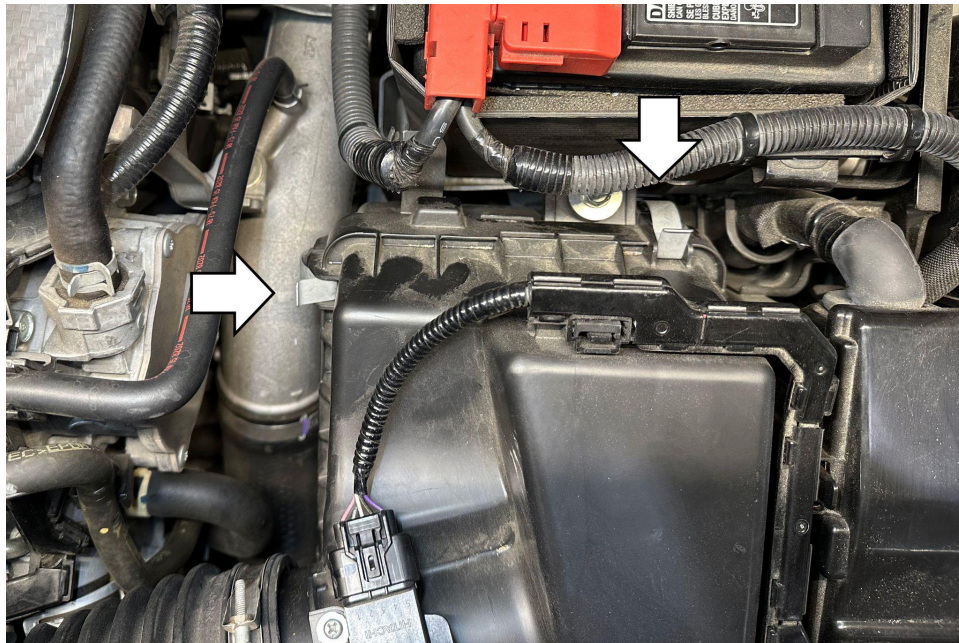


6. Remove the air duct from the lower air box assembly by pulling the air duct away from the tabs on the lower air box.



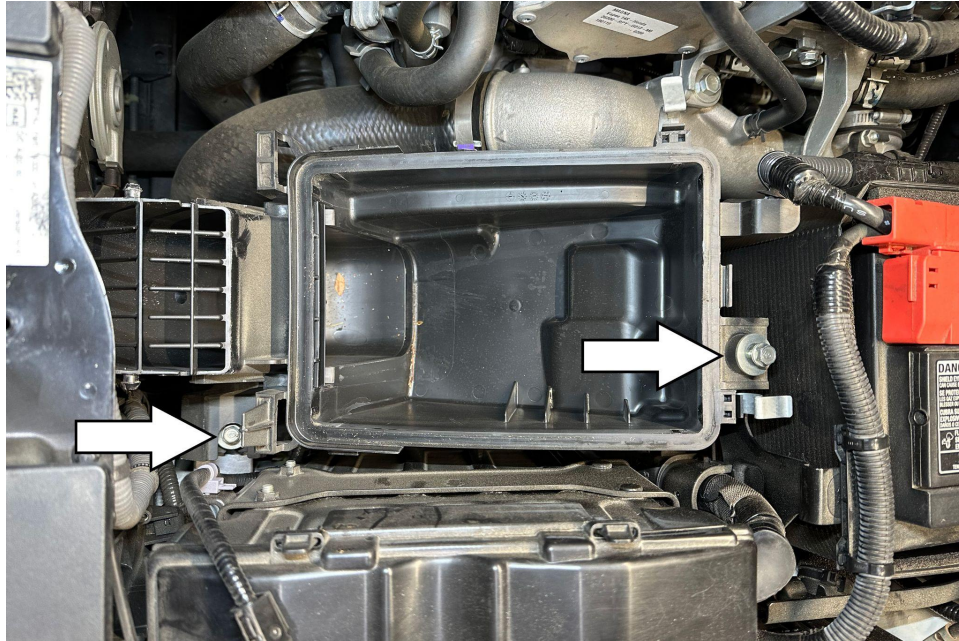


7. Disconnect the MAF sensor then unclip the electrical harness from the upper air box. Loosen the hose clamp securing the intake tube from the air box using either a #1 Phillips screwdriver or a 5.5mm socket.



8. Unbuckle the upper air box then remove the upper air box and air filter from the vehicle.



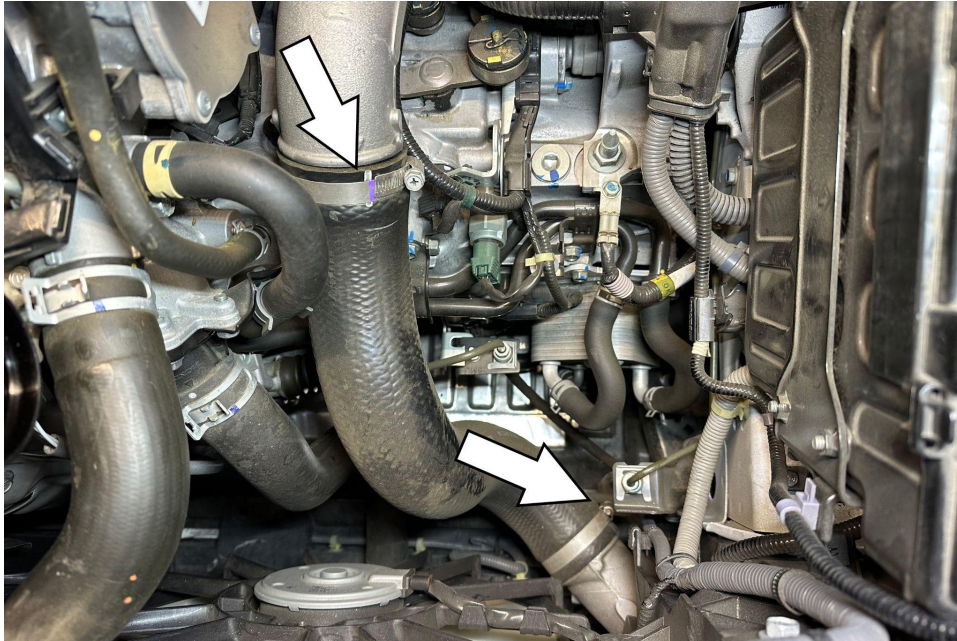


9. Remove the (2) lower air box mounting bolts.

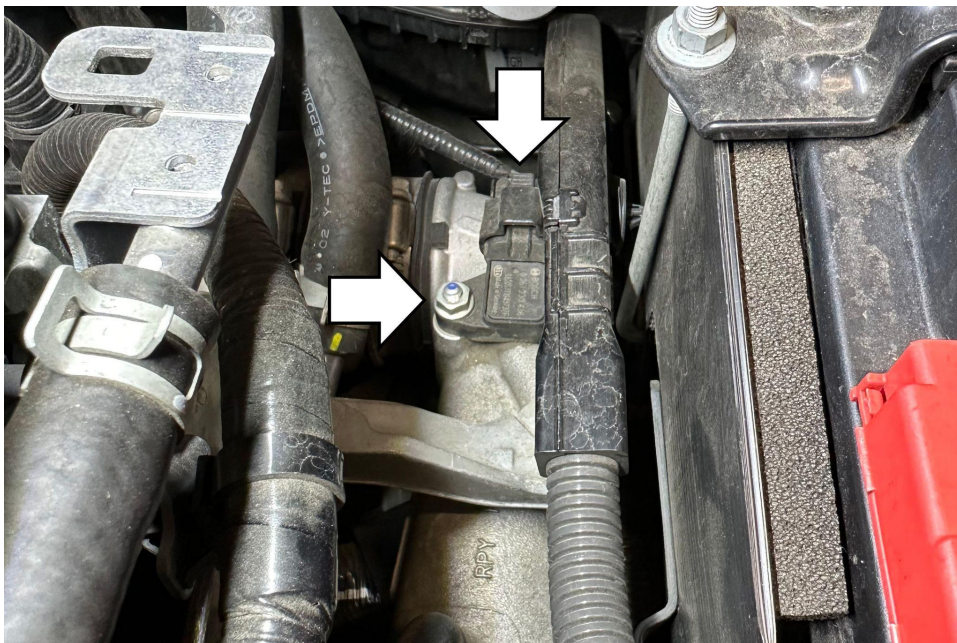


10. Remove the lower air box by pulling up on the air box to release it from the grommet towards the front.



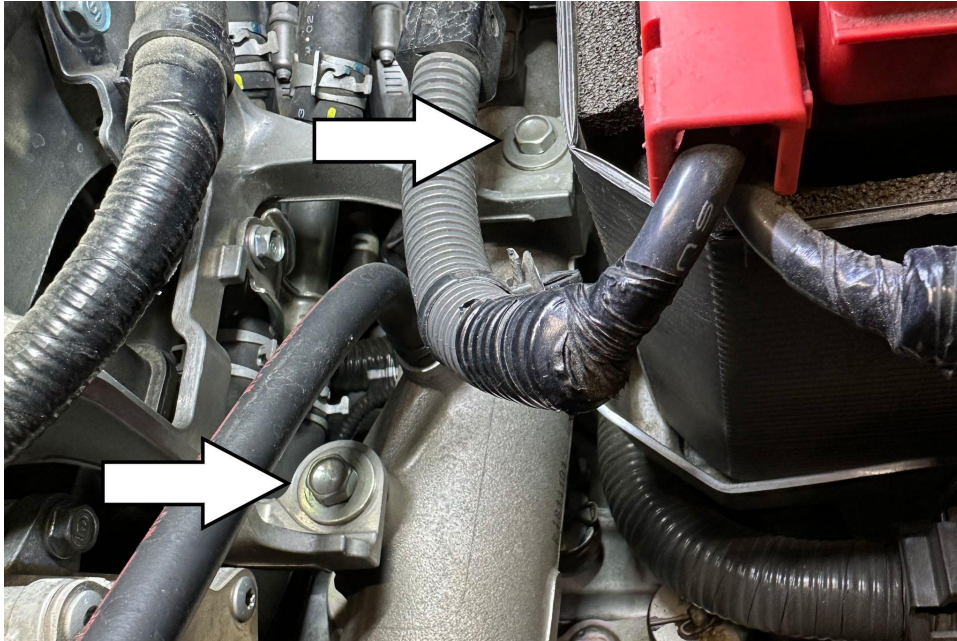


11. Remove the stock curved intercooler hose by loosening the two hose clamps on both ends.

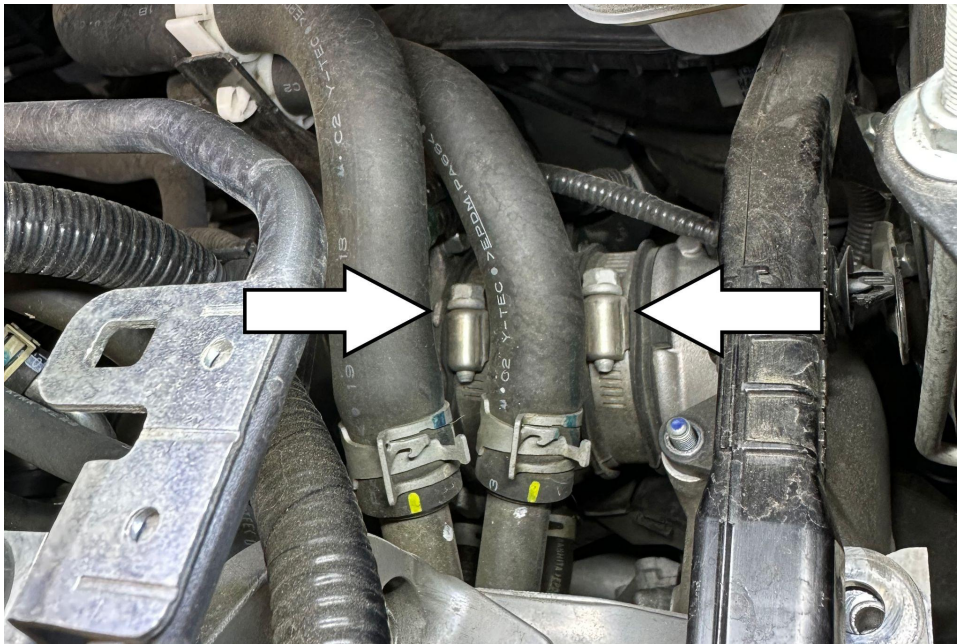


12. Disconnect the electrical harness from the MAP sensor. Next, loosen and remove the nut to remove the MAP sensor from the pipe.



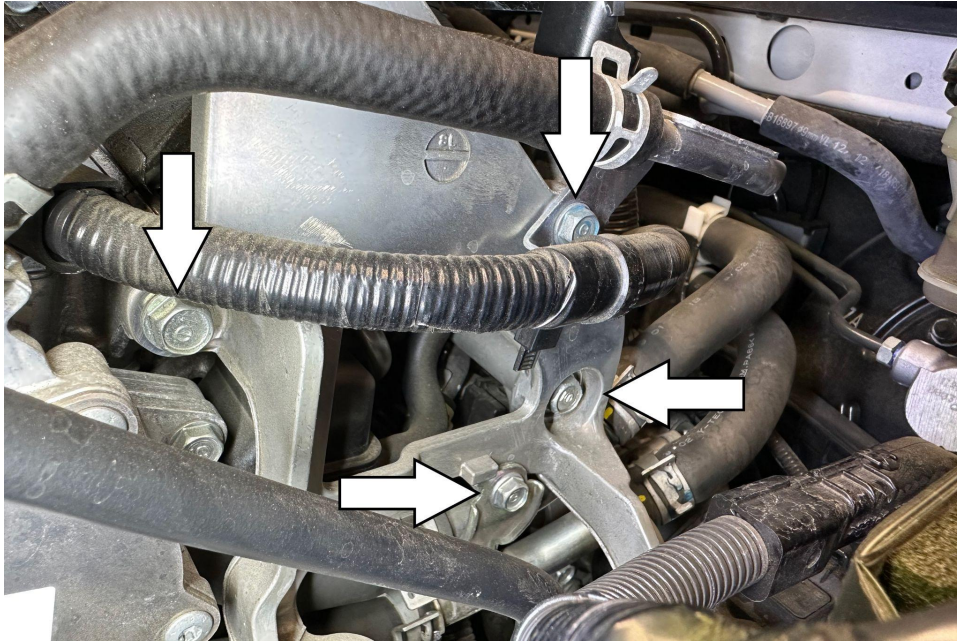


13. Remove the (2) mounting bolts for the upper charge pipe.

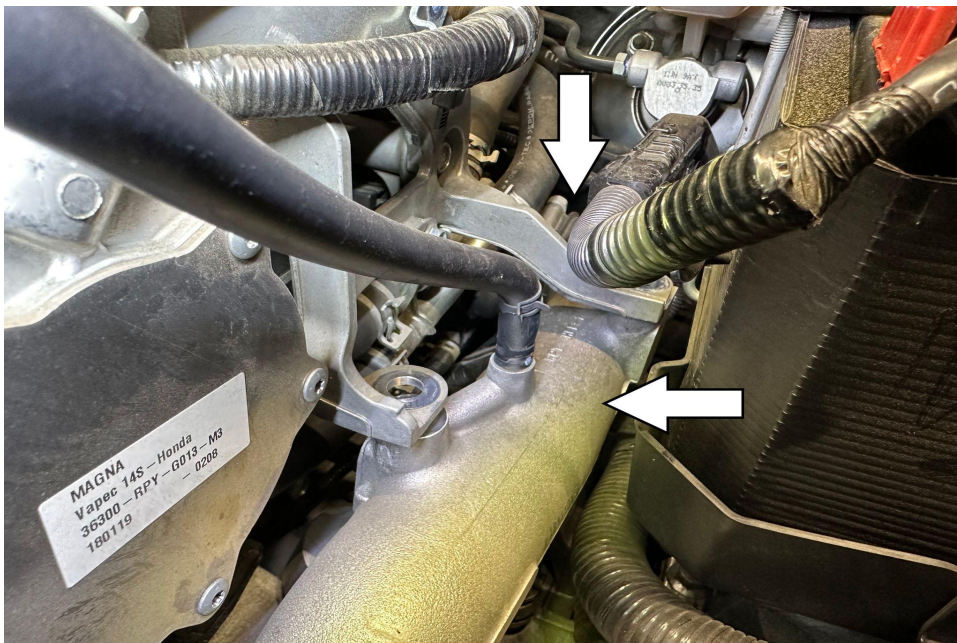


14. Loosen the hose clamps securing the factory charge pipe coupler from the throttle body.



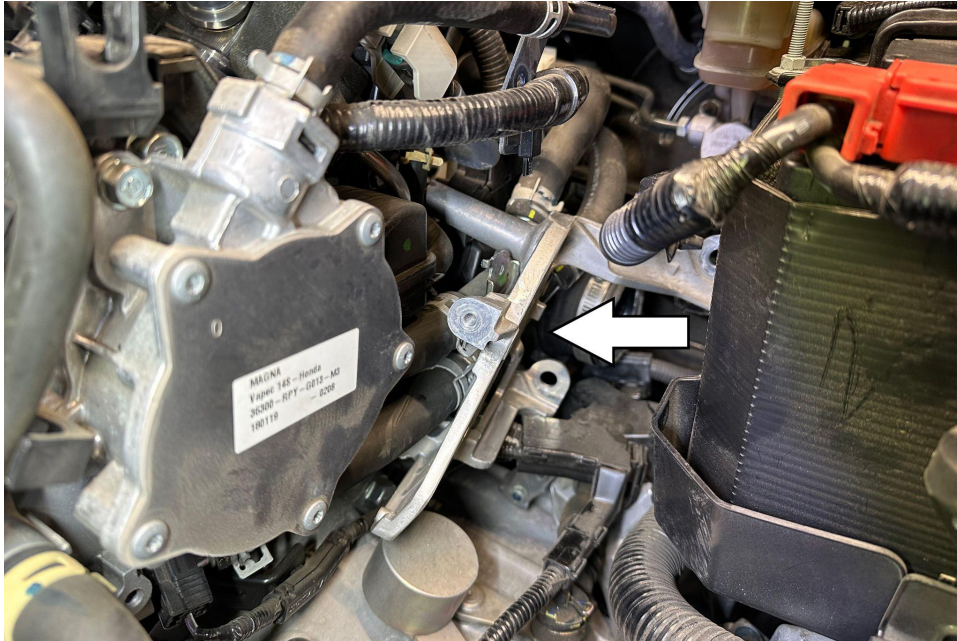


15. Remove the (4) upper charge pipe mounting bracket bolts as shown above.

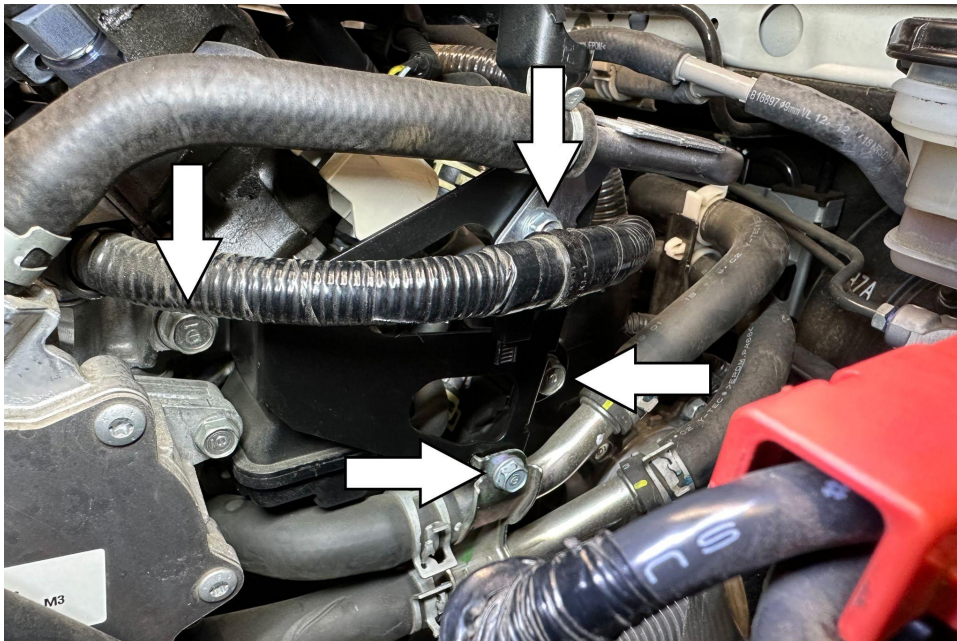


16. Disconnect the vacuum hose, then remove the upper charge pipe from the vehicle. Once the upper charge pipe is removed, remove the factory charge pipe coupler from the throttle body.

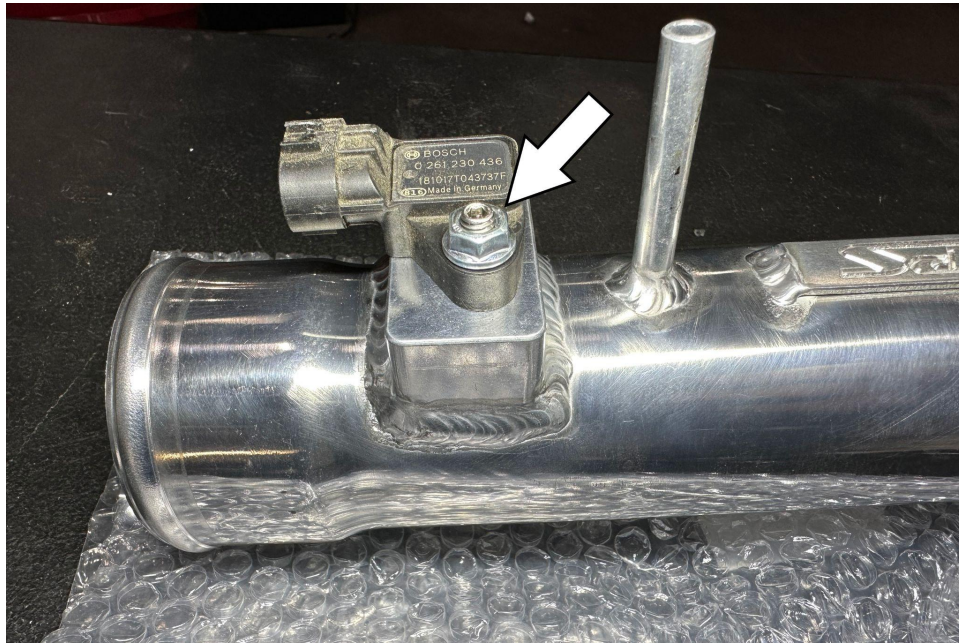




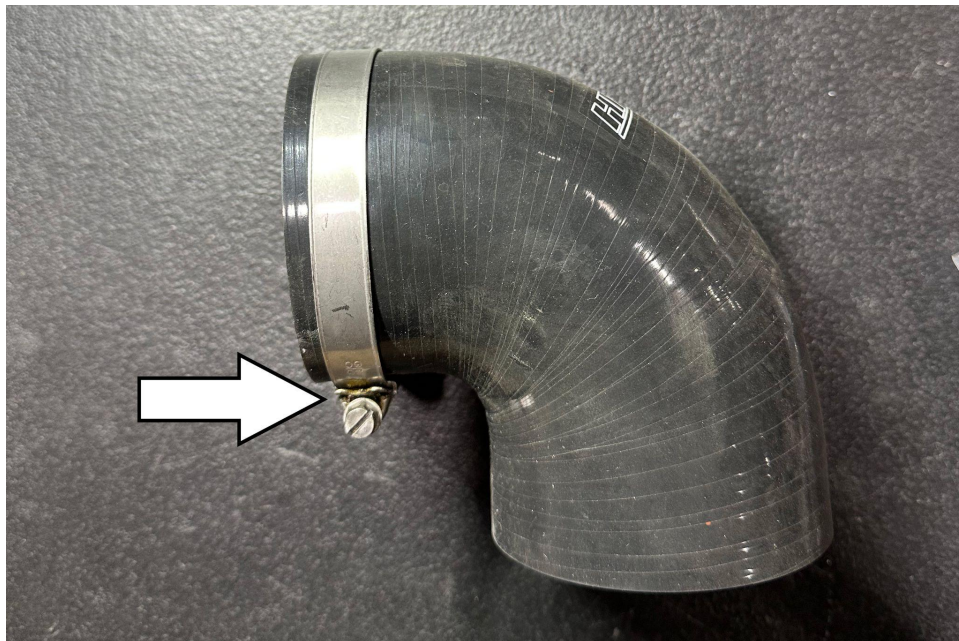
17. Carefully rotate and remove the upper charge pipe mounting bracket.



18. Install the provided HPS mounting bracket using the original hardware.

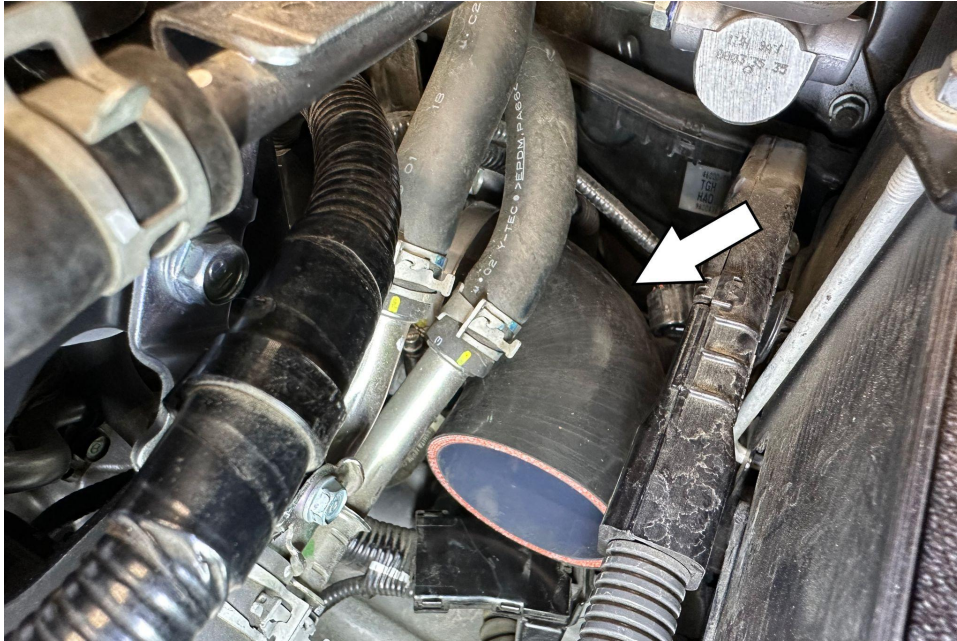


19. Install and secure the MAP sensor to the HPS upper charge pipe by installing the provided m6 stud (1) and nut (1).

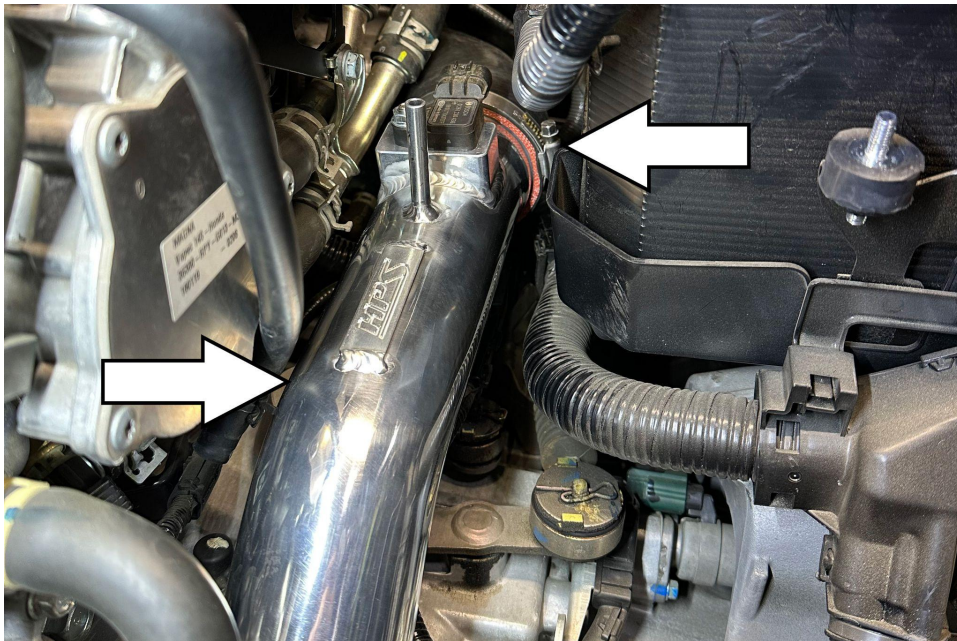


20. Loosely preinstall the hose clamp (60mm - 80mm) to the provided 90 degree coupler.



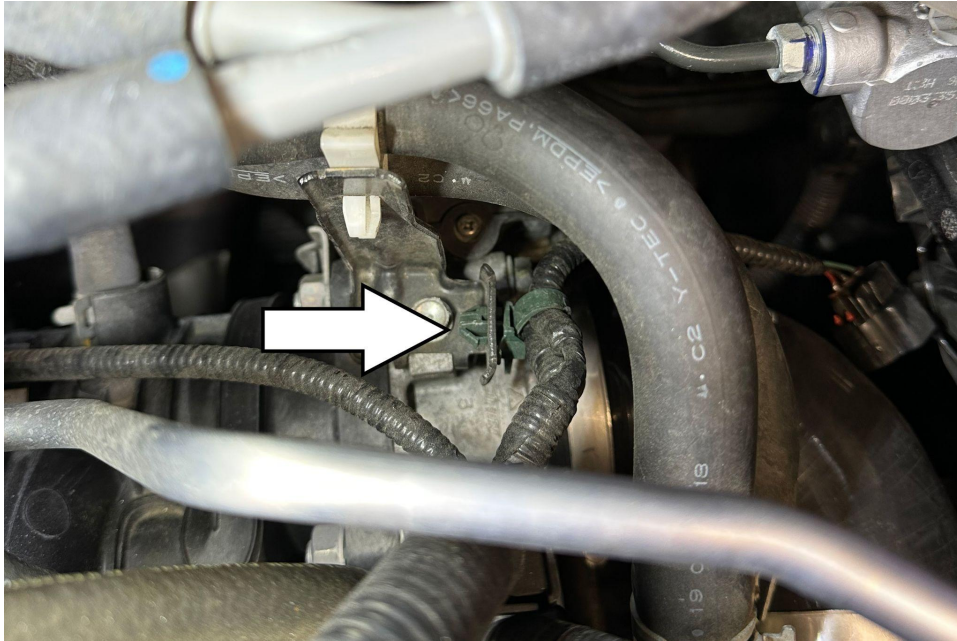


21. Install the 90 degree elbow onto the throttle body.

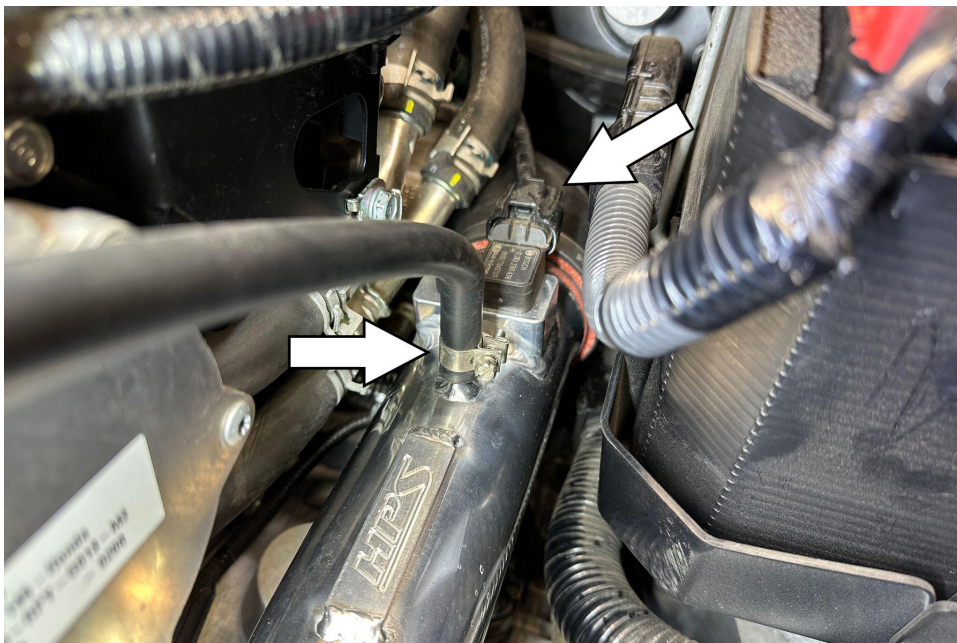


22. Install the HPS upper charge pipe into the coupler using the provided hose clamp EMSC 60mm - 80mm (1).

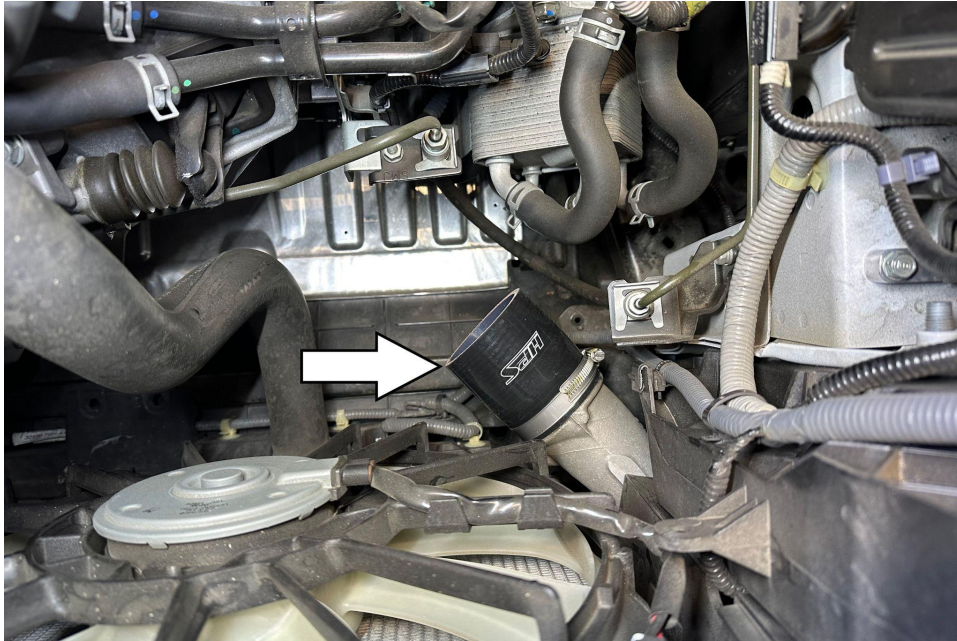




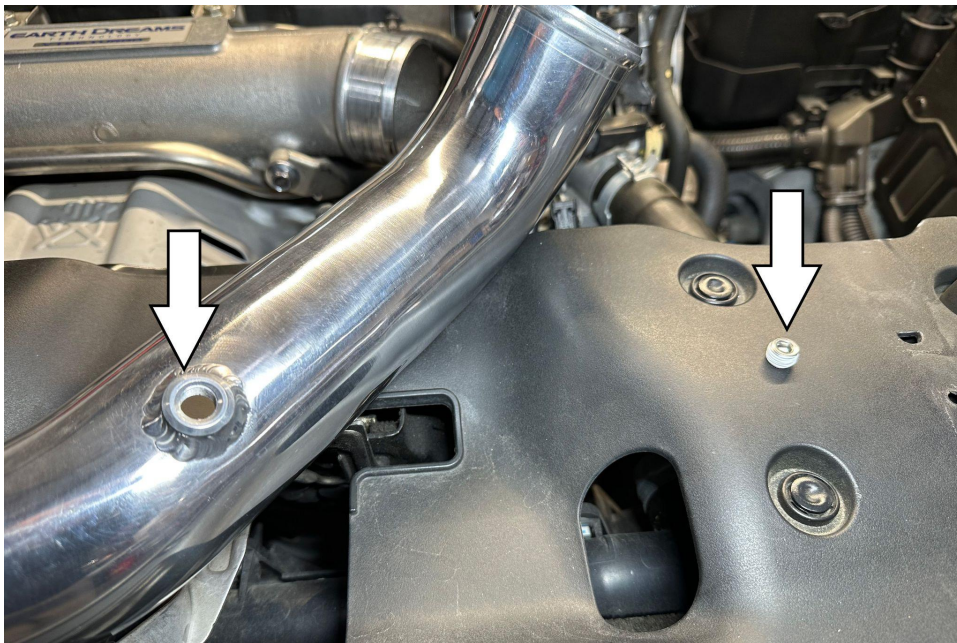
23. Unclip the MAP sensor harness mounting clip at the top of the throttle body.



24. Connect the MAP sensor. Connect the vacuum hose and secure it using the provided FIC-12 clamp.



25. Install the reducer coupler onto the intercooler along with the provided EMSC 60mm-80mm clamp (1).

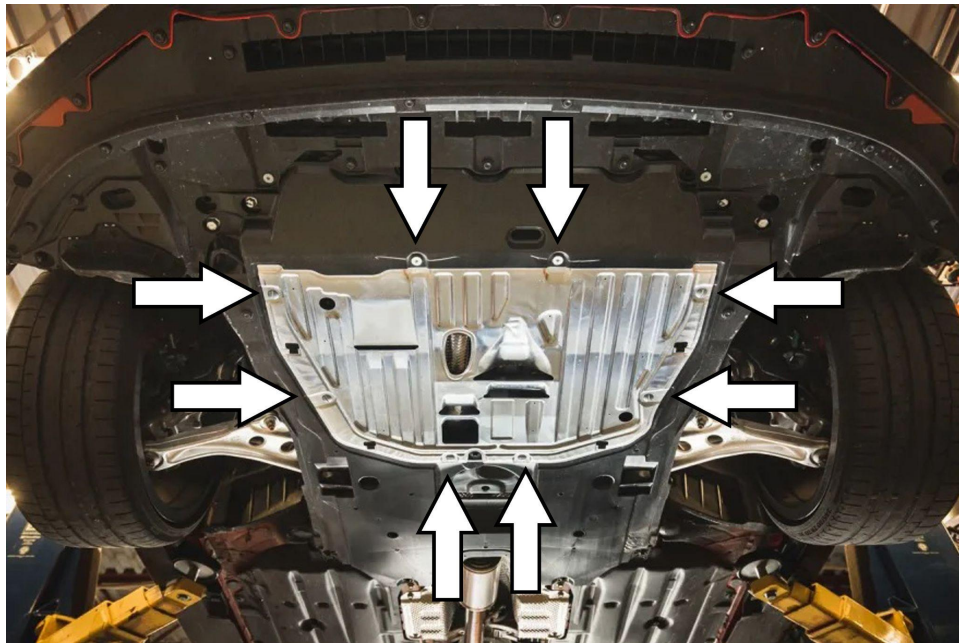


26. Install the 1/8 NPT plug into the HPS lower charge pipe using teflon tape.





27. Insert the HPS lower charge pipe into the intercooler then attach the lower charge pipe to the HPS upper charge pipe using the provided hump coupler along with the EMSC clamps 60mm - 80mm (3).

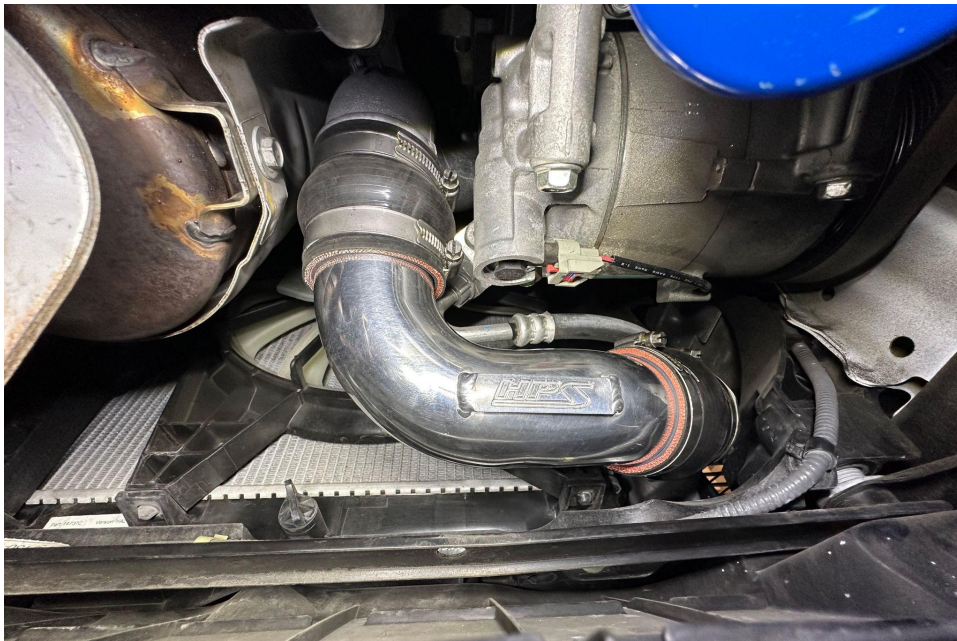


28. Remove the splash shield by removing the (8) mounting screws.





29. Loosen the hose clamps to remove the hot side intercooler hose.



30. Install the HPS lower charge pipe using the (2) hump couplers and the provided EMSC clamps 50mm - 70mm (4) clamps.

## **FINAL STEPS**

Once the intercooler pipe has been positioned, tighten all of the clamps and secure all of the parts.

Reinstall the intake system.

Reconnect the negative battery terminal before you start the engine. Double check to make sure everything is tight and properly positioned before starting the vehicle.

Start the engine. Let the car idle for 3 minutes. Perform a final inspection before driving. Listen carefully for any odd noises, rattles and/or air leaks prior to taking it for a test drive. If any problems arise go back and check the vacuum lines, hoses and clamps that may be causing leaks or rattles and correct the problem.

Reinstall the splash shield and any remaining items that were removed prior to the installation before test driving the vehicle.

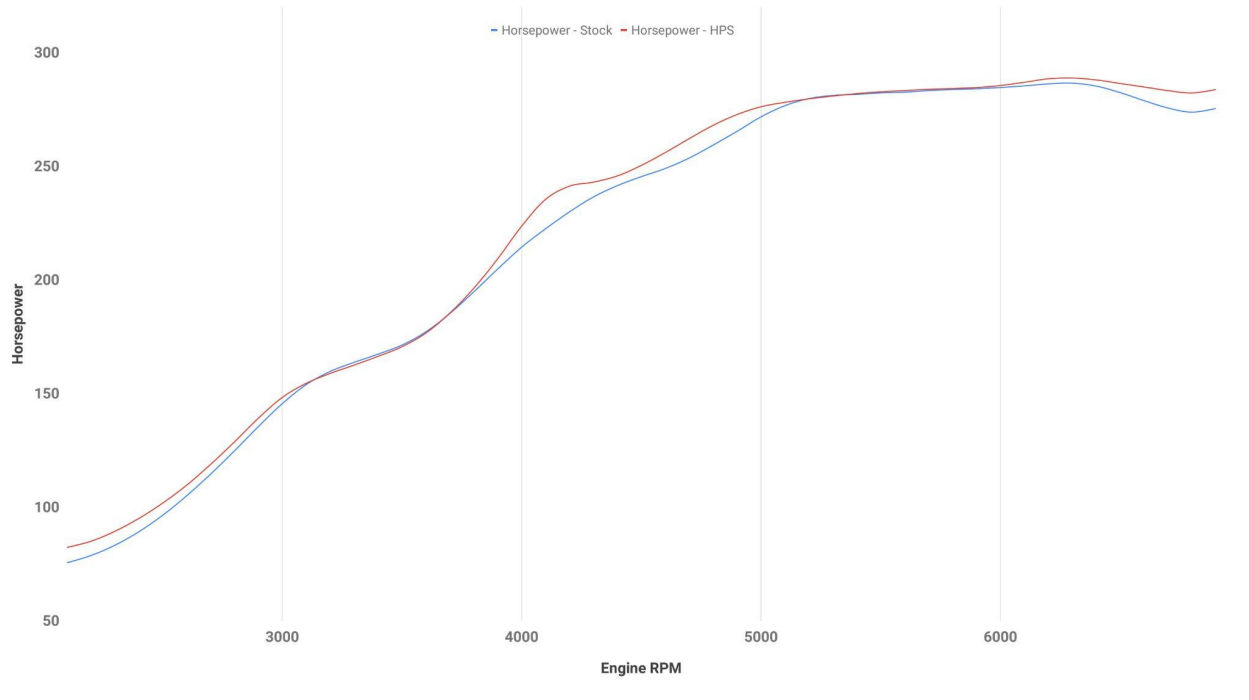
Periodically, recheck the alignment of the intercooler system and make sure there is proper clearance around and along the length of the intercooler pipe. Failure to follow proper maintenance procedures may cause damage to the intercooler pipe and will void the warranty.



HPS Performance Charge Pipe Kit (Cold and Hot Side)  
2017-2021 Honda Civic Type R 2.0L Turbo  
Part Number: 17-133

**Maximum Horsepower Gains = 13 whp @ 4100 rpm**

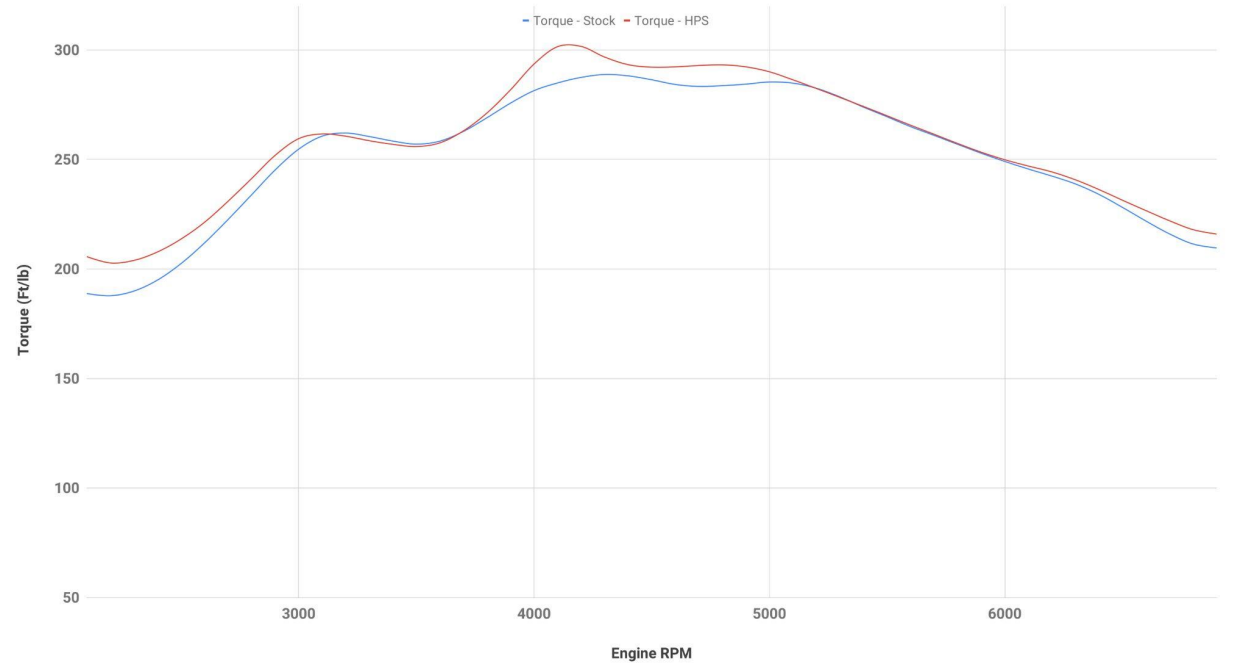
Tested Vehicle: 2019 Honda Civic Type R 2.0L Turbo



HPS Performance Charge Pipe Kit (Cold and Hot Side)  
2017-2021 Honda Civic Type R 2.0L Turbo  
Part Number: 17-133

**Maximum Torque Gains = 16.6 ft/lb @ 4100 rpm**

Tested Vehicle: 2019 Honda Civic Type R 2.0L Turbo



**Also available for 2017-2021 Honda Civic Type R 2.0L Turbo FK8**



**HPS Post MAF Silicone Intake Hose**

[Part Number 57-1765](#)



**HPS Performance Front Strut Bar**

[Part Number 42-111](#)



**HPS Magnetic Drain Plug**

[Part Number MDP-M14x150](#)

Contact an authorized HPS Performance dealer or  
visit us at [hpsperformanceproducts.com](http://hpsperformanceproducts.com) for more details