



Performance Charge Pipe Kit (Hot and Cold Side) Part Number: 17-105

**2003-2007 Ford F-250 Super Duty 6.0L Powerstroke
2003-2007 Ford F-350 Super Duty 6.0L Powerstroke
2003-2007 Ford F-450 Super Duty 6.0L Powerstroke
2003-2007 Ford F-550 Super Duty 6.0L Powerstroke
(Single Alternator vehicles ONLY)**

Installation Instructions

For technical inquiries please email us at tech@hpsperformance.com

In the email, please include the following information for faster response:

- Year / Make / Model / Engine of your vehicle.
- If it is a fitment issue, please include pictures showing the fitment problem.
- If there are missing parts, please list the part number(s) from the bill of materials on the 2nd page.
- Optional but recommended – Your contact phone number and preferred call back time.

You can also give us a call via 626-747-9200 for tech support Monday-Friday, 9:00am-5:00pm Pacific Time.

Bill of Materials

Kit Number: 17-105

Line #	Description	Part Number	Qty
1	Hot Side Charge Pipe	529-225	1
2	Cold Side Charge Pipe	529-226	1
3	Hot Pipe Support Bracket	530-392	1
4	M6 Flange Nut	HW-N6	1
5	M6 Flat Washer 16mm OD	HW-FW6L	1
6	Rubber Vibration Mount M6 3/4" Tall, Male to Female	HW-RM6-75-MF	1
7	M6 Bolt 12mm Long	HW-B6-12	1
8	CAC Inlet Boot	ORCH-HOT-101	1
9	Turbo Outlet Boot	ORCH-HOT-102	1
10	CAC Outlet Boot	ORCH-HOT-710	1
11	Intake Manifold Inlet Boot	ORCH-HOT-711	1
12	Spring Loaded T-Bolt Clamp for 3.00" Hose	SLTC-325	5
13	Spring Loaded T-Bolt Clamp for 2.50" Hose	SLTC-275	2
14	Spring Loaded T-Bolt Clamp for 3.25" Hose	SLTC-350	1

- **Before installing any parts of this charge pipe kit, please read the instructions thoroughly.**
- **Verify the contents of this charge pipe kit before disassembling your vehicle.**
- **DO NOT INSTALL IF ANY PARTS ARE MISSING OR DAMAGED. CONTACT tech@hpsperformance.com IMMEDIATELY. WE ARE NOT RESPONSIBLE FOR ANY DAMAGE CAUSED DUE TO IMPROPER INSTALLATION.**
- **Installation requires moderate mechanical skills. A qualified mechanic is highly recommended.**
- **Do not attempt to install the charge pipe kit while the engine is hot.**
- **This installation may require removal of coolant lines that may be hot.**
- **For technical inquiries, please email us at tech@hpsperformance.com**

PLEASE READ CAREFULLY BEFORE INSTALLATION!

This installation is not for the novice customer. Install this product with EXTREME caution! Misuse of this product can destroy your engine! If you are not mechanically inclined, please have a professional automotive mechanic install this kit.

NOTE: HPS holds no responsibility for any engine damage that results from misuse of this product.

GETTING STARTED

1. Turn the ignition OFF and disconnect both of the vehicle's battery's negative cables . If the engine has run within the past two hours let it cool down.

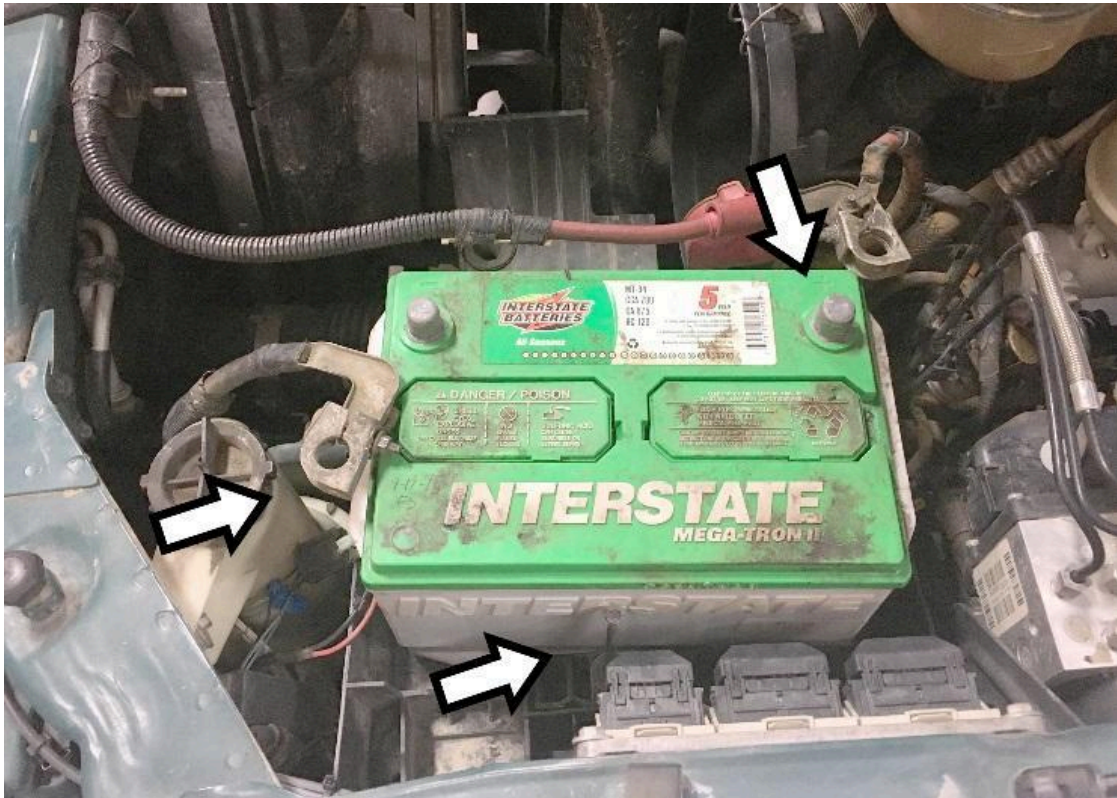
NOTE: Disconnecting the negative battery cable erases pre-programmed electronic memories. Write down all memory settings before disconnecting the negative battery cable. Some radios will require an anti-theft code to be entered after the battery is reconnected. The anti-theft code is typically supplied with your owner's manual. In the event your vehicle's anti-theft code cannot be recovered, contact an authorized dealership to obtain your vehicle's anti-theft code. We also highly recommend NOT discarding any stock parts after the installation.



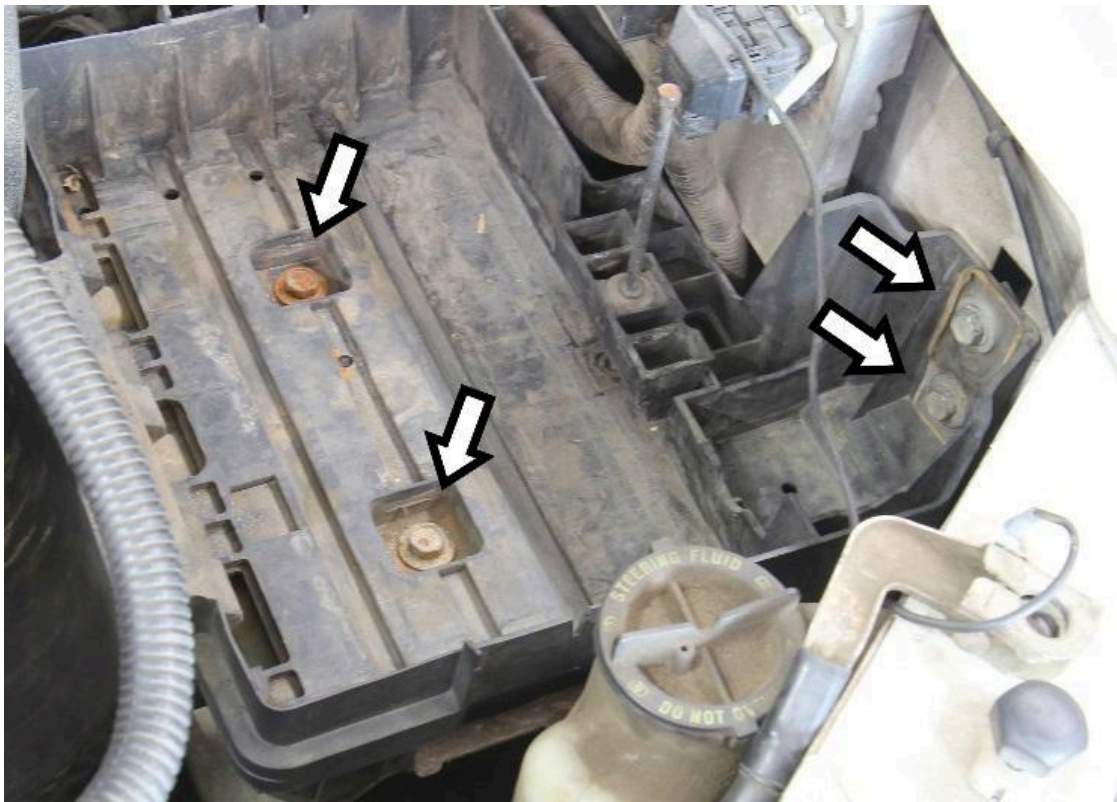
2. Unbuckle and remove the factory air filter housing.



3. Remove the air duct located towards the front of the vehicle.



4. Disconnect both battery cables. Loosen and remove the battery hold down bracket using a 8mm socket. Remove the battery from the engine bay.



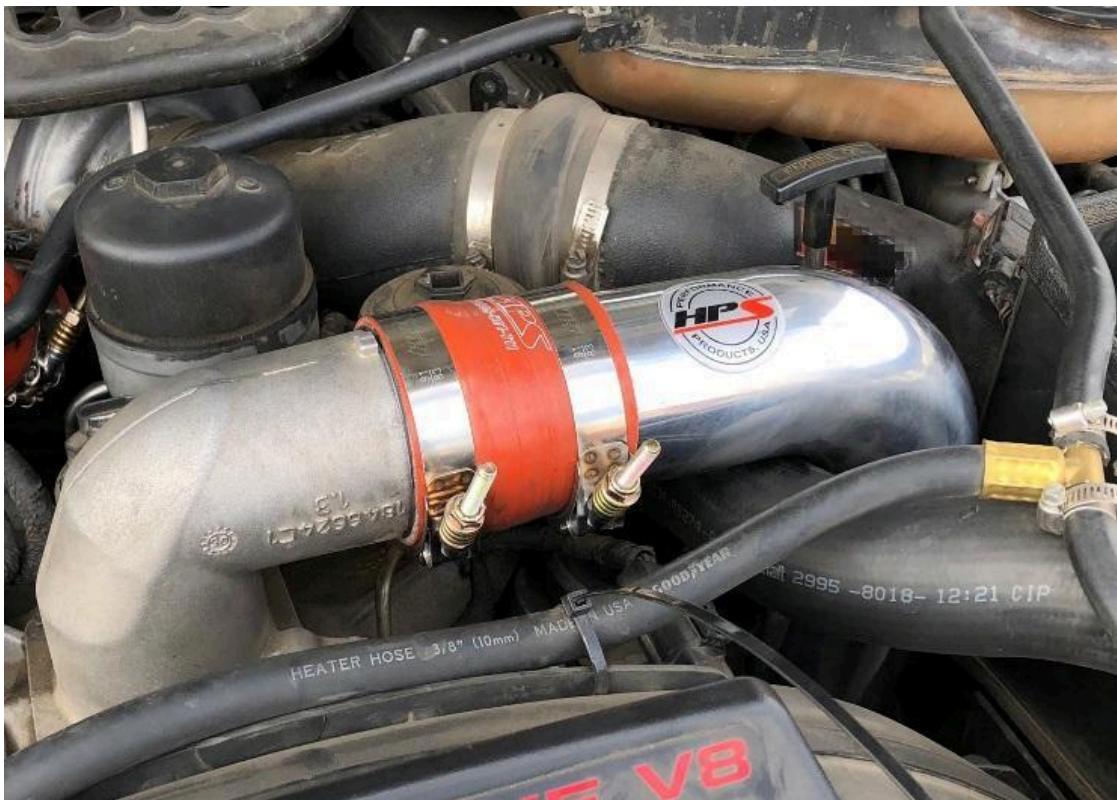
5. Use a 13mm socket to remove the bolts on the battery tray. Remove the battery tray from the engine bay.



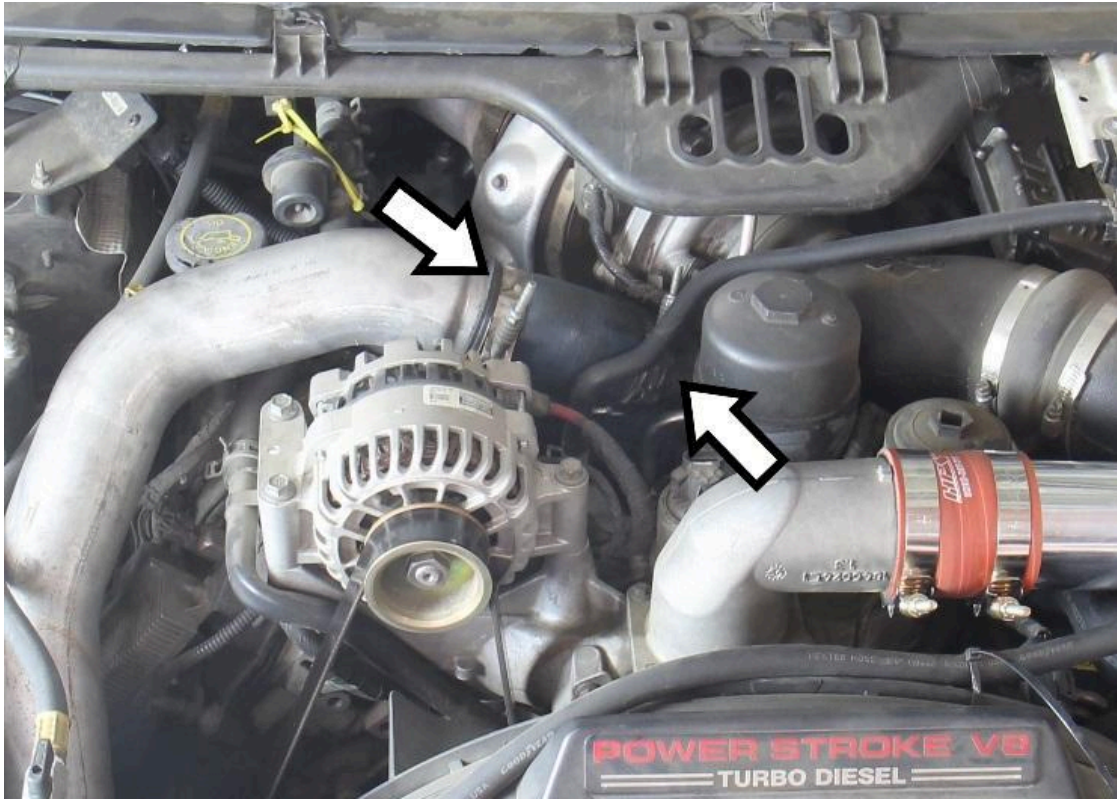
6. Loosen the clamps on the factory driver side charge pipe. Once loosened, you may remove the pipe from the engine bay.



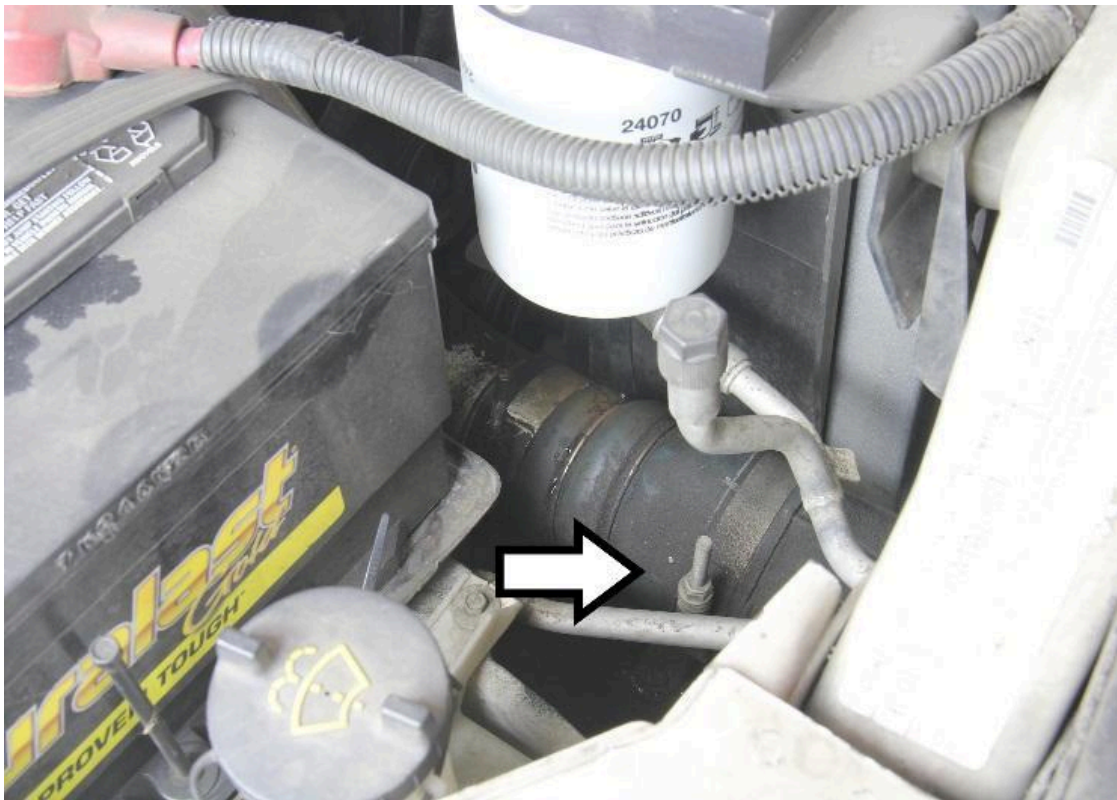
7. Install hose "ORCH-HOT-710" onto the driver side charge outlet with the supplied clamps. Once the charge outlet side clamp is tightened, loosely fit the charge pipe into the hose. Do not tighten the second clamp at this time.



8. Install hose "ORCH-HOT-711" onto the intake manifold inlet and connect the charge pipe onto it. Be sure to install the longer side of the hose onto the intake manifold inlet and the shorter side onto the charge pipe.



9. Loosen the hose on the turbocharger outlet.



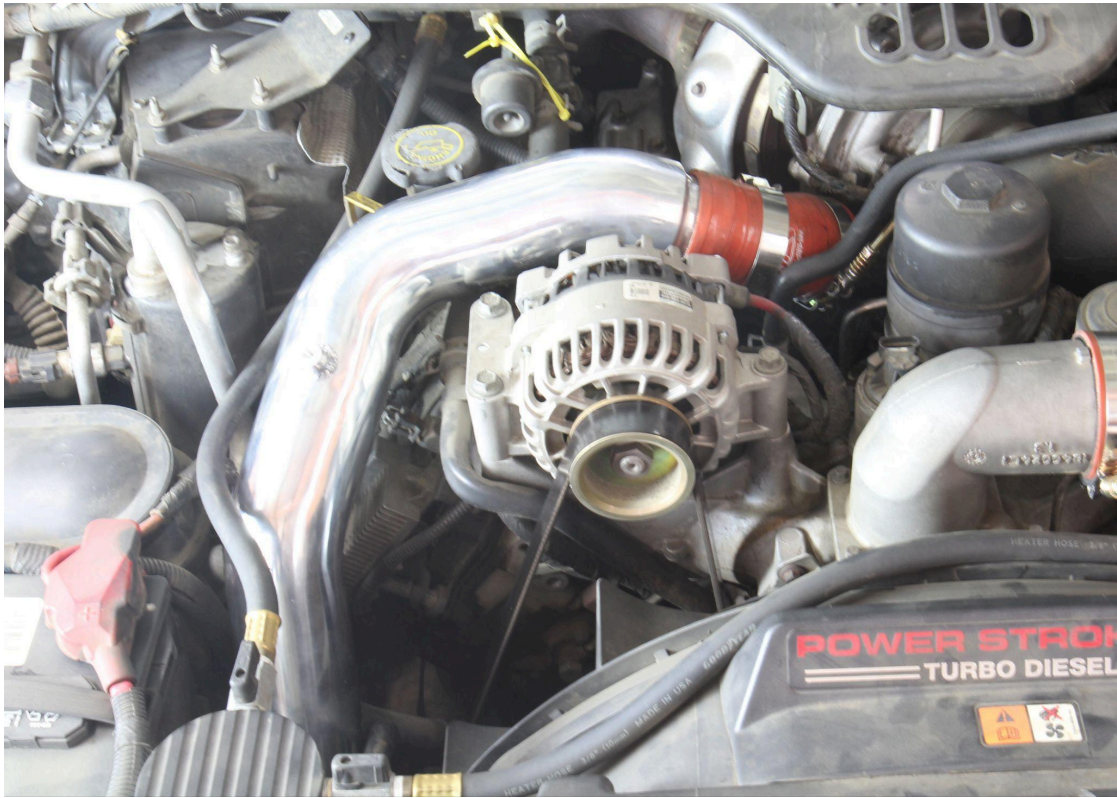
10. Loosen the hose on the passenger side of the charge pipe, then remove the factory charge pipe from the engine bay.



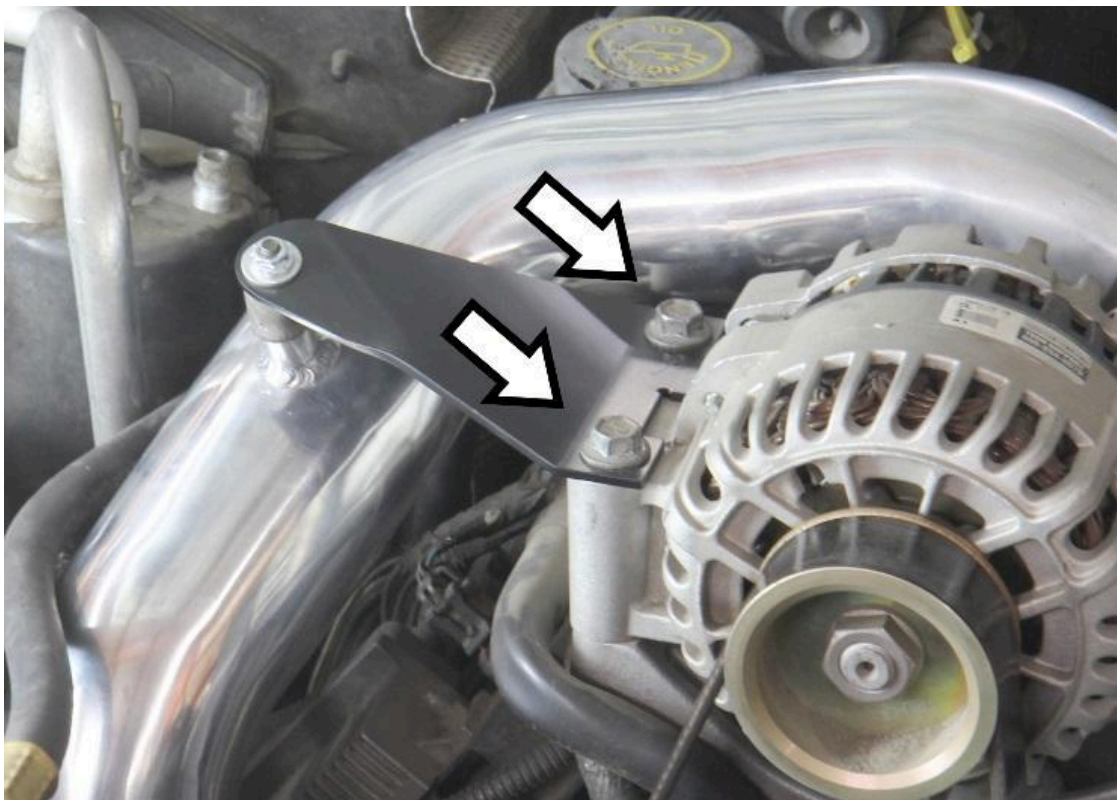
11. Insert hose "ORCH-HOT-102" onto the turbocharge outlet. Loosely place the small spring loaded T-bolt clamps onto the hose.



12. Install hose "ORCH-HOT-101" along with the provided spring loaded T-bolt clamps onto the passenger side charge inlet.



13. Install the charge pipe as shown. Do not clamp down at this time as further adjustment is needed.



14. Loosen and remove the two bolts indicated in the image and install the hot side pipe support bracket. Torque the bolts down to 35 lb-ft.



15. Install the rubber vibration mount onto the mounting bung on the charge pipe, then secure the mount to the hot pipe support bracket using the included nut and washer.



16. Tighten all of the clamps to 35 in-lb. to secure the pipes and hoses in place.

FINAL STEPS

Once the charge pipes have been positioned, tighten all of the clamps and secure all of the parts.

Reinstall the battery tray and intake system.

Upon completion of the installation, reconnect the negative battery terminal before you start the engine. Double check to make sure everything is tight and properly positioned before starting the vehicle.

Start the engine. Let the car idle for 3 minutes. Perform a final inspection before driving. Listen carefully for any odd noises, rattles and/or air leaks prior to taking it for a test drive. If any problems arise go back and check the vacuum lines, hoses and clamps that may be causing leaks or rattles and correct the problem.

Periodically, recheck the alignment of the charge pipes and make sure there is proper clearance around and along the length of the pipes. Failure to follow proper maintenance procedures may cause damage to the charge pipes and will void the warranty.

Also available for
2003-2007 Ford F-250 / F-350 / F-450 / F-550
Super Duty 6.0L Powerstroke Diesel



HPS Silicone Radiator Coolant Hose klt
Part Number [57-1214](#)



HPS Silicone Heater Coolant Hose Kit
Part Number [57-2120](#)



HPS Silicone Coolant Tank Supply Hose Kit
Part Number [57-2119](#)

**Contact an authorized HPS Performance dealer or
visit us at hpsperformance.com for more details**