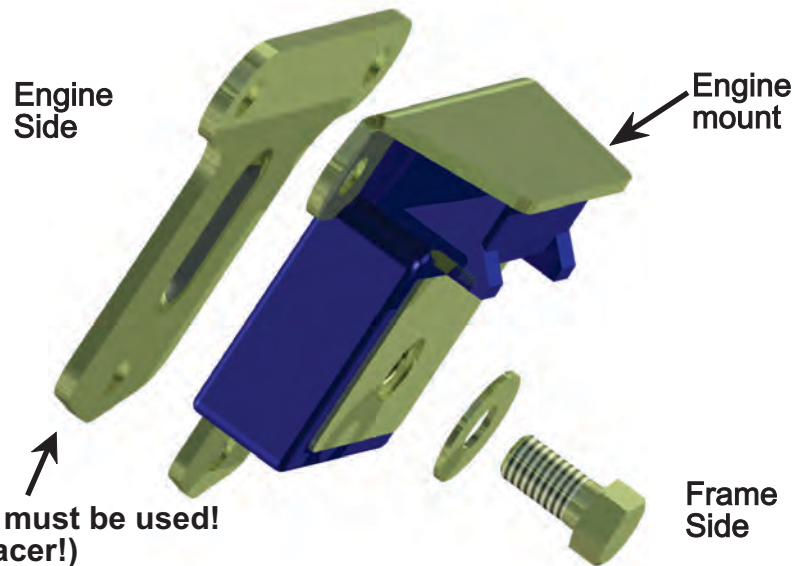


Instruction Sheet

Set #3.1156 Gold Zinc Plated



1131 VIA CALLEJON, SAN CLEMENTE, CA 92673



Note: ENERGY SUSPENSION only supplies the single 7/16"-14 x .75" Length bolt and washer securing the mount to the frame. Different applications may require a longer bolt. You must reuse all bolts securing the mount to the engine block.

A. The preload plate must be installed with the protrusion facing the engine block.

ENERGY SUSPENSION recommends replacing both right and left side engine mounts at the same time.

Note: Due to the many variations and styles of aftermarket headers, you may need to fabricate a heat shield or use header wrap to keep excessive heat from your new engine mounts.

ENGINE MOUNT REMOVAL

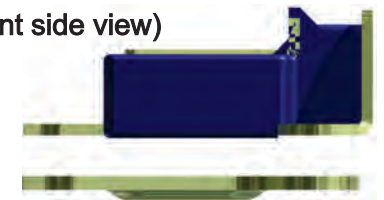
1. Disconnect battery for safety.
2. Support engine with jack under suitable location or under oil pan with wood block.
3. Remove bolts and nuts securing mounts to frame bracket.
4. Raise engine slightly with jack. (Clearances between fan and shroud are tight, use caution when jacking.)
5. Remove bolts or nuts attaching mounts to block.

ENGINE MOUNT INSTALLATION

(Note: Due to unknown variation in aftermarket and factory engine mount bracket thickness, you must **check bolt thread length.**)

1. Position mount to block and install attaching hardware.
2. Lower engine into position and install bolt through frame brackets.
3. Remove jack.
4. Torque all nuts and bolts to factory specifications.
5. Check fan and shroud for proper clearances.

(Engine mount side view)



© 2013 Energy Suspension. All rights reserved.
May not be reproduced, in any form, or by any means,
without the written consent of Energy Suspension.

17P17617

09/20/2013 BEL
ECN# 13061 Rev. A