

# Installation Instructions

## For set # 5.1106 Chrysler V8 Motor Mount Inserts



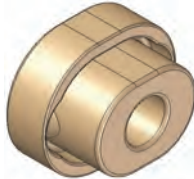
1131 VIA CALLEJON, SAN CLEMENTE, CA 92673

© 2011 Energy Suspension. All rights reserved.  
May not be reproduced, in any form, or by any means,  
without the written consent of Energy Suspension.

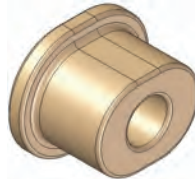
It is recommended that if you are unfamiliar with this type of work that you refer to a qualified service center specializing in this type of work. It is also recommended that if you choose to do this work yourself that a factory service manual be obtained for the proper procedures pertaining to removal, replacement and proper torque specifications for your vehicle. This instruction sheet is intended as a guideline for the safe installation of Energy Suspension's polyurethane bushings, once you have removed the factory suspension components from your vehicle. Wheel alignment is almost always disturbed when suspension components are removed or replaced. It is recommended that you have the alignment checked on your vehicle at a qualified alignment shop.

### Parts list:

- 1 ea 1142
- 2 ea 1143
- 1 ea 1151
- 2 ea 15.10.465.39



1142



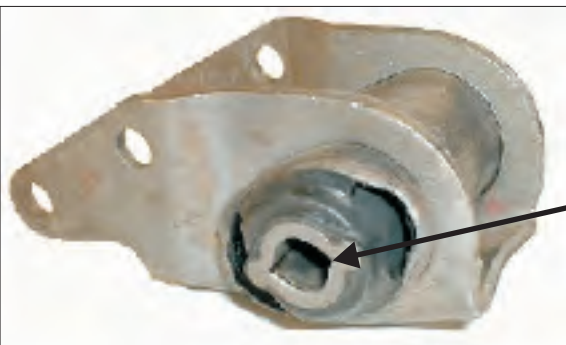
1143



1151

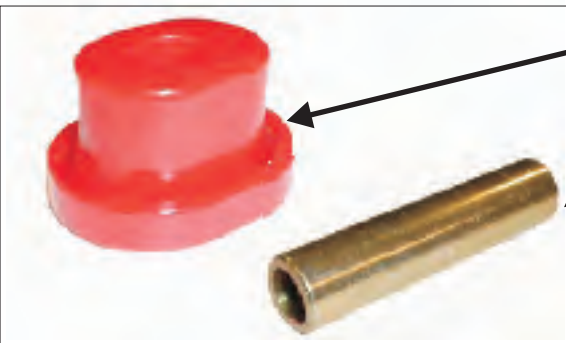


15.10.465.39



### STEP 1

Remove rubber and metal sleeve from factory metal shell.



Polyurethane engine mount insert

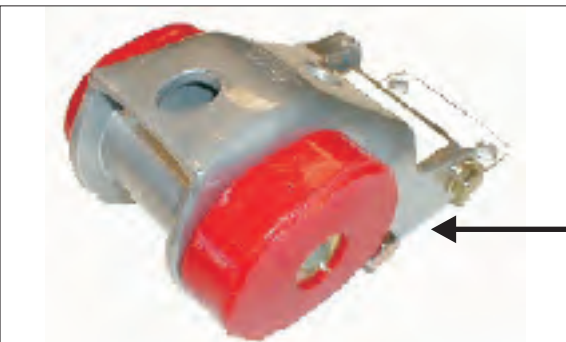
Inner metal sleeve

### STEP 2

Install polyurethane engine mount inserts as follows:

Front Mount = 1143 Left, 1143 Right

Rear Mount = 1142 Left, 1151 Right



### STEP 3

Reinstall completed engine mount assembly, tighten all bolts to factory specifications.

17351

19/OCT/11 MAM