

Installation Instructions

Eibach Inc. 264 Mariah Circle Corona, CA 92879
USA Tech Support 800-507-2338 ext. 114



E85-209-028-01-22

2022+ Polaris RZR Pro R 4 Sport

Notes

All measurements are taken using a stock 32" tire. Changes in tire size or weight on vehicle will change ride height and should be accounted for.

Kit Contents

Description	Part Number	Quantity
Front Tender Spring	1000.375.0250S	2
Front Main Spring	1200.375.0300S	2
Rear Tender Spring	1200.375.0150S	2
Rear Main Spring	1800.375.0350S	2

Installation Notes

Read all instructions before beginning installation

- Only qualified mechanics experienced in the installation and removal of suspension components should perform this installation.
- Use of a hoist and screw jack is highly recommended and will substantially reduce installation time.
- Never work on or under a vehicle unless it is properly supported by safety stands and wheels are blocked.
- Never use impact wrenches or impact guns to install or remove shock absorber piston components, shafts and Piston rod nuts.
- All Eibach springs should be installed with the Eibach logo right-side-up.
- After Installation, inspect and adjust the following: Wheel Alignment; tire/wheel fender clearance when using aftermarket wheels or tires; brake line clearance and attachments; anti-lock-brake system sensors.

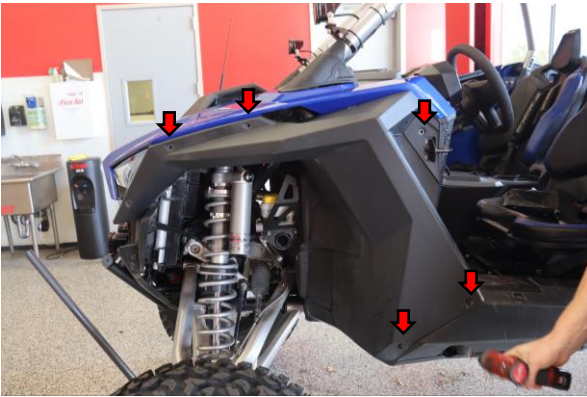
FRONT INSTALLATION



Begin by jacking up the front of the vehicle.



Remove the torx screws for the speaker grill



Remove all of the torx screws and clips on the fender.



Remove the fender.



Remove the torx screws with securing the upper hood scoop

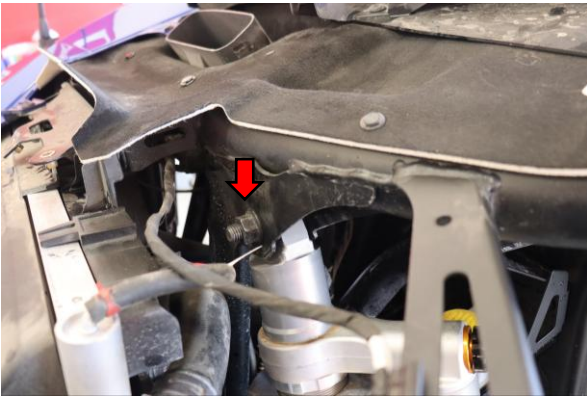


Remove the torx screw securing the front hood fascia. Push it toward the front of the car to release. For vehicles equipped with front camera unplug the harness.

FRONT INSTALLATION



Remove the torx screws and clips securing the side hood fascia.



With everything removed and the car jacked up with the front wheels off the ground. Remove the upper and lower shock bolts.



Pull the shock up through the top. It may help to twist the shock body first to align the reservoir with the opening.



Compress the springs and remove the lower spring perch.

FRONT INSTALLATION



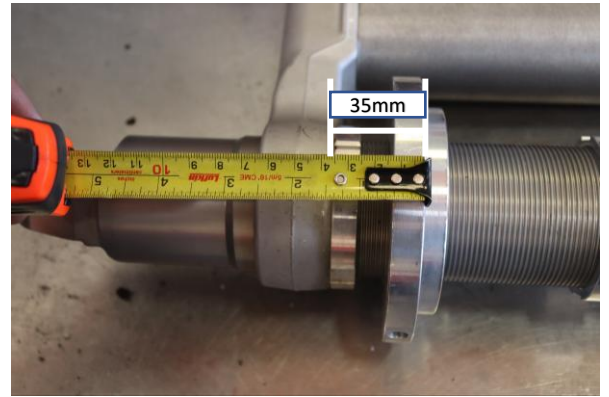
Remove the OE main spring.



Remove the stock slider.



Remove the OE front tender spring.



Set the preload collar to 35mm (1 3/8") from the bottom of the Resi crossover to the bottom of the preload collar



Set the crossover ring to 85mm (3 11/32") from the spring seat to the bottom of the crossover ring.



Install the Eibach Front Tender.

FRONT INSTALLATION



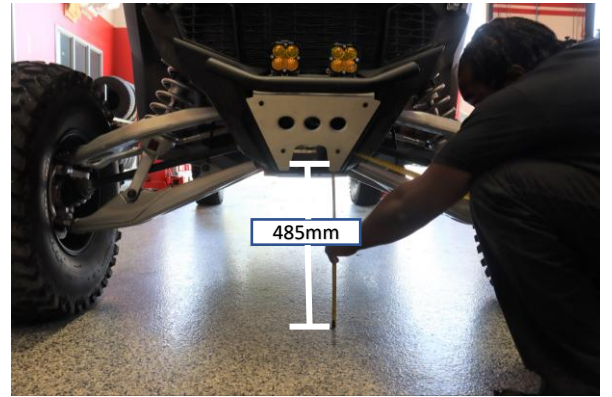
Install the OE 2-piece slider.



Install the Eibach main spring and the OE lower spring perch. Make sure the perch is lined up with the boss on the clevis.



Repeat on the opposite side and reinstall everything the reverse order of removal.



The front height should measure about 485mm (19 3/32") from the ground to the lower control arm bolt with no extra weight on the vehicle.

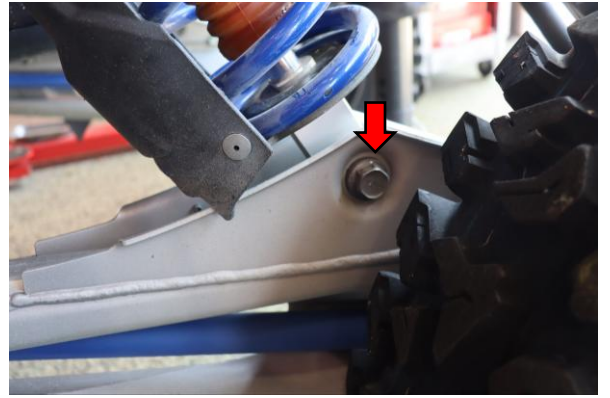


Set the adjuster to 7 clicks clockwise from the full open (soft) position.

REAR INSTALLATION



Jack up the rear of the car so the wheels are off the ground. Loosen and remove the upper shock bolt.



Loosen and remove the lower shock bolt



Remove the shock.



Compress the springs and remove the lower spring perch with the guard attached.



Remove the OE rear main spring.

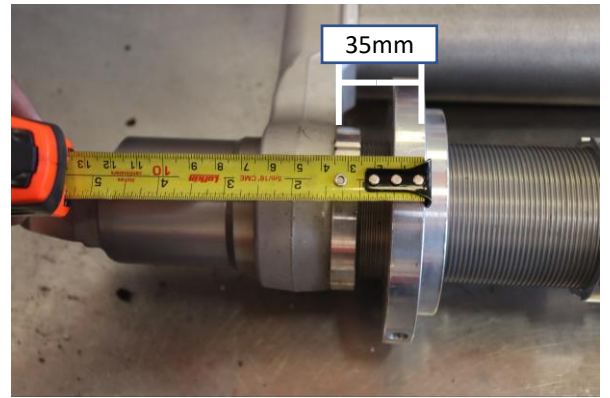


Remove the OE slider.

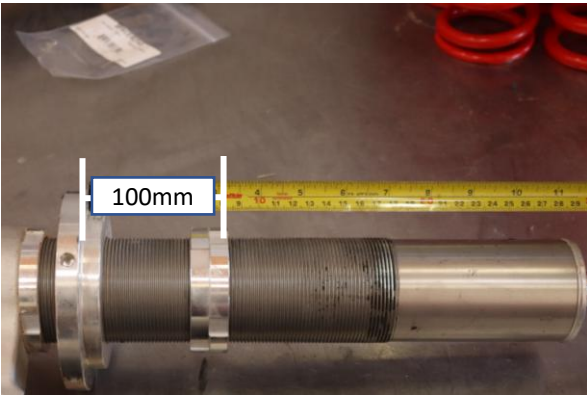
REAR INSTALLATION



Remove the OE rear tender spring.



Set the preload collar to 35mm (1 3/8") from the bottom of the Resi crossover to the bottom of the preload collar



Set the crossover ring to 100mm (3 59/64") from the spring seat to the bottom of the crossover ring.



Install the Eibach rear tender spring.

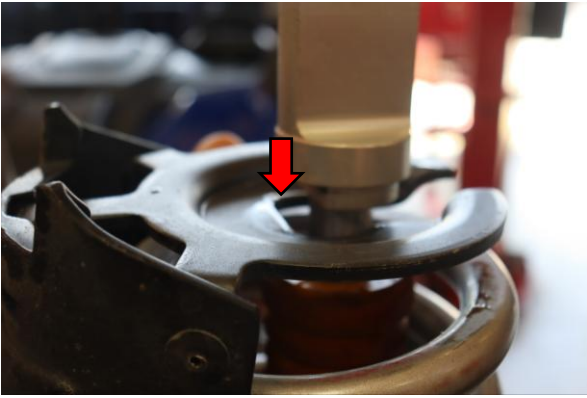


Install the OE slider.



Install the Eibach rear main spring and compress the springs.

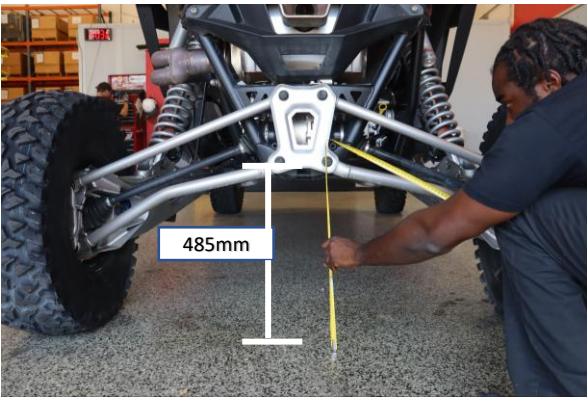
REAR INSTALLATION



Install the OE lower spring perch and be sure to align the boss on the rod end.



Reinstall the shock and repeat on the other side.



The rear ride height should be about 485mm (19 3/32") to the lower control arm bolt with no extra weight on the vehicle.



Set the rear adjuster 3 clicks clockwise from the full open (soft) position.