

# Installation Instructions

Eibach Inc. 264 Mariah Circle Corona, CA 92879  
USA Tech Support 800-507-2338 ext. 114



## E85-209-032-04-22

2022+ Polaris RZR Pro R 4 Ultimate

OE Fox Dynamix Electronic shocks

### Notes

STAGE 4 (EXTRA LOAD 300 LBS)

All measurements are taken using a stock 32" tire. Changes in tire size or weight on vehicle will change ride height and should be accounted for.

### Kit Contents

Description	Part Number	Quantity
Front Tender Spring	1000.375.0350S	2
Front Main Spring	1200.375.0350S	2
Rear Tender Spring	1200.375.0300S	2
Rear Main Spring	1800.375.0400S	2

### Installation Notes

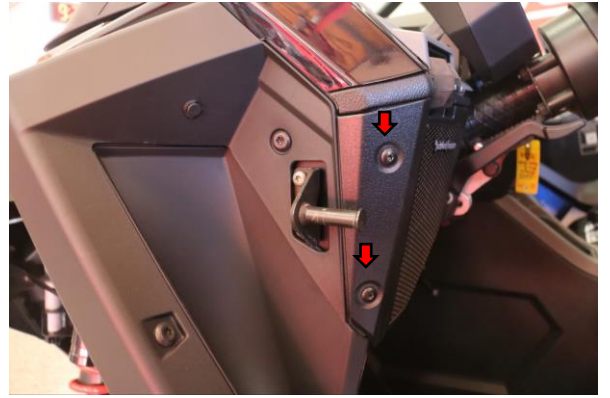
#### Read all instructions before beginning installation

- Only qualified mechanics experienced in the installation and removal of suspension components should perform this installation.
- Use of a hoist and screw jack is highly recommended and will substantially reduce installation time.
- Never work on or under a vehicle unless it is properly supported by safety stands and wheels are blocked.
- Never use impact wrenches or impact guns to install or remove shock absorber piston components, shafts and Piston rod nuts.
- All Eibach springs should be installed with the Eibach logo right-side-up.
- After Installation, inspect and adjust the following: Wheel Alignment; tire/wheel fender clearance when using aftermarket wheels or tires; brake line clearance and attachments; anti-lock-brake system sensors.

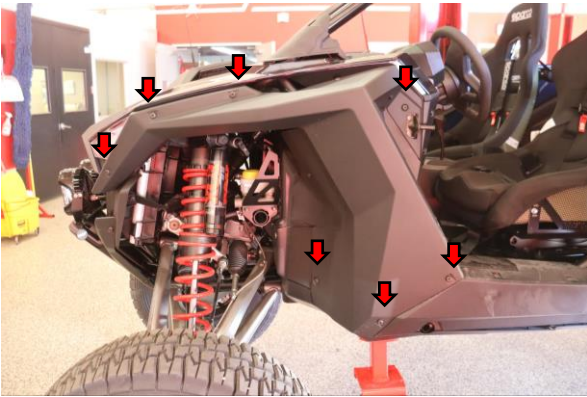
# FRONT INSTALLATION



Step 1. Begin by jacking up the front of the vehicle.



Step 2. Remove the torx screws for the speaker grill



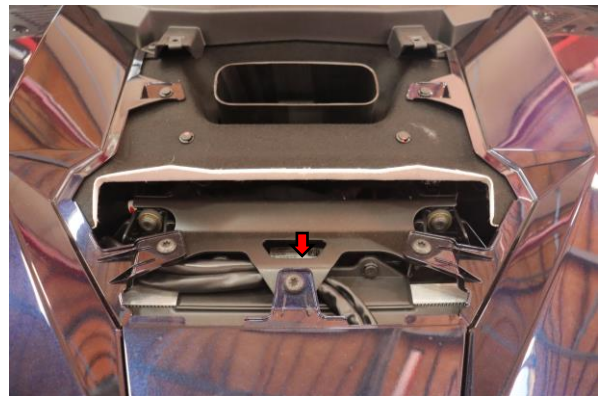
Step 3. Remove all of the torx screws and clips on the fender.



Step 4. Remove the fender.

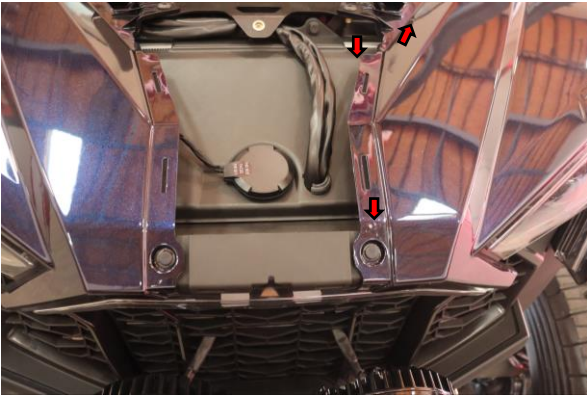


Step 5. Remove the torx screws with securing the upper hood scoop



Step 6. Remove the torx screw securing the front hood fascia. Push it toward the front of the car to release. For vehicles equipped with front camera unplug the harness.

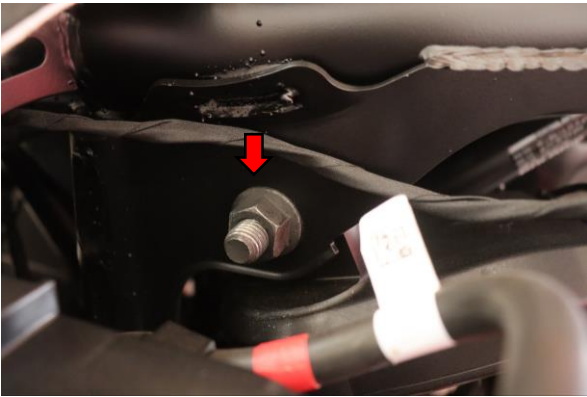
## FRONT INSTALLATION



Step 7. Remove the torx screws and clips securing the side hood fascia. On the passenger side the antenna will need to be removed as well.



Step 8. remove upper fender from car



Step 9. With everything removed and the car jacked up with the front wheels off the ground. Remove the upper and lower shock bolts and disconnect the electrical connectors for the Live Valve.



Step 10. Remove lower shock mounting bolt.



Step 11. Pull the shock up through the top. It may help to twist the shock body first to align the reservoir with the opening.



Step 12. Compress the springs and remove the lower spring perch.

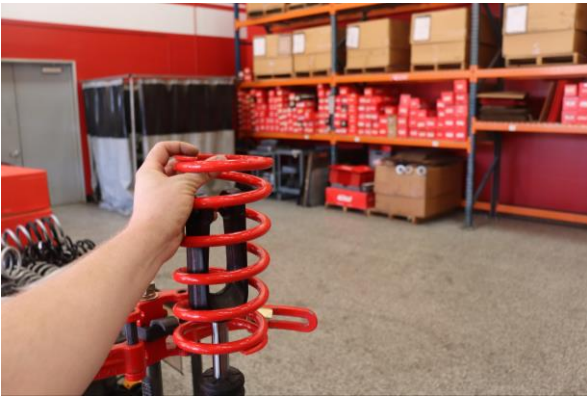
# FRONT INSTALLATION



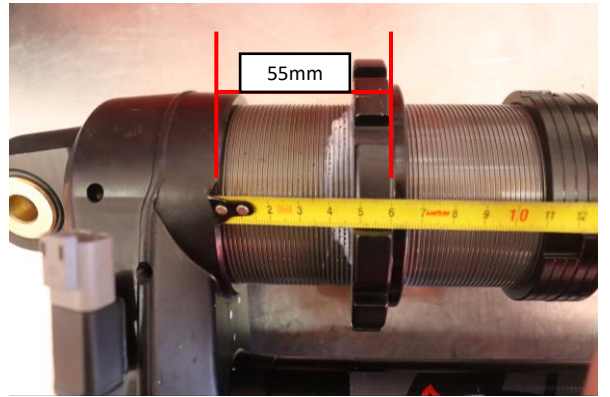
Step 13. Remove the OE main spring.



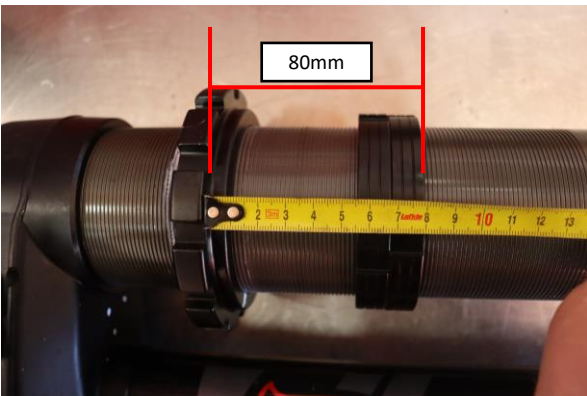
Step 14. Remove the oe slider.



Step 15. Remove the OE front tender spring.



Step 16. Set the preload collar to 55mm ( 2 11/64 IN) from the bottom of the Resi crossover to the bottom of the preload collar

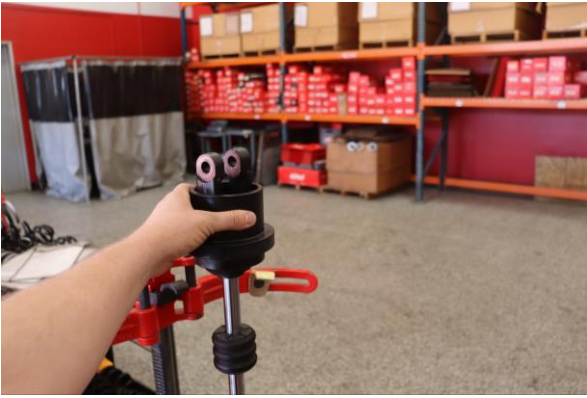


Step 17. Set the crossover ring to 80mm (3 9/64 IN) from the spring seat to the bottom of the crossover ring.

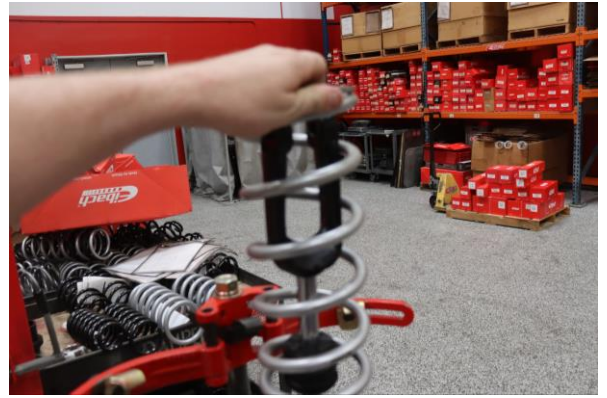


Step 18. Install the Eibach Front Tender.

## FRONT INSTALLATION



Step 19. Install the OE fox slider.



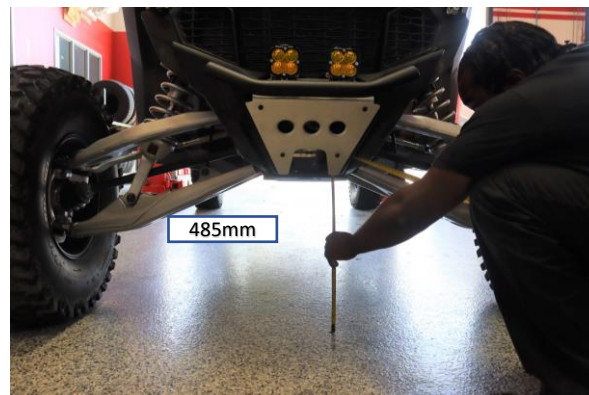
Step 20. Install the Eibach main spring.



Step 20. Install the OE spring perch and ensure the boss on the clevis is aligned with the opening on the perch.



Step 21. Repeat on the opposite side and reinstall everything the reverse order of removal.

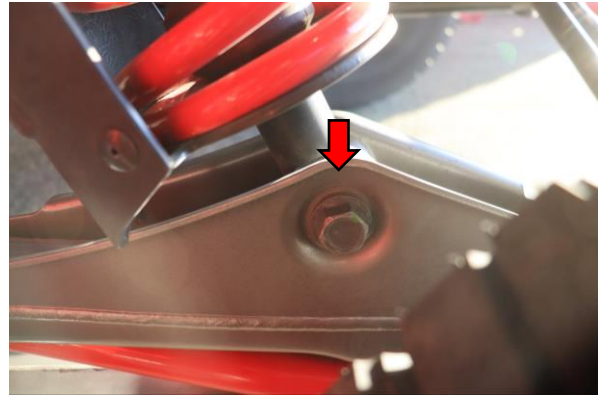


Step 22. Measure from the ground to the center of the front lower control arm bolt. The recommended preload measurement in **Step 16** will get the vehicle close to the recommended ride height but each vehicle may vary some. As reference, skid plate measurement at recommended preload should be 406.4mm (16in.). We recommend setting the ride height at 485mm (19 3/32in.) measuring from the ground to the center of the lower control arm bolt. **Note: If you have larger than stock wheels and tires, the ride height will be increased.**

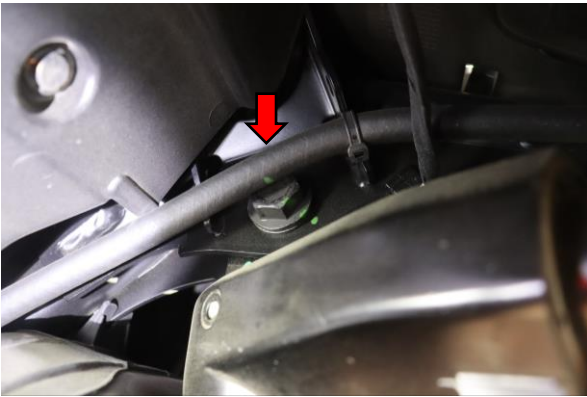
## REAR INSTALLATION



Step 23. Jack up the rear of the car so the wheels are off the ground. Loosen and remove the upper shock bolt.



Step 24. Loosen and remove the lower shock bolt.



Step 25. Remove the upper shock bolt.



Step 26. Disconnect the both electrical connectors for the Live Valve.

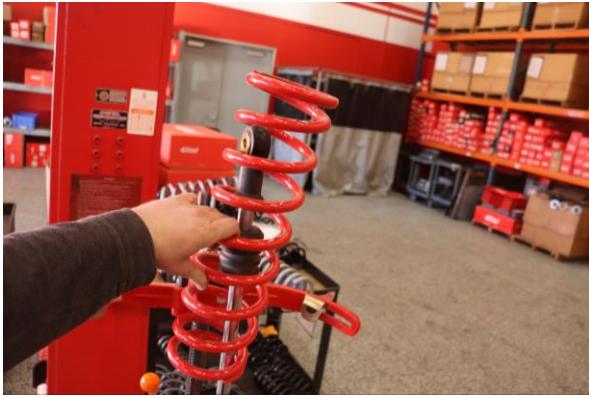


Step 27. Remove the rear shock.



Step 28. Compress the springs and remove the OE spring seat.

# REAR INSTALLATION



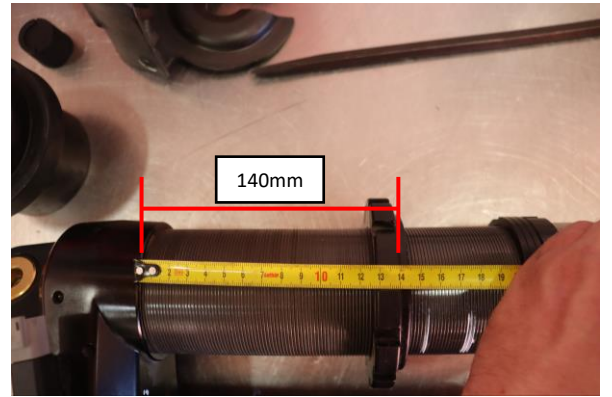
Step 29. Remove the OE rear main spring.



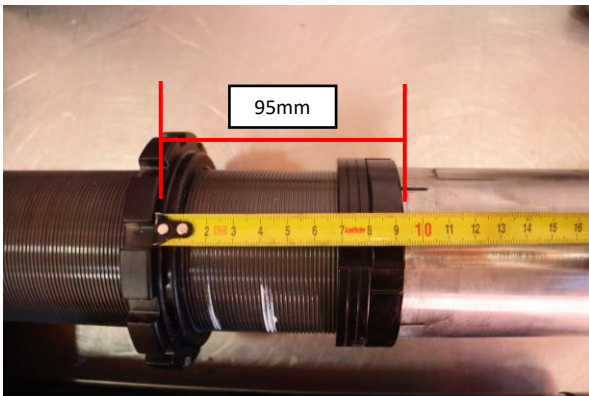
Step 30. Remove the OE slider.



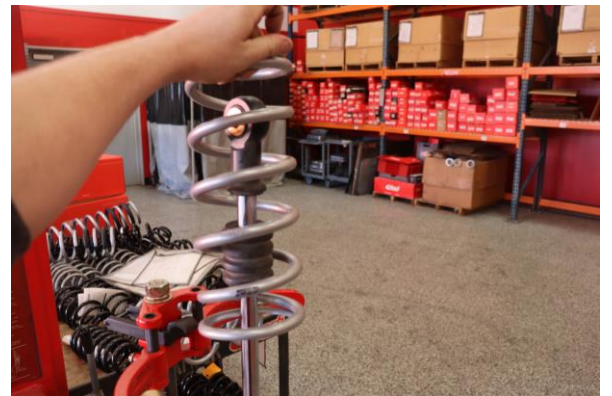
Step 31. Remove the OE rear tender spring.



Step 32. Set the preload collar to 140mm (5 33/64 IN) from the resi crossover bridge to the spring seat on the preload collar.

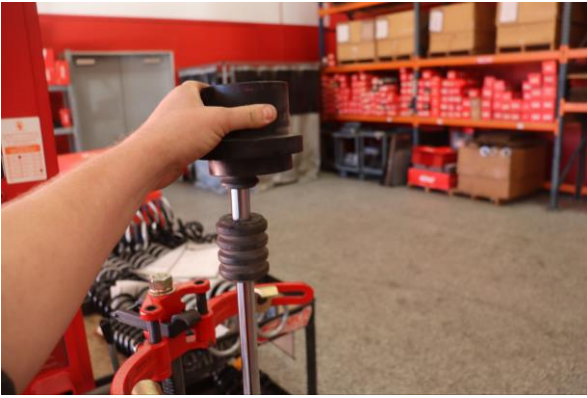


Step 33. Set the crossover ring to 95mm (3 47/64 IN) from the spring seat on the preload collar to the bottom of the cross over rings.

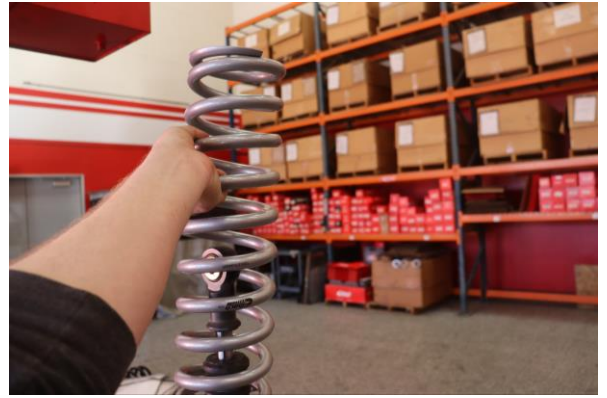


Step 34. Install the Eibach tender spring.

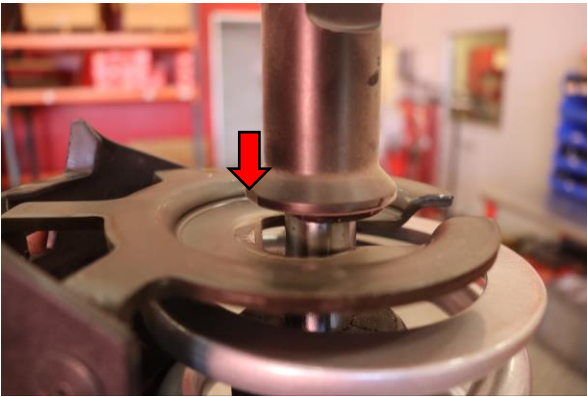
## REAR INSTALLATION



Step 35. Reinstall the OE slider.



Step 36. Install the Eibach main spring.



Step 37. Install the OE lower spring perch and be sure to align the boss on the rod end.



Step 38. Reinstall the shock. Reconnect the electrical connectors and top and bottom bolts and repeat on the opposite side.



Step 39. Measure from the ground to the center of the lower radius arm bolt. The recommended preload measurement in **Step 32** will get the vehicle close to the recommended ride height but each vehicle may vary some. As reference, skid plate measurement at recommended preload should be **406.4mm (16in.)**. We recommend setting the ride height at **485mm (19 3/32in.)** measuring from the ground to the center of the lower radius arm bolt. **Note: If you have larger than stock wheels and tires, the ride height will be increased. Due to the sensitivity of weight of these vehicles, weight distribution may change ride heights, additional pre-load may need to be added to compensate.**