

INSTALLATION MANUAL

70145

Level of Difficulty

Moderate

Installation difficulty levels are based on time and effort involved and may vary depending on the installer level of expertise, condition of the vehicle and proper tools and equipment.

Installed Attachment Tabs

Height	19.5"
Width	18"

Parts List

Item	Qty	Description
1	1	Tow bar base plate
2	2	Tow bar mounting tab
3	2	Safety cable, 7,500 lbs.
4	8	Hex bolt, 1/2"
5	8	Serrated-flange nut, 1/2"
6	8	Lock washer, 1/2"
7	2	Caplugs # dop-1375
8	2	Quick link, 1/2"

Tools Required

Torque wrench	Wrench, 7/16"
Ratchet	Wrench, 3/4"
Socket, 7mm	Torx bit, T-15
Socket, 10mm	Torx bit, T-25
Socket, 7/16"	Utility knife / saw
Socket, 3/4"	Safety glasses
Flathead screwdriver	--

⚠ WARNING

Never exceed the vehicle manufacturer's recommended towing capacity.

Product Photo



NOTICE

Visit www.curtmfg.com for a full-color copy of this instruction manual, as well as helpful videos, guides and much more!

Before you begin installation, read all instructions thoroughly.

Proper tools will improve the quality of installation and reduce the time required.

This installation requires:

- Remove recovery loops / D-rings (Permanent)
- Remove bumper (Temporarily)
- Remove skid shield (Temporarily)
- Trimming is required.
- No Fishwiring required.

Periodic inspection of the trailer hitch should be performed to ensure all mounting hardware remains tight and structural components are secure.

To help prevent damage to the product or vehicle, refer to the specified torque specifications when securing hardware during the installation process.

SAFETY INSTRUCTIONS

Safety glasses should be worn at all times while installing this product.

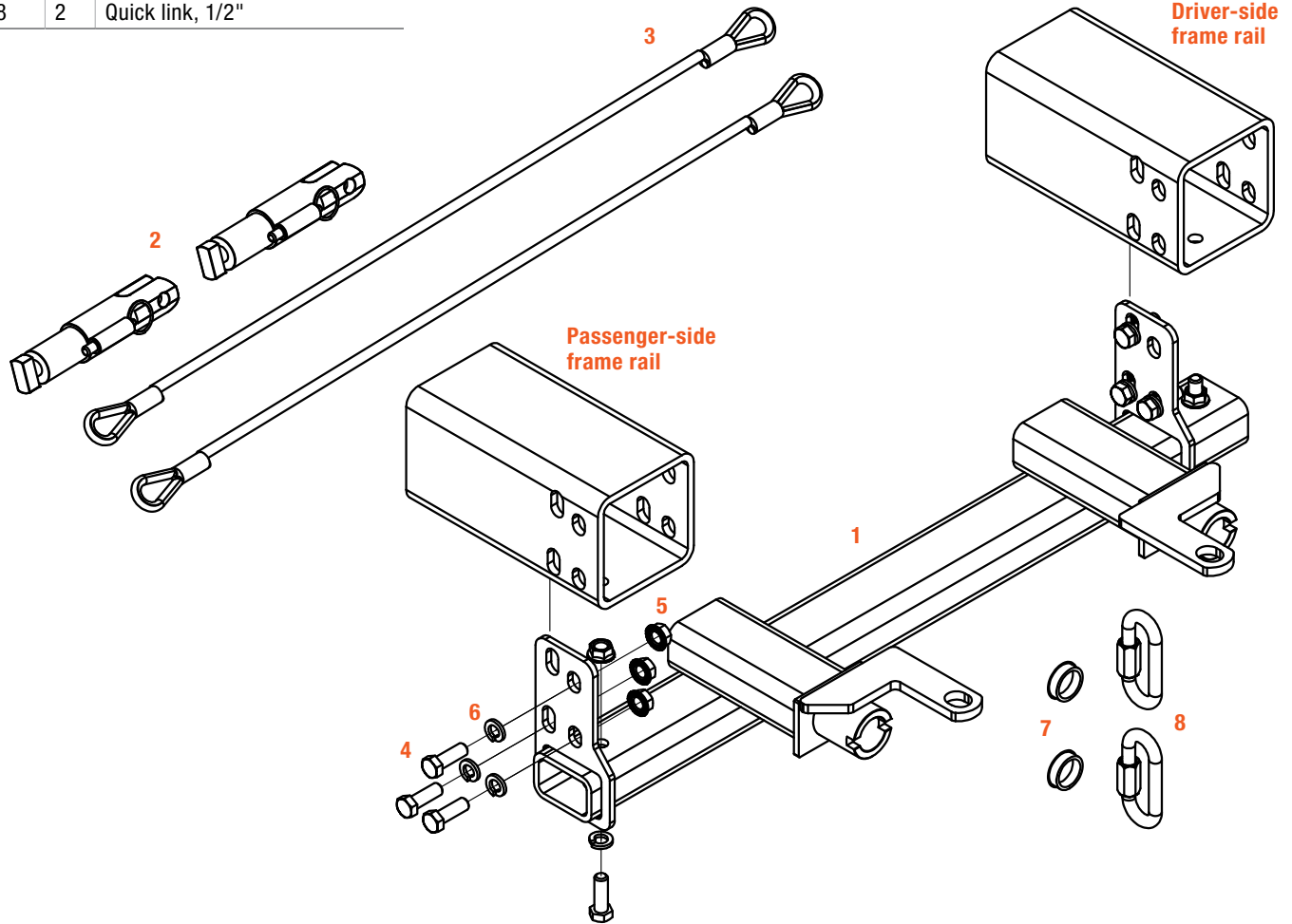
Product Registration and Warranty

CURT stands behind our products with industry-leading warranties. To get copies of the product warranties, register your purchase or provide feedback, visit: warranty.curtgroup.com/surveys

ASSEMBLY

Parts List

Item	Qty	Description
1	1	Tow bar base plate
2	2	Tow bar mounting tab
3	2	Safety cable, 7,500 lbs.
4	8	Hex bolt, 1/2"
5	8	Serrated-flange nut, 1/2"
6	8	Lock washer, 1/2"
7	2	Caplugs # dop-1375
8	2	Quick link, 1/2"



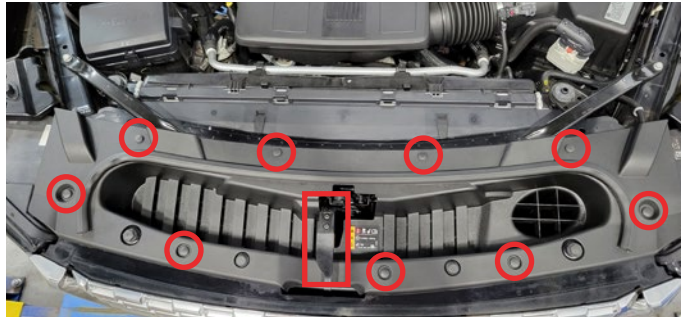
ENGINE BAY / FASCIA REMOVAL

CHEVY TAHOE/SUBURBAN, GMC YUKON/YUKON XL

Step 1

Remove nine total push pins, four on the left and four on the right and one in the center of the fascia.

Remove hood latch before removing plastic radiator cover. Use a T-15 Torx bit to remove the two T-15 screws from the hood latch. Set aside the plastic radiator cover, push pins and hood latch to be reinstalled later.



Step 2

Remove six 10mm bolts with a 10mm socket from the fascia.



Step 3

Use a T-15 Torx to remove five screws from the wheel well liner on both sides of the vehicle.



Step 4

Pull the wheel well liner back carefully to reveal three, 7mm screws. Remove the screws using a 7mm socket.



Step 5

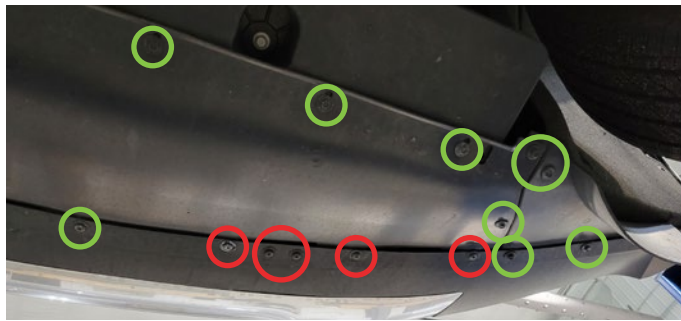
Use a 7mm socket to remove three bolts from the lower belly pan cover on both sides of the vehicle. Using a T-15 Torx bit to remove four screws from the belly pan on both sides.

Use the 7mm socket to remove six additional screws on each side of the vehicle.

Screw totals:

7mm (15 Total)

T-15 Torx (8 Total).



○ T-15 Torx

○ 7 mm

Step 6

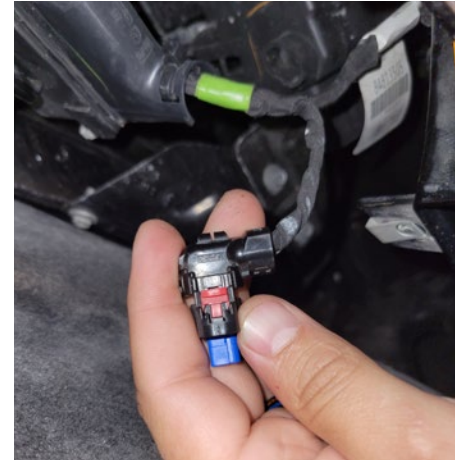
Use a 10mm socket to remove a bolt from both sides of the vehicle.



Step 7

Carefully pry the bumper fascia loose from the passenger-side front end where the three 7mm screws were removed and carefully unplug two electric connections on the passenger side of the vehicle.

Continue to remove the fascia from the vehicle and set aside to be reinstalled later.



Step 8

Chevy Tahoe: Remove two white clips from fascia cover on the back side.

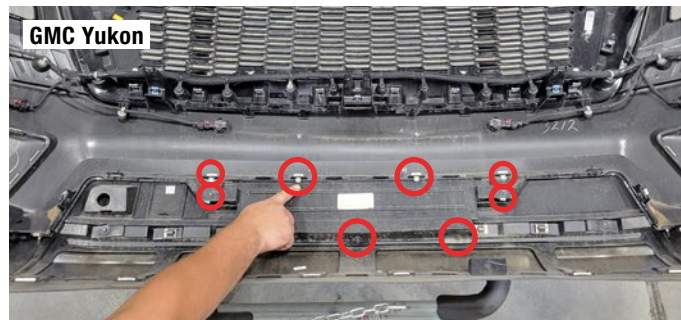
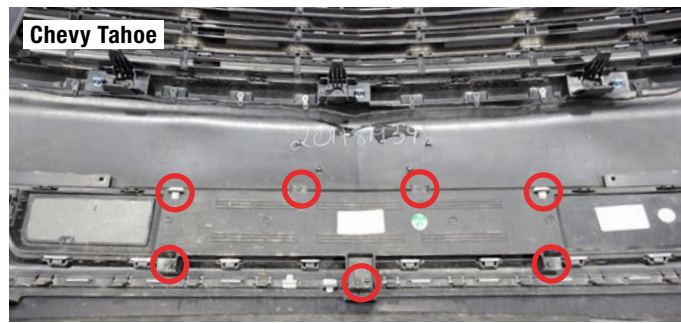
Use a 7mm socket to remove three screws from the fascia cover on the back side.

Use a T-25 Torx bit to remove two screws from the fascia cover on the back side.

GMC Yukon: Remove four white clips from fascia cover on the back side.

Use a 7mm socket to remove five screws from the bottom of the fascia cover on the back side.

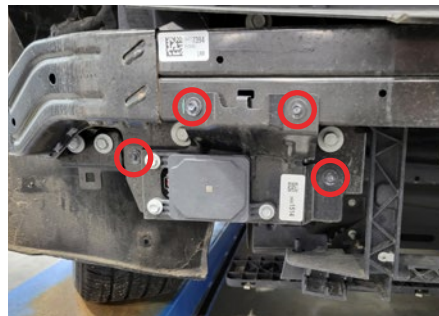
Remove the cover and set aside to return to the vehicle owner. While the base plate is installed, this is not reinstalled. Trim to fit if needed.



Step 9

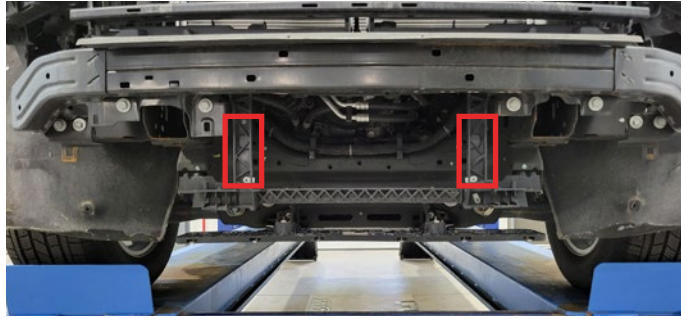
Models with ACC: Use a 7mm socket to remove four mounting bolts from the ACC to allow the ACC to be moved and place out of the way.

Do not unplug ACC sensor as it may cause an error code on the vehicle to be tripped.



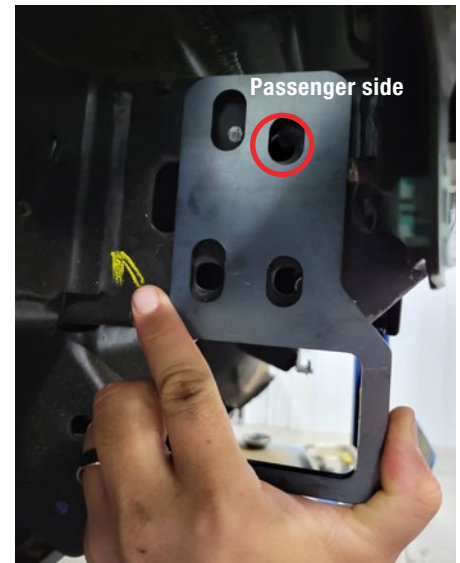
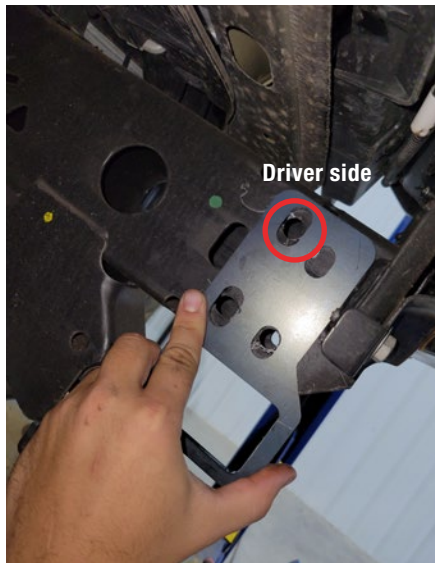
Step 10

Use a saw to cut the two vertical supports marked in the picture. Supports will need to be cut two inches from the top of the mounting bracket and flush with the top of the lower horizontal cross member.



Step 11

Slide base plate into place. Using a 1/2 in supplied bolt on each side, slide bolt into the top existing hole on the inside of the frame on the driver side and outside of the frame on the passenger side of the vehicle.



Step 12

Place the remaining 1/2" bolts in aligning holes and tighten to proper torque spec of 90 ft-lbs.

Step 13

Install the permanent safety cables (#3) and quick links (#8), looping them around the vehicle frame and linking them to the tow bar base plate (#1, #2). There must be one cable on each side of the vehicle. Make sure the cables do not pinch or interfere with any hoses, wiring or other components (see Installing the Permanent Base Plate Safety Cables for additional information).

Step 14

Reinstall the bumper using the proper hardware removed in previous steps.

Step 15

Reinstall the bumper / grille fascia cover and skid plate using previous removal steps. Trim the inner bumper covers/fascia for reinstallation.

TOWING BASICS & SAFETY INFORMATION

For information on safely towing your trailer, visit curtmfg.com/understanding-towing.

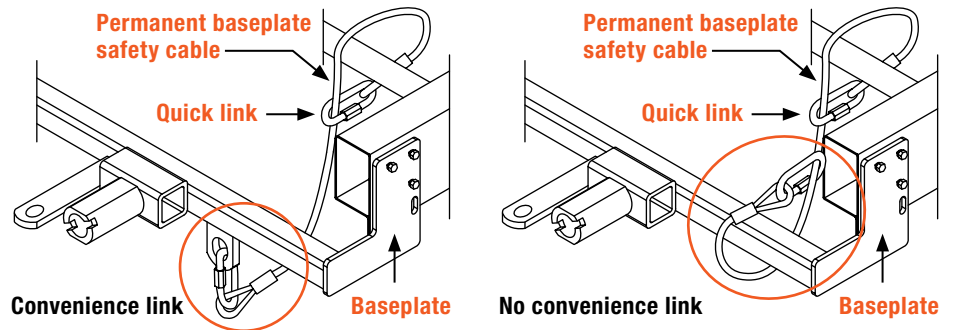
SAFETY CABLE INSTALLATION

Installing the Permanent Base Plate Safety Cables

When dinghy towing a vehicle with a tow bar, base plate safety cables should be used at all times. In the event of a disconnect, the safety cables are designed to help prevent complete vehicle separation. When installing the safety cables, use the illustrations below as a guide.

Installation guidelines

1. The cables must be connected to the base plate and the vehicle frame.
2. Two cables must be installed.
3. Each cable must meet or exceed the gross weight of the towed vehicle.
4. Make sure cables do not pinch or interfere with hoses, wiring or other components.



Note: Base plate safety cables are not a replacement for safety chains connecting the tow vehicle to the towed vehicle.

ADDITIONAL INFORMATION

Towing Tips

Check your equipment

Periodically check the condition of all towing equipment. Ensure all fasteners are tight and that all structural components are sound. Do not tow with worn or damaged parts.

Towing vehicle and trailer manufacturer's recommendations

Review the owner's manual for your towing vehicle and trailer for specific recommendations, capacities and requirements.