

INSTALLATION MANUAL

70143

Level of Difficulty

Moderate

Installation difficulty levels are based on time and effort involved and may vary depending on the installer level of expertise, condition of the vehicle and proper tools and equipment.

Installed Attachment Tabs

Height	28"
Width	31"

Parts List

Item	Qty	Description
1	2	Tow bar base plate
2	2	Tow bar mounting tab
3	2	Safety cable, 7,500 lbs.
4	2	Carriage bolt, 1/2"-13, 3-3/4", grade 8
5	2	Serrated flange nut, 1/2"-13, grade 8
6	2	Conical-toothed washer, 7/16"
7	2	Quick link, 1/2"
8	2	Caplugs # dop-1375

Tools Required

Socket, 8mm	Ratchet
Socket, 13mm	Torque wrench
Socket, 15mm	Drill
Socket, 7/16"	Drill bit, 1/4"
Socket, 3/4"	Drill bit, 17/32"
Wrench, 7/16"	--

⚠ WARNING

Never exceed the vehicle manufacturer's recommended towing capacity.

Product Photo



⚠ CAUTION

Take care when cutting any plastic or metal as injury may occur if done improperly.

NOTICE

Visit www.curtmfg.com for a full-color copy of this instruction manual, as well as helpful videos, guides and much more!

Before you begin installation, read all instructions thoroughly.

Proper tools will improve the quality of installation and reduce the time required.

This installation requires:

- Hole enlargement
- Remove recovery loops / D-rings (permanent)
- Remove bumper (temporarily)
- Remove skid shield (temporarily)
- Trimming
- No fishwiring required

Periodic inspection of your product should be performed to ensure all hardware and / or components remain secure.

To help prevent damage to the product or vehicle, refer to the specified torque specifications when securing hardware during the installation process.

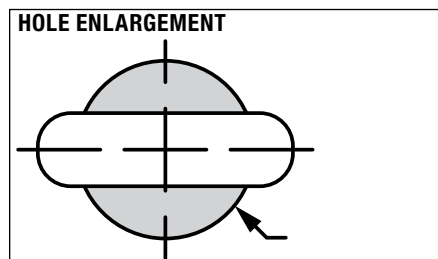
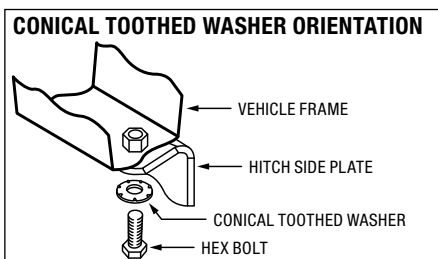
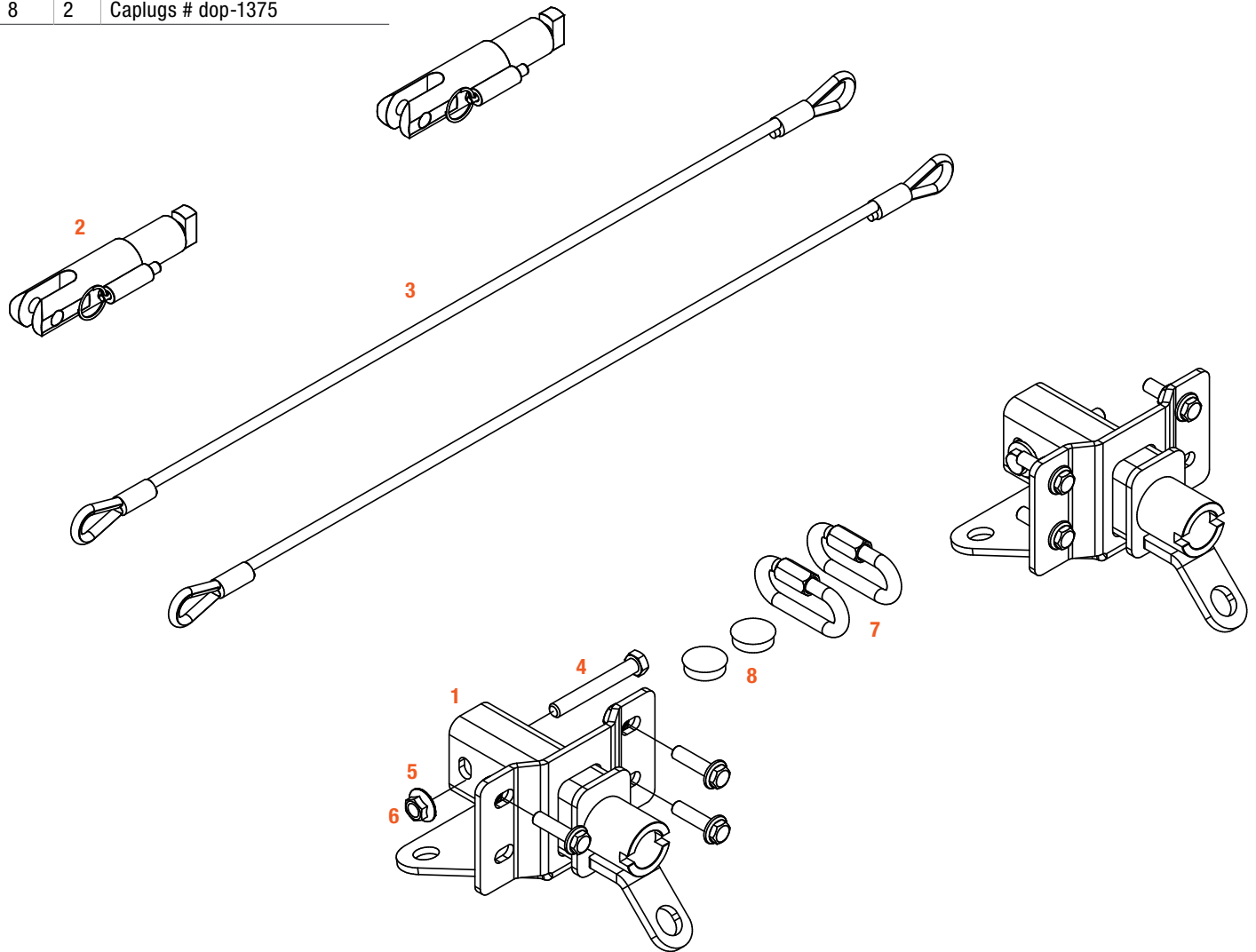
Product Registration and Warranty

CURT stands behind our products with industry-leading warranties. To get copies of the product warranties, register your purchase or provide feedback, visit: warranty.curtgroup.com/surveys

ASSEMBLY

Parts List

Item	Qty	Description
1	2	Tow bar base plate
2	2	Tow bar mounting tab
3	2	Safety cable, 7,500 lbs.
4	2	Carriage bolt, 1/2"-13, 3-3/4", grade 8
5	2	Serrated flange nut, 1/2"-13, grade 8
6	2	Conical-toothed washer, 7/16"
7	2	Quick link, 1/2"
8	2	Caplugs # dop-1375



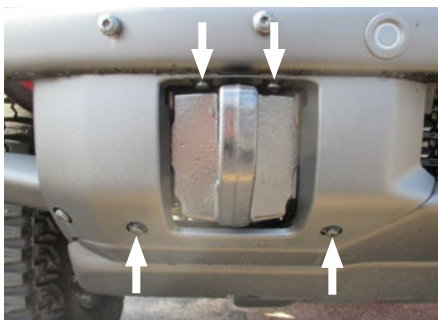
MODULAR BUMPER FASCIA DISASSEMBLY

Step 1

Remove the four push pins from recovery loop cover (two in upper side of loop opening and two on either side by opening).

Carefully unsnap and remove the cover, setting it aside for re-installation later.

Repeat on other side of the vehicle.



Step 2

While supporting the bumper, use a 15mm socket to remove the three bolts from each recovery loop. Remove both recovery loops and the bumper and set aside.



Step 3

Use a 10mm socket to remove the center bolt in the recovery loop brackets. Return the recovery loops to the vehicle owner. Remove the eight flange bolts securing the recovery loop brackets to the bumper with a 13mm socket and set aside for later.



STANDARD BUMPER WITH OR WITHOUT D-RINGS DISASSEMBLY

Step 1

Gently unclip the inner / center bumper covers and unplug the sensors if present.



Step 2

Remove the three flange bolts securing the bumper and D-rings if equipped (or bumper) with a 15mm socket.

Disconnect the wire plug on the driver side of the vehicle and set aside for later.



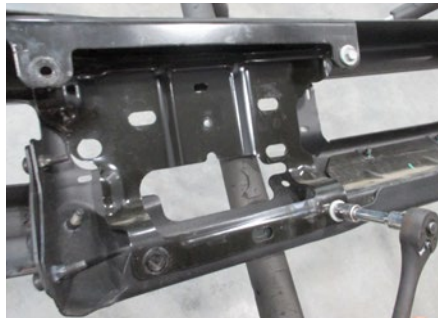
Step 3

If D-ring equipped, remove the one bolt from the back side of the bumper securing each of the D-rings. Return the bolts and D-rings to the vehicle owner.



Step 4

Remove the four flange bolts securing each side of the bumper mounting plate(s) onto the bumper.



MODULAR BUMPER FASCIA DISASSEMBLY

Step 1

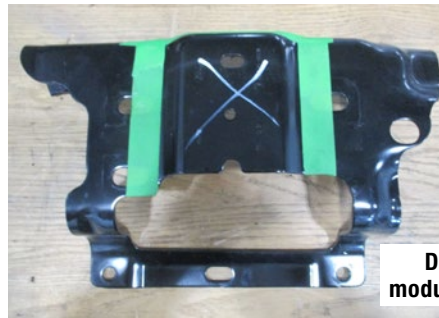
Use a 17/32" drill bit to enlarge the existing holes in the side of the frame rails.



Step 2

On bumper-mounted recovery loop / D-ring equipped vehicles, use a reciprocating saw to cut and remove the section of the bumper mounting bracket covering the opening at the end of the frame rail.

Reinstall the bumper mounting bracket(s) onto the bumper with the fasteners removed in disassembly steps 3 or 4.



Step 3

Insert the baseplate weldments into the ends of the frame rails.



Step 4

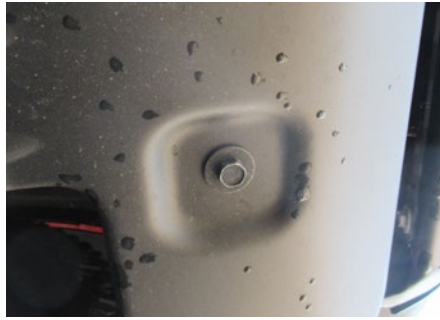
Insert the two 1/2" hex bolts with conical-toothed washers into each of the enlarged holes and install the 1/2" hex flange nuts.

Torque all 1/2" fasteners to 110 ft-lbs.



Step 5

Use a 15mm socket to remove four bolts securing the skid shield



Step 6

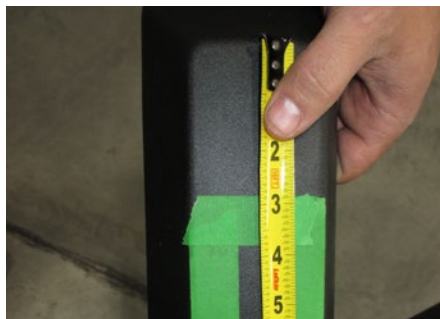
Install the permanent safety cables (#4) and quick links (#10), looping them around the vehicle frame and linking them to the tow bar base plate (#1, #2). There must be one cable on each side of the vehicle. Make sure the cables do not pinch or interfere with any hoses, wiring or other components (see Installing the Permanent Base Plate Safety Cables for additional information).

Step 7

Reinstall the bumper with the six bolts removed in step 2 of disassembly and reconnect the wiring harness.

Step 8

Reinstall the skid shield. Trim the inner bumper covers as needed and reinstall along with reconnecting any sensors.



Final Installed Image



TOWING BASICS & SAFETY INFORMATION

For information on safely towing your trailer, visit curtmfg.com/understanding-towing.

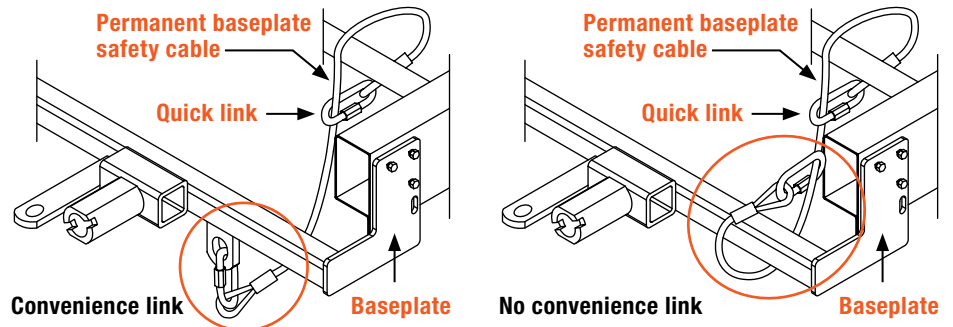
SAFETY CABLE INSTALLATION

Installing the Permanent Base Plate Safety Cables

When dinghy towing a vehicle with a tow bar, base plate safety cables should be used at all times. In the event of a disconnect, the safety cables are designed to help prevent complete vehicle separation. When installing the safety cables, use the illustrations below as a guide.

Installation guidelines

1. The cables must be connected to the base plate and the vehicle frame.
2. Two cables must be installed.
3. Each cable must meet or exceed the gross weight of the towed vehicle.
4. Make sure cables do not pinch or interfere with hoses, wiring or other components.



Note: Base plate safety cables are not a replacement for safety chains connecting the tow vehicle to the towed vehicle.

ADDITIONAL INFORMATION

Towing Tips

Check your equipment

Periodically check the condition of all towing equipment. Ensure all fasteners are tight and that all structural components are sound. Do not tow with worn or damaged parts.

Towing vehicle and trailer manufacturer's recommendations

Review the owner's manual for your towing vehicle and trailer for specific recommendations, capacities and requirements.